

# Daily Derivatives & Market Report

$dy/dx$

## CONTENTS

Pg No.	Particulars
3	Market Summary
4	Nifty Futures – Derivatives Snap
5	Activity in Nifty Options
6	What do Nifty Technicals suggest
	Disclaimer

## Market Summary

Domestic Indices	Close	Points	% Chg
SENSEX	29485.5	-33.29	-0.11
NIFTY	9121.5	-5.35	-0.06
MIDCAP	13853.5	-63.27	-0.45
SMLCAP	14027.9	-27.06	-0.19
BSEFMC	9319.3	93.43	1.01
AUTO	22180.8	-95.19	-0.43
POWER	2230.3	-2.91	-0.13
REALTY	1578.1	21.06	1.35
BSE IT	10475.4	34.17	0.33
BANSEX	23907.7	-142.5	-0.59
OILGAS	13312.2	-39.71	-0.30
METAL	11855.7	-14.02	-0.12

Currency Futures	Close	Pre. Pts	% Chg
29-Mar-16 EUR-INR	70.58	70.42	0.24
29-Mar-16 USD-INR	65.31	65.44	-0.19
29-Mar-16 GBP-INR	81.44	81.29	0.23
29-Mar-16 JPY-INR	58.14	58.01	0.20

Advance/ Decline	Adv	Dec	Un Ch.
NSE	583	1067	80
BSE	1058	1739	177

FII/DII Capital Mkt*	Buy	Sell	Net
FII	8539	6876	1663
DII	2426	3225	(799)

\*NOTE: - FII AND DII data figure is provisional

## Market Commentary

Extending previous session's southward journey, Indian equity benchmarks ended the session slightly in red on Tuesday. Soon after a positive start, markets entered into red terrain, as traders reacted negatively to SBI Research report which highlighted that if the UP government fulfils its farmer loan waiver promise, banks are likely to take a hit of Rs 27,420 crore and the scheme will lead to some stress on the state's fiscal arithmetic. The BJP had in its UP election manifesto promised to waive farmers' loans if elected to power. The report said that schedule commercial banks together had an outstanding farm credit of Rs 86,241.20 crore in UP with the average ticket size of Rs 1.34 lakh, as of 2016, most of which is to small and marginal farmers.

However, some recovery took place in last leg of trade and pared most of their initial losses, as investors opted to buy beaten-down but fundamentally strong stocks. Traders took some support with report that Cabinet cleared four supporting GST legislations, paving the way for their introduction in Parliament. Once approved by Parliament, the states would start taking their SGST bill for discussion and passage in the respective state assemblies.

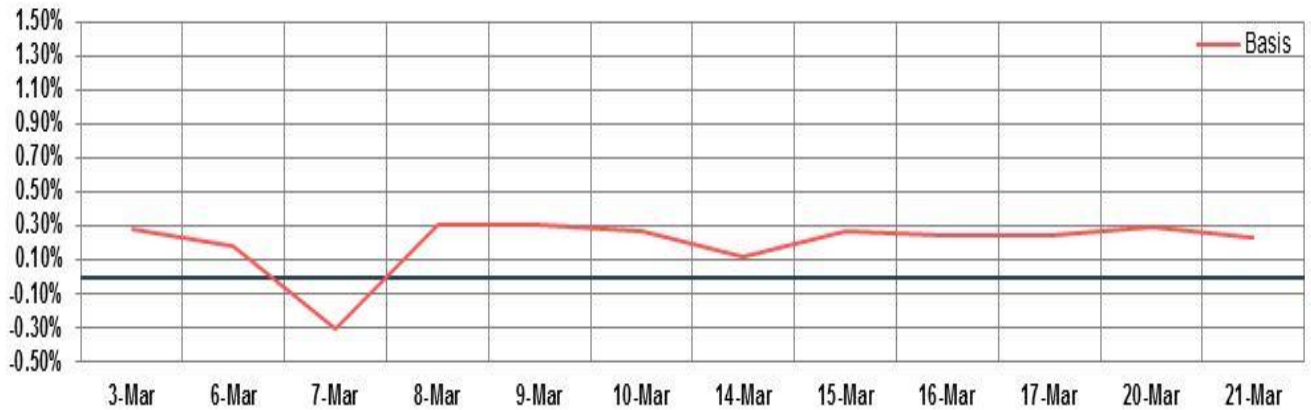
Positive opening in European markets too provided some support, as investors eyed rising oil prices and intensifying talks between Greece and its euro zone creditors. Asian shares hit 15-month highs on Tuesday, while the dollar and US bond yields were on the back foot on the prospect of a less-hawkish Federal Reserve policy trajectory.

## Market Turnover & FII Derivative Data

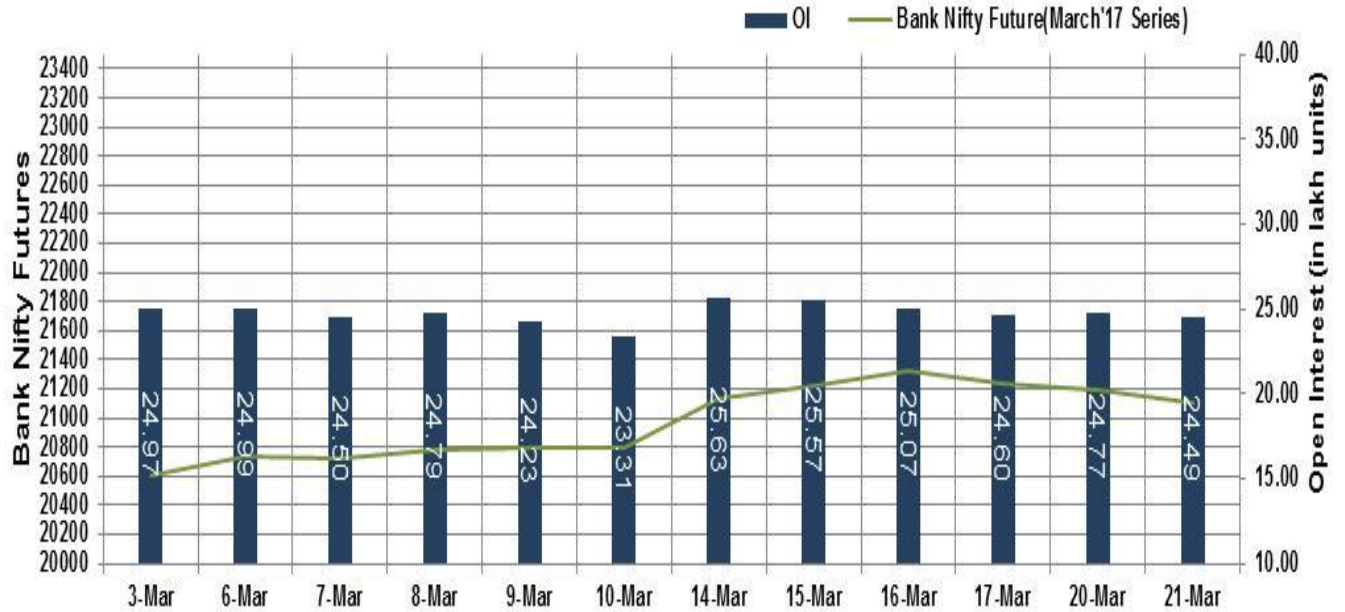
Market TO	Current	Previous	Net%
BSE CASH	5206	56821	(91)
NSE CASH	29315	22650	29
NSE FO	390221	260098	50

FII Derivatives	Buy	Sell	Net
Ind. Futures	1160	1186	(26)
Ind. Options	32571	33147	(576)
Stk. Futures	6535	8926	(2391)
Stk. Options	4973	4946	27

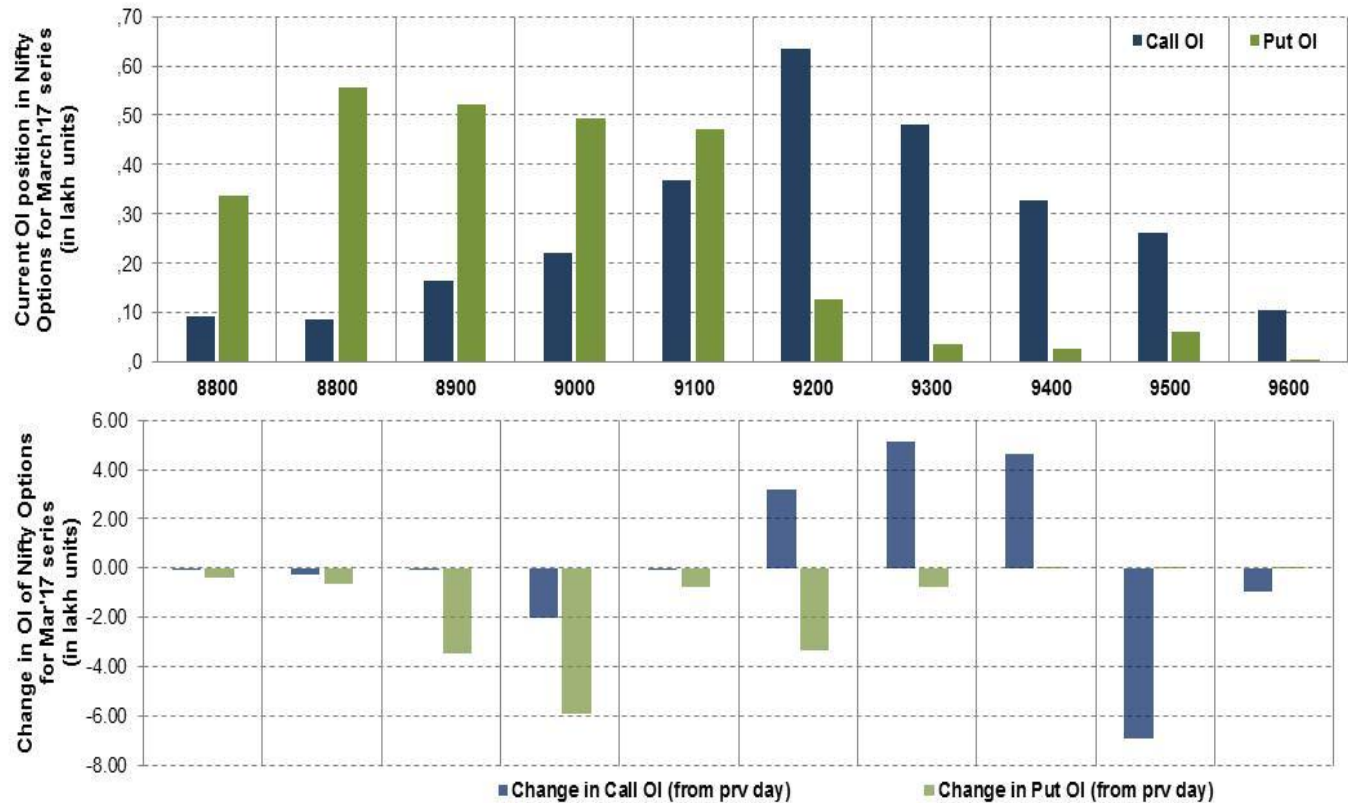
# Nifty Futures



# Bank Nifty Futures



## Nifty Options

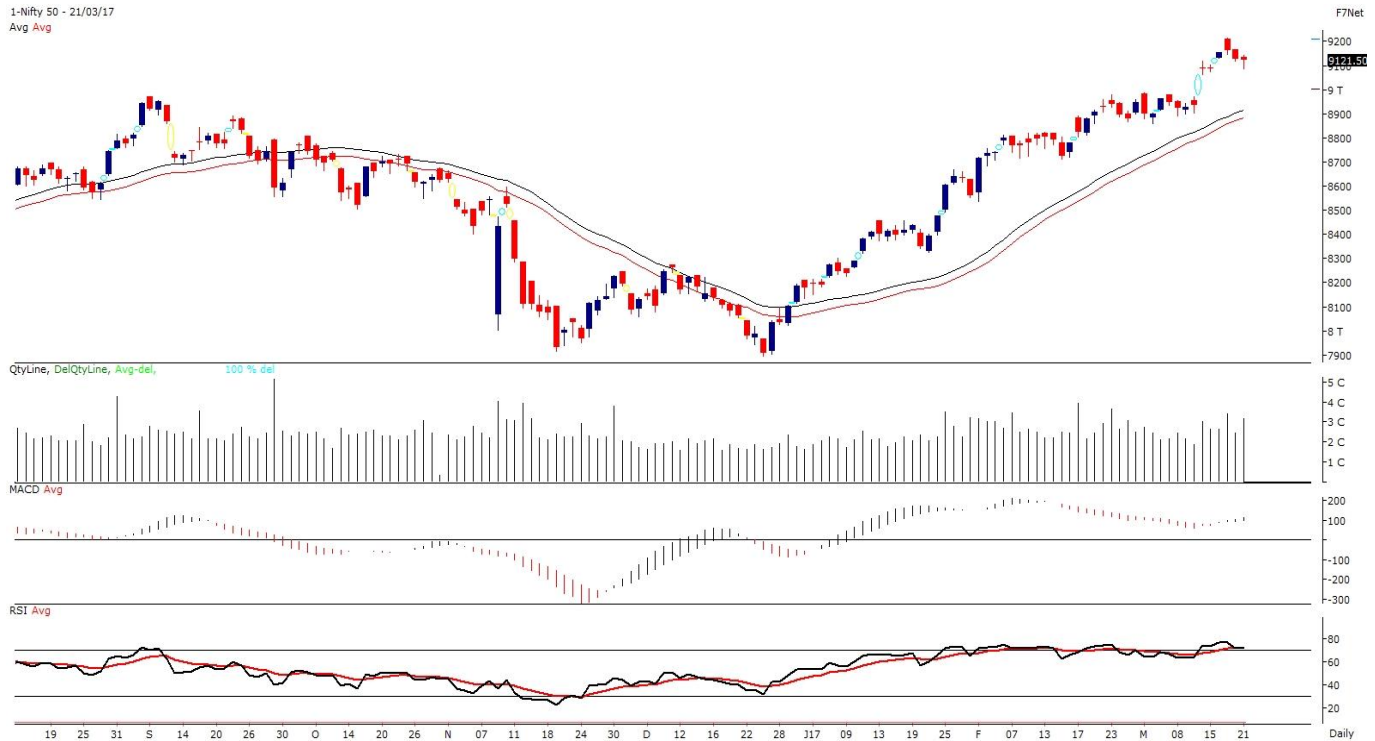


Note – Change in OI of Nifty Options refers to change from previous trading day  
 Source-NSE, SIHL Derivatives Research (Institutional Equities)

- Among Nifty calls 9,200 SP from the March month expiry was the most active call with an addition of 0.32 million in open interest.
- Among Nifty puts, 8,800 SP from the March month expiry was the most active put with a reduction of 0.06 million open interests.
- The maximum OI outstanding for Calls was at 9,200 SP (6.35mn) and that for Puts was at 8,800 SP (5.56mn).

## Nifty Technicals & Indices Levels

1-Nifty 50 - 21/03/17  
 Avg Avg



Nifty Cash prices have settled at 9121.5 down by 0.06% from its previous close. On the upper side prices are likely to trade higher till 9250 and 9300 levels, while lower side it has support of 9050 and 9000 levels. Intraday traders should be cautious and take position accordingly.

Source-Spider, SIHL Research (Institutional Equities)

Pivot	CMP	R2	R1	Pivot	S1	S2
Nifty	<b>9122</b>	9179.4	9150.4	<b>9119</b>	9089.9	9058.3
Sensex	<b>29485</b>	29688.5	29587.0	<b>29484</b>	29382.0	29278.6
Nifty Futures	<b>9143</b>	9201.0	9172.0	<b>9143</b>	9113.8	9084.6
Bank Nifty	<b>21019</b>	21223.7	21121.3	<b>21044</b>	20941.8	20864.7
CNX IT	<b>10787</b>	10859.8	10823.5	<b>10787</b>	10751.1	10715.0

Fresh Longs ↑ Open Interest ↑ Price					
Script	Prev. OI	Cur. OI	% Chg. OI	LTP	Price % Chg
ICIL	4,445,000	4,994,500	12.36	189.75	0.13
ABIRLANUVO	2,752,000	3,037,600	10.38	1580.45	2.23
BOSCHLTD	89,650	94,500	5.41	22963.15	0.87
GRASIM	6,562,500	6,865,500	4.62	1093.30	2.51
Short-Covering ↓ Open Interest ↑ Price					
Script	Prev. OI	Cur. OI	% Chg. OI	LTP	Price % Chg
TV18BRDCST	86,853,000	82,671,000	-4.82	44.00	1.38
CESC	4,048,000	3,830,200	-5.38	840.55	0.66
AJANTPHARM	607,200	568,800	-6.32	1838.00	0.87
DCBBANK	4,824,000	4,500,000	-6.72	165.35	0.49
Fresh Shorts ↑ Open Interest ↓ Price					
Script	Prev. OI	Cur. OI	% Chg. OI	LTP	Price % Chg
DIVISLAB	5,079,600	7,570,800	49.04	636.85	-19.78
ORIENTBANK	15,516,000	18,888,000	21.73	133.65	-0.15
M&M	3,797,500	4,490,000	18.24	1295.10	-0.80
ARVIND	5,804,000	6,548,000	12.82	401.95	-1.46
Long Unwinding ↓ Open Interest ↓ Price					
Script	Prev. OI	Cur. OI	% Chg. OI	LTP	Price % Chg
RELCAPITAL	10,837,500	10,165,500	-6.20	601.30	-1.09
RPOWER	55,860,000	52,392,000	-6.21	48.10	-0.31
TORNTPHARM	219,600	204,400	-6.92	1439.45	-0.26
PCJEWELLER	1,105,500	946,500	-14.38	431.75	-2.03



## Disclaimer:

The Information provided by SMS or in newsletter or in any document has been prepared by Shah Investor's Home Ltd (SIHL). The Information provided by SMS or in newsletter does not constitute an offer or solicitation for the purchase or sale of any financial instrument or as an official confirmation of any transaction. The information contained herein is from publicly available data or other sources believed to be reliable, but we do not represent that it is accurate or complete and it should not be relied on as such. SIHL or any of its affiliates/ group companies shall not be in any way responsible for any loss or damage that may arise to any person from any inadvertent error in the information contained in this report or SMS. This Information provided by SMS, reports or in newsletter is provided for assistance only and is not intended to be and must not alone be taken as the basis for an investment decision. The user assumes the entire risk of any use made of this information. Each recipient of this Information provided by SMS, report or in newsletter should make such investigation as it deems necessary to arrive at an independent evaluation of an investment in the securities of companies referred to in this information provided by SMS, report or in newsletter (including the merits and risks involved), and should consult his own advisors to determine the merits and risks of such investment. The investment discussed or views expressed may not be suitable for all investors. This information is strictly confidential and is being furnished to you solely for your information.

The information should not be reproduced or redistributed or passed on directly or indirectly in any form to any other person or published, copied, in whole or in part, for any purpose. The information provided by report or SMS is not directed or intended for distribution to, or use by, any person or entity who is a citizen or resident of or located in any locality, state, country or other jurisdiction, where such distribution, publication, availability or use would be contrary to law, regulation or which would subject SIHL and affiliates/ group companies to any registration or licensing requirements within such jurisdiction. The distribution of this Information provided by SMS or in newsletter in certain jurisdictions may be restricted by law, and persons in whose possession this Information provided by SMS or in newsletter comes, should inform themselves about and observe, any such restrictions. The information given or Information provided by SMS, report or in newsletter is as of the date of the issue date of report or the date on which SMS provided and there can be no assurance that future results or events will be consistent with this information. This information is subject to change without any prior notice. SIHL reserves the right to make modifications and alterations to this statement as may be required from time to time. However, SIHL is under no obligation to update or keep the information current.

Nevertheless, SIHL is committed to providing independent and transparent recommendation to its client and would be happy to provide any information in response to specific client queries. Neither SIHL nor any of its affiliates, group companies, directors, employees, agents or representatives shall be liable for any damages whether direct, indirect, special or consequential including lost revenue or lost profits that may arise from or in connection with the use of the information. Past performance is not necessarily a guide to future performance. The disclosures of interest statements incorporated in the Information provided by SMS, report or in newsletter are provided solely to enhance the transparency and should not be treated as endorsement of the views expressed in the report. The analyst for this report certifies that all of the views expressed in this report accurately reflect his or her personal views about the subject company or companies and its or their securities, and no part of his or her compensation was, is or will be, directly or indirectly related to specific recommendations or views expressed in this report.

## About Us:

Shah Investor's Home Ltd (SIHL) is an ISO 9001:2008 Certified financial Services Company established in 1994 at Ahmadabad, Gujarat. Customer satisfaction is guaranteed through our diversified product portfolio, professional management and customer first attitude. SIHL was the first broking house in Gujarat with membership in National Securities Depository Ltd (NSDL) and was the first broking name providing services in NSE F&O in Ahmedabad. Today, SIHL ranks among the top most players in Gujarat in retail stock broking area with 45 branches, 350 franchisee across India and providing service to more than 1,25,000 clients.