

# Daily Derivatives & Market Report

## CONTENTS

Page No.	Particulars
2	Market Summary
3	Nifty Futures – Derivatives Snap
4	Bank Nifty Futures – Derivatives Snap
5	Activity in Nifty Options
6	What do Nifty Technical suggest
7	Derivative Analysis
8	Disclaimer

## Index Trend Analysis

Pivot(Daily)	Close	R2	R1	Pivot	S1	S2	Daily	Weekly	Monthly
Nifty	9360	9392	9376	9350	9334	9307	Buy	Buy	Buy
Sensex	30126	30264	30195	30101	30032	29939	Buy	Buy	Buy
Nifty Futures	9377	9416	9396	9365	9345	9313	Buy	Buy	Buy
Bank Nifty	22720	22932	22826	22638	22532	22344	Buy	Buy	Buy
CNX IT	10107	10226	10166	10111	10051	9996	Buy	Buy	Sell

## Market Summary

Domestic Indices	Close	Points	% Chg
SENSEX	30126.2	231.4	0.77
NIFTY	9359.9	47.95	0.51
MIDCAP	14880.8	70.65	0.48
SMLCAP	15485.7	54.79	0.36
BSEFMC	9486.2	101.5	1.08
AUTO	22769.5	-126.8	-0.55
POWER	2328.9	4.21	0.18
REALTY	1976.5	-15.95	-0.80
BSE IT	9785.7	-20.07	-0.20
BANKEX	25831.2	584.9	2.32
OILGAS	14431.4	-77.02	-0.53
METAL	11117.2	-86.27	-0.77

Currency Futures	Close	Pre. Pts	% Chg
29-May-16 EUR-INR	70.44	70.34	0.18
29-May-16 USD-INR	64.37	64.36	0.01
29-May-16 GBP-INR	83.02	83.25	-0.28
29-May-16 JPY-INR	57.09	57.41	-0.58

Advance/ Decline	Adv	Dec	Un Ch.
NSE	858	816	99
BSE	1430	1428	147

FII/DII Capital Mkt*	Buy	Sell	Net
FII	5619	6220	(601)
DII	3929	3003	926

\*NOTE: - FII AND DII data figure is provisional

## Market Commentary

A session after displaying a distressing performance, Indian equity indices have managed to pull through a dazzling performance by gaining over half a percent on Thursday, thanks to encouraging corporate earnings and a string of government reforms, including NPA package for banks and national steel policy. The government has approved a new policy that envisages Rs 10 lakh crore investment to create more capacity in the steel sector. The policy aims at increasing supply of domestic coking coal to cut dependence on imports by half and production of 300 million tonnes of the alloy by 2030-31. Investors' sentiments also got boost after the US Federal Reserve kept its policy rate unchanged in its two-day policy review. Some support also came with the report that services sector grew for the third straight month in April 2017, though the pace of growth moderated amid slower rise in new business and employment. The Nikkei India Services Purchasing Managers' Index (PMI), which tracks services sector output on a monthly basis, was down from 51.5 in March to 50.2 in April, indicating challenging market conditions that hampered growth. A reading above 50 on the index denotes expansion, while one below the benchmark indicates contraction.

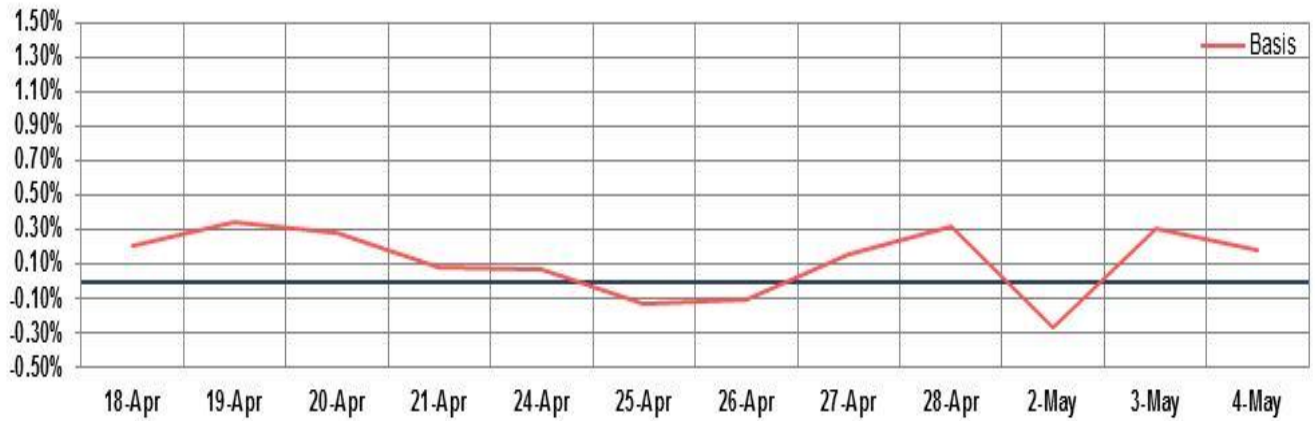
On the global front, Asian equity markets ended mixed on Thursday, as investors turned cautious after the US Federal Reserve left interest rates unchanged overnight as expected, but signaled another rate hike is imminent despite recent economic weakness.

## Market Turnover & FII Derivative Data

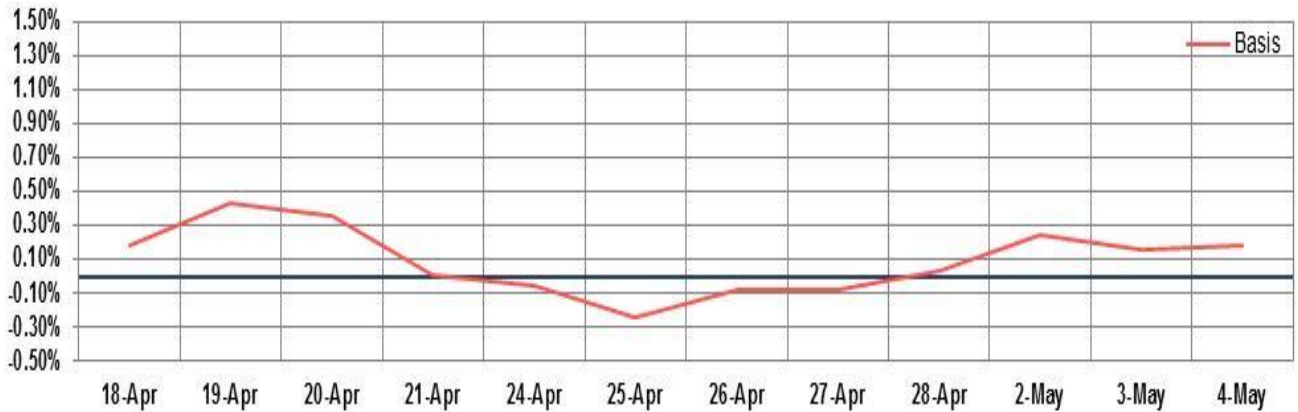
Market TO	Current	Previous	Net%
BSE CASH	4462	4236	5
NSE CASH	27632	25273	9
NSE FO	755654	367133	106

FII Derivatives	Buy	Sell	Net
Ind. Futures	1573	2012	(439)
Ind. Options	36667	35339	1328
Stk. Futures	7799	7322	477
Stk. Options	5713	5674	40

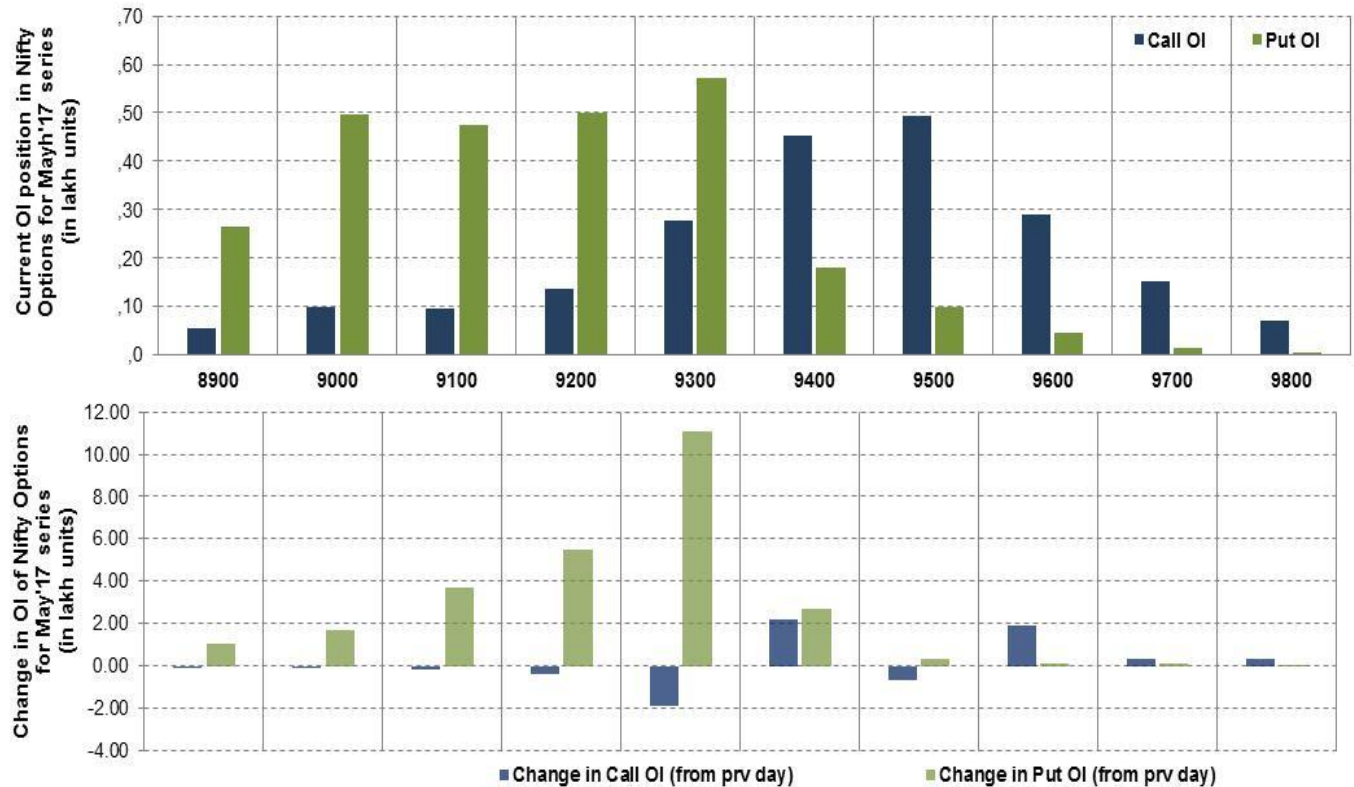
# Nifty Futures



## Bank Nifty Futures



## Nifty Options

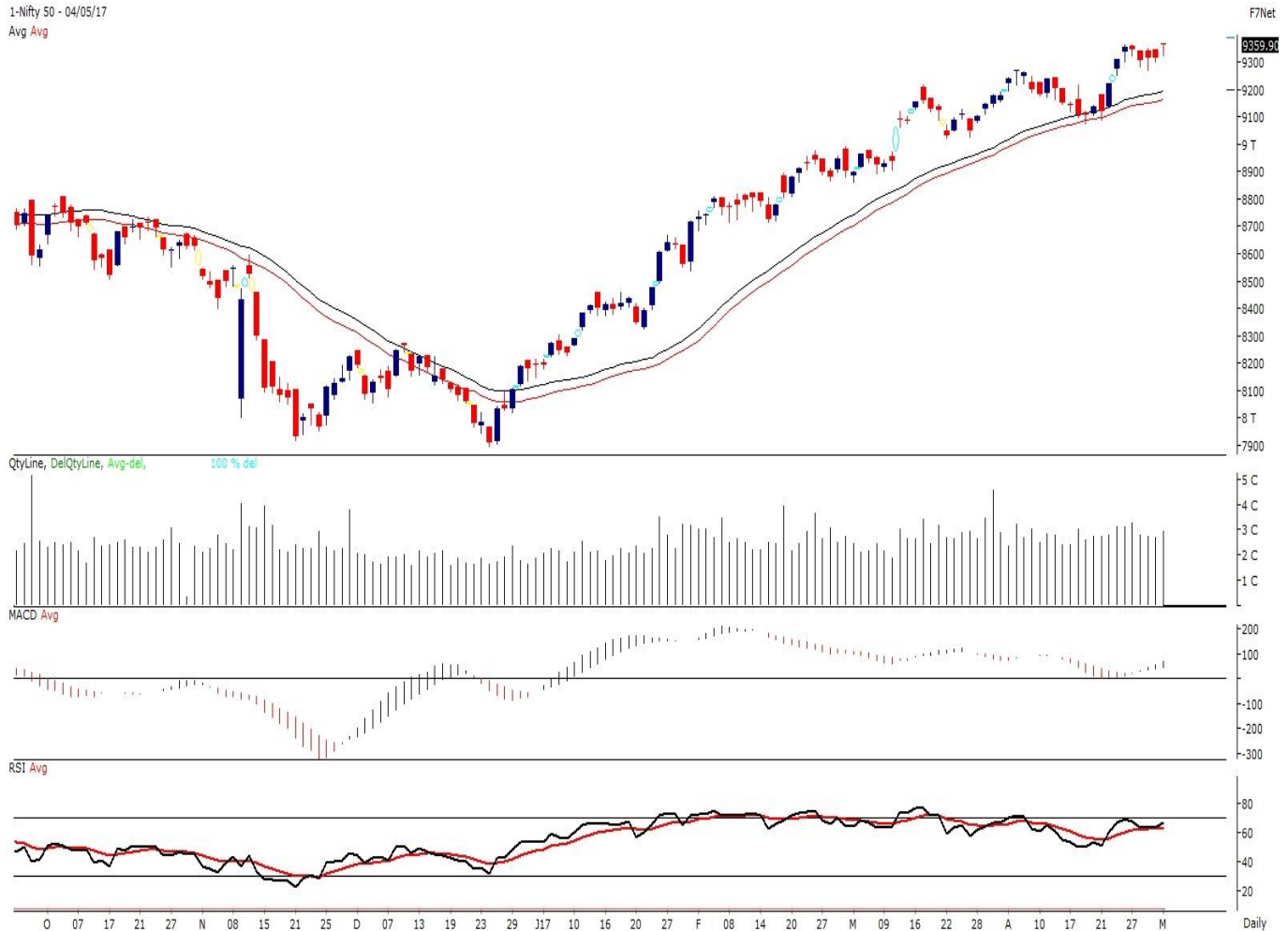


Note – Change in OI of Nifty Options refers to change from previous trading day  
 Source-NSE, SIHL Derivatives Research (Institutional Equities)

- Among Nifty calls 9,500 SP from the May month expiry was the most active call with a reduction of 0.07 million in open interest.
- Among Nifty puts, 9,300 SP from the May month expiry was the most active put with an addition of 1.11 million open interests.
- The maximum OI outstanding for Calls was at 9,500 SP (4.93mn) and that for Puts was at 9,300 SP (5.72mn).

## Nifty Technical & Indices Levels

1-Nifty 50 - 04/05/17  
 Avg Avg



Nifty Cash prices have settled at 9359.9 up by 0.51% from its previous close. On the upper side prices are likely to trade higher till 9400 and 9450 levels, while lower side it has support of 9300 and 9250 levels. Intraday traders should be cautious and take position accordingly.



Fresh Longs ↑ Open Interest ↑ Price					
Script	Prev. OI	Cur. OI	% Chg. OI	LTP	Price % Chg
VGUARD	819,000	1,629,000	98.90	204.35	8.09
BERGEPAINT	437,800	519,200	18.59	255.80	1.11
GSFC	5,049,000	5,985,000	18.54	143.15	6.47
CANFINHOME	247,750	283,500	14.43	2858.85	1.47
Short-Covering ↓ Open Interest ↑ Price					
Script	Prev. OI	Cur. OI	% Chg. OI	LTP	Price % Chg
SBIN	67,434,000	63,984,000	-5.12	300.30	3.46
BAJAJ-AUTO	978,000	926,750	-5.24	2946.00	0.19
CUMMINSIND	678,600	634,800	-6.45	1064.75	0.32
HEXAWARE	3,039,000	2,733,000	-10.07	238.20	1.17
Fresh Shorts ↑ Open Interest ↓ Price					
Script	Prev. OI	Cur. OI	% Chg. OI	LTP	Price % Chg
BHARATFORG	3,331,200	3,882,000	16.53	1123.05	-2.73
MCX	668,500	767,000	14.73	1162.35	-0.03
FORTIS	6,804,000	7,681,500	12.90	218.45	-1.82
RAYMOND	859,200	941,600	9.59	775.15	-1.72
Long Unwinding ↓ Open Interest ↓ Price					
Script	Prev. OI	Cur. OI	% Chg. OI	LTP	Price % Chg
UJJIVAN	7,768,800	7,456,800	-4.02	356.30	-0.67
JETAIRWAYS	5,411,000	5,184,000	-4.20	525.15	-1.20
PAGEIND	24,650	23,550	-4.46	14515.75	-2.03
POWERGRID	29,416,000	28,020,000	-4.75	211.00	-0.28

#### Disclaimer:

The Information provided by SMS or in newsletter or in any document has been prepared by Shah Investor's Home Ltd (SIHL). The Information provided by SMS or in newsletter does not constitute an offer or solicitation for the purchase or sale of any financial instrument or as an official confirmation of any transaction. The information contained herein is from publicly available data or other sources believed to be reliable, but we do not represent that it is accurate or complete and it should not be relied on as such. SIHL or any of its affiliates/ group companies shall not be in any way responsible for any loss or damage that may arise to any person from any inadvertent error in the information contained in this report or SMS. This Information provided by SMS, reports or in newsletter is provided for assistance only and is not intended to be and must not alone be taken as the basis for an investment decision. The user assumes the entire risk of any use made of this information. Each recipient of this Information provided by SMS, report or in newsletter should make such investigation as it deems necessary to arrive at an independent evaluation of an investment in the securities of companies referred to in this information provided by SMS, report or in newsletter (including the merits and risks involved), and should consult his own advisors to determine the merits and risks of such investment. The investment discussed or views expressed may not be suitable for all investors. This information is strictly confidential and is being furnished to you solely for your information.

The information should not be reproduced or redistributed or passed on directly or indirectly in any form to any other person or published, copied, in whole or in part, for any purpose. The information provided by report or SMS is not directed or intended for distribution to, or use by, any person or entity who is a citizen or resident of or located in any locality, state, country or other jurisdiction, where such distribution, publication, availability or use would be contrary to law, regulation or which would subject SIHL and affiliates/ group companies to any registration or licensing requirements within such jurisdiction. The distribution of this Information provided by SMS or in newsletter in certain jurisdictions may be restricted by law, and persons in whose possession this Information provided by SMS or in newsletter comes, should inform themselves about and observe, any such restrictions. The information given or Information provided by SMS, report or in newsletter is as of the date of the issue date of report or the date on which SMS provided and there can be no assurance that future results or events will be consistent with this information. This information is subject to change without any prior notice. SIHL reserves the right to make modifications and alterations to this statement as may be required from time to time. However, SIHL is under no obligation to update or keep the information current.

Nevertheless, SIHL is committed to providing independent and transparent recommendation to its client and would be happy to provide any information in response to specific client queries. Neither SIHL nor any of its affiliates, group companies, directors, employees, agents or representatives shall be liable for any damages whether direct, indirect, special or consequential including lost revenue or lost profits that may arise from or in connection with the use of the information. Past performance is not necessarily a guide to future performance. The disclosures of interest statements incorporated in the Information provided by SMS, report or in newsletter are provided solely to enhance the transparency and should not be treated as endorsement of the views expressed in the report. The analyst for this report certifies that all of the views expressed in this report accurately reflect his or her personal views about the subject company or companies and its or their securities, and no part of his or her compensation was, is or will be, directly or indirectly related to specific recommendations or views expressed in this report.

#### About Us:

Shah Investor's Home Ltd (SIHL) is an ISO 9001:2008 Certified financial Services Company established in 1994 at Ahmadabad, Gujarat. Customer satisfaction is guaranteed through our diversified product portfolio, professional management and customer first attitude. SIHL was the first broking house in Gujarat with membership in National Securities Depository Ltd (NSDL) and was the first broking name providing services in NSE F&O in Ahmedabad. Today, SIHL ranks among the top most players in Gujarat in retail stock broking area with 45 branches, 350 franchisee across India and providing service to more than 1,25,000 clients.