

Daily Derivatives & Market Report

CONTENTS

Page No.	Particulars
2	Market Summary
3	Nifty Futures – Derivatives Snap
4	Bank Nifty Futures – Derivatives Snap
5	Activity in Nifty Options
6	What do Nifty Technical suggest
7	Derivative Analysis
8	Disclaimer

Index Trend Analysis

Pivot(Daily)	Close	S2	S1	Pivot	R1	R2	Daily	Weekly	Monthly
Nifty	10632	10564	10598	10627	10661	10690	Buy	Buy	Buy
Sensex	34433	34183	34308	34437	34562	34691	Buy	Buy	Buy
Nifty Futures	10637	10576	10606	10627	10658	10679	Buy	Buy	Buy
Bank Nifty	25617	25431	25524	25621	25714	25811	Buy	Buy	Buy
CNX IT	12055	11651	11853	11964	12166	12278	Buy	Buy	Buy

Market Summary

Domestic Indices	Close	Points	% Chg
SENSEX	34433.0	-10.1	-0.03
NIFTY	10632.2	-4.8	-0.05
MIDCAP	18118.2	-55.6	-0.31
SMLCAP	19903.3	-7.8	-0.04
BSEFMC	10830.1	-15.4	-0.14
AUTO	26372.7	-180.3	-0.68
POWER	2421.4	-4.7	-0.2
REALTY	2749.6	31.5	1.16
BSE IT	11599.1	209.7	1.8
BANDEX	28958.6	-90.6	-0.31
OILGAS	16298.0	-2.7	-0.02
METAL	15788.3	15.9	0.10

Currency Futures	Close	Pre. Pts	% Chg
29-Jan-18 EUR-INR	76.54	76.21	0.40
29-Jan-18 USD-INR	63.73	63.85	-0.17
29-Jan-18 GBP-INR	86.38	86.46	-0.05
29-Jan-18 JPY-INR	57.22	56.67	1.00

Advance/ Decline	Adv	Dec	Un Ch.
NSE	720	1068	64
BSE	1299	1629	126

FII/DII Capital Mkt*	Buy	Sell	Net
FII	3797	4369	(572)
DII	3943	3343	600

*NOTE: - FII AND DII data figure is provisional

Market Commentary

Indian equity benchmarks ended the choppy day of trade with minimal losses, as traders remained on sidelines ahead of key corporate earnings later this week and the federal budget next month. Market participants also opted to stay away from buying risky assets ahead of the outcome of meeting organised by government think tank NITI Aayog, and attended by a host of ministers including Finance Minister Arun Jaitley, NITI Aayog functionaries and leading economists. Some concerns also came with rating agency ICRA's latest report stating that credit growth of Infrastructure finance firms will remain subdued over the short term. However, losses remained capped with the World Bank projecting India's growth rate to 7.3 per cent in 2018 and 7.5 for the next two years. It said that with an "ambitious government undertaking comprehensive reforms", India has "enormous growth potential" compared to other emerging economies. The 2018 Global Economics Prospect released by the World Bank also said that India, despite initial setbacks from demonetisation and Goods and Services Tax (GST), is estimated to have grown at 6.7 per cent in 2017.

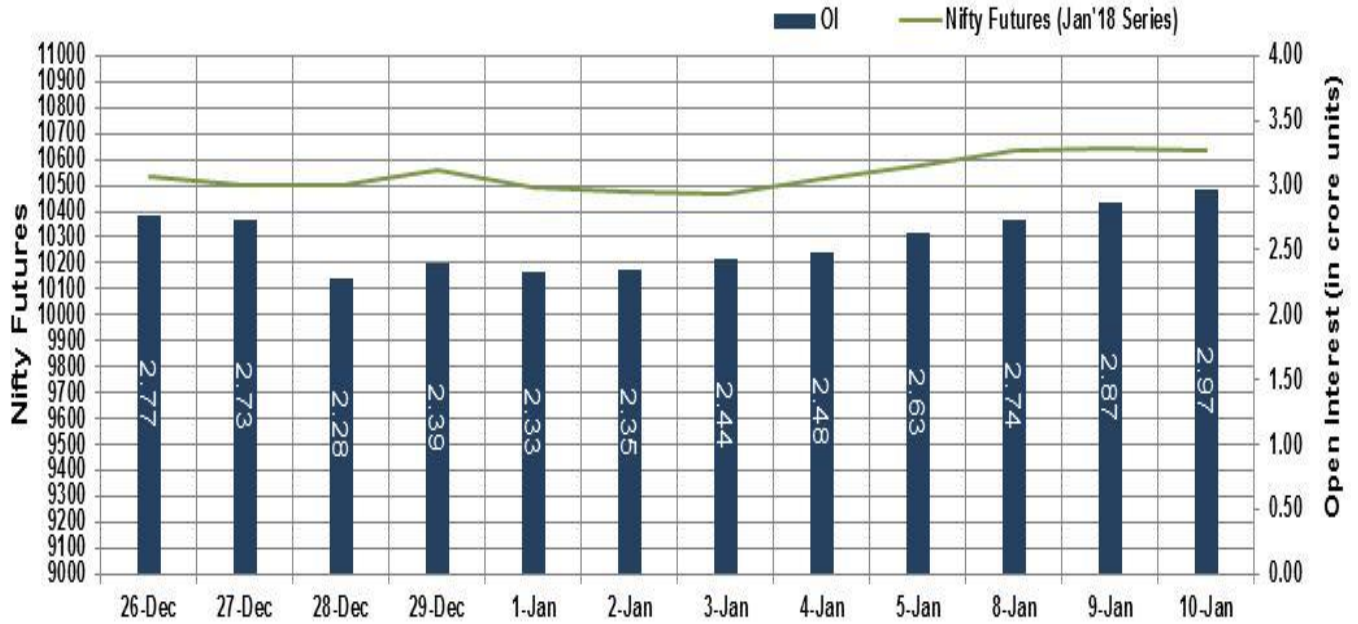
Traders also got some solace with domestic rating agency CRISIL expecting India Inc's revenue growth to hit a five-year high of 9 per cent for the October-December 2017 period, on higher realizations in steel, aluminium, cement and crude oil-linked sectors, and a pick-up in consumption-driven sectors such as auto and aviation. However, profits will continue to contract, primarily due to the rising commodity prices. Traders also took some comfort with the Cabinet approving key changes in India's Foreign Direct Investment (FDI) policy by easing investment norms across sectors including aviation, construction and single brand retail among others

Market Turnover & FII Derivative Data

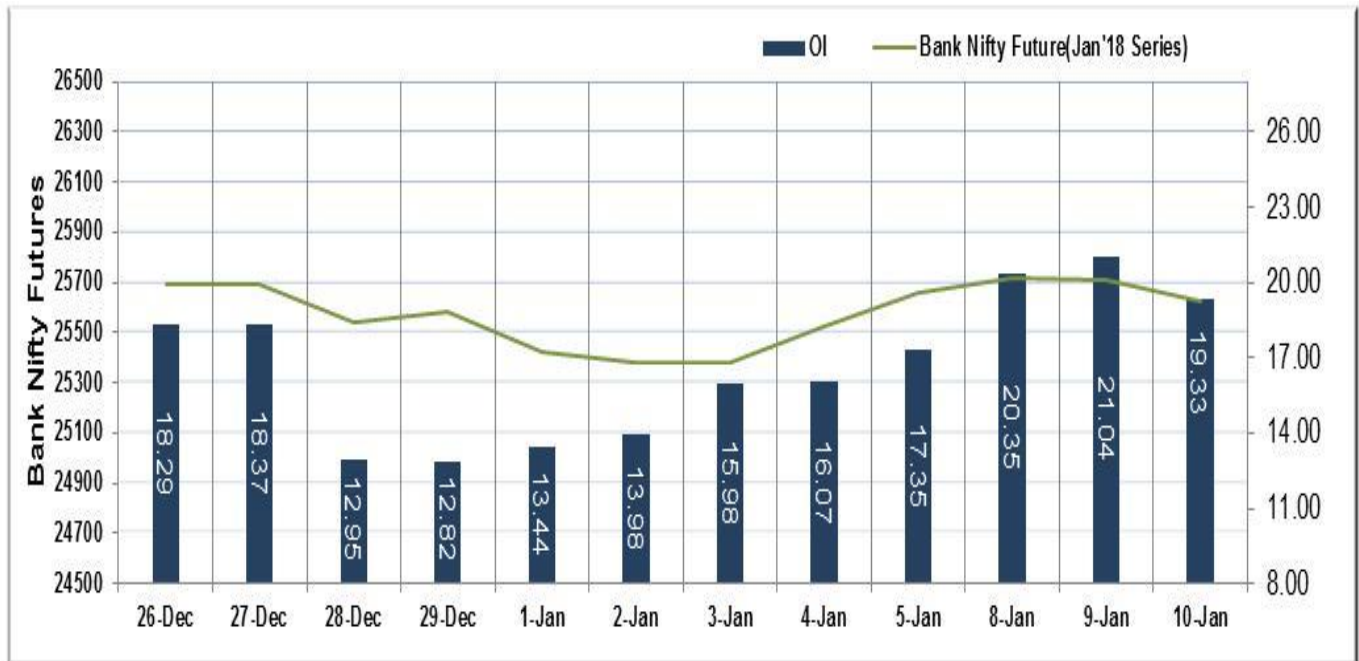
Market TO	Current	Previous	Net%
BSE CASH	5026	5458	(8)
NSE CASH	36413	37081	(2)
NSE FO	596072	467899	27

FII Derivatives	Buy	Sell	Net
Ind. Futures	1184	1425	(242)
Ind. Options	49199	49109	90
Stk. Futures	9234	8916	318
Stk. Options	6933	6931	2

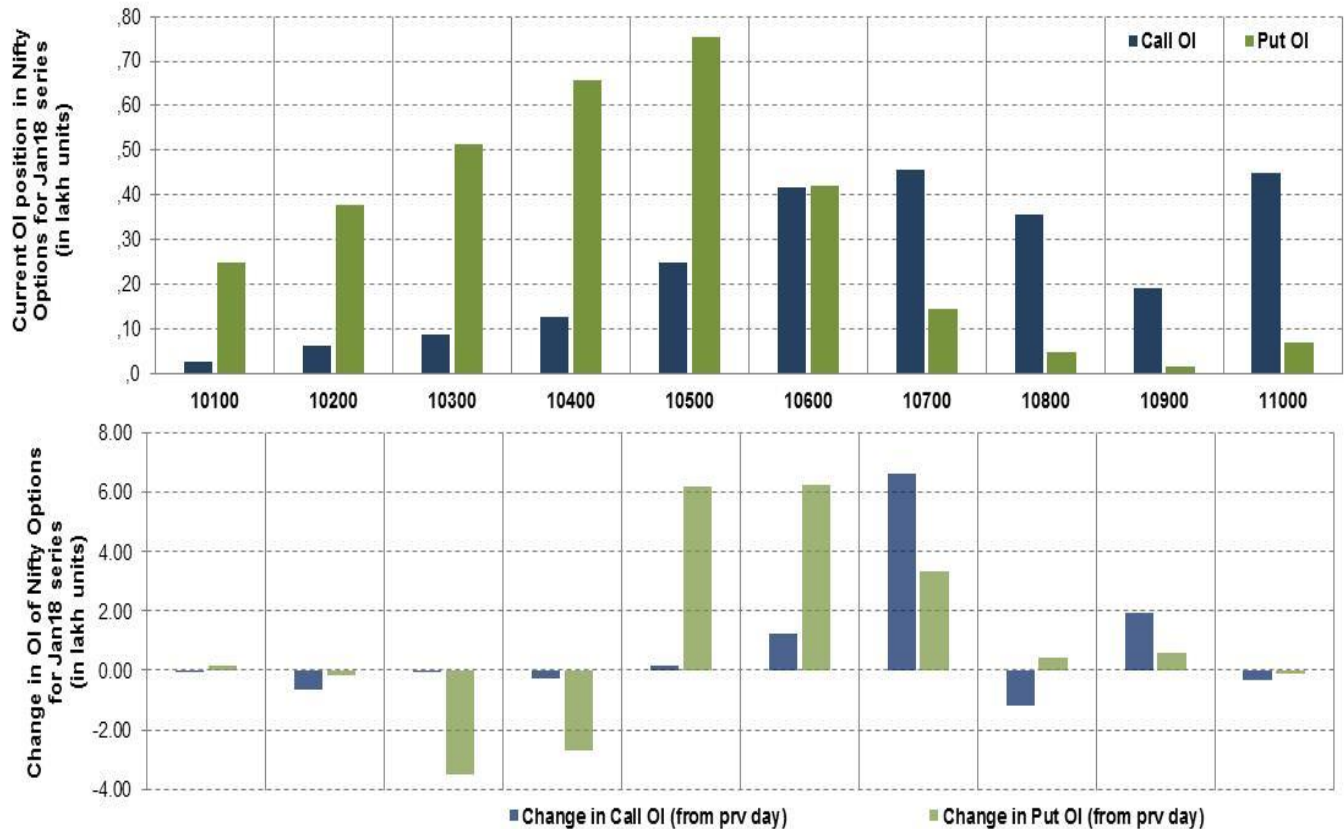
Nifty Futures



Bank Nifty Futures



Nifty Options



Note – Change in OI of Nifty Options refers to change from previous trading day
 Source-NSE, SIHL Derivatives Research (Institutional Equities)

- Among Nifty calls 10,700 SP from the Jan month expiry was the most active call with an addition of 0.06 million in open interest.
- Among Nifty puts, 10,500 SP from the Jan month expiry was the most active put with an addition of 0.62 million open interests.
- The maximum OI outstanding for Calls was at 11,000 SP (4.56mn) and that for Puts was at 10,500 SP (7.54).

Nifty Technical & Indices Levels

1-Nifty 50 - 10/01/18
Avg Avg



Nifty Cash prices have settled at 10632.20 down by 0.05% from its previous close. On the upper side it has resistance of 10700 and 10750 levels, while lower side it has support of 10600 and 10550 levels. Intraday traders should be cautious and take position accordingly.

Fresh Longs ↑ Open Interest ↑ Price					
Script	Prev. OI	Cur. OI	% Chg. OI	LTP	Price % Chg
NIITTECH	790,500	1,101,000	39.28	721.60	4.44
NMDC	33,420,000	42,522,000	27.24	156.10	0.97
ZEEL	7,053,800	8,192,600	16.14	583.40	0.08
OFSS	102,300	116,250	13.64	4119.75	1.12
Short-Covering ↓ Open Interest ↑ Price					
Script	Prev. OI	Cur. OI	% Chg. OI	LTP	Price % Chg
HINDPETRO	26,389,120	25,672,500	-2.72	422.35	1.39
WOCKPHARMA	3,698,100	3,589,200	-2.94	966.05	0.21
BAJAJFINSV	728,250	706,000	-3.06	5202.30	0.58
JISLJALEQS	46,206,000	43,911,000	-4.97	133.50	1.48
Fresh Shorts ↑ Open Interest ↓ Price					
Script	Prev. OI	Cur. OI	% Chg. OI	LTP	Price % Chg
PAGEIND	44,050	52,750	19.75	22805.70	-5.43
BERGEPAIN	2,404,600	2,833,600	17.84	263.10	-2.30
HAVELLS	3,798,000	4,454,000	17.27	549.90	-0.50
MUTHOOTFIN	1,930,500	2,248,500	16.47	458.00	-3.38
Long Unwinding ↓ Open Interest ↓ Price					
Script	Prev. OI	Cur. OI	% Chg. OI	LTP	Price % Chg
IDBI	27,900,000	26,650,000	-4.48	62.10	-2.13
RELCAPITAL	14,981,250	14,204,250	-5.19	600.85	-0.87
KAJARIACER	1,413,600	1,336,000	-5.49	750.75	-0.55
GRASIM	3,539,250	3,261,000	-7.86	1236.50	-0.49

Disclaimer:

The Information provided by SMS or in newsletter or in any document has been prepared by Shah Investor's Home Ltd (SIHL). The Information provided by SMS or in newsletter does not constitute an offer or solicitation for the purchase or sale of any financial instrument or as an official confirmation of any transaction. The information contained herein is from publicly available data or other sources believed to be reliable, but we do not represent that it is accurate or complete and it should not be relied on as such. SIHL or any of its affiliates/ group companies shall not be in any way responsible for any loss or damage that may arise to any person from any inadvertent error in the information contained in this report or SMS. This Information provided by SMS, reports or in newsletter is provided for assistance only and is not intended to be and must not alone be taken as the basis for an investment decision. The user assumes the entire risk of any use made of this information. Each recipient of this Information provided by SMS, report or in newsletter should make such investigation as it deems necessary to arrive at an independent evaluation of an investment in the securities of companies referred to in this information provided by SMS, report or in newsletter (including the merits and risks involved), and should consult his own advisors to determine the merits and risks of such investment. The investment discussed or views expressed may not be suitable for all investors. This information is strictly confidential and is being furnished to you solely for your information.

The information should not be reproduced or redistributed or passed on directly or indirectly in any form to any other person or published, copied, in whole or in part, for any purpose. The information provided by report or SMS is not directed or intended for distribution to, or use by, any person or entity who is a citizen or resident of or located in any locality, state, country or other jurisdiction, where such distribution, publication, availability or use would be contrary to law, regulation or which would subject SIHL and affiliates/ group companies to any registration or licensing requirements within such jurisdiction. The distribution of this Information provided by SMS or in newsletter in certain jurisdictions may be restricted by law, and persons in whose possession this Information provided by SMS or in newsletter comes, should inform themselves about and observe, any such restrictions. The information given or Information provided by SMS, report or in newsletter is as of the date of the issue date of report or the date on which SMS provided and there can be no assurance that future results or events will be consistent with this information. This information is subject to change without any prior notice. SIHL reserves the right to make modifications and alterations to this statement as may be required from time to time. However, SIHL is under no obligation to update or keep the information current.

Nevertheless, SIHL is committed to providing independent and transparent recommendation to its client and would be happy to provide any information in response to specific client queries. Neither SIHL nor any of its affiliates, group companies, directors, employees, agents or representatives shall be liable for any damages whether direct, indirect, special or consequential including lost revenue or lost profits that may arise from or in connection with the use of the information. Past performance is not necessarily a guide to future performance. The disclosures of interest statements incorporated in the Information provided by SMS, report or in newsletter are provided solely to enhance the transparency and should not be treated as endorsement of the views expressed in the report. The analyst for this report certifies that all of the views expressed in this report accurately reflect his or her personal views about the subject company or companies and its or their securities, and no part of his or her compensation was, is or will be, directly or indirectly related to specific recommendations or views expressed in this report.

About Us:

Shah Investor's Home Ltd (SIHL) is an ISO 9001:2008 Certified financial Services Company established in 1994 at Ahmadabad, Gujarat. Customer satisfaction is guaranteed through our diversified product portfolio, professional management and customer first attitude. SIHL was the first broking house in Gujarat with membership in National Securities Depository Ltd (NSDL) and was the first broking name providing services in NSE F&O in Ahmedabad. Today, SIHL ranks among the top most players in Gujarat in retail stock broking area with 45 branches, 350 franchisee across India and providing service to more than 1,25,000 clients.