

Daily Derivatives & Market Report

CONTENTS

Page No.	Particulars
2	Market Summary
3	Nifty Futures – Derivatives Snap
4	Bank Nifty Futures – Derivatives Snap
5	Activity in Nifty Options
6	What do Nifty Technical suggest
7	Derivative Analysis
8	Disclaimer

Index Trend Analysis

Pivot(Daily)	Close	S2	S1	Pivot	R1	R2	Daily	Weekly	Monthly
Nifty	10245	10140	10192	10224	10277	10308	Buy	Buy	Buy
Sensex	33371	33060	33215	33309	33464	33558	Buy	Buy	Buy
Nifty Futures	10285	10172	10228	10262	10319	10353	Buy	Buy	Buy
Bank Nifty	24511	24151	24331	24434	24614	24718	Buy	Buy	Buy
CNX IT	12615	12476	12546	12627	12697	12778	Sell	Buy	Buy

Market Summary

Domestic Indices	Close	Points	% Chg
SENSEX	33370.6	115.3	0.4
NIFTY	10245.0	33.2	0.3
MIDCAP	16335.0	148.7	0.9
SMLCAP	17628.5	234.2	1.4
BSEFMC	10452.0	13.7	0.1
AUTO	24780.8	208.1	0.9
POWER	2187.0	33.9	1.6
REALTY	2252.1	10.8	0.5
BSE IT	12225.3	-29.6	-0.2
BANDEX	27391.9	293.6	1.1
OILGAS	14686.7	91.0	0.6
METAL	13480.4	65.8	0.5

Currency Futures	Close	Pre. Pts	% Chg
25-Apr-18 EUR-INR	80.24	81.10	-1.06
25-Apr-18 USD-INR	65.19	65.34	-0.23
25-Apr-18 GBP-INR	91.59	92.51	-0.99
25-Apr-18 JPY-INR	61.48	61.71	-0.38

Advance/ Decline	Adv	Dec	Un Ch.
NSE	1348	446	80
BSE	1848	798	141

FII/DII Capital Mkt*	Buy	Sell	Net
FII	5463	5840	(377)
DII	3330	2851	479

*NOTE: - FII AND DII data figure is provisional

Market Commentary

Extending previous session's gains, Indian equity benchmarks ended the Tuesday's trade with a gain of one third of a percent. Markets started the session on cautious note and entered into red terrain in morning deals with escalating trade tensions between the US and China. Investors also remained on sidelines ahead to the Reserve Bank of India's (RBI) policy decision on April 5 for directional cues. The central bank is expected to maintain status quo on rates despite increased risks to inflation posed by rising oil prices and a hike in minimum support price (MSP) announced in the Budget 2018. Traders also remained concerned with ICRA's report that more Indian companies are likely to default on their borrowings in the fiscal year that started in April compared with the previous year on higher interest costs and a deterioration in business conditions. Adding to the pessimism, India's manufacturing sector activity expanded at its slowest pace in the month of March to fall at 5-month low. The seasonally adjusted Nikkei India Manufacturing Purchasing Managers' Index (PMI) - a composite single-figure indicator of manufacturing performance - slowed down to 51.0 in March from 52.1 in February.

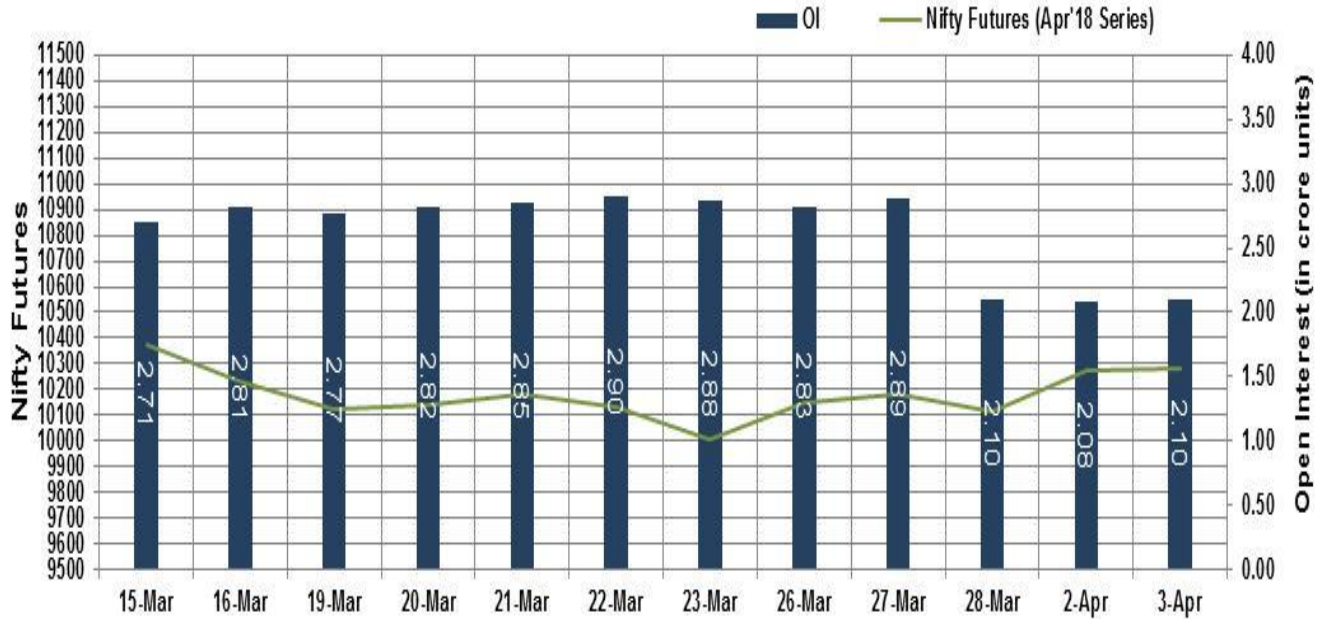
However, markets took U-turn and started paring losses to enter into green terrain in last leg of trade with traders taking support from report that the government's revenue collection during fiscal year 2017-18 gone up by 17.1% at Rs 9.95 lakh crore, supported by the addition of one crore new assesseses who have started filing income tax returns.

Market Turnover & FII Derivative Data

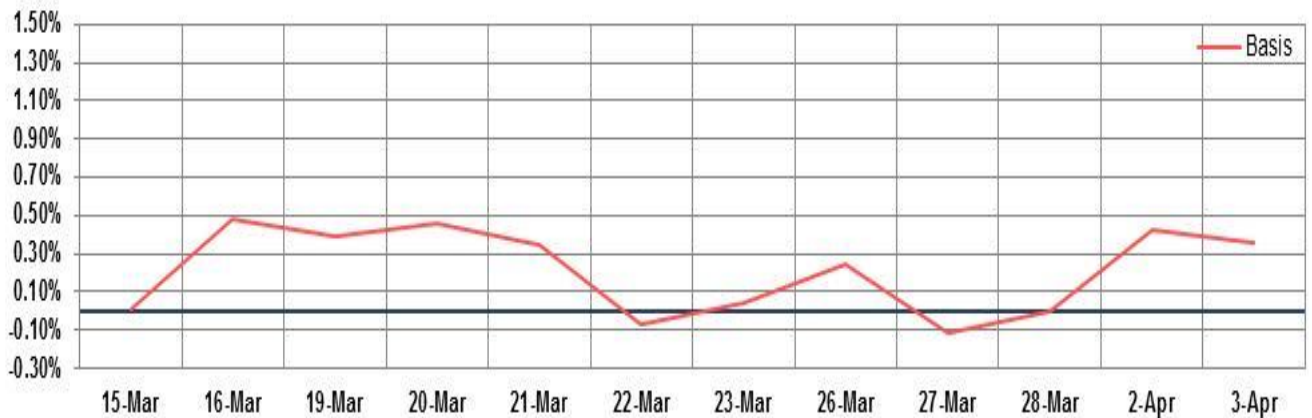
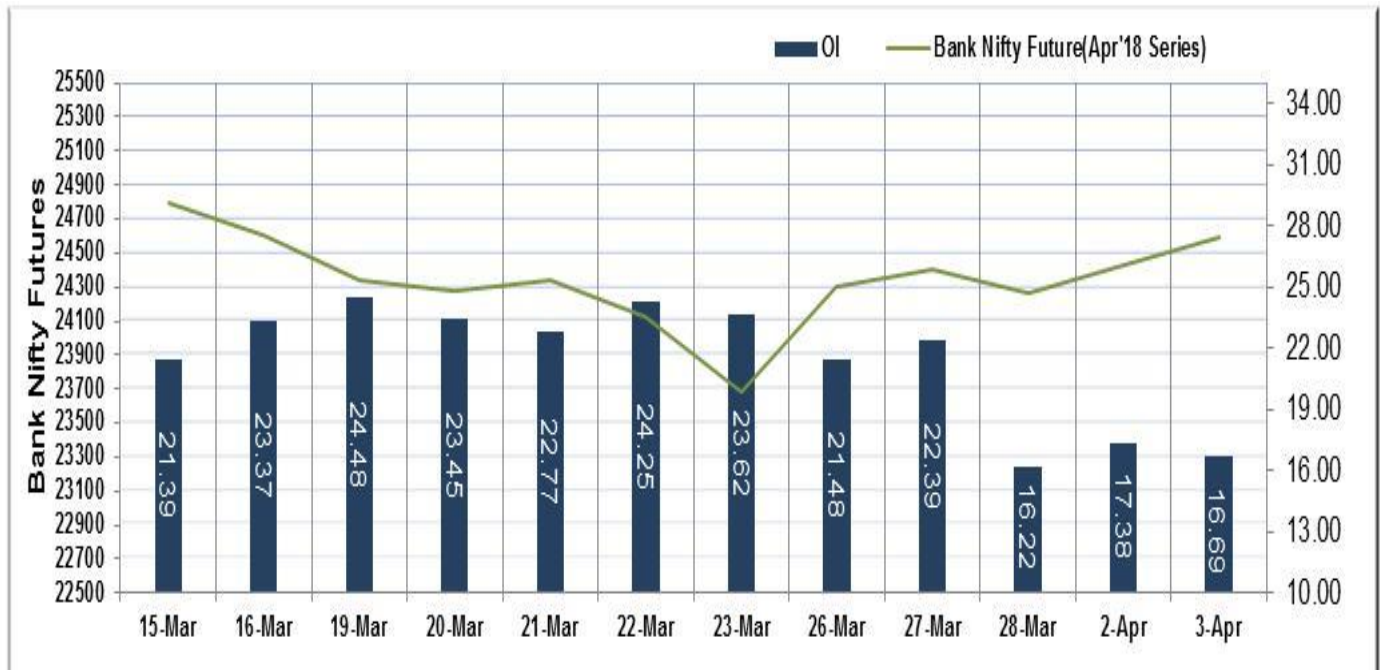
Market TO	Current	Previous	Net%
BSE CASH	4765	2711	76
NSE CASH	28252	26682	6
NSE FO	433298	379097	14

FII Derivatives	Buy	Sell	Net
Ind. Futures	1185	1879	(694)
Ind. Options	47989	46109	1880
Stk. Futures	8659	8770	(112)
Stk. Options	3998	3935	62

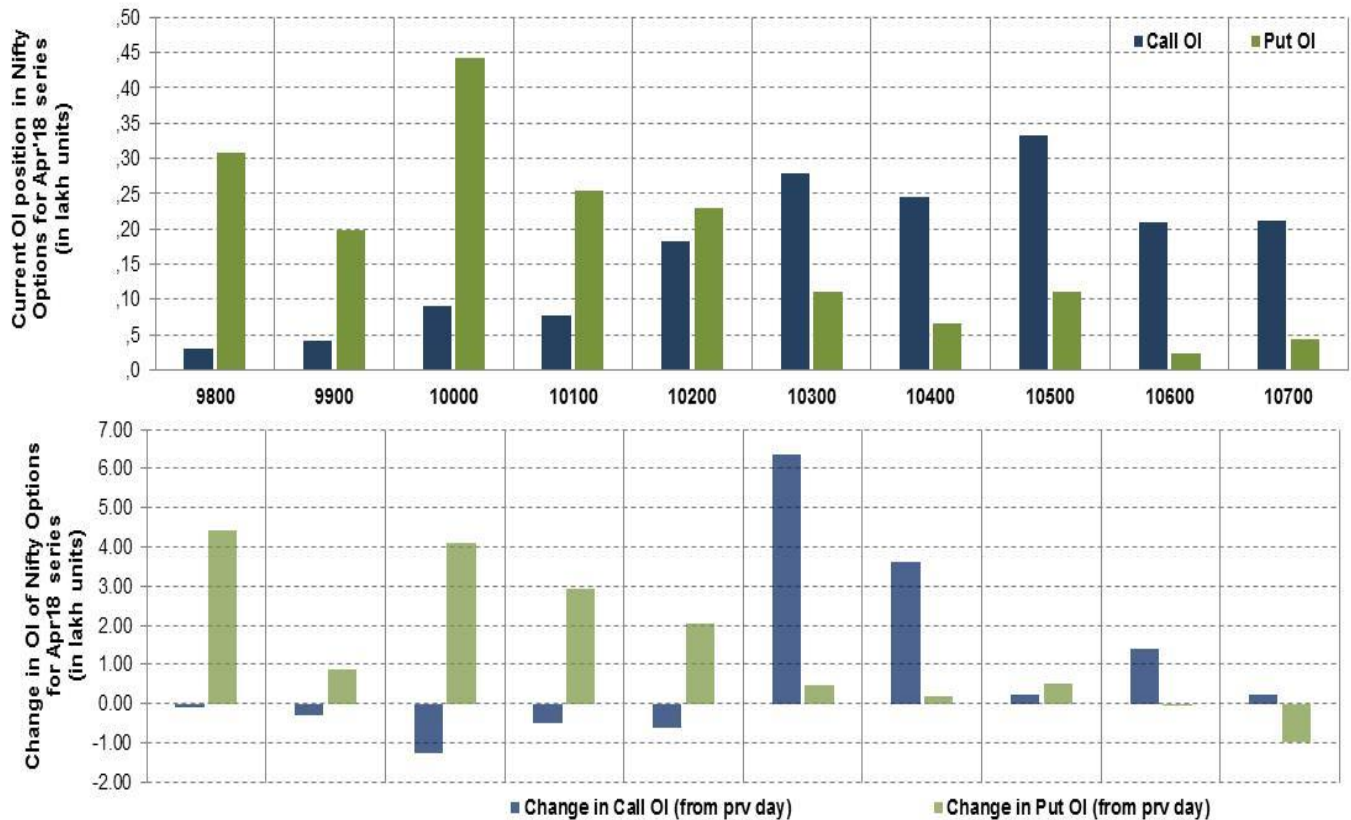
Nifty Futures



Bank Nifty Futures



Nifty Options

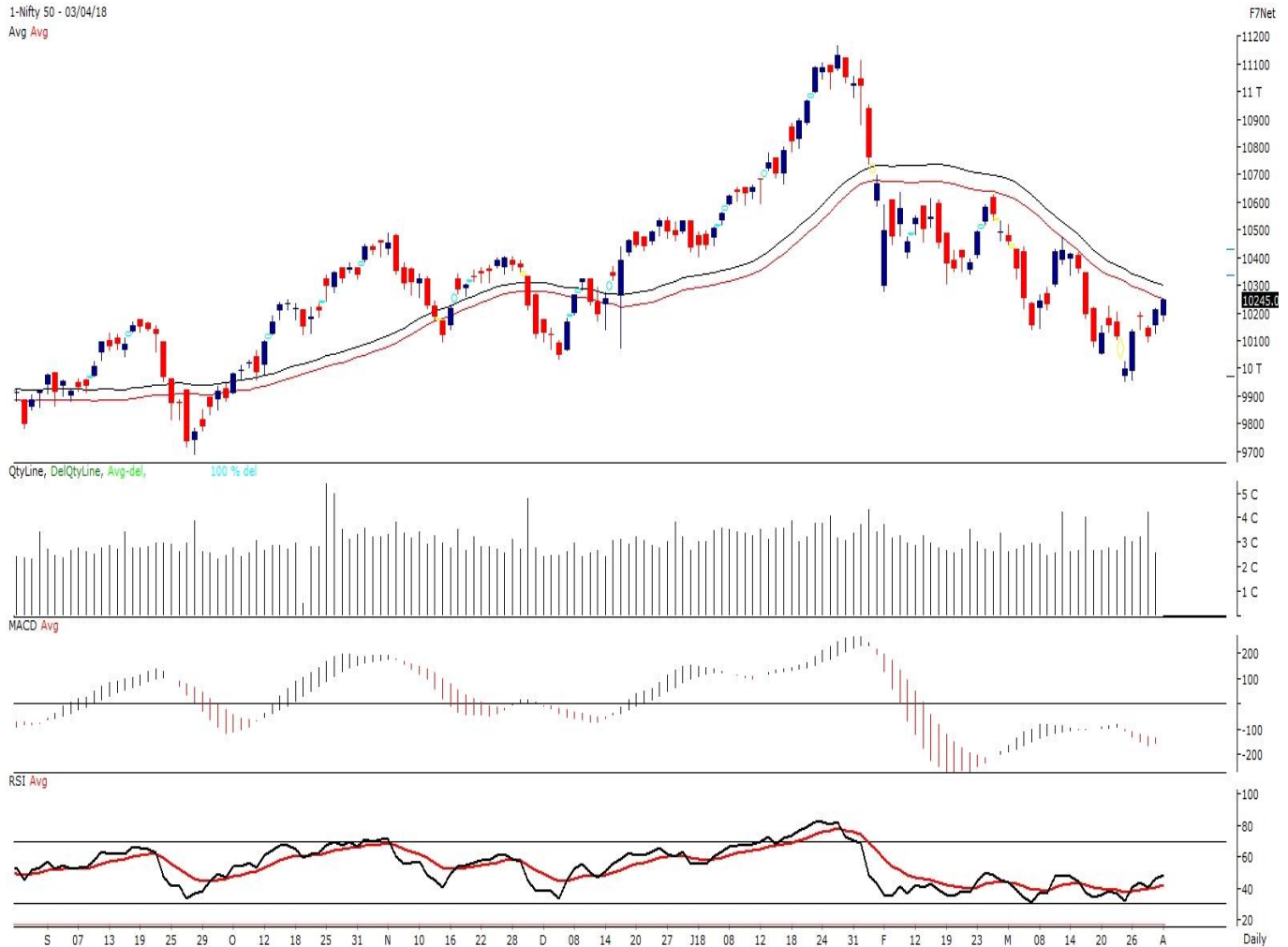


Note – Change in OI of Nifty Options refers to change from previous trading day
 Source-NSE, SIHL Derivatives Research (Institutional Equities)

- Among Nifty calls 10,500 SP from the April month expiry was the most active call with an addition of 0.24 million in open interest.
- Among Nifty puts, 10,000 SP from the April month expiry was the most active put with an addition of 0.41 million open interests.
- The maximum OI outstanding for Calls was at 10,500 SP (3.31mn) and that for Puts was at 10,000 SP (4.41mn)

Nifty Technical & Indices Levels

1-Nifty 50 - 03/04/18
 Avg Avg



Nifty Cash prices have settled at 10245 up by 0.33% from its previous close. On the upper side it has resistance of 10300 and 10350 levels, while lower side it has support of 10200 and 10150 levels. Intraday traders should be cautious and take position accordingly.

Fresh Longs ↑ Open Interest ↑ Price					
Script	Prev. OI	Cur. OI	% Chg. OI	LTP	Price % Chg
MRF	36,225	43,215	19.30	75923.05	3.25
BALKRISIND	872,000	1,010,400	15.87	1162.90	6.88
JETAIRWAYS	6,694,800	7,600,800	13.53	617.35	1.88
CHOLAFIN	398,500	446,000	11.92	1512.25	2.06
Short-Covering ↓ Open Interest ↑ Price					
Script	Prev. OI	Cur. OI	% Chg. OI	LTP	Price % Chg
BEML	2,210,100	2,114,100	-4.34	1123.15	2.98
IBULHSGFIN	15,540,000	14,853,600	-4.42	1302.45	4.17
IOC	39,714,000	37,851,000	-4.69	174.80	1.95
ADANIENT	17,264,000	15,580,000	-9.75	162.80	0.87
Fresh Shorts ↑ Open Interest ↓ Price					
Script	Prev. OI	Cur. OI	% Chg. OI	LTP	Price % Chg
HINDALCO	42,742,000	48,940,500	14.50	209.10	-1.69
KAJARIACER	1,168,000	1,333,600	14.18	579.05	-2.30
BERGEPAIN	1,251,800	1,412,400	12.83	259.10	-0.84
IGL	6,151,750	6,913,500	12.38	279.85	-0.52
Long Unwinding ↓ Open Interest ↓ Price					
Script	Prev. OI	Cur. OI	% Chg. OI	LTP	Price % Chg
RELCAPITAL	12,314,250	11,975,250	-2.75	443.75	-0.80
APOLLOHOSP	603,000	579,500	-3.90	1099.45	-0.43
MINDTREE	1,753,200	1,676,400	-4.38	802.90	-1.25
MARICO	4,472,000	4,128,800	-7.67	327.15	-1.09

Disclaimer:

The Information provided by SMS or in newsletter or in any document has been prepared by Shah Investor's Home Ltd (SIHL). The Information provided by SMS or in newsletter does not constitute an offer or solicitation for the purchase or sale of any financial instrument or as an official confirmation of any transaction. The information contained herein is from publicly available data or other sources believed to be reliable, but we do not represent that it is accurate or complete and it should not be relied on as such. SIHL or any of its affiliates/ group companies shall not be in any way responsible for any loss or damage that may arise to any person from any inadvertent error in the information contained in this report or SMS. This Information provided by SMS, reports or in newsletter is provided for assistance only and is not intended to be and must not alone be taken as the basis for an investment decision. The user assumes the entire risk of any use made of this information. Each recipient of this Information provided by SMS, report or in newsletter should make such investigation as it deems necessary to arrive at an independent evaluation of an investment in the securities of companies referred to in this information provided by SMS, report or in newsletter (including the merits and risks involved), and should consult his own advisors to determine the merits and risks of such investment. The investment discussed or views expressed may not be suitable for all investors. This information is strictly confidential and is being furnished to you solely for your information.

The information should not be reproduced or redistributed or passed on directly or indirectly in any form to any other person or published, copied, in whole or in part, for any purpose. The information provided by report or SMS is not directed or intended for distribution to, or use by, any person or entity who is a citizen or resident of or located in any locality, state, country or other jurisdiction, where such distribution, publication, availability or use would be contrary to law, regulation or which would subject SIHL and affiliates/ group companies to any registration or licensing requirements within such jurisdiction. The distribution of this Information provided by SMS or in newsletter in certain jurisdictions may be restricted by law, and persons in whose possession this Information provided by SMS or in newsletter comes, should inform themselves about and observe, any such restrictions. The information given or Information provided by SMS, report or in newsletter is as of the date of the issue date of report or the date on which SMS provided and there can be no assurance that future results or events will be consistent with this information. This information is subject to change without any prior notice. SIHL reserves the right to make modifications and alterations to this statement as may be required from time to time. However, SIHL is under no obligation to update or keep the information current.

Nevertheless, SIHL is committed to providing independent and transparent recommendation to its client and would be happy to provide any information in response to specific client queries. Neither SIHL nor any of its affiliates, group companies, directors, employees, agents or representatives shall be liable for any damages whether direct, indirect, special or consequential including lost revenue or lost profits that may arise from or in connection with the use of the information. Past performance is not necessarily a guide to future performance. The disclosures of interest statements incorporated in the Information provided by SMS, report or in newsletter are provided solely to enhance the transparency and should not be treated as endorsement of the views expressed in the report. The analyst for this report certifies that all of the views expressed in this report accurately reflect his or her personal views about the subject company or companies and its or their securities, and no part of his or her compensation was, is or will be, directly or indirectly related to specific recommendations or views expressed in this report.

About Us:

Shah Investor's Home Ltd (SIHL) is an ISO 9001:2008 Certified financial Services Company established in 1994 at Ahmadabad, Gujarat. Customer satisfaction is guaranteed through our diversified product portfolio, professional management and customer first attitude. SIHL was the first broking house in Gujarat with membership in National Securities Depository Ltd (NSDL) and was the first broking name providing services in NSE F&O in Ahmedabad. Today, SIHL ranks among the top most players in Gujarat in retail stock broking area with 45 branches, 350 franchisee across India and providing service to more than 1,25,000 clients.