

Daily Derivatives & Market Report

CONTENTS

Page No.	Particulars
2	Market Summary
3	Nifty Futures – Derivatives Snap
4	Bank Nifty Futures – Derivatives Snap
5	Activity in Nifty Options
6	What do Nifty Technical suggest
7	Derivative Analysis
8	Disclaimer

Index Trend Analysis

Pivot(Daily)	Close	S2	S1	Pivot	R1	R2	Daily	Weekly	Monthly
Nifty	11053	10975	11014	11038	11077	11102	Buy	Buy	Neutral
Sensex	36636	36377	36506	36586	36716	36796	Buy	Buy	Neutral
Nifty Futures	11086	11010	11048	11071	11109	11133	Buy	Buy	Neutral
Bank Nifty	27626	27410	27518	27600	27708	27789	Buy	Buy	Neutral
CNX IT	15735	15610	15673	15744	15806	15877	Neutral	Buy	Buy
CNX Midcap	17464	17302	17383	17473	17554	17644	Buy	Neutral	Neutral
CNX Small Cap	6381	6324	6353	6388	6416	6451	Buy	Neutral	Sell

Market Summary

Domestic Indices	Close	Points	% Chg
SENSEX	36636.1	193.6	0.5
NIFTY	11053.0	65.6	0.6
MIDCAP	14866.2	71.9	0.5
SMLCAP	14556.7	139.8	1.0
BSEFMC	11523.9	8.5	0.1
AUTO	19458.0	-46.6	-0.2
POWER	1904.6	20.1	1.1
REALTY	1841.5	10.2	0.6
BSE IT	15272.8	44.7	0.3
BANSEX	30969.5	80.4	0.3
OILGAS	14433.4	112.4	0.8
METAL	11284.1	73.7	0.7

Currency Futures	Close	Pre. Pts	% Chg
27-Mar-19 EUR-INR	79.83	80.26	-0.53
27-Mar-19 USD-INR	70.45	70.68	-0.32
27-Mar-19 GBP-INR	92.76	93.14	-0.41
27-Mar-19 JPY-INR	63.11	63.29	-0.28

Advance/ Decline	Adv	Dec	Un Ch.
NSE	1242	613	74
BSE	1685	1009	156

FII/DII Capital Mkt*	Buy	Sell	Net
FII	6369	5238	1131
DII	3504	4382	(878)

*NOTE: - FII AND DII data figure is provisional

Market Commentary

Bulls held onto gains for third straight session on Wednesday, with key Indian equity benchmarks closing the day with gains of over half a percent. Markets made a cheerful start, aided by the Reserve Bank of India's (RBI) statement that it would infuse Rs 12,500 crore into the financial system on March 07, 2019. The purchase will be made through open market operations (OMOs). The market participants remained optimistic with the Union Minister for Finance and Corporate Affairs, Arun Jaitley's statement that the Government is committed to facilitate trade and industry in the country so that the momentum of the growth continues to move-up. He also said that the process of reforms in case of direct and indirect taxes will continue in order to facilitate and further expedite the process of ease of doing business in the country. Adding some comfort, Commerce Secretary Anup Wadhawan said that the US decision to withdraw duty benefits on Indian products under the Generalized System of Preferences (GSP) programme will not have a significant impact on exports to America.

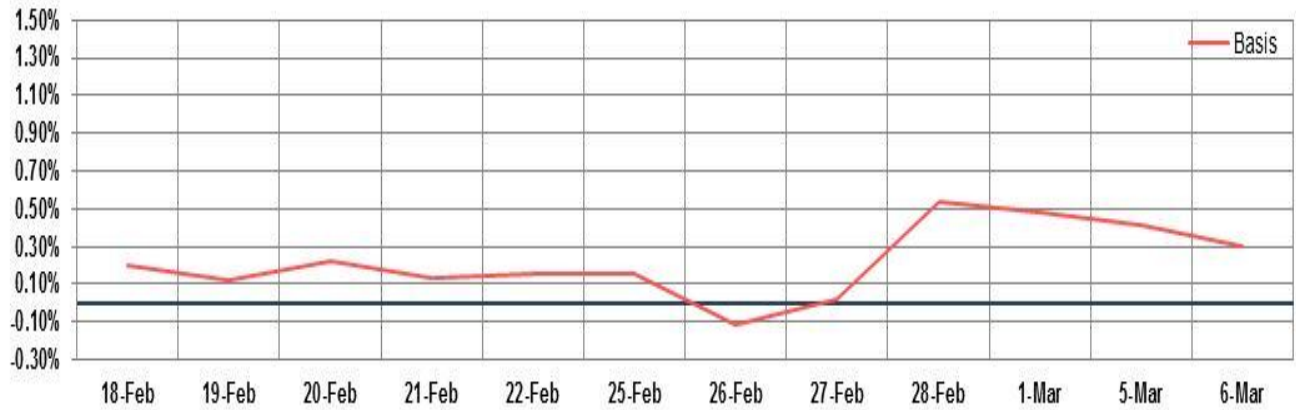
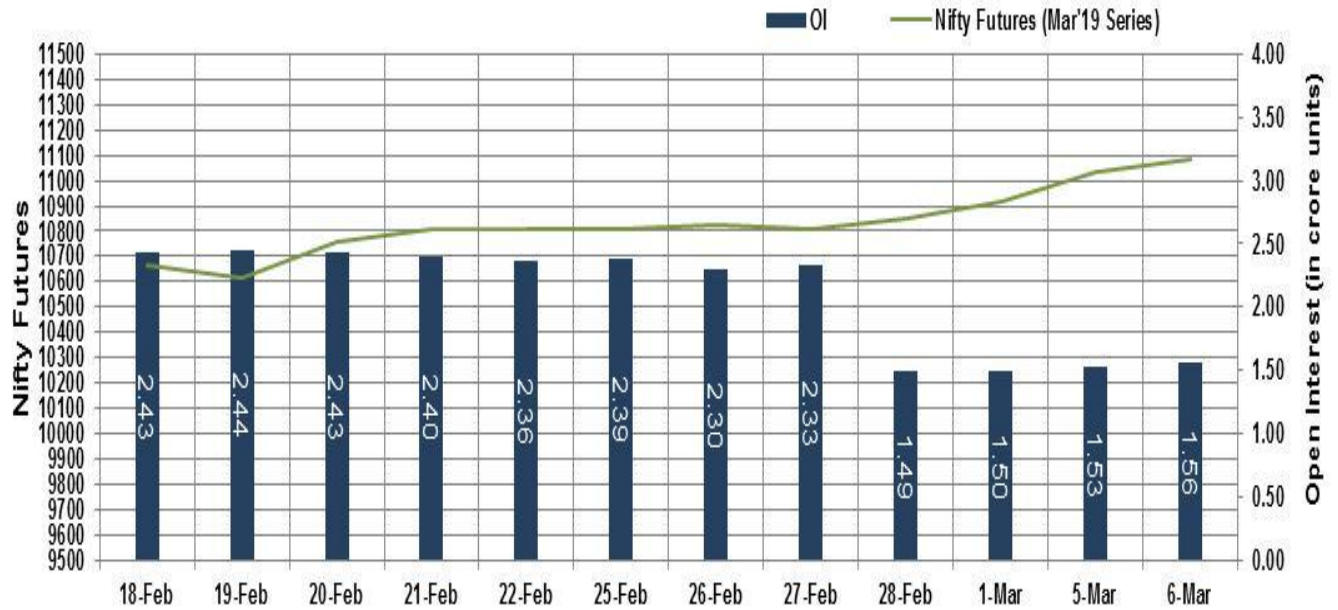
Back home, cement industry stocks ended higher, buoyed with credit rating agency, Crisil's report stating that the recent steep hike in cement prices expected to boost operating profitability of cement manufacturers. It added that the price hikes, coupled with falling costs and rising demand growth, will enable 200-250 basis points on-year improvement in margins in the current quarter. Stocks related to the sugar sector remained buzzing with the government's statement that Sugar mills can sell 24.5 lakh tonne of the sweetener in the open market in the current month.

Market Turnover & FII Derivative Data

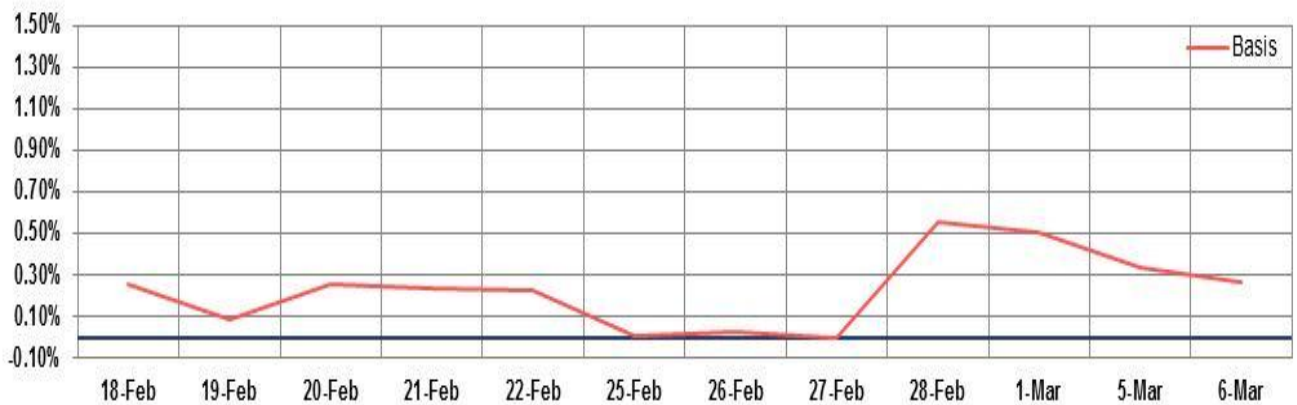
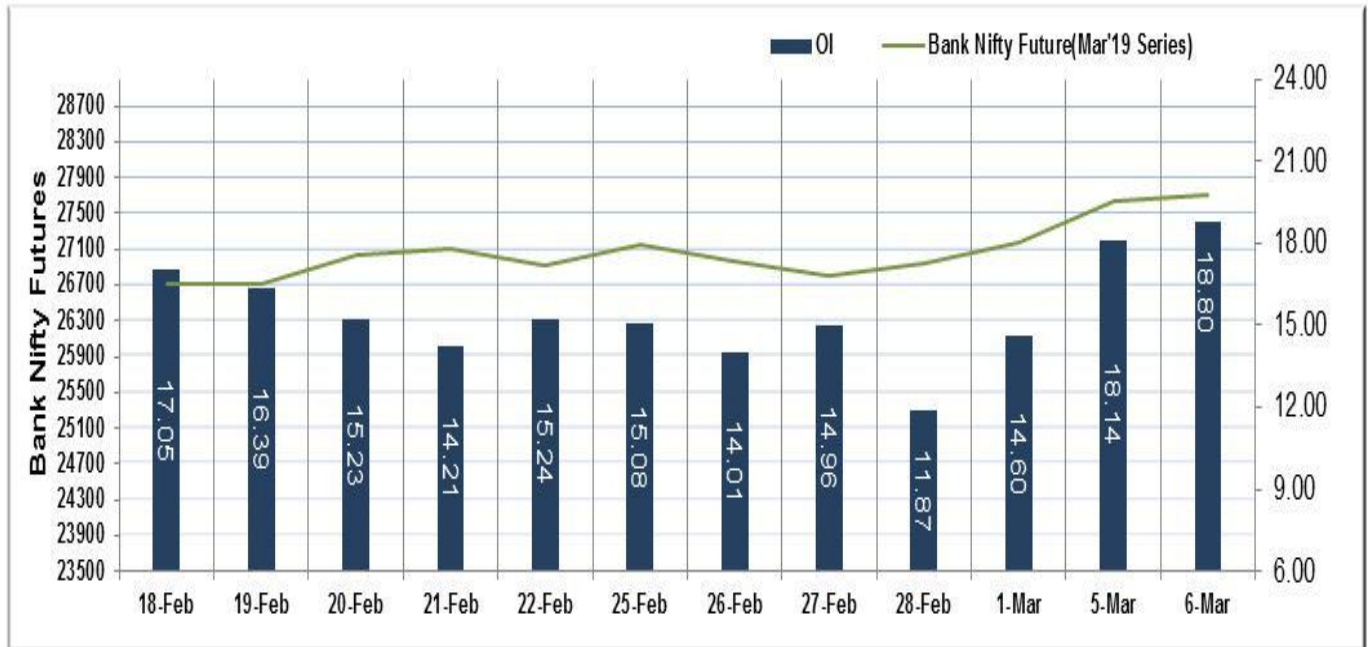
Market TO	Current	Previous	Net%
BSE CASH	3401	3411	(0)
NSE CASH	38821	37604	3
NSE FO	1020987	841770	21

FII Derivatives	Buy	Sell	Net
Ind. Futures	3174	2797	377
Ind. Options	167575	167287	289
Stk. Futures	12766	12604	161
Stk. Options	8061	7921	140

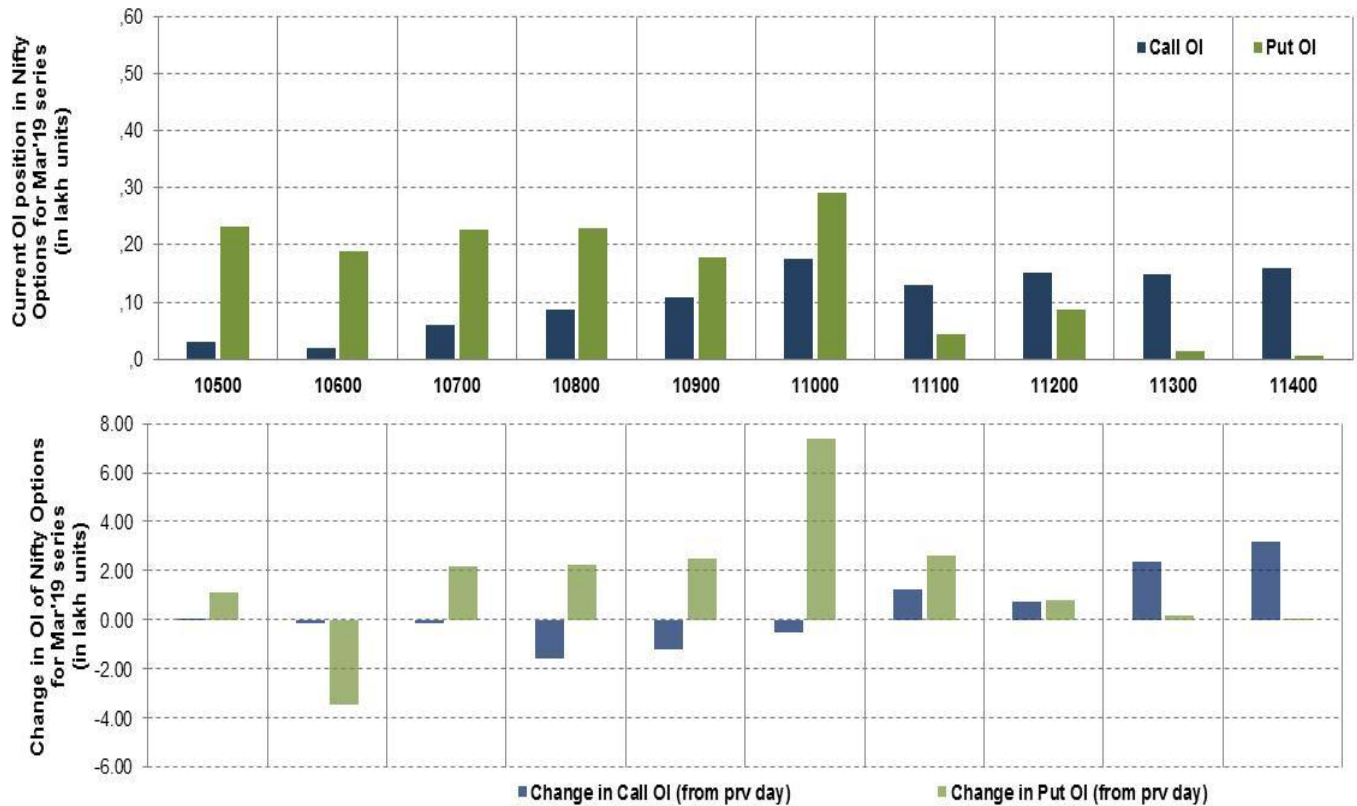
Nifty Futures



Bank Nifty Futures



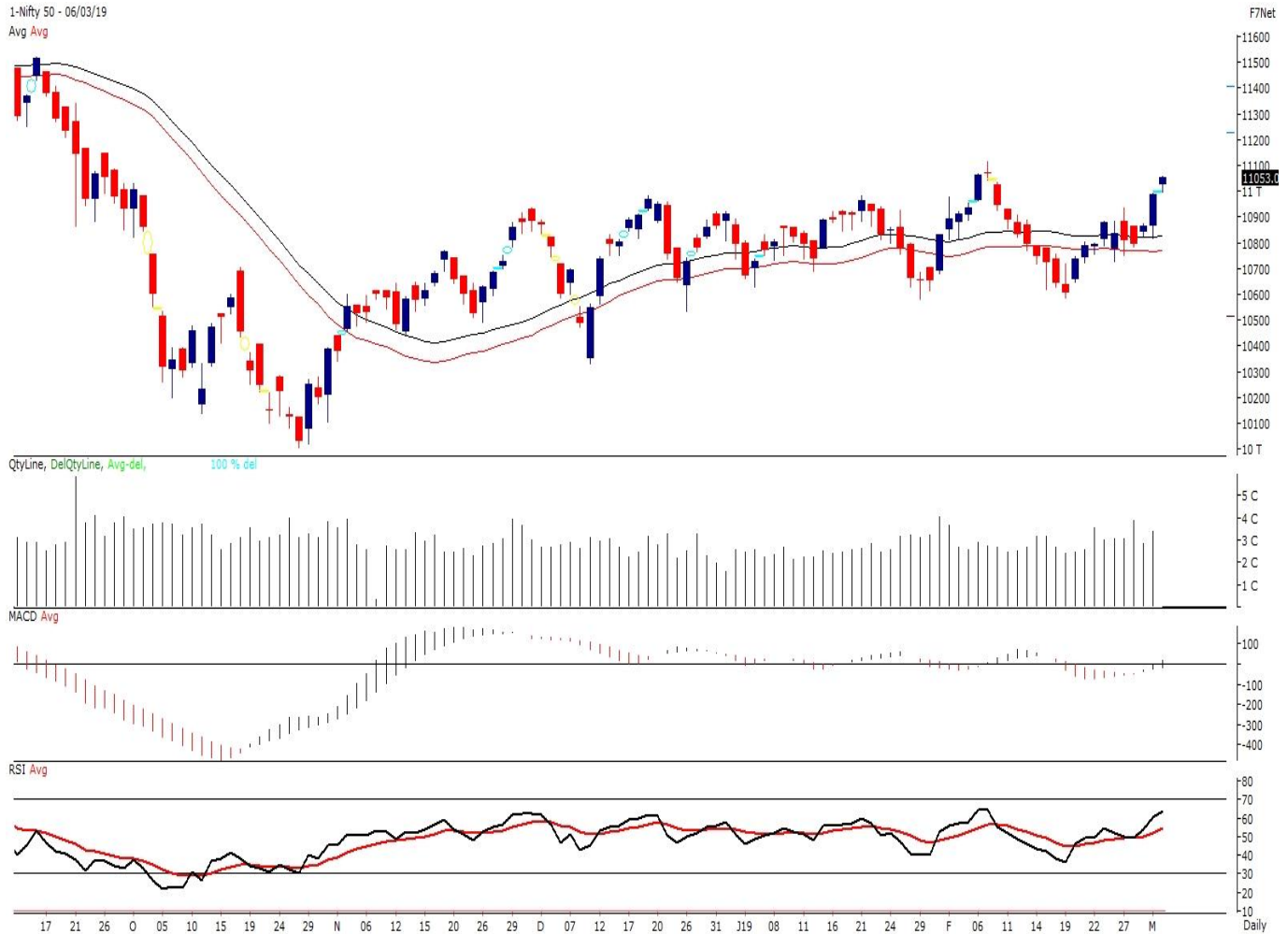
Nifty Options



Note – Change in OI of Nifty Options refers to change from previous trading day
 Source-NSE, SIHL Derivatives Research (Institutional Equities)

- Among Nifty calls 11,000 SP from the Mar month expiry was the most active call with a reduction of 0.05 million in open interest.
- Among Nifty puts, 11,000 SP from the Mar month expiry was the most active put with a reduction of 0.74 million open interests.
- The maximum OI outstanding for Calls was at 11,000 SP (1.76mn) and that for Puts was at 11,000 SP (2.92mn)

Nifty Technical & Indices Levels



Nifty Cash prices have settled at 11053 up by 0.60 percent from the previous close. On the upper side it has resistance of 11100 and 11150 levels, while lower side it has support of 11000 and 10950 levels. Intraday traders should be cautious and take position accordingly.

Fresh Longs ↑ Open Interest ↑ Price					
Script	Prev. OI	Cur. OI	% Chg. OI	LTP	Price % Chg
POWERGRID	20,932,000	29,056,000	38.81	184.40	1.85
AMARAJABAT	575,400	751,100	30.54	753.45	1.74
JUBLFOOD	2,685,500	3,414,000	27.13	1341.95	4.58
BSOFT	3,638,250	4,594,500	26.28	116.45	7.62
Short-Covering ↓ Open Interest ↑ Price					
Script	Prev. OI	Cur. OI	% Chg. OI	LTP	Price % Chg
LICHSGFIN	8,845,100	8,549,200	-3.35	491.75	0.71
OIL	4,853,772	4,683,822	-3.50	183.00	0.30
SUZLON	230,812,000	222,680,000	-3.52	7.85	4.67
MRF	37,560	34,980	-6.87	58380.05	0.50
Fresh Shorts ↑ Open Interest ↓ Price					
Script	Prev. OI	Cur. OI	% Chg. OI	LTP	Price % Chg
WIPRO	24,902,400	33,801,600	35.74	279.70	-23.02
AMBUJACEM	12,367,500	14,410,000	16.52	222.75	-0.38
BEML	1,440,600	1,634,500	13.46	909.55	-0.47
HDFCBANK	10,117,250	11,441,750	13.09	2109.00	-0.22
Long Unwinding ↓ Open Interest ↓ Price					
Script	Prev. OI	Cur. OI	% Chg. OI	LTP	Price % Chg
JUSTDIAL	2,504,600	2,328,200	-7.04	539.75	-0.03
PCJEWELLER	10,679,500	9,828,000	-7.97	77.95	-2.74
IGL	3,533,750	3,212,000	-9.11	292.00	-2.86
RPOWER	114,064,000	99,296,000	-12.95	12.65	-1.56

Disclaimer:

The Information provided by SMS or in newsletter or in any document has been prepared by Shah Investor's Home Ltd (SIHL). The Information provided by SMS or in newsletter does not constitute an offer or solicitation for the purchase or sale of any financial instrument or as an official confirmation of any transaction. The information contained herein is from publicly available data or other sources believed to be reliable, but we do not represent that it is accurate or complete and it should not be relied on as such. SIHL or any of its affiliates/ group companies shall not be in any way responsible for any loss or damage that may arise to any person from any inadvertent error in the information contained in this report or SMS. This Information provided by SMS, reports or in newsletter is provided for assistance only and is not intended to be and must not alone be taken as the basis for an investment decision. The user assumes the entire risk of any use made of this information. Each recipient of this Information provided by SMS, report or in newsletter should make such investigation as it deems necessary to arrive at an independent evaluation of an investment in the securities of companies referred to in this information provided by SMS, report or in newsletter (including the merits and risks involved), and should consult his own advisors to determine the merits and risks of such investment. The investment discussed or views expressed may not be suitable for all investors. This information is strictly confidential and is being furnished to you solely for your information.

The information should not be reproduced or redistributed or passed on directly or indirectly in any form to any other person or published, copied, in whole or in part, for any purpose. The information provided by report or SMS is not directed or intended for distribution to, or use by, any person or entity who is a citizen or resident of or located in any locality, state, country or other jurisdiction, where such distribution, publication, availability or use would be contrary to law, regulation or which would subject SIHL and affiliates/ group companies to any registration or licensing requirements within such jurisdiction. The distribution of this Information provided by SMS or in newsletter in certain jurisdictions may be restricted by law, and persons in whose possession this Information provided by SMS or in newsletter comes, should inform themselves about and observe, any such restrictions. The information given or Information provided by SMS, report or in newsletter is as of the date of the issue date of report or the date on which SMS provided and there can be no assurance that future results or events will be consistent with this information. This information is subject to change without any prior notice. SIHL reserves the right to make modifications and alterations to this statement as may be required from time to time. However, SIHL is under no obligation to update or keep the information current.

Nevertheless, SIHL is committed to providing independent and transparent recommendation to its client and would be happy to provide any information in response to specific client queries. Neither SIHL nor any of its affiliates, group companies, directors, employees, agents or representatives shall be liable for any damages whether direct, indirect, special or consequential including lost revenue or lost profits that may arise from or in connection with the use of the information. Past performance is not necessarily a guide to future performance. The disclosures of interest statements incorporated in the Information provided by SMS, report or in newsletter are provided solely to enhance the transparency and should not be treated as endorsement of the views expressed in the report. The analyst for this report certifies that all of the views expressed in this report accurately reflect his or her personal views about the subject company or companies and its or their securities, and no part of his or her compensation was, is or will be, directly or indirectly related to specific recommendations or views expressed in this report.

About Us:

Shah Investor's Home Ltd (SIHL) is an ISO 9001:2008 Certified financial Services Company established in 1994 at Ahmadabad, Gujarat. Customer satisfaction is guaranteed through our diversified product portfolio, professional management and customer first attitude. SIHL was the first broking house in Gujarat with membership in National Securities Depository Ltd (NSDL) and was the first broking name providing services in NSE F&O in Ahmedabad. Today, SIHL ranks among the top most players in Gujarat in retail stock broking area with 45 branches, 350 franchisee across India and providing service to more than 1,25,000 clients.