

Daily Derivatives & Market Report

CONTENTS

Page No.	Particulars
2	Market Summary
3	Nifty Futures – Derivatives Snap
4	Bank Nifty Futures – Derivatives Snap
5	Activity in Nifty Options
6	What do Nifty Technical suggest
7	Derivative Analysis
8	Disclaimer

Index Trend Analysis

Pivot(Daily)	Close	S2	S1	Pivot	R1	R2	Daily	Weekly	Monthly
Nifty	11662	11387	11524	11771	11908	12155	Sell	Neutral	Buy
Sensex	39736	38816	39276	40091	40550	41365	Sell	Neutral	Buy
Nifty Futures	11655	11372	11513	11767	11908	12162	Sell	Neutral	Buy
Bank Nifty	29821	28999	29410	30164	30575	31330	Sell	Neutral	Buy
CNX IT	16283	15839	16061	16190	16412	16542	Neutral	Buy	Neutral
CNX Midcap	17521	17051	17286	17709	17944	18367	Neutral	Buy	Neutral
CNX Small Cap	6057	5883	5970	6127	6214	6371	Neutral	Buy	Neutral

Market Summary

Domestic Indices	Close	Points	% Chg
SENSEX	39735.53	-987.96	-2.43
NIFTY	11661.85	-300.25	-2.51
MIDCAP	15119.65	-342.36	-2.21
SMLCAP	14344.70	-323.26	-2.20
BSEFMC	11380.10	-261.44	-2.25
AUTO	17712.17	-449.01	-2.47
POWER	1842.47	-56.78	-2.99
REALTY	2328.67	-197.50	-7.82
BSE IT	16094.92	223.46	1.41
BANKEK	34161.38	-1128	-3.20
OILGAS	13563.33	-360.34	-2.59
METAL	9161.83	-332.27	-3.50

Currency Futures	Close	Pre. Pts	% Chg
26-Feb-20 USD-INR	71.56	-0.12	-0.16
26-Feb-20 EUR-INR	79.09	-0.03	-0.04
26-Feb-20 GBP-INR	93.91	0.55	0.59
26-Feb-20 JPY- INR	65.76	-0.14	-0.22

Advance/ Decline	Adv	Dec	Un Ch.
NSE	367	1424	83
BSE	589	1750	122

FII/DII Capital Mkt*	Buy	Sell	Net
FII	1049	2249	(1200)
DII	4513	4476	37

*NOTE: - FII AND DII data figure is provisional

Market Commentary

The Union Budget disappointed Indian markets on Saturday, as Sensex and Nifty settled with losses of around 2.50% each. Indices made a cautious start of the day, as the Controller General of Accounts' data (CGA) showed that the government's fiscal deficit touched 132.4 per cent of the full-year target at December-end mainly due to slower pace of revenue collections. Weakness remained over the street during the whole trading day, amid the FICCI's Business Confidence Survey Report stating that India Inc is facing huge risks from delays in necessary structural reforms in the factor markets and lack of adequate credit availability to micro, small and medium enterprises (MSMEs).

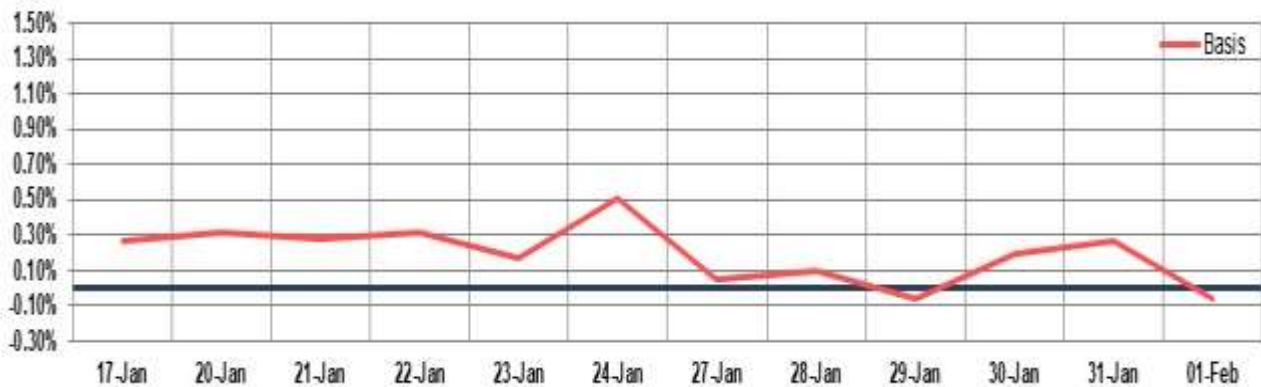
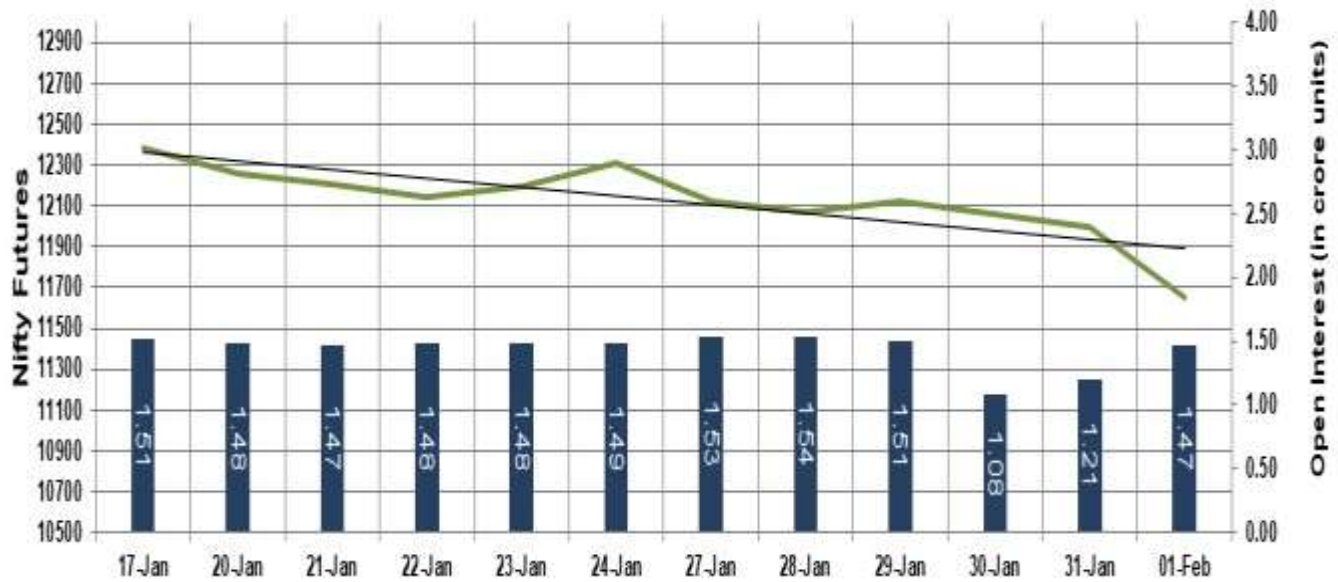
In the second half of the trading session, losses got intensified, after the government in its Union Budget announcements raised fiscal deficit target to 3.8 per cent of the GDP from 3.3 per cent pegged earlier for 2019-20 due to revenue shortage. Adding more worries, the Reserve Bank of India (RBI) said that non-food bank credit growth decelerated to 7.0 per cent in December 2019 from 12.8 per cent in December 2018. Market participants paid no heed towards Finance Minister Nirmala Sitharaman's announcements over cut in personal income tax, extended tax benefits for affordable housing and gave relief to companies on payment of dividend in the Union Budget for 2020-21.

Market Turnover & FII Derivative Data

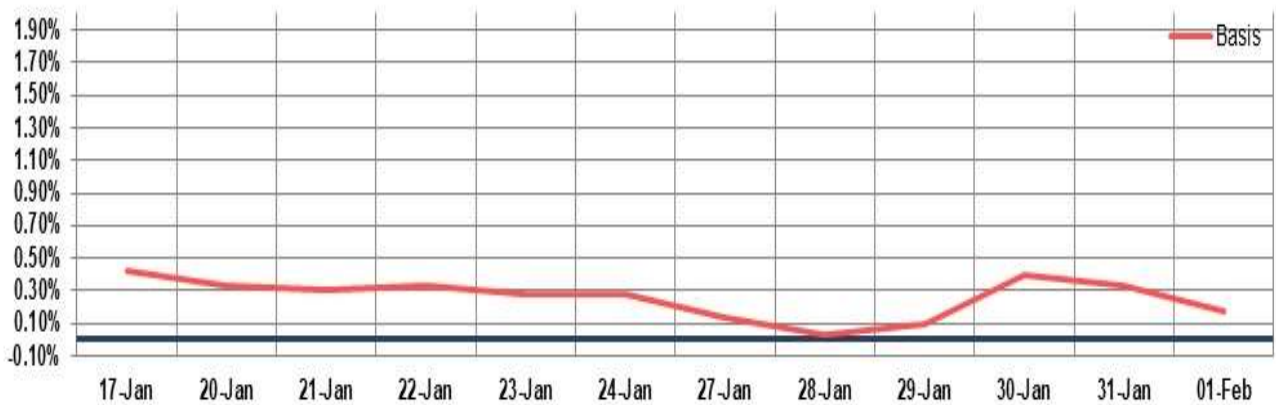
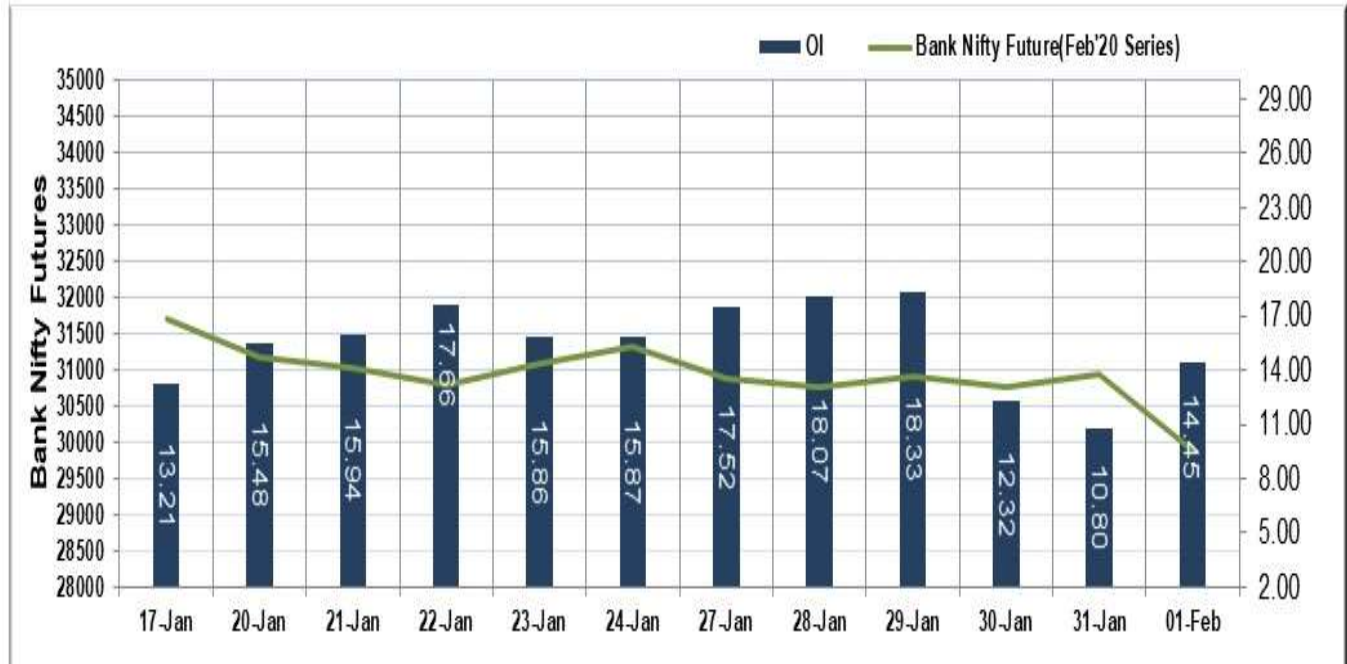
Market TO	Current	Previous	Net%
BSE CASH	2205	1962	12
NSE CASH	37811	43531	(13)
NSE FO	1427192	701181	104

FII Derivatives	Buy	Sell	Net
Ind. Futures	5986.52	7396.27	(1410)
Ind. Options	176210	174436	(1331)
Stk. Futures	21653	21305	(87)
Stk. Options	8845.21	8855.43	(10)

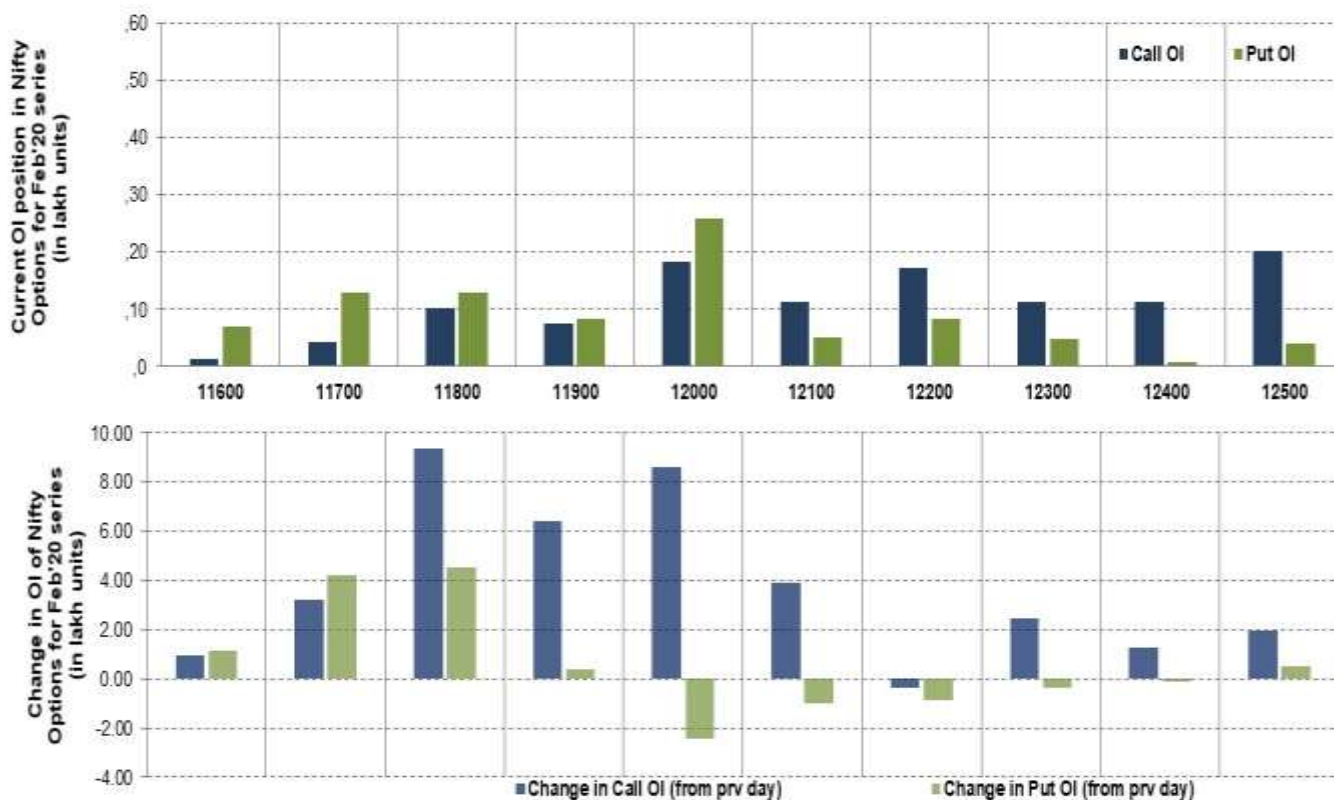
Nifty Futures



Bank Nifty Futures



Nifty Options



Note – Change in OI of Nifty Options refers to change from previous trading day
 Source-NSE, SIHL Derivatives Research (Institutional Equities)

- Among Nifty calls 12,500 SP from the Feb month expiry was the most active call with an addition of 0.20 million in open interest.
- Among Nifty puts, 12,000 SP from the Feb month expiry was the most active put with a reduction of 0.24 million open interests.
- The maximum OI outstanding for Calls was at 12,500 SP (2.03mn) and that for Puts was at 12,000 SP (2.60mn)

Nifty Technical & Indices Levels



Nifty Cash prices have settled at 11661.85 down by 0.61 percent from the previous close. On the upper side it has resistance of 11760 and 11820 levels, while lower side it has support of 11550 and 11500 levels. Intraday traders should be cautious and take position accordingly.

Disclaimer:

The Information provided by SMS or in newsletter or in any document has been prepared by Shah Investor's Home Ltd (SIHL). The Information provided by SMS or in newsletter does not constitute an offer or solicitation for the purchase or sale of any financial instrument or as an official confirmation of any transaction. The information contained herein is from publicly available data or other sources believed to be reliable, but we do not represent that it is accurate or complete and it should not be relied on as such. SIHL or any of its affiliates/ group companies shall not be in any way responsible for any loss or damage that may arise to any person from any inadvertent error in the information contained in this report or SMS. This Information provided by SMS, reports or in newsletter is provided for assistance only and is not intended to be and must not alone be taken as the basis for an investment decision. The user assumes the entire risk of any use made of this information. Each recipient of this Information provided by SMS, report or in newsletter should make such investigation as it deems necessary to arrive at an independent evaluation of an investment in the securities of companies referred to in this information provided by SMS, report or in newsletter (including the merits and risks involved), and should consult his own advisors to determine the merits and risks of such investment. The investment discussed or views expressed may not be suitable for all investors. This information is strictly confidential and is being furnished to you solely for your information.

The information should not be reproduced or redistributed or passed on directly or indirectly in any form to any other person or published, copied, in whole or in part, for any purpose. The information provided by report or SMS is not directed or intended for distribution to, or use by, any person or entity who is a citizen or resident of or located in any locality, state, country or other jurisdiction, where such distribution, publication, availability or use would be contrary to law, regulation or which would subject SIHL and affiliates/ group companies to any registration or licensing requirements within such jurisdiction. The distribution of this Information provided by SMS or in newsletter in certain jurisdictions may be restricted by law, and persons in whose possession this Information provided by SMS or in newsletter comes, should inform themselves about and observe, any such restrictions. The information given or Information provided by SMS, report or in newsletter is as of the date of the issue date of report or the date on which SMS provided and there can be no assurance that future results or events will be consistent with this information. This information is subject to change without any prior notice. SIHL reserves the right to make modifications and alterations to this statement as may be required from time to time. However, SIHL is under no obligation to update or keep the information current.

Nevertheless, SIHL is committed to providing independent and transparent recommendation to its client and would be happy to provide any information in response to specific client queries. Neither SIHL nor any of its affiliates, group companies, directors, employees, agents or representatives shall be liable for any damages whether direct, indirect, special or consequential including lost revenue or lost profits that may arise from or in connection with the use of the information. Past performance is not necessarily a guide to future performance. The disclosures of interest statements incorporated in the Information provided by SMS, report or in newsletter are provided solely to enhance the transparency and should not be treated as endorsement of the views expressed in the report. The analyst for this report certifies that all of the views expressed in this report accurately reflect his or her personal views about the subject company or companies and its or their securities, and no part of his or her compensation was, is or will be, directly or indirectly related to specific recommendations or views expressed in this report.

About Us:

Shah Investor's Home Ltd (SIHL) is an ISO 9001:2008 Certified financial Services Company established in 1994 at Ahmadabad, Gujarat. Customer satisfaction is guaranteed through our diversified product portfolio, professional management and customer first attitude. SIHL was the first broking house in Gujarat with membership in National Securities Depository Ltd (NSDL) and was the first broking name providing services in NSE F&O in Ahmedabad. Today, SIHL ranks among the top most players in Gujarat in retail stock broking area with 45 branches, 350 franchisee across India and providing service to more than 1,25,000 clients.