

-Daily Derivatives & Market Report

CONTENTS

Page No.	Particulars
2	Market Summary
3	Nifty Futures – Derivatives Snap
4	Bank Nifty Futures – Derivatives Snap
5	Activity in Nifty Options
6	What do Nifty Technical suggest
7	Disclaimer

Index Trend Analysis

Pivot(Daily)	Close	S2	S1	Pivot	R1	R2	Daily	Weekly	Monthly
Nifty	12691	12569	12630	12686	12746	12802	Buy	Buy	Buy
Sensex	43357	42926	43142	43343	43558	43759	Buy	Buy	Buy
Nifty Futures	12704	12586	12645	12697	12756	12808	Buy	Buy	Buy
Bank Nifty	28279	27732	28006	28339	28612	28946	Buy	Buy	Neutral
CNX IT	21363	21103	21233	21422	21552	21740	Buy	Buy	Buy
CNX Midcap	18183	18006	18095	18155	18243	18304	Buy	Buy	Neutral
CNX Small Cap	5995	5884	5939	5970	6026	6057	Buy	Buy	Neutral

Market Summary

Domestic Indices	Close	Points	% Chg
SENSEX	43357.19	-236.48	-0.54
NIFTY	12690.80	-58.35	-0.46
MIDCAP	15740.86	77.73	0.50
SMLCAP	15466.31	183.09	1.20
BSEFMC	11536.19	158.04	1.39
AUTO	18702.58	87.38	0.47
POWER	1856.12	6.58	0.36
REALTY	1884.08	15.53	0.83
BSE IT	21579.63	-57.62	-0.27
BANKEX	32435.00	-679.55	-2.05
OILGAS	12876.68	-39.01	-0.30
METAL	9242.78	-22.32	-0.24

Currency Futures	Close	Pre. Pts	% Chg
25-Nov-20 USD-INR	74.70	0.22	0.30
25-Nov-20 EUR-INR	88.22	0.45	0.52
25-Nov-20 GBP-INR	98.43	-0.27	-0.28
25-Nov-20 JPY- INR	70.91	0.28	0.40

Advance/ Decline	Adv	Dec	Un Ch.
NSE	1110	711	124
BSE	1550	1146	190

FII/DII Capital Mkt*	Buy	Sell	Net
DII	3810	6049	(2239)
FII	10143	8629	1514

*NOTE: - FII AND DII data figure is provisional

Market Commentary

Key indices made a negative start of the day, with the RBI's statement that the GDP is likely to contract by 8.6 percent for the July-September period, which means India will enter into a recession for the first time in history in the first half of this fiscal with two successive quarters of negative growth due to the COVID-19 pandemic.

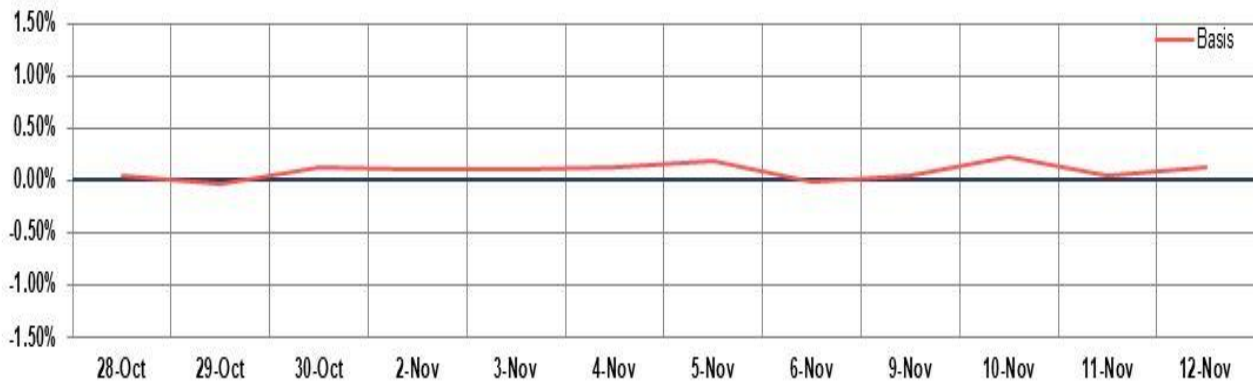
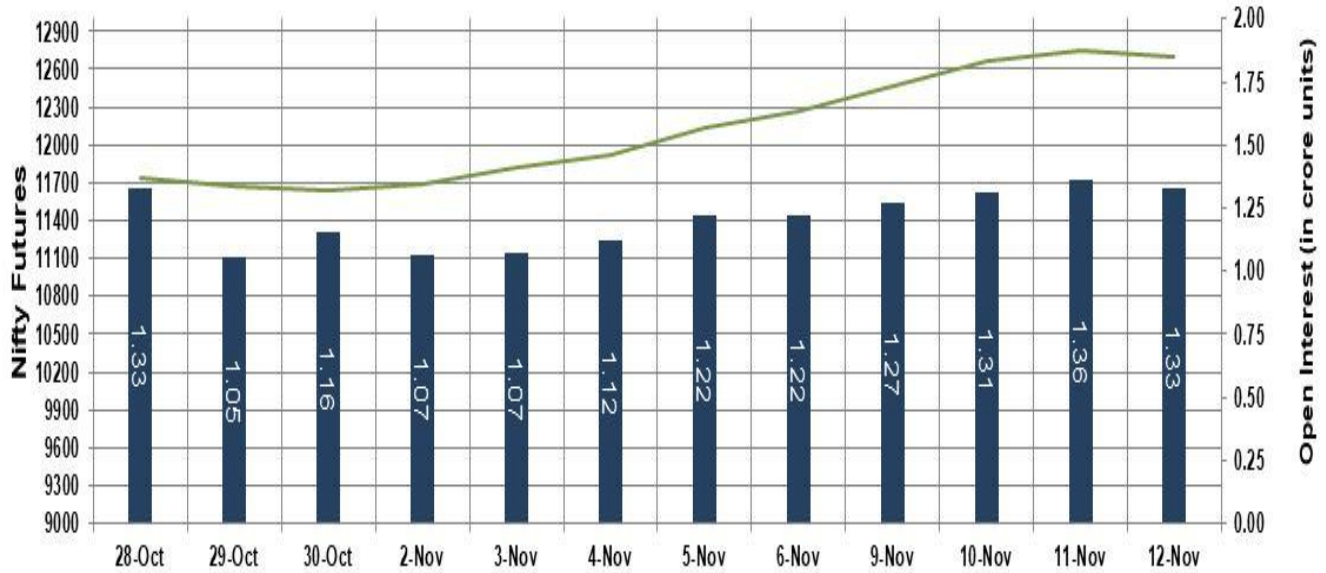
Weak trade continued over the Dalal Street during the whole day, amid rating agency ICRA's report that the aggregate debt of 12 major states is estimated to worsen significantly, and their capital spending might decline sharply because of lower-than-expected GST revenue and shortfall in Centre's devolution. It added that this could lead to a 1-2 per cent contraction in Q4FY21. Sentiments were negative, even after the government said it has set up a 22-member inter-ministerial committee for strengthening India's capital goods sector through interventions that help it in contributing more actively towards achieving the target of a \$5 trillion economy and a \$1 trillion manufacturing sector. The committee will look into issues pertaining to the capital goods sector, including technology development, mother technology development, global value chains, testing, skill training, global standards, reciprocity issues and custom duties to make the sector globally competitive and to become the manufacturing hub for the world.

On the global front, European markets were trading lower. Asian markets ended mostly lower on Thursday, after Japan core machinery orders declined more than expected in September weighing on the prospects of a sustained recovery in business investment. Core machinery orders declined 4.4 percent on a monthly basis, in contrast to a 0.2 percent rise in August. This was the first fall in three months and worse than forecast of 0.7 percent drop. Year-on-year, core machinery orders were down 11.5 percent versus an expected fall of 11.6 percent.

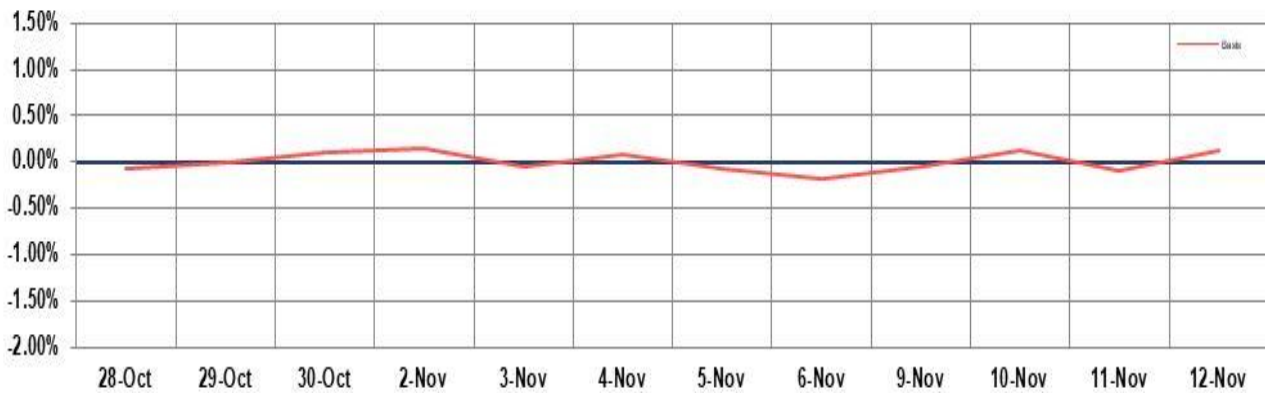
BSE CASH	3108	4287	(28)
NSE CASH	63735	81869	(22)
NSE FO	5531325	3638199	52

FII Derivatives	Buy	Sell	Net
Ind. Futures	3419.59	5073.62	(1654)
Ind. Options	176210	174436	3685
Stk. Futures	21653	21305	(155)
Stk. Options	6809.52	6845.19	(36)

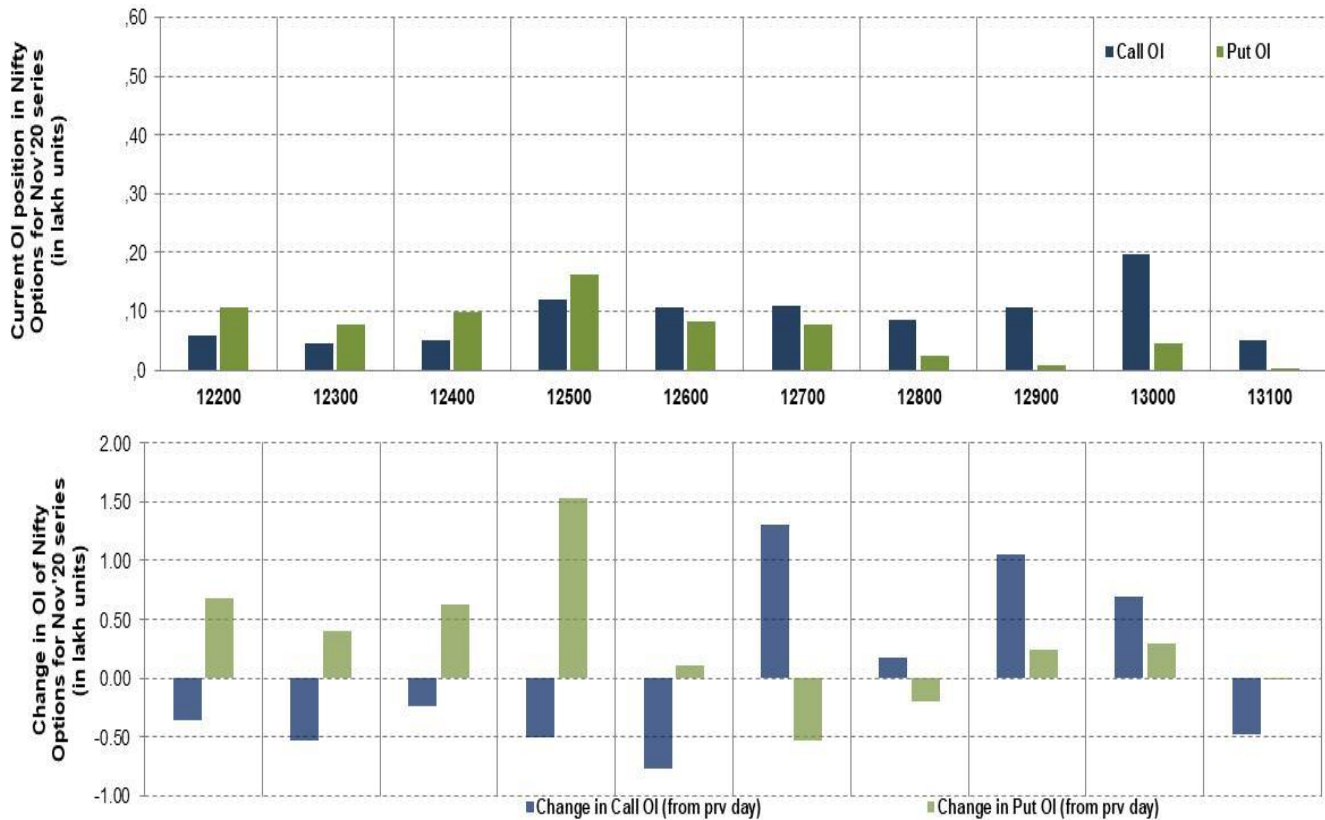
Nifty Futures



Bank Nifty Futures



Nifty Options



Note – Change in OI of Nifty Options refers to change from previous trading day
 Source-NSE, SIHL Derivatives Research (Institutional Equities)

- Among Nifty calls 13,000 SP from the Nov month expiry was the most active call with an addition of 0.07 million in open interests.
- Among Nifty puts 12,500 SP from the Nov month expiry was the most active put with an addition of 0.15 million in open interests.
- The maximum OI outstanding for Calls was at 13,000 SP (1.97mn) and that for Puts was at 12,500 SP (1.63mn)

Nifty Technical & Indices Levels

1-Nifty 50 - 12/11/20
 Avg Avg



Nifty Cash prices have settled at 12690.80 down by 0.46 percent from the previous close. On the upper side it has resistance of 12790 and 12970 levels, while lower side it has support of 12610 and 12490 levels. Intraday traders should be cautious and take position accordingly.

Disclaimer:

The Information provided by SMS or in newsletter or in any document has been prepared by Shah Investor's Home Ltd (SIHL). The Information provided by SMS or in newsletter does not constitute an offer or solicitation for the purchase or sale of any financial instrument or as an official confirmation of any transaction. The information contained herein is from publicly available data or other sources believed to be reliable, but we do not represent that it is accurate or complete and it should not be relied on as such. SIHL or any of its affiliates/ group companies shall not be in any way responsible for any loss or damage that may arise to any person from any inadvertent error in the information contained in this report or SMS. This Information provided by SMS, reports or in newsletter is provided for assistance only and is not intended to be and must not alone be taken as the basis for an investment decision. The user assumes the entire risk of any use made of this information. Each recipient of this Information provided by SMS, report or in newsletter should make such investigation as it deems necessary to arrive at an independent evaluation of an investment in the securities of companies referred to in this information provided by SMS, report or in newsletter (including the merits and risks involved), and should consult his own advisors to determine the merits and risks of such investment. The investment discussed or views expressed may not be suitable for all investors. This information is strictly confidential and is being furnished to you solely for your information.

The information should not be reproduced or redistributed or passed on directly or indirectly in any form to any other person or published, copied, in whole or in part, for any purpose. The information provided by report or SMS is not directed or intended for distribution to, or use by, any person or entity who is a citizen or resident of or located in any locality, state, country or other jurisdiction, where such distribution, publication, availability or use would be contrary to law, regulation or which would subject SIHL and affiliates/ group companies to any registration or licensing requirements within such jurisdiction. The distribution of this Information provided by SMS or in newsletter in certain jurisdictions may be restricted by law, and persons in whose possession this Information provided by SMS or in newsletter comes, should inform themselves about and observe, any such restrictions. The information given or Information provided by SMS, report or in newsletter is as of the date of the issue date of report or the date on which SMS provided and there can be no assurance that future results or events will be consistent with this information. This information is subject to change without any prior notice. SIHL reserves the right to make modifications and alterations to this statement as may be required from time to time. However, SIHL is under no obligation to update or keep the information current.

Nevertheless, SIHL is committed to providing independent and transparent recommendation to its client and would be happy to provide any information in response to specific client queries. Neither SIHL nor any of its affiliates, group companies, directors, employees, agents or representatives shall be liable for any damages whether direct, indirect, special or consequential including lost revenue or lost profits that may arise from or in connection with the use of the information. Past performance is not necessarily a guide to future performance. The disclosures of interest statements incorporated in the Information provided by SMS, report or in newsletter are provided solely to enhance the transparency and should not be treated as endorsement of the views expressed in the report. The analyst for this report certifies that all of the views expressed in this report accurately reflect his or her personal views about the subject company or companies and its or their securities, and no part of his or her compensation was, is or will be, directly or indirectly related to specific recommendations or views expressed in this report.

About Us:

Shah Investor's Home Ltd (SIHL) is an ISO 9001:2008 Certified financial Services Company established in 1994 at Ahmedabad, Gujarat. Customer satisfaction is guaranteed through our diversified product portfolio, professional management and customer first attitude. SIHL was the first broking house in Gujarat with membership in National Securities Depository Ltd (NSDL) and was the first broking name providing services in NSE F&O in Ahmedabad. Today, SIHL ranks among the top most players in Gujarat in retail stock broking area with 45 branches, 350 franchisee across India and providing service to more than 1,25,000 clients.