

# Morning Mantra

MARKET PREVIEW FROM SHAH INVESTOR'S HOME LIMITED'S VIEW

ISO 9001 : 2015 Certified



## Table of Contents

Page No.	Particulars
1	Market Commentary
2	Market Summary and Numbers that matter
3	G-Sec Yields, Currency Futures, Dollar Index, Key Commodities Tracker & Index Trend Analysis
4	Nifty Technical
5	Nifty Futures
6	Bank Nifty Futures
7	Nifty Options
8	Disclaimer

## MARKET COMMENTARY

Indian equity benchmarks ended last trading day of the financial year 2020-21 (FY21) on a lower note with sharp losses on Wednesday's trading session. Key indices made a negative start of the day, amid rising coronavirus cases in the country. India has recorded 53,158 cases recorded in the last 24 hours. With the latest addition, the country's tally has soared to 12,148,487, Worldometer showed this morning. With active cases hitting 553,933, India is now the 6th-worst hit country. The death toll from the deadly infection jumped to 162,502.

Traders were cautious, as India's economy has bounced back amazingly from the COVID-19 pandemic and nationwide lockdown over the last one year, but it is not out of the woods yet, according to the World Bank, which in its latest report has predicted that the country's real GDP growth for fiscal year 21/22 could range from 7.5 to 12.5 per cent. The Washington-based global lender, in its latest South Asia Economic Focus report released ahead of the annual Spring meeting of the World Bank and the International Monetary Fund (IMF), said that the economy was already slowing when the COVID-19 pandemic unfolded.

In the last hour of the trading session, markets added more losses to end near their intraday low points. Domestic sentiments remained down-beat as Moody's Analytics stated that India's inflation is at uncomfortably high level, which is an exception among Asian economies. It said higher fuel prices will keep upward pressure on retail inflation and keep the RBI from offering further rate cuts. Retail inflation rose to 5 per cent in February, from 4.1 per cent in January.

On the global front, European markets were trading lower with bond yields back in focus as investors wait for President Joe Biden's infrastructure plan. Germany's suspension of the AstraZeneca vaccine was also in focus. Asian markets finished in red on Wednesday, even after the manufacturing sector in China continued to expand in March, and at a faster rate, the National Bureau of Statistics said on Wednesday with a manufacturing PMI score of 51.9. That beat expectations for 51.0 and was up from 50.6 in February, moving further above the boom-or-bust line of 50 that separates expansion from contraction.

## MARKET SUMMARY

Domestic Indices	Close	Points	% Change
SENSEX	49509.15	-627.43	-1.25
NIFTY	14690.70	-154.40	-1.04
MIDCAP	20181.31	14.20	0.07
SMLCAP	20649.33	105.94	0.52
-BSEFMC	12875.40	134.58	1.06
AUTO	22252.21	-1.14	-0.01
POWER	2475.13	-33.75	-1.35
REALTY	2670.31	49.51	1.89
BSE IT	26543.24	-194.85	-0.73
BANKEX	37547.91	-545.38	-1.43
OIL GAS	14820.46	-21.08	-0.14
METAL	14350.61	59.02	0.41
INDIA VIX	20.64	-0.01	-0.02

## ADVANCE-DECLINE

Index	Advance	Decline	Unchanged
NSE	923	1006	80
BSE	1373	1513	193

## MARKET TURNOVER (₹ in Crs)

Segment	Current	Previous	Net %
BSE CASH	3411	3781	(10)
NSE CASH	56887	68904	(17)
NSE F&O	3537749	2797459	26

## KEY INDICES RATIOS

INDEX	P/E	P/B	Dividend Yield
NIFTY	40.43	4.21	1.07
SENSEX	34.36	3.33	0.73

## FII & DII - CAPITAL MARKETS (₹ in Crs)

FII-DII*	Buy	Sell	Net
DII	6161	4079	2082
FII	7658	9344	(1686)

Note: FII & DII Figures are provisional

## FII DERIVATIVES (₹ in Crs)

FII	Buy	Sell	Net
Index Futures	3377.43	5826.23	(2449)
Index Options	348209	345686	2523
Stock Futures	12120	12756	(636)
Stock Options	7023.64	7054.84	(31)

## PUT-CALL RATIO

Index	Current	Previous
NIFTY	1.09	1.32
BANK NIFTY	0.79	0.95

## SECURITIES BAN FOR TRADE IN F&O FOR 01-04-2021

SAIL
------

## 10-YEAR GOVERNMENT SECURITIES YIELD

Country	Current	Previous	% Chg
INDIA	6.177	6.143	0.43
USA	1.721	1.726	-0.30

## DOLLAR INDEX

Dollar Index	Current	Previous	% Chg
DXY	93.22	93.232	-0.01

## CURRENCY FUTURES

Expiry	Close	Chg Point	% Chg
28-Apr -21 USD-INR	73.44	-0.42	-0.57
28-Apr -21 EUR-INR	86.25	-0.47	-0.54
28-Apr -21 GBP-INR	101.13	-0.41	-0.41
28-Apr -21 JPY- INR	66.44	-0.56	-0.84

## KEY COMMODITIES TRACKER

Commodity	Current	Chg Point	% Chg
Gold	1713.35	5.94	0.35
Silver	24.35	-0.07	-0.30
Crude-Oil	59.38	0.22	0.37
Brent-Crude	62.94	0.20	0.32

## INDEX TREND ANALYSIS

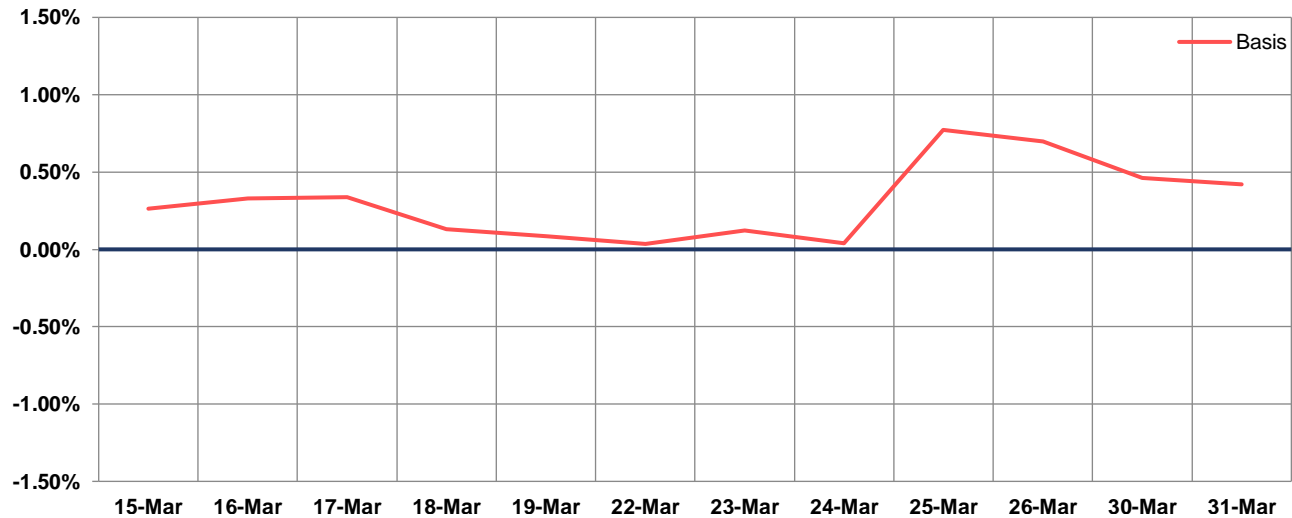
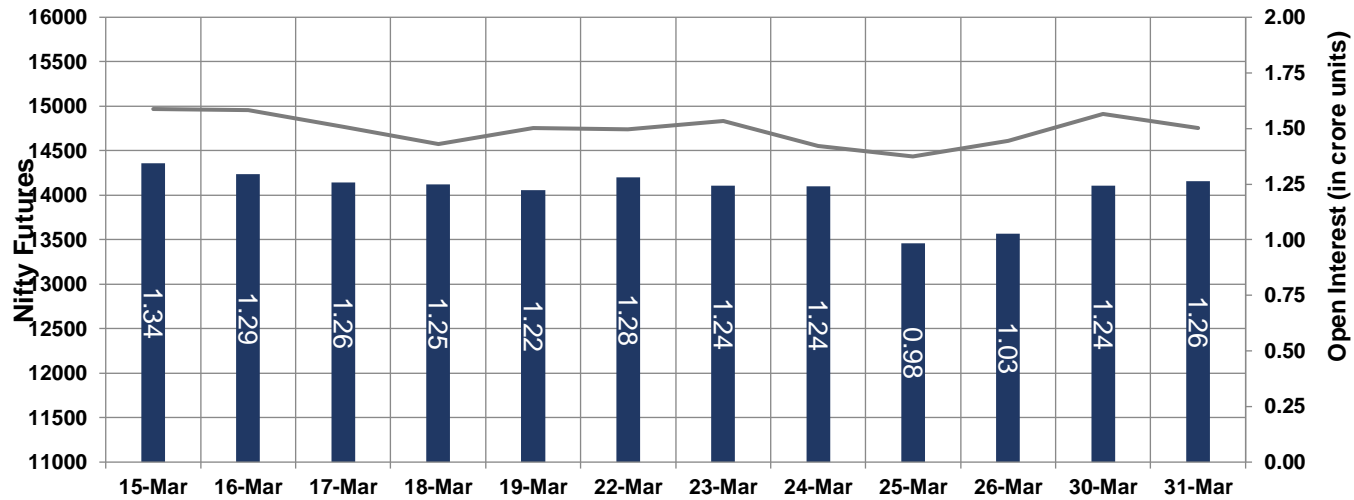
INDEX	CLOSE	S2	S1	PIVOT	R1	R2	DAILY	WEEKLY	MONTHLY
NIFTY	14691	14553	14622	14739	14808	14926	Neutral	Neutral	Buy
SENSEX	49509	49060	49284	49667	49892	50275	Neutral	Neutral	Buy
NIFTY FUTURES	14765	14632	14699	14787	14854	14943	Neutral	Neutral	Buy
BANK NIFTY	33304	32788	33046	33410	33667	34031	Sell	Neutral	Buy
CNX IT	25855	25582	25718	25925	26061	26267	Buy	Neutral	Buy
CNX MIDCAP	23693	23437	23565	23649	23777	23860	Buy	Neutral	Buy
CNX SMALLCAP	8113	8057	8085	8116	8144	8174	Neutral	Neutral	Buy
INDIA VIX	20.64	19.66	20.15	20.49	20.98	21.32	Sell	Sell	Buy

## NIFTY TECHNICAL & INDICES LEVEL

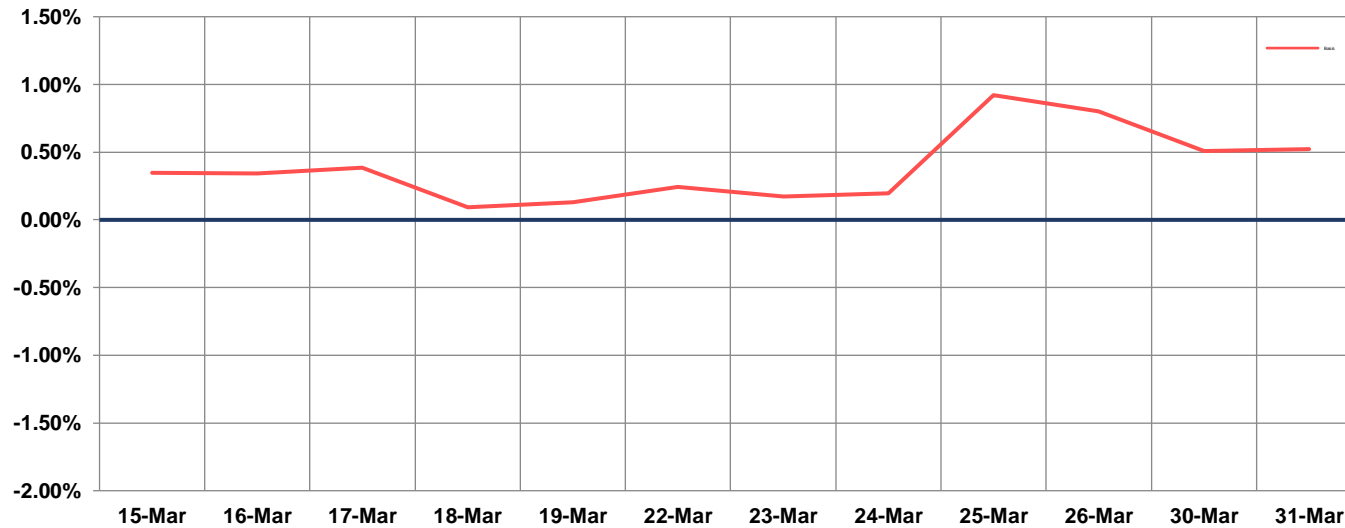
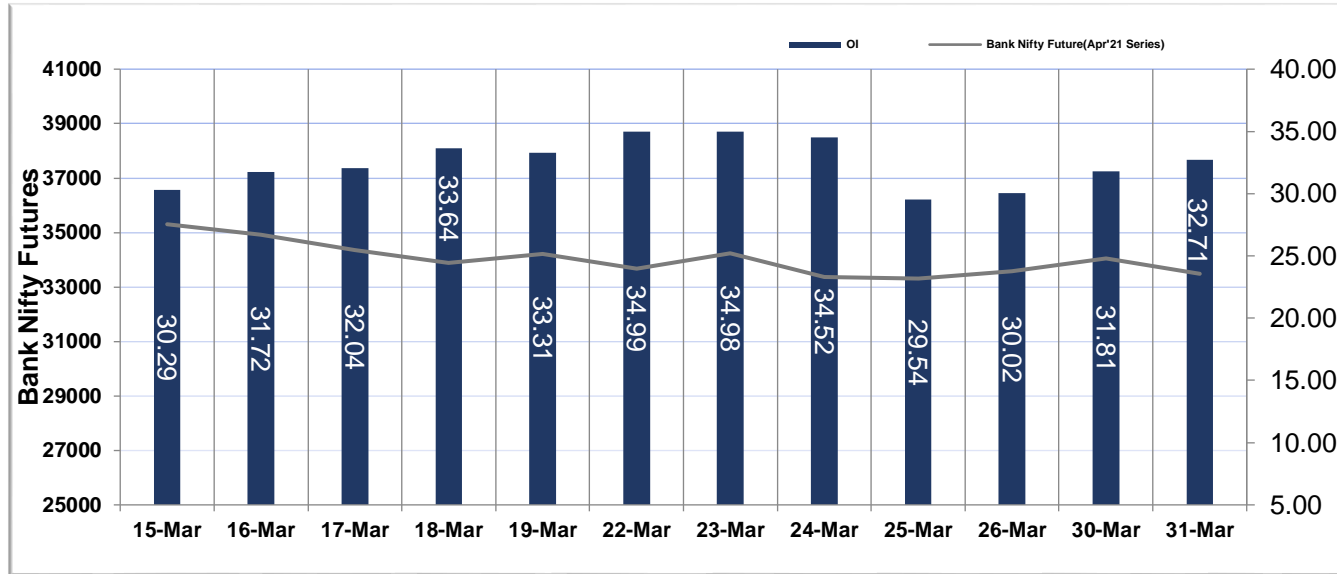


- Nifty Cash prices have settled at **14690.70** down by 1.04 percent from the previous close. On the upper side it has resistance of **14820** and **14970** levels, while lower side it has support of **14550** and **14370** levels. Intraday traders should be cautious and take position accordingly.

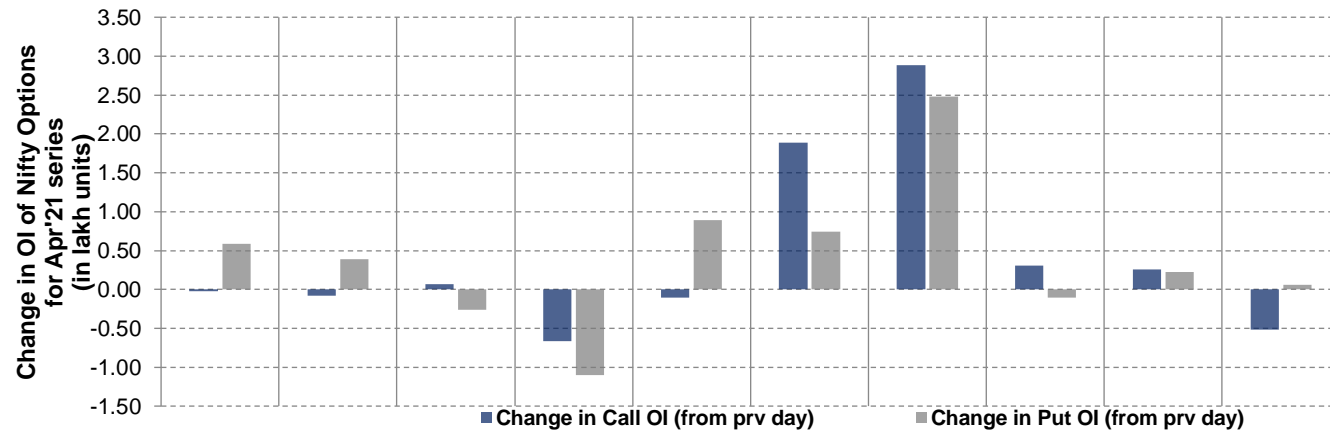
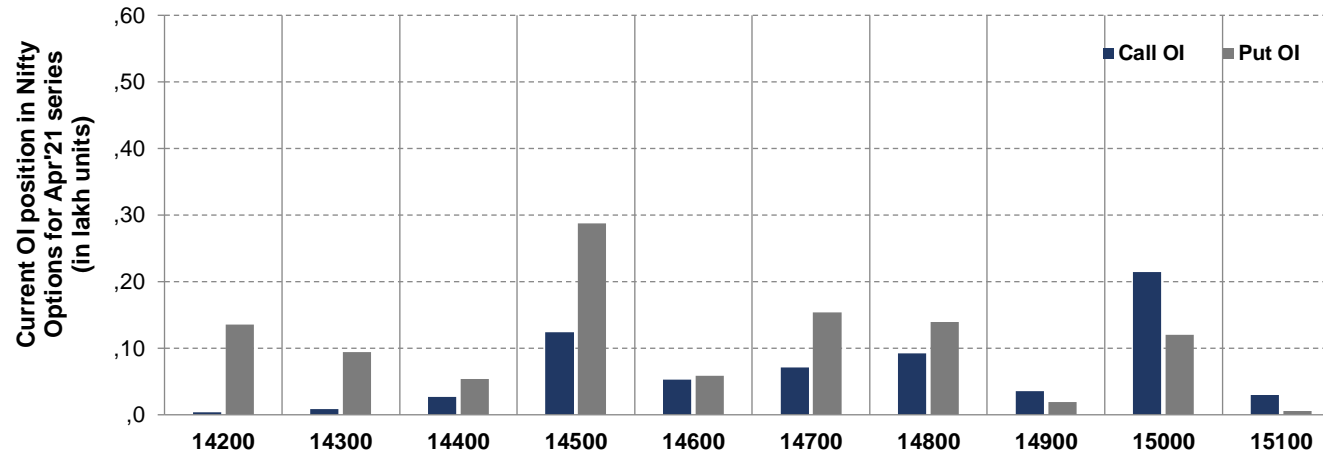
## NIFTY FUTURES



## BANK NIFTY FUTURES



## NIFTY OPTIONS



- Among Nifty calls 15,000 SP from the April month expiry was the most active call with an addition of 0.03 million in open interests.
- Among Nifty puts 14,500 SP from the April month expiry was the most active put with a reduction of 0.11 million in open interests.
- The maximum OI outstanding for Calls was at 15,000 SP (2.15mn) and that for Puts was at 14,500 SP (2.90mn)



## Disclaimer:

The Information provided by SMS or in newsletter or in any document has been prepared by Shah Investor's Home Ltd (SIHL). The Information provided by SMS or in newsletter does not constitute an offer or solicitation for the purchase or sale of any financial instrument or as an official confirmation of any transaction. The information contained herein is from publicly available data or other sources believed to be reliable, but we do not represent that it is accurate or complete and it should not be relied on as such. SIHL or any of its affiliates/ group companies shall not be in any way responsible for any loss or damage that may arise to any person from any error in the information contained in this report or SMS. This Information provided by SMS, reports or in newsletter is provided for assistance only and is not intended to be and must not alone be taken as the basis for an investment decision. The user assumes the entire risk of any use made of this information. Each recipient of this Information provided by SMS, report or in newsletter should make such investigation as it deems necessary to arrive at an independent evaluation of an investment in the securities of companies referred to in this information provided by SMS, report or in newsletter (including the merits and risks involved), and should consult his own advisors to determine the merits and risks of such investment. The investment discussed or views expressed may not be suitable for all investors. This information is strictly confidential and is being furnished to you solely for your information.

The information should not be reproduced or redistributed or passed on directly or indirectly in any form to any other person or published, copied, in whole or in part, for any purpose. The information provided by report or SMS is not directed or intended for distribution to, or use by, any person or entity who is a citizen or resident of or located in any locality, state, country or other jurisdiction, where such distribution, publication, availability or use would be contrary to law, regulation or which would subject SIHL and affiliates/ group companies to any registration or licensing requirements within such jurisdiction. The distribution of this Information provided by SMS or in newsletter in certain jurisdictions may be restricted by law, and persons in whose possession this Information provided by SMS or in newsletter comes, should inform themselves about and observe, any such restrictions. The information given or Information provided by SMS, report or in newsletter is as of the date of the issue date of report or the date on which SMS provided and there can be no assurance that future results or events will be consistent with this information. This information is subject to change without any prior notice. SIHL reserves the right to make modifications and alterations to this statement as may be required from time to time. However, SIHL is under no obligation to update or keep the information current.

Nevertheless, SIHL is committed to providing independent and transparent recommendation to its client and would be happy to provide any information in response to specific client queries. Neither SIHL nor any of its affiliates, group companies, directors, employees, agents or representatives shall be liable for any damages whether direct, indirect, special or consequential including lost revenue or lost profits that may arise from or in connection with the use of the information. Past performance is not necessarily a guide to future performance. The disclosures of interest statements incorporated in the Information provided by SMS, report or in newsletter are provided solely to enhance the transparency and should not be treated as endorsement of the views expressed in the report. The analyst for this report certifies that all of the views expressed in this report accurately reflect his or her personal views about the subject company or companies and its or their securities, and no part of his or her compensation was, is or will be, directly or indirectly related to specific recommendations or views expressed in this report.

## About Us:

Shah Investor's Home Ltd (SIHL) is an ISO 9001:2015 Certified financial Services Company established in 1994 at Ahmadabad, Gujarat. Customer satisfaction is guaranteed through our diversified product portfolio, professional management and customer first attitude. SIHL was the first broking house in Gujarat with membership in National Securities Depository Ltd (NSDL) and was the first broking name providing services in NSE F&O in Ahmedabad. Today, SIHL ranks among the top most players in Gujarat in retail stock broking area with 45 branches, 350 franchisee across India and providing service to more than 1,25,000 clients.