

Morning Mantra

MARKET PREVIEW FROM SHAH INVESTOR'S HOME LIMITED'S VIEW

ISO 9001 : 2015 Certified



Table of Contents

Page No.	Particulars
1	Market Commentary
2	Market Summary and Numbers that matter
3	G-Sec Yields, Currency Futures, Dollar Index, Key Commodities Tracker & Index Trend Analysis
4	Nifty Technical
5	Nifty Futures
6	Bank Nifty Futures
7	Nifty Options
8	Disclaimer

MARKET COMMENTARY

Indian equity benchmarks ended flat on Tuesday's trading session. After a strong start, indices remained higher for the most part of the session, as fall in fresh coronavirus cases in the country aided the sentiments in the markets. India continued to record steady decline in the number of fresh coronavirus cases with the daily toll slipping below the 200,000-mark. India's fresh Covid cases stood at 1.95 lakh. It is the lowest level of cases in the last 41 days. Adding more optimism, the commerce and industry ministry said that foreign direct investment (FDI) equity inflow into the country grew 19 per cent to \$59.64 billion during 2020-21 on account of measures taken by the government on the fronts of policy reforms, investment facilitation and ease of doing business.

In the last hours of the trade, markets turned negative and finally ended near neutral lines, after a British brokerage cut India's FY22 GDP growth estimate by a sharp 0.80 per cent to 9.2 per cent, saying the economic impact of the second wave of infections has been deeper than initially expected. Traders took note of report that a Reserve Bank of India (RBI) study has advocated a mix of fiscal and monetary policies to mitigate economic downturn, saying demand side channel needs to be complemented with a conducive monetary transmission mechanism from the supply side. Meanwhile, domestic ratings agency Icria forecast a 2 per cent GDP growth in the fourth quarter of 2020-21, and a 7.3 per cent contraction for the full fiscal year.

On the global front, European markets were trading higher as a billion-dollar deal combining two of Germany's biggest property developers and a rally in technology shares after soothing comments on inflation lifted investor sentiment. Asian markets ended higher on Tuesday, after Singapore's gross domestic product expanded 1.3 percent on year in the first three months of 2021. The Ministry of Trade and Industry said that exceeded expectations for an increase of 0.9 percent following the 2.4 percent contraction in the fourth quarter of 2020. On a seasonally adjusted quarterly basis, GDP rose 3.1 percent after climbing 3.8 percent in the three months prior.

MARKET SUMMARY

Domestic Indices	Close	Points	% Change
SENSEX	50637.53	-14.37	-0.03
NIFTY	15208.45	10.75	0.07
MIDCAP	21602.00	-67.64	-0.31
SMLCAP	23351.87	60.00	0.26
BSEFMC	12971.52	65.13	0.50
AUTO	23310.13	127.85	0.55
POWER	2853.45	-25.22	-0.88
REALTY	2598.40	10.12	0.39
BSE IT	26978.27	260.99	0.98
BANKEX	39348.83	-277.74	-0.70
OIL GAS	16149.04	74.60	0.46
METAL	18692.28	161.55	0.87
INDIA VIX	18.84	-0.29	-1.50

ADVANCE-DECLINE

Index	Advance	Decline	Unchanged
NSE	1025	950	68
BSE	1736	1403	142

MARKET TURNOVER (₹ in Crs)

Segment	Current	Previous	Net %
BSE CASH	5237	5503	(5)
NSE CASH	73644	78227	(6)
NSE F&O	3806123	3528909	8

KEY INDICES RATIOS

INDEX	P/E	P/B	Dividend Yield
NIFTY	29.25	4.35	1.00
SENSEX	31.56	3.23	0.87

FII & DII - CAPITAL MARKETS (₹ in Crs)

FII-DII*	Buy	Sell	Net
DII	4300	4863	(564)
FII	7283	6323	960

Note: FII & DII Figures are provisional

FII DERIVATIVES (₹ in Crs)

FII	Buy	Sell	Net
Index Futures	7165.26	5688.76	1477
Index Options	374417.54	372231.84	2186
Stock Futures	43780.82	45740.75	(1960)
Stock Options	18095.32	18447.37	(352)

PUT-CALL RATIO

Index	Current	Previous
NIFTY	1.22	1.30
BANK NIFTY	0.75	0.91

SECURITIES BAN FOR TRADE IN F&O FOR 26-05-2021

AMARAJABAT
CANBK
PNB

10-YEAR GOVERNMENT SECURITIES YIELD

Country	Current	Previous	% Chg
INDIA	5.972	5.977	-0.08
USA	1.577	1.608	-1.90

DOLLAR INDEX

Dollar Index	Current	Previous	% Chg
DXY	89.68	89.84	-0.18

CURRENCY FUTURES

Expiry	Close	Chg Point	% Chg
27 May-21 USD-INR	72.83	-0.14	-0.19
27 May-21 EUR-INR	89.23	0.14	0.16
27 May-21 GBP-INR	103.13	0.01	0.01
27 May-21 JPY- INR	66.88	-0.14	-0.21

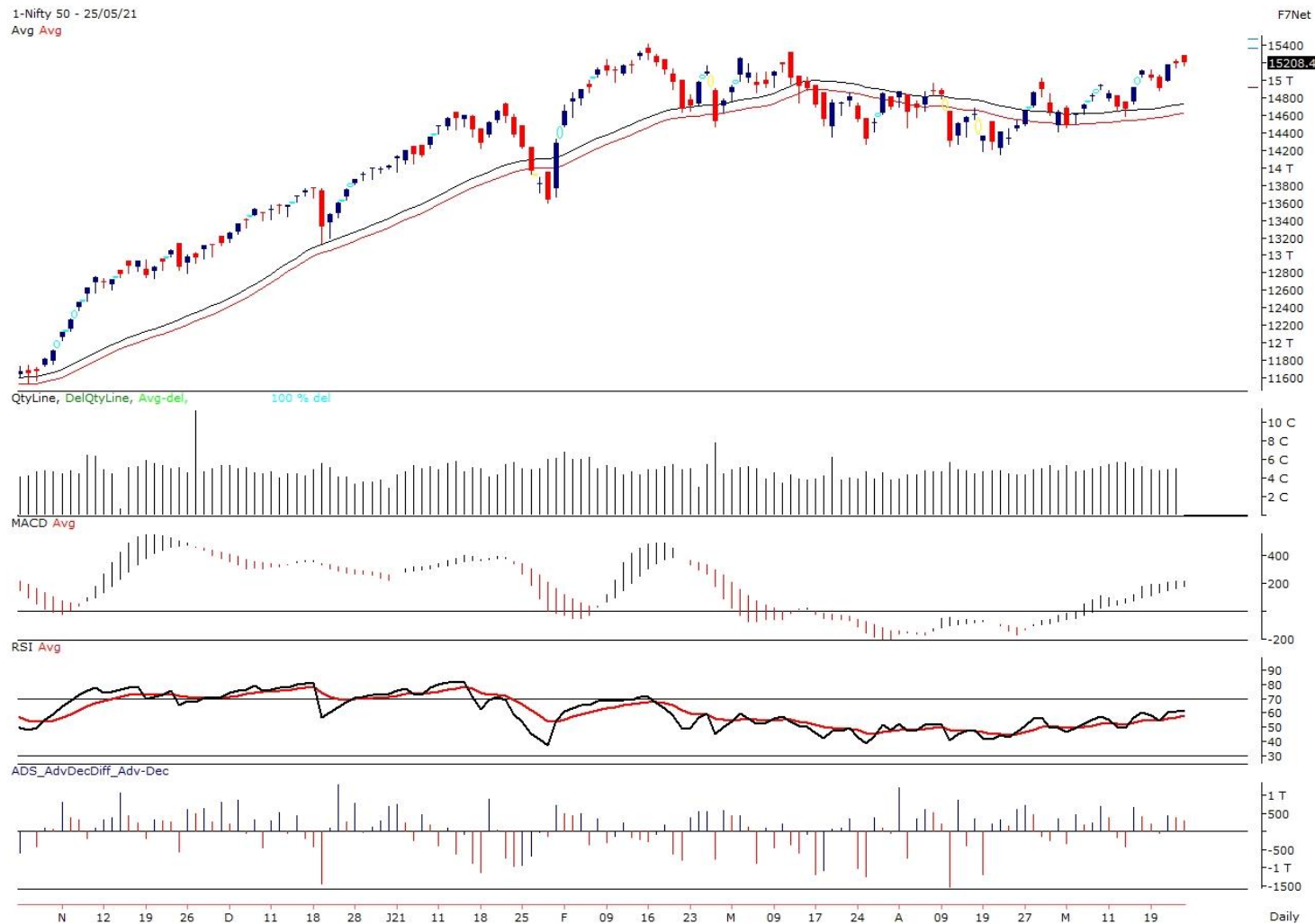
KEY COMMODITIES TRACKER

Commodity	Current	Chg Point	% Chg
Gold	1890.40	13.03	0.69
Silver	27.89	0.21	0.79
Crude-Oil	66.28	0.23	0.35
Brent-Crude	68.70	0.24	0.31

INDEX TREND ANALYSIS

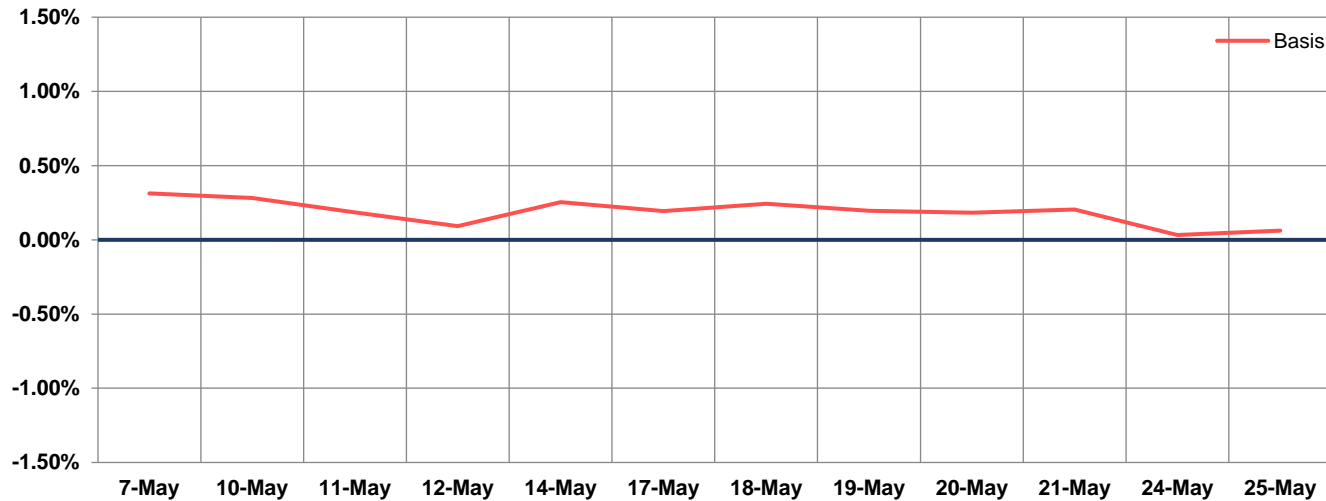
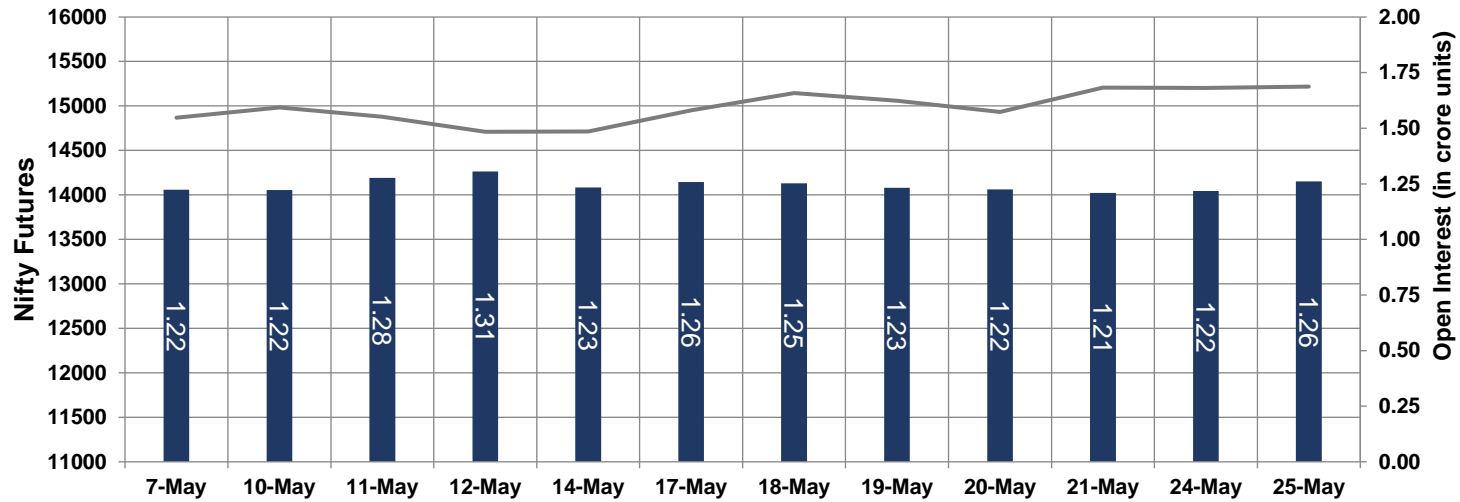
INDEX	CLOSE	S2	S1	PIVOT	R1	R2	DAILY	WEEKLY	MONTHLY
NIFTY	15208	15091	15150	15222	15280	15352	Buy	Buy	Buy
SENSEX	50638	50204	50421	50691	50908	51178	Buy	Buy	Buy
NIFTY FUTURES	15233	15091	15162	15231	15302	15370	Buy	Buy	Buy
BANK NIFTY	34662	34017	34340	34733	35055	35448	Buy	Buy	Buy
CNX IT	26394	26086	26240	26395	26549	26705	Buy	Buy	Buy
CNX MIDCAP	25544	25283	25414	25598	25729	25913	Buy	Buy	Buy
CNX SMALLCAP	9172	9088	9130	9199	9241	9311	Buy	Buy	Buy
INDIA VIX	18.84	15.83	17.34	19.19	20.70	22.56	Sell	Sell	Neutral

NIFTY TECHNICAL & INDICES LEVEL

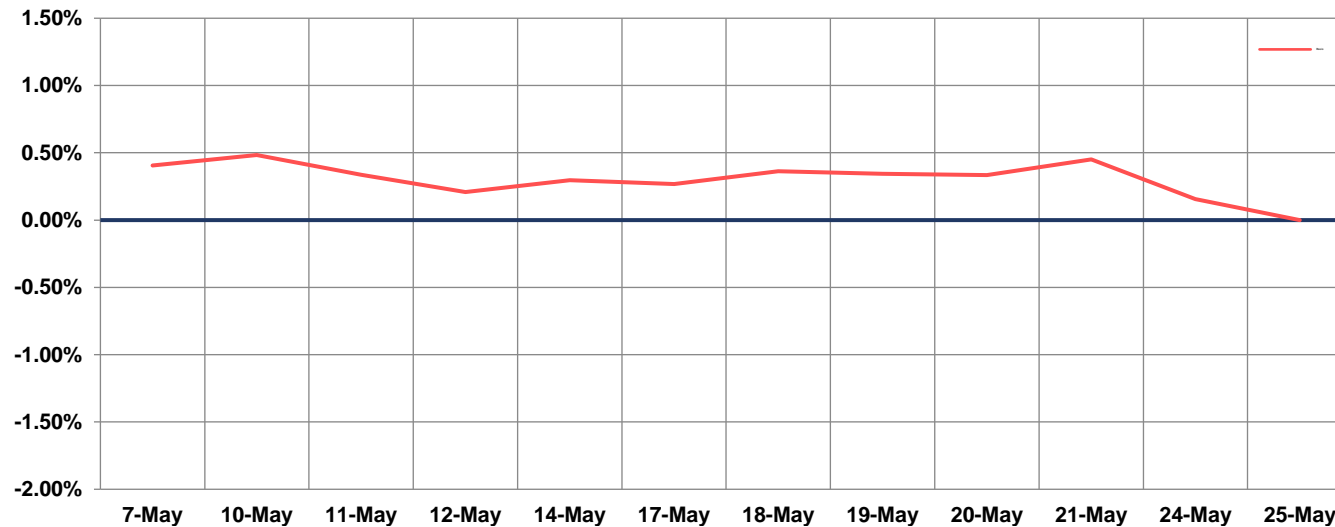
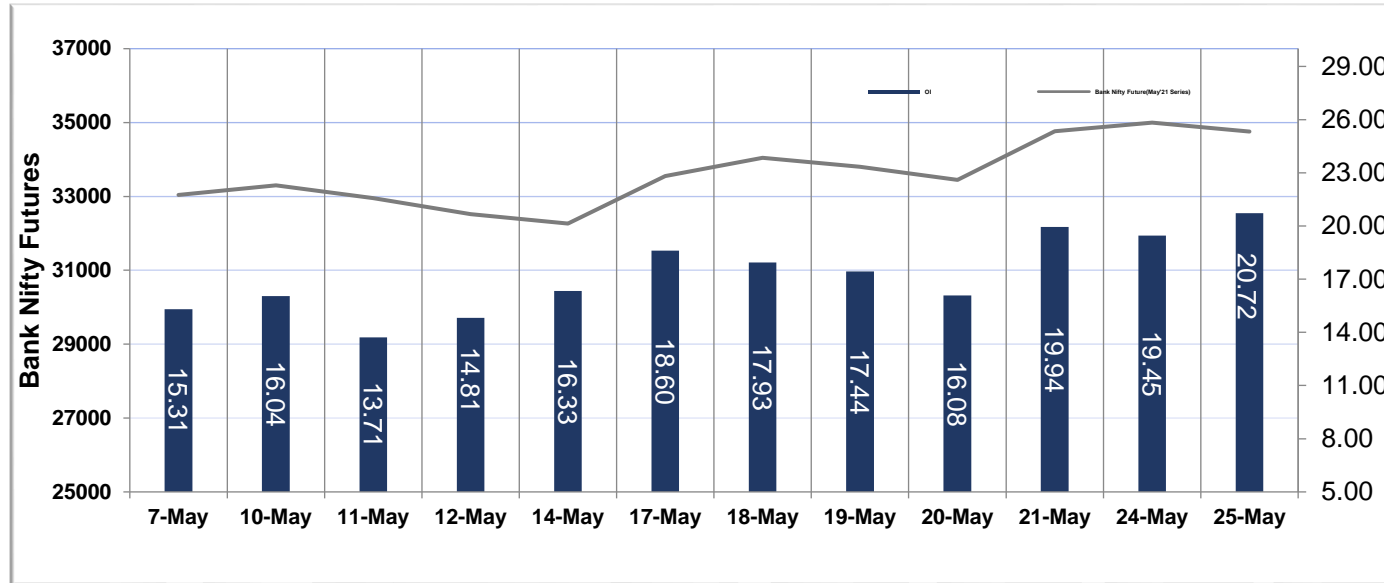


- Nifty Cash prices have settled at **15208.45** up by 0.07 percent from the previous close. On the upper side it has resistance of **15260** and **15380** levels, while lower side it has support of **15040** and **14990** levels. Intraday traders should be cautious and take position accordingly.

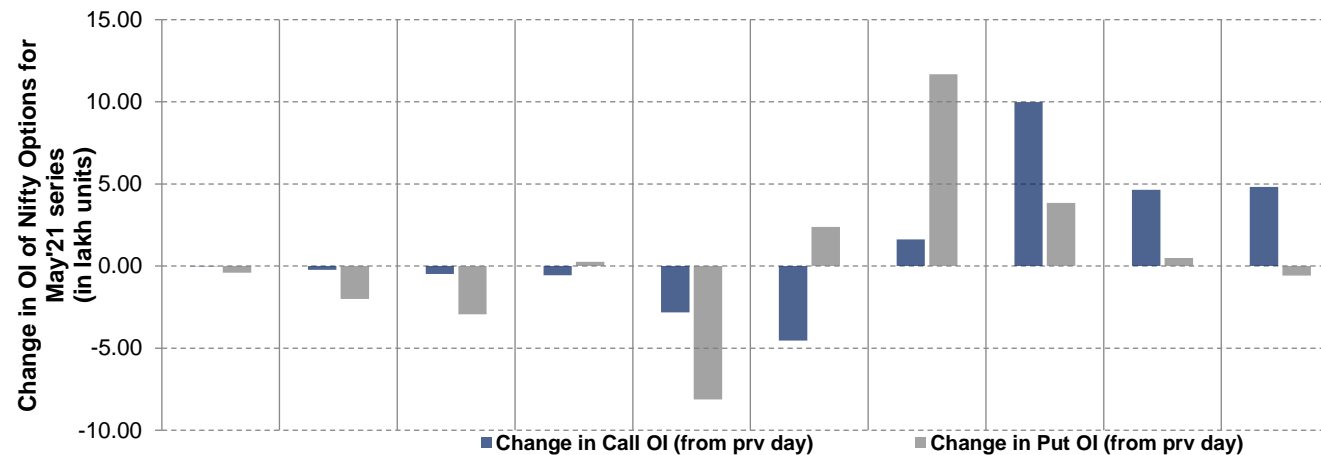
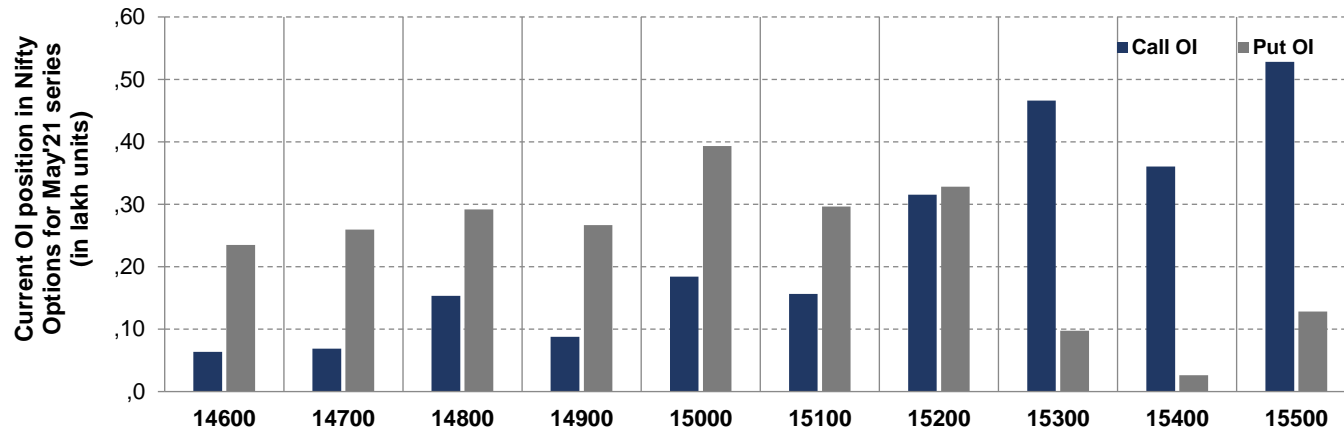
NIFTY FUTURES



BANK NIFTY FUTURES



NIFTY OPTIONS



- Among Nifty calls 15,500 SP from the May month expiry was the most active call with an addition of 0.50 million in open interests.
- Among Nifty puts 15,000 SP from the May month expiry was the most active put with a reduction of 0.81 million in open interests.
- The maximum OI outstanding for Calls was at 15,500 SP (5.30mn) and that for Puts was at 15,000 SP (4.00mn)

Disclaimer:

The Information provided by SMS or in newsletter or in any document has been prepared by Shah Investor's Home Ltd (SIHL). The Information provided by SMS or in newsletter does not constitute an offer or solicitation for the purchase or sale of any financial instrument or as an official confirmation of any transaction. The information contained herein is from publicly available data or other sources believed to be reliable, but we do not represent that it is accurate or complete and it should not be relied on as such. SIHL or any of its affiliates/ group companies shall not be in any way responsible for any loss or damage that may arise to any person from any error in the information contained in this report or SMS. This Information provided by SMS, reports or in newsletter is provided for assistance only and is not intended to be and must not alone be taken as the basis for an investment decision. The user assumes the entire risk of any use made of this information. Each recipient of this Information provided by SMS, report or in newsletter should make such investigation as it deems necessary to arrive at an independent evaluation of an investment in the securities of companies referred to in this information provided by SMS, report or in newsletter (including the merits and risks involved), and should consult his own advisors to determine the merits and risks of such investment. The investment discussed or views expressed may not be suitable for all investors. This information is strictly confidential and is being furnished to you solely for your information.

The information should not be reproduced or redistributed or passed on directly or indirectly in any form to any other person or published, copied, in whole or in part, for any purpose. The information provided by report or SMS is not directed or intended for distribution to, or use by, any person or entity who is a citizen or resident of or located in any locality, state, country or other jurisdiction, where such distribution, publication, availability or use would be contrary to law, regulation or which would subject SIHL and affiliates/ group companies to any registration or licensing requirements within such jurisdiction. The distribution of this Information provided by SMS or in newsletter in certain jurisdictions may be restricted by law, and persons in whose possession this Information provided by SMS or in newsletter comes, should inform themselves about and observe, any such restrictions. The information given or Information provided by SMS, report or in newsletter is as of the date of the issue date of report or the date on which SMS provided and there can be no assurance that future results or events will be consistent with this information. This information is subject to change without any prior notice. SIHL reserves the right to make modifications and alterations to this statement as may be required from time to time. However, SIHL is under no obligation to update or keep the information current.

Nevertheless, SIHL is committed to providing independent and transparent recommendation to its client and would be happy to provide any information in response to specific client queries. Neither SIHL nor any of its affiliates, group companies, directors, employees, agents or representatives shall be liable for any damages whether direct, indirect, special or consequential including lost revenue or lost profits that may arise from or in connection with the use of the information. Past performance is not necessarily a guide to future performance. The disclosures of interest statements incorporated in the Information provided by SMS, report or in newsletter are provided solely to enhance the transparency and should not be treated as endorsement of the views expressed in the report. The analyst for this report certifies that all of the views expressed in this report accurately reflect his or her personal views about the subject company or companies and its or their securities, and no part of his or her compensation was, is or will be, directly or indirectly related to specific recommendations or views expressed in this report.

About Us:

Shah Investor's Home Ltd (SIHL) is an ISO 9001:2015 Certified financial Services Company established in 1994 at Ahmadabad, Gujarat. Customer satisfaction is guaranteed through our diversified product portfolio, professional management and customer first attitude. SIHL was the first broking house in Gujarat with membership in National Securities Depository Ltd (NSDL) and was the first broking name providing services in NSE F&O in Ahmedabad. Today, SIHL ranks among the top most players in Gujarat in retail stock broking area with 45 branches, 350 franchisee across India and providing service to more than 1,25,000 clients.