



MORNING MANTRA



Daily Derivatives & Market Report

Sep 06, 2021



Indian equity benchmarks ended higher on Monday. Benchmarks started the session on optimistic note, amid a private report that recovering from the economic slump caused by the pandemic, hiring trends saw an improvement in August. The previous month saw a 26% on-year increase in hiring activity to 2.78 lakh. Also, the RBI data showed that the country's foreign exchange reserves soared by \$16.663 billion to touch a lifetime high of \$633.558 billion in the week ended August 27, mainly due to an increase in Special Drawing Rights (SDR) holdings.

Key indices remained higher for the whole trading session, as domestic sentiments were positive, after the Income Tax Department of India said that the Central Board of Direct Taxes (CBDT) has issued refunds of over Rs 67,401 crore to more than 23.99 lakh taxpayers between April 1 and August 16. It further said that the income tax refunds of Rs 16,373 crore have been issued in 22,61,918 cases and corporate tax refunds of Rs 51,029 crore have been issued in 1,37,327 cases.

Finally markets ended in green terrain, as the government is likely to extend an incentive scheme 'the Indian Footwear Leather and Accessories Development Programme (IFLADP)' for leather and footwear industries till 2025-26, to further boost manufacturing, exports and job creation. The commerce and industry ministry has submitted a proposal for implementation of the IFLADP with an outlay of Rs 1,700 crore, to be incurred during 2021-22 to 2025-26, and the Union Cabinet may soon approve the same.

On the global front, European markets were trading higher boosted by optimism that curbs to central bank stimulus will be delayed, while traders focused on new additions to Germany's benchmark. Asian markets ended mostly higher on Monday, even after Singapore retail sales increased at a softer pace in July. The data from the Department of Statistics showed that retail sales grew 0.2 percent year-on-year in July, after a 26.0 percent rise in June. Motor vehicle sales declined 9.8 percent annually in July, after an 80.6 percent growth in the previous month.

MARKET SELFIE



MARKET SUMMARY

Domestic Indices	Close	Points	% Change
SENSEX	58296.91	166.96	0.29
NIFTY	17377.80	54.20	0.31
MIDCAP	24425.92	43.73	0.18
SMLCAP	27466.66	161.35	0.59
BSEFMC	14784.09	-22.50	-0.15
AUTO	22796.84	120.06	0.53
POWER	2982.82	-15.54	-0.52
REALTY	3423.12	98.59	2.97
BSE IT	34920.53	510.62	1.48
BANKEX	41707.14	-174.91	-0.42
OIL GAS	17436.42	-115.59	-0.66
METAL	20666.77	49.62	0.24
INDIA VIX	15.10	0.56	3.83

ADVANCE - DECLINE

Index	Advance	Decline	Unchanged
NSE	1019	1007	104
BSE	1643	1686	166

MARKET TURNOVER (₹ in Crs)

Segment	Current	Previous	Net %
BSE CASH	3965	4800	(17)
NSE CASH	56398	63806	(12)
NSE F&O	3502350	3952681	(11)

KEY INDICES RATIOS

INDEX	P/E	P/B	Dividend Yield
NIFTY	26.63	4.39	1.03
SENSEX	30.40	3.72	0.92

KEY NUMBERS TRACKER



FII – DII ACTIVITY IN CASH SEGMENT (₹ in Crs)

FII-DII*	Buy	Sell	Net
DII	5825	5278	547
FII	5390	5979	(589)

Note: FPI & DII Figures are provisional

FII ACTIVITY IN DERIVATIVES SEGMENT (₹ in Crs)

FII	Buy	Sell	Net
Index Futures	2862.88	2515.79	347
Index Options	261073.15	256207.46	4866
Stock Futures	12929.80	13133.03	(203)
Stock Options	15918.99	16129.45	(210)

PUT-CALL RATIO

Index	Current	Previous
NIFTY	1.30	1.35
BANK NIFTY	0.67	0.80

DOLLAR INDEX

Dollar Index	Current	Previous	% Change
DXY	92.25	92.11	0.15

10-YEARS G-SEC YIELD

Country	Current	Previous	% Change
INDIA	6.173	6.156	0.28
USA	1.326	1.322	0.28

KEY COMMODITIES TRACKER (in \$)

Commodity	Current	Change Points	% Change
Gold	1823.70	-2.91	-0.16
Silver	24.72	0.04	0.17
Crude-Oil	69.09	-0.20	-0.29
Brent-Crude	72.38	-0.23	-0.32

CURRENCY FUTURES & INDEX TRENDS TRACKER



CURRENCY FUTURES

Expiry	Close	Change Points	% Change
28 Sep -21 USD-INR	73.23	0.05	0.07
28 Sep -21 EUR-INR	86.94	0.01	0.02
28 Sep -21 GBP-INR	101.36	0.13	0.12
28 Sep -21 JPY- INR	66.69	0.06	0.10

INDICES – SUPPORT-RESISTANCE-PIVOT LEVELS

Index	Close	S2	S1	Pivot	R1	R2
NIFTY	17378	17300	17339	17384	17423	17468
SENSEX	58297	58022	58160	58338	58475	58653
NIFTY FUTURES	17408	17331	17370	17399	17438	17467
BANK NIFTY	36592	36321	36457	36690	36826	37059
CNX IT	35415	34637	35026	35245	35634	35854
CNX MIDCAP	29178	29005	29091	29173	29260	29341
CNX SMALLCAP	10560	10468	10514	10544	10590	10620
INDIA VIX	15.11	13.59	14.35	14.81	15.57	16.04

INDEX TREND ANALYSIS

Index	Daily	Weekly	Monthly
NIFTY	Buy	Buy	Buy
SENSEX	Buy	Buy	Buy
NIFTY FUTURES	Buy	Buy	Buy
BANK NIFTY	Buy	Buy	Buy
CNX IT	Buy	Buy	Buy
CNX MIDCAP	Buy	Buy	Buy
CNX SMALLCAP	Buy	Buy	Buy
INDIA VIX	Buy	Neutral	Sell

SECURITIES BAN IN F&O TRADES FOR 07-09-2021

IBULHSGFIN, NATIONALUM

TECHNICAL VIEWS



NIFTY

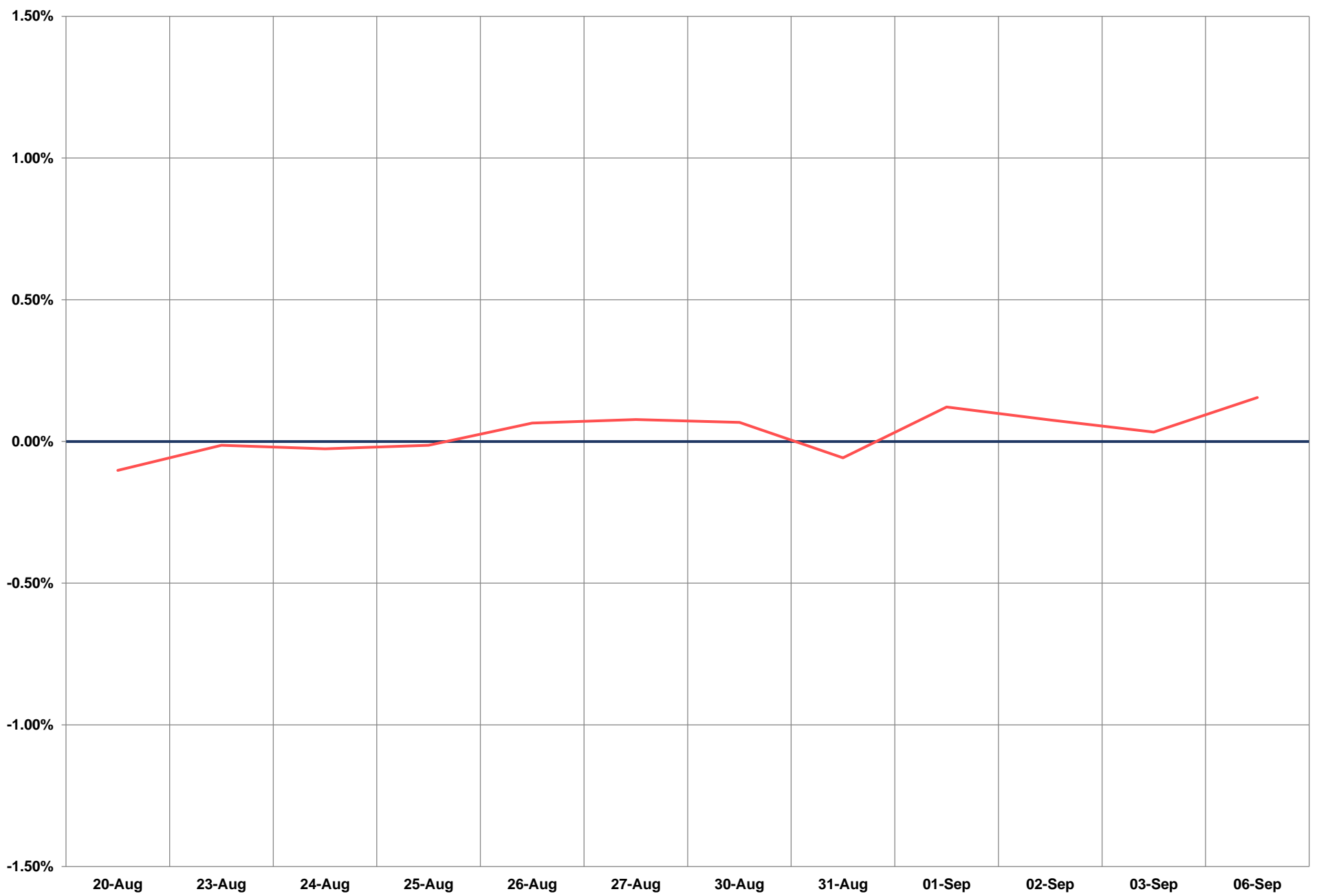
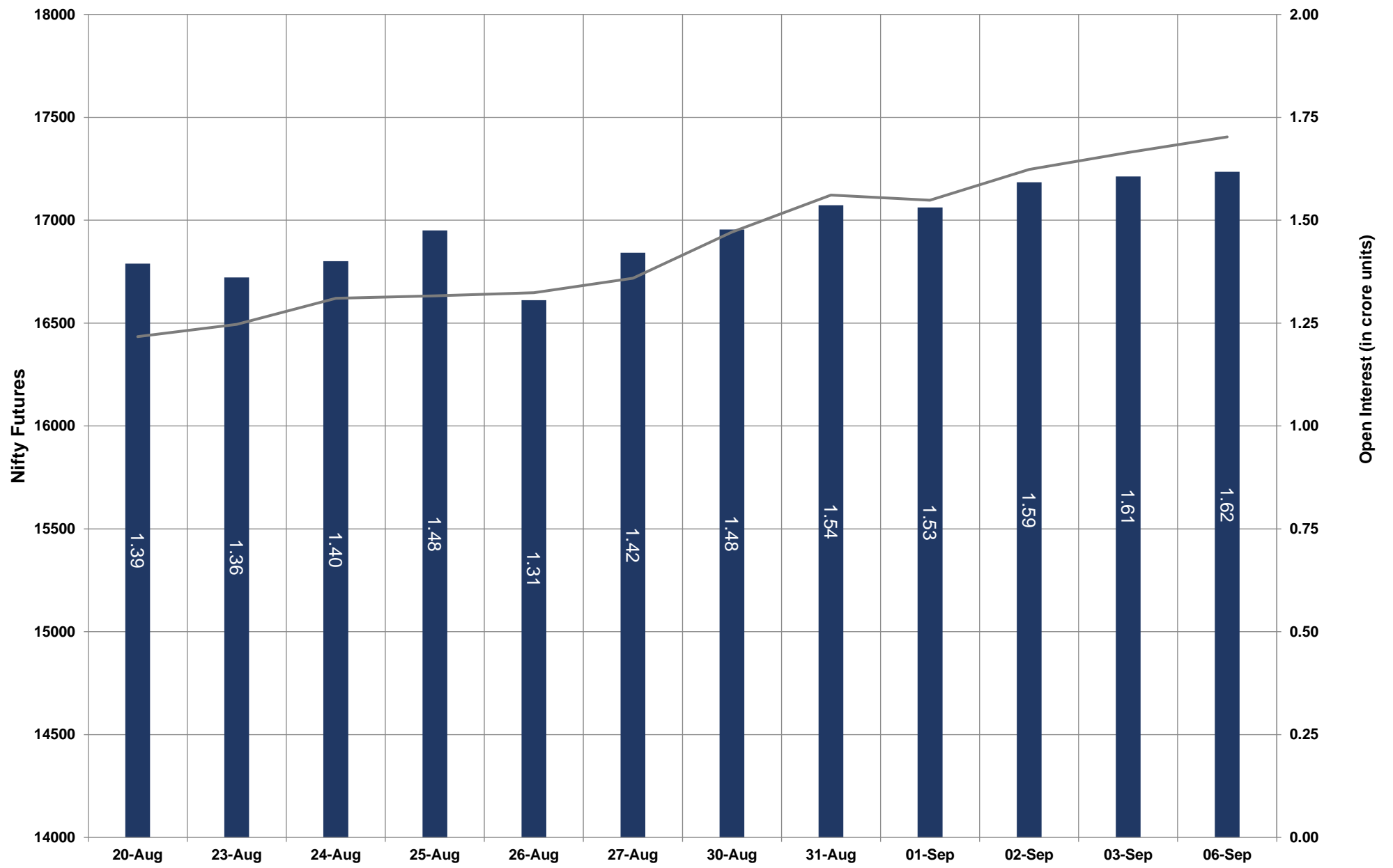


- Nifty Cash = **17,377.80 (+0.31%)**
- Resistance levels = **17,460** and **17,520**
- Support levels = **17,280** and **17,160**

TECHNICAL VIEWS



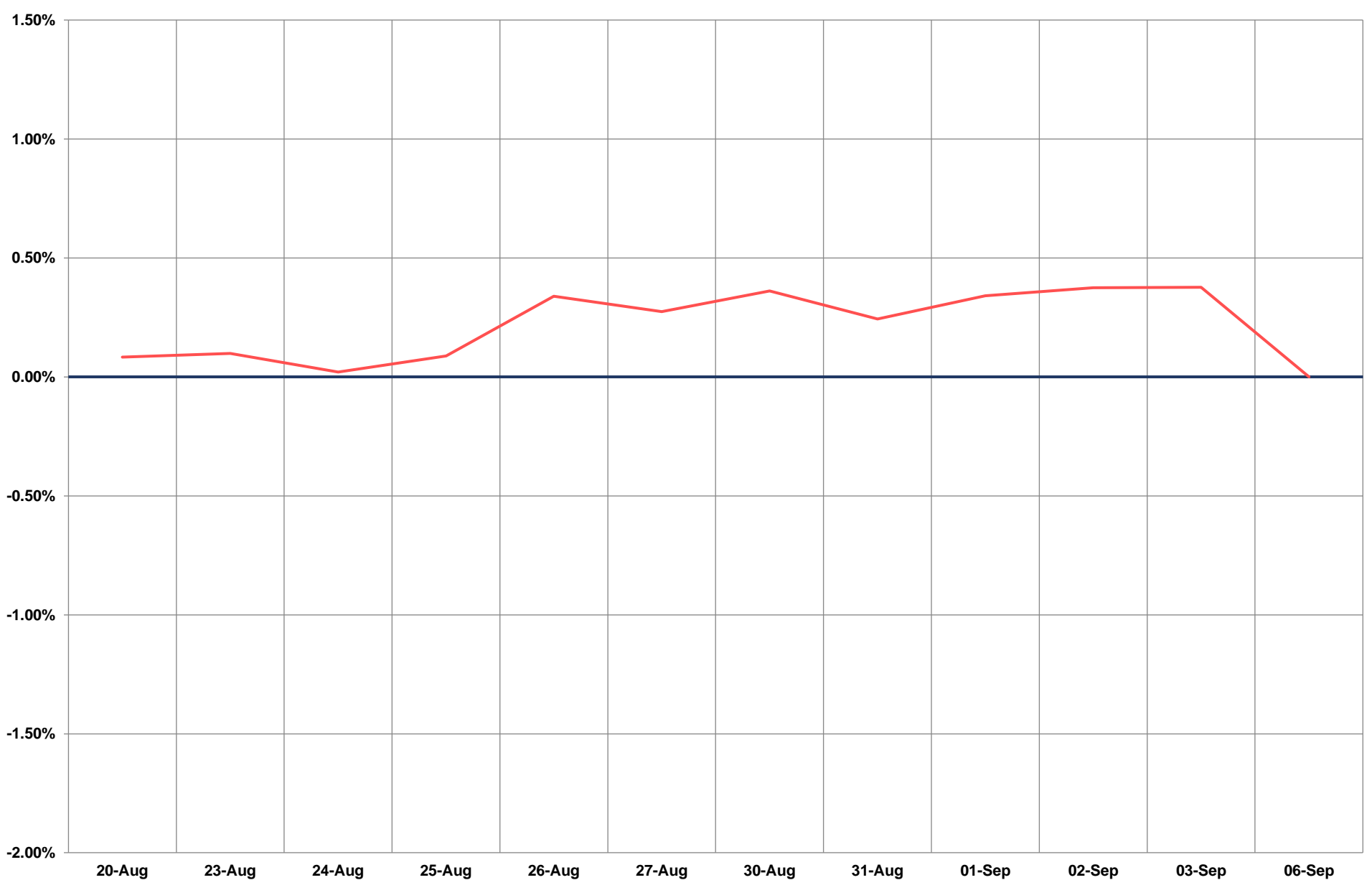
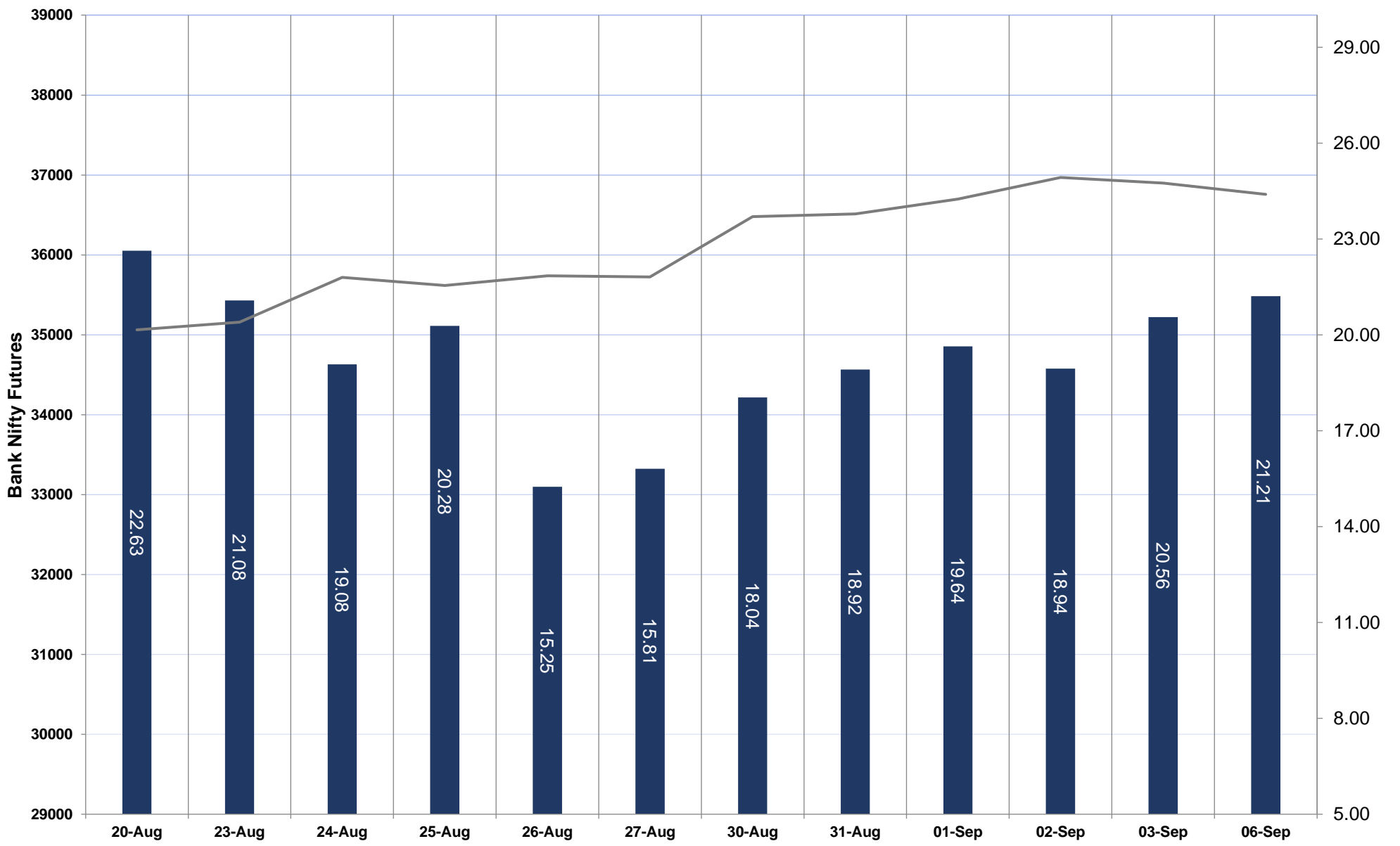
NIFTY FUTURES



TECHNICAL VIEWS



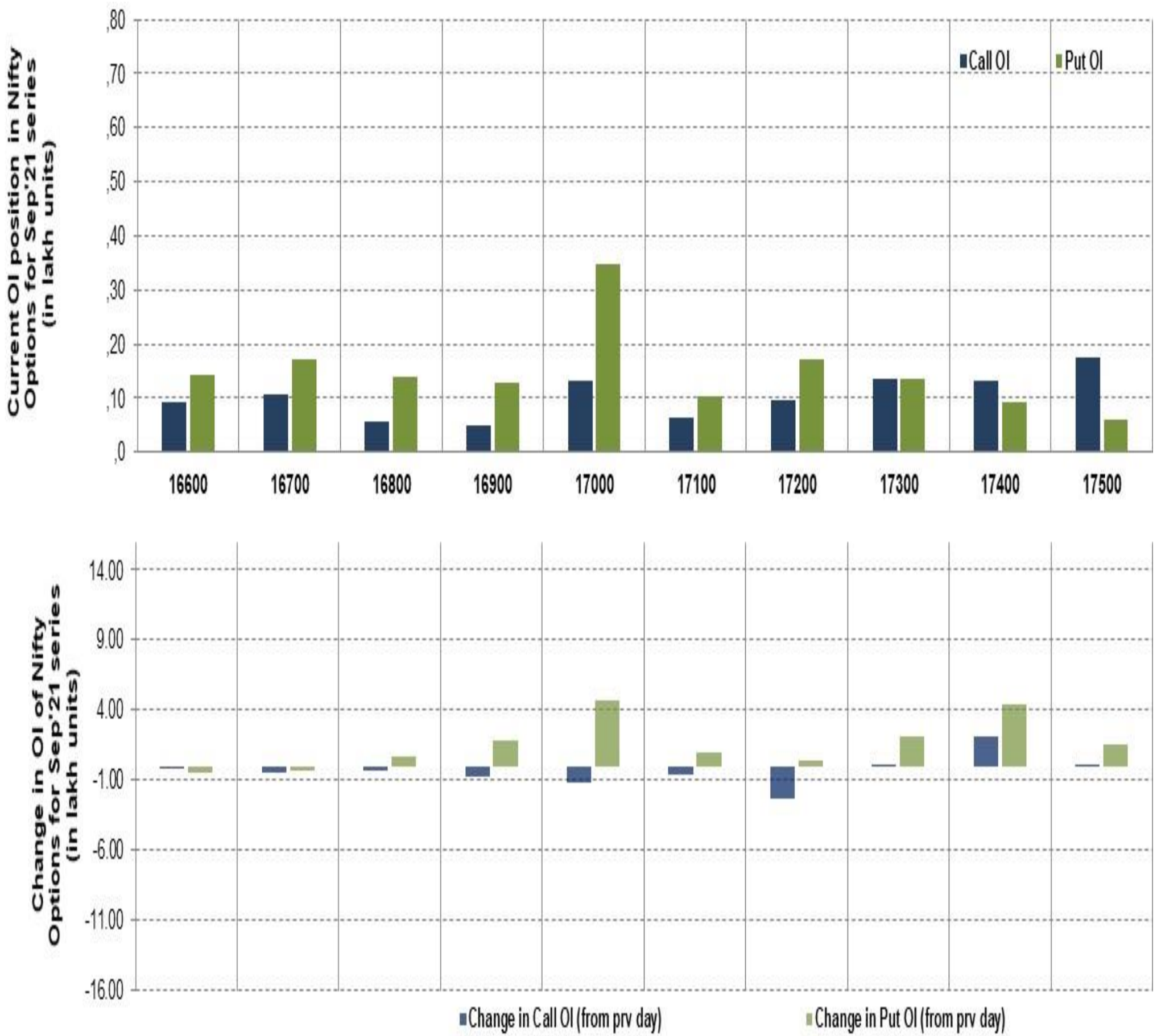
BANK NIFTY FUTURES



TECHNICAL VIEWS



NIFTY OPTIONS



- **Most Active Nifty Call** with an addition of **0.01 million** in Open Interests is **Strike Price of 17,500**
- **Most Active Nifty Put** with an addition of **0.50 millions** in Open Interests is **Strike Price of 17,000**
- **Maximum Open Interest an outstanding** was **1.75 millions** for Calls at **Strike Price of 17,500**
- **Maximum Open Interest an outstanding** was **3.50 millions** for Puts at **Strike Price of 17,000**

Disclaimer



The Information provided by SMS or in newsletter or in any document has been prepared by Shah Investor's Home Ltd (SIHL). The Information provided by SMS or in newsletter does not constitute an offer or solicitation for the purchase or sale of any financial instrument or as an official confirmation of any transaction. The information contained herein is from publicly available data or other sources believed to be reliable, but we do not represent that it is accurate or complete and it should not be relied on as such. SIHL or any of its affiliates/ group companies shall not be in any way responsible for any loss or damage that may arise to any person from any error in the information contained in this report or SMS. This Information provided by SMS, reports or in newsletter is provided for assistance only and is not intended to be and must not alone be taken as the basis for an investment decision. The user assumes the entire risk of any use made of this information. Each recipient of this Information provided by SMS, report or in newsletter should make such investigation as it deems necessary to arrive at an independent evaluation of an investment in the securities of companies referred to in this information provided by SMS, report or in newsletter (including the merits and risks involved), and should consult his own advisors to determine the merits and risks of such investment. The investment discussed or views expressed may not be suitable for all investors. This information is strictly confidential and is being furnished to you solely for your information.

The information should not be reproduced or redistributed or passed on directly or indirectly in any form to any other person or published, copied, in whole or in part, for any purpose. The information provided by report or SMS is not directed or intended for distribution to, or use by, any person or entity who is a citizen or resident of or located in any locality, state, country or other jurisdiction, where such distribution, publication, availability or use would be contrary to law, regulation or which would subject SIHL and affiliates/ group companies to any registration or licensing requirements within such jurisdiction. The distribution of this Information provided by SMS or in newsletter in certain jurisdictions may be restricted by law, and persons in whose possession this Information provided by SMS or in newsletter comes, should inform themselves about and observe, any such restrictions. The information given or Information provided by SMS, report or in newsletter is as of the date of the issue date of report or the date on which SMS provided and there can be no assurance that future results or events will be consistent with this information. This information is subject to change without any prior notice. SIHL reserves the right to make modifications and alterations to this statement as may be required from time to time. However, SIHL is under no obligation to update or keep the information current.

Nevertheless, SIHL is committed to providing independent and transparent recommendation to its client and would be happy to provide any information in response to specific client queries. Neither SIHL nor any of its affiliates, group companies, directors, employees, agents or representatives shall be liable for any damages whether direct, indirect, special or consequential including lost revenue or lost profits that may arise from or in connection with the use of the information. Past performance is not necessarily a guide to future performance. The disclosures of interest statements incorporated in the Information provided by SMS, report or in newsletter are provided solely to enhance the transparency and should not be treated as endorsement of the views expressed in the report. The analyst for this report certifies that all of the views expressed in this report accurately reflect his or her personal views about the subject company or companies and its or their securities, and no part of his or her compensation was, is or will be, directly or indirectly related to specific recommendations or views expressed in this report.