



# MORNING MANTRA



Daily Derivatives & Market Report

Nov 23, 2021



Indian equity benchmarks staged recovery to end higher on Tuesday. After a negative start, markets remained volatile during the first half of the trading session, amid report that foreign institutional investors (FIIs) net sold shares worth Rs 3,438.76 crore in the Indian equity market on November 22, as per provisional data available on the NSE. Traders were cautious, as a senior RBI official witting on the rate-setting panel said that the Monetary Policy Committee (MPC) should not continue with unconventional measures now, and it is possible to have lower liquidity levels while continuing with the growth-enhancing accommodative stance.

In the second half of the trading session, key indices turned positive, after Union Commerce and Industry Minister Piyush Goyal said India is working on 'Aatmanirbhar Bharat' just like the United States embarked on a 'Build Back Better' framework. Some relief came in as an SBI research report stated that the country's GDP growth is likely to be around 8.1 per cent in the second quarter of the current financial year and in the range of 9.3-9.6 per cent during fiscal 2022. It added that in the first quarter of FY 22, the economy grew 20.1 per cent.

Adding more optimism, the preliminary data of the commerce ministry showed that the country's exports rose 18.8 per cent to \$20.01 billion during the three week period of this month (November 1-21), due to healthy growth in sectors such as petroleum products, engineering goods, chemicals and gems and jewellery. Some support came with Fitch Ratings' report that the Centre could better its fiscal deficit at 6.6 per cent of GDP in this financial year (FY22) on stronger-than-expected revenue buoyancy, even if the budgeted disinvestment target is not met.

On the global front, European markets were trading lower after Euro area consumer confidence deteriorated for a second straight month and at a faster than expected pace in November to its lowest level in seven months. Asian markets ended mostly lower on Tuesday, even after consumer confidence in South Korea picked up steam in November, the latest survey from the Bank of Korea showed on Tuesday with a sentiment index score of 107.6 - up from 106.8 in October. Consumer sentiment regarding current living standards was unchanged at 92, while the outlook was one point lower than in the previous month at 97.

# MARKET SELFIE



## MARKET SUMMARY

Domestic Indices	Close	Points	% Change
SENSEX	58664.33	198.44	0.34
NIFTY	17503.35	86.80	0.50
MIDCAP	25646.47	407.45	1.61
SMLCAP	28450.31	504.74	1.81
BSEFMC	14091.42	77.38	0.55
AUTO	25821.62	155.53	0.61
POWER	3619.13	112.39	3.20
REALTY	4043.40	92.85	2.35
BSE IT	34572.24	-66.85	-0.19
BANKEX	42496.54	159.07	0.38
OIL GAS	18113.61	192.43	1.07
METAL	19752.87	663.80	3.48
INDIA VIX	18.02	0.50	2.85

## ADVANCE - DECLINE

Index	Advance	Decline	Unchanged
NSE	1550	497	75
BSE	2428	825	162

## MARKET TURNOVER (₹ in Crs)

Segment	Current	Previous	Net %
BSE CASH	6290	5568	13
NSE CASH	76686	75025	2
NSE F&O	6923226	6723198	3

## KEY INDICES RATIOS

INDEX	P/E	P/B	Dividend Yield
NIFTY	24.15	4.38	1.15
SENSEX	27.53	3.59	0.96

# KEY NUMBERS TRACKER



## FII – DII ACTIVITY IN CASH SEGMENT (₹ in Crs)

FII-DII*	Buy	Sell	Net
DII	9030	7618	1412
FII	10101	14578	(4477)

Note: FPI & DII Figures are provisional

## FII ACTIVITY IN DERIVATIVES SEGMENT (₹ in Crs)

FII	Buy	Sell	Net
Index Futures	8275.36	7978.10	297
Index Options	560589.14	559776.69	812
Stock Futures	60252.94	56983.78	3269
Stock Options	30824.47	30905.43	(81)

## PUT-CALL RATIO

Index	Current	Previous
NIFTY	0.84	0.67
BANK NIFTY	0.72	0.51

## DOLLAR INDEX

Dollar Index	Current	Previous	% Change
DXY	96.56	96.54	0.02

## 10-YEARS G-SEC YIELD

Country	Current	Previous	% Change
INDIA	6.366	6.351	0.24
USA	1.653	1.625	1.72

## KEY COMMODITIES TRACKER (in \$)

Commodity	Current	Change Points	% Change
Gold	1794.39	-14.79	-0.82
Silver	23.75	-0.49	-2.00
Crude-Oil	76.47	-0.28	-0.36
Brent-Crude	79.82	0.12	0.16

# CURRENCY FUTURES & INDEX TRENDS TRACKER



## CURRENCY FUTURES

Expiry	Close	Change Points	% Change
26 Nov -21 USD-INR	74.50	0.06	0.09
26 Nov -21 EUR-INR	83.83	-0.23	-0.27
26 Nov -21 GBP-INR	99.59	-0.48	-0.48
26 Nov -21 JPY- INR	64.89	-0.34	-0.52

## INDICES – SUPPORT-RESISTANCE-PIVOT LEVELS

Index	Close	S2	S1	Pivot	R1	R2
NIFTY	17503	17087	17295	17424	17633	17762
SENSEX	58664	57289	27977	58406	59093	59522
NIFTY FUTURES	17490	17130	17310	17430	17610	17730
BANK NIFTY	37273	36322	36797	37123	37599	37924
CNX IT	35504	34348	34926	35286	35864	36224
CNX MIDCAP	30865	29673	30269	30583	31179	31493
CNX SMALLCAP	10939	10507	10723	10838	11054	11170
INDIA VIX	18.02	15.04	16.53	18.28	19.77	21.52

## INDEX TREND ANALYSIS

Index	Daily	Weekly	Monthly
NIFTY	Sell	Neutral	Buy
SENSEX	Sell	Neutral	Buy
NIFTY FUTURES	Sell	Neutral	Buy
BANK NIFTY	Sell	Neutral	Buy
CNX IT	Neutral	Buy	Buy
CNX MIDCAP	Neutral	Neutral	Buy
CNX SMALLCAP	Neutral	Neutral	Buy
INDIA VIX	Neutral	Sell	Neutral

## SECURITIES BAN IN F&O TRADES FOR 24-11-2021

ESCORTS, IDEA

# TECHNICAL VIEWS



## NIFTY

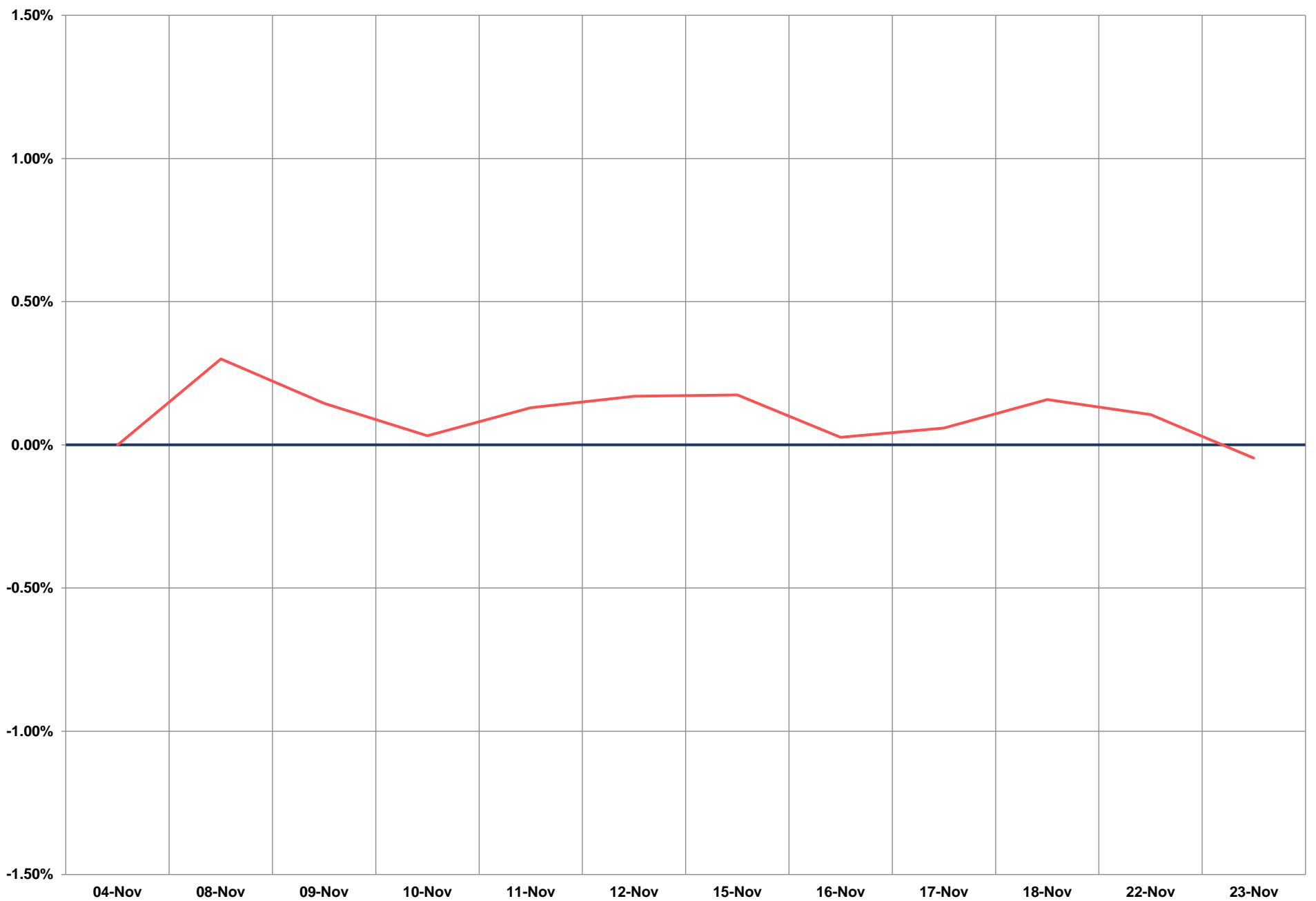
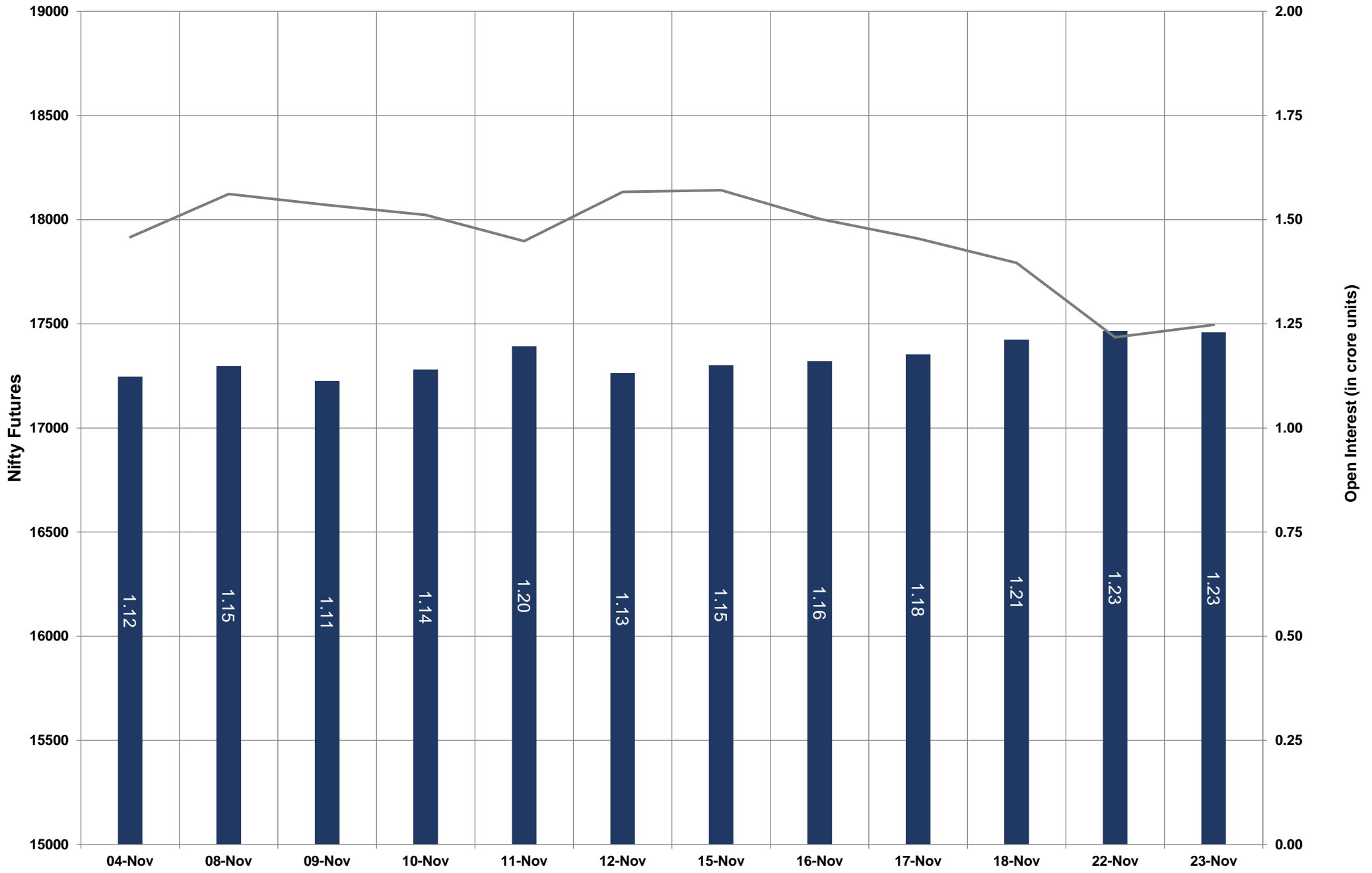


- Nifty Cash = 17,503.35 (+0.50)
- Resistance levels = 17,580 and 17,720
- Support levels = 17,430 and 17,320

# TECHNICAL VIEWS



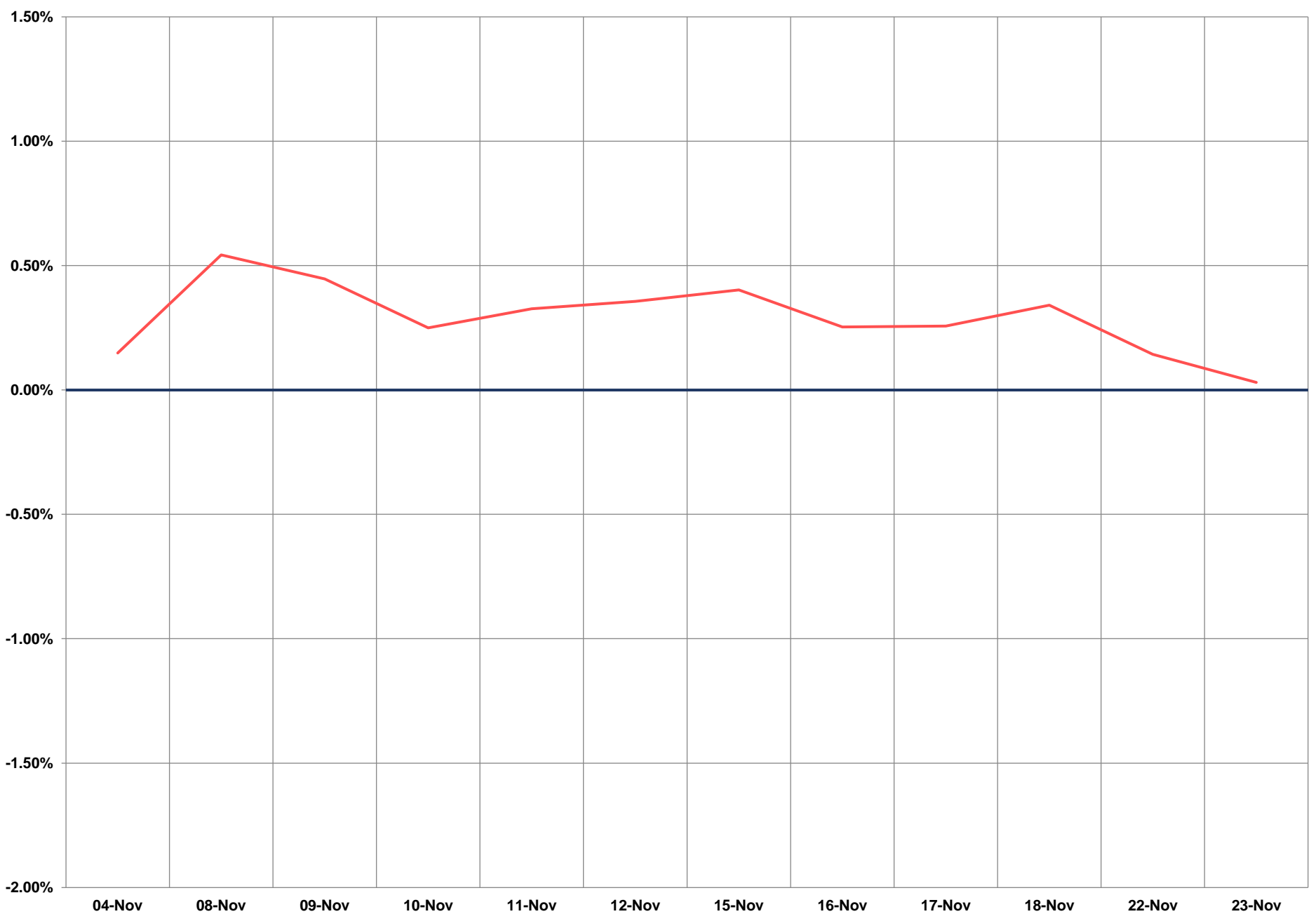
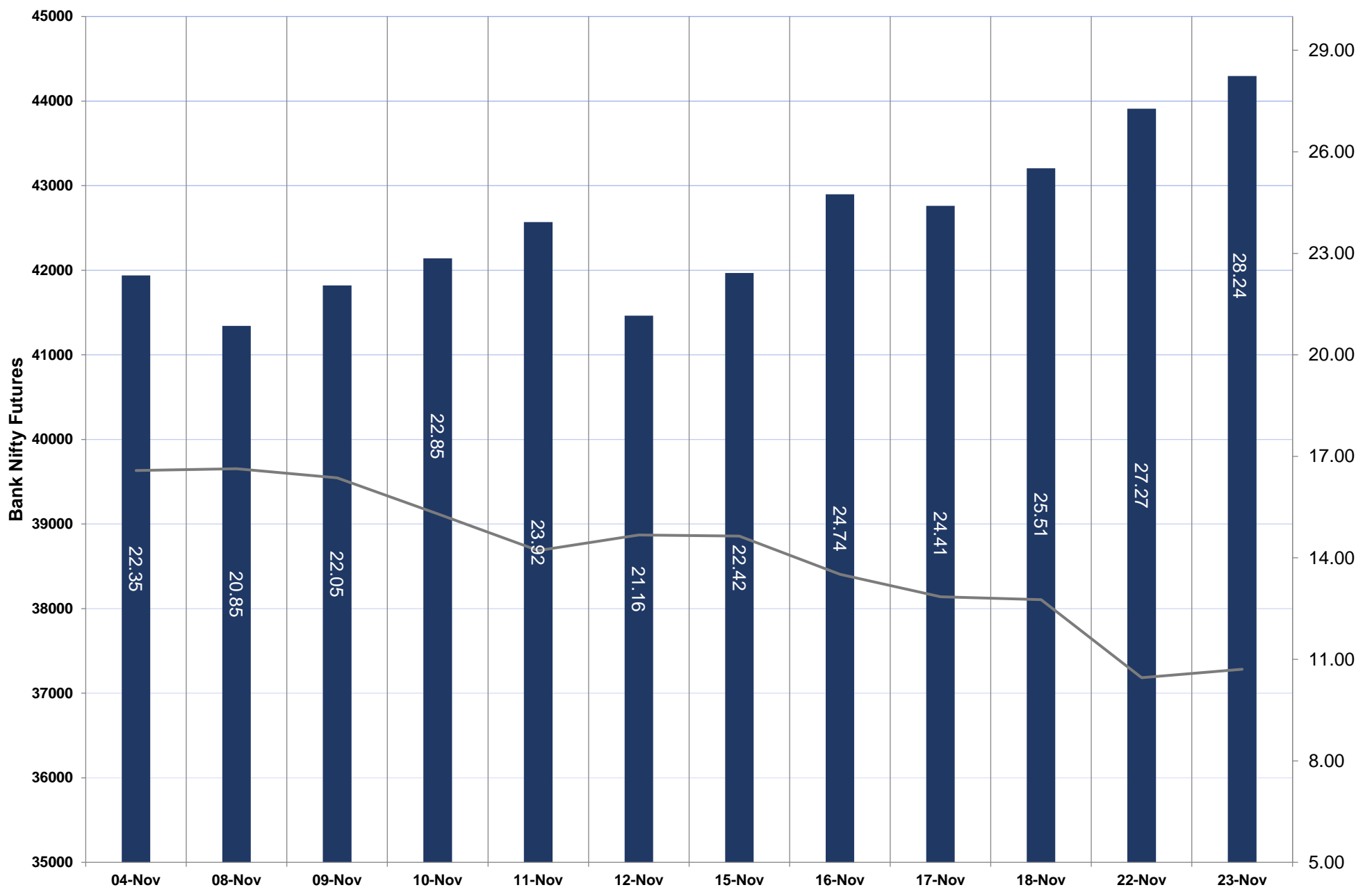
## NIFTY FUTURES



# TECHNICAL VIEWS



## BANK NIFTY FUTURES

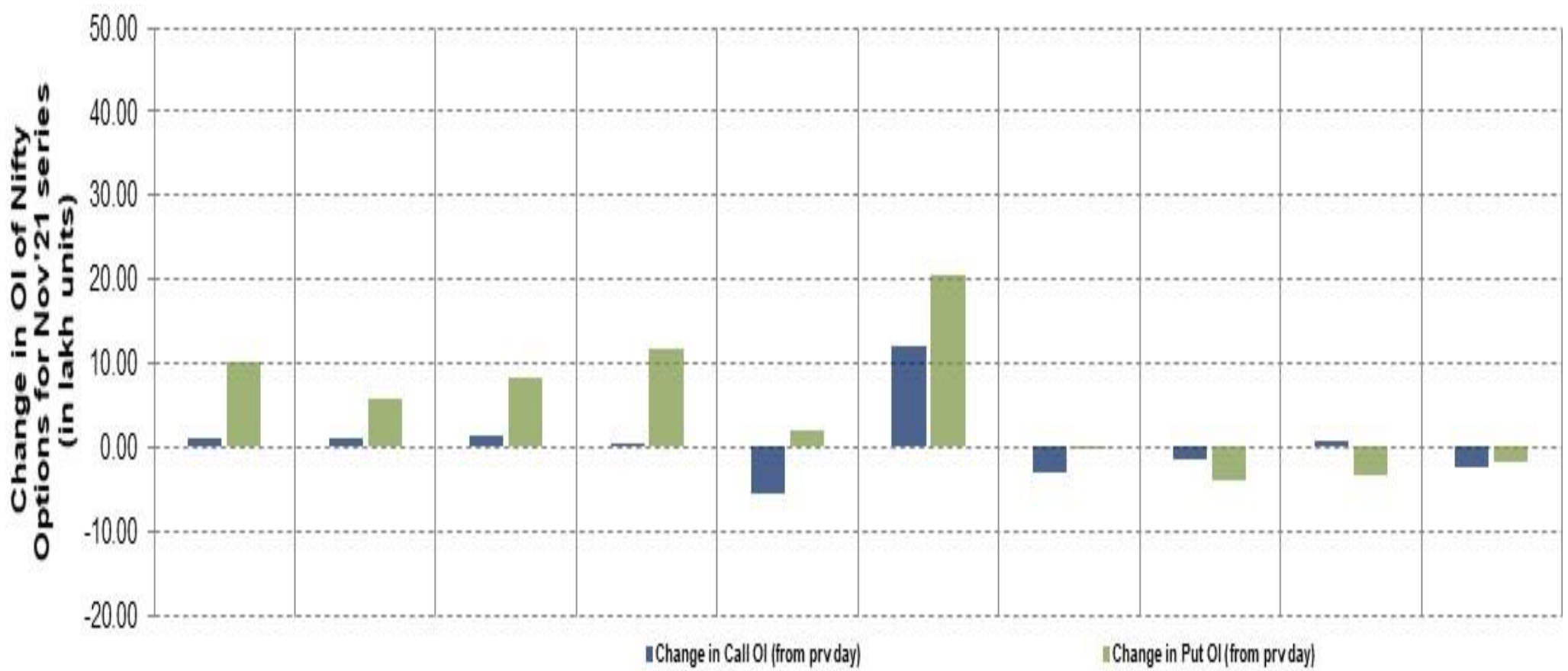
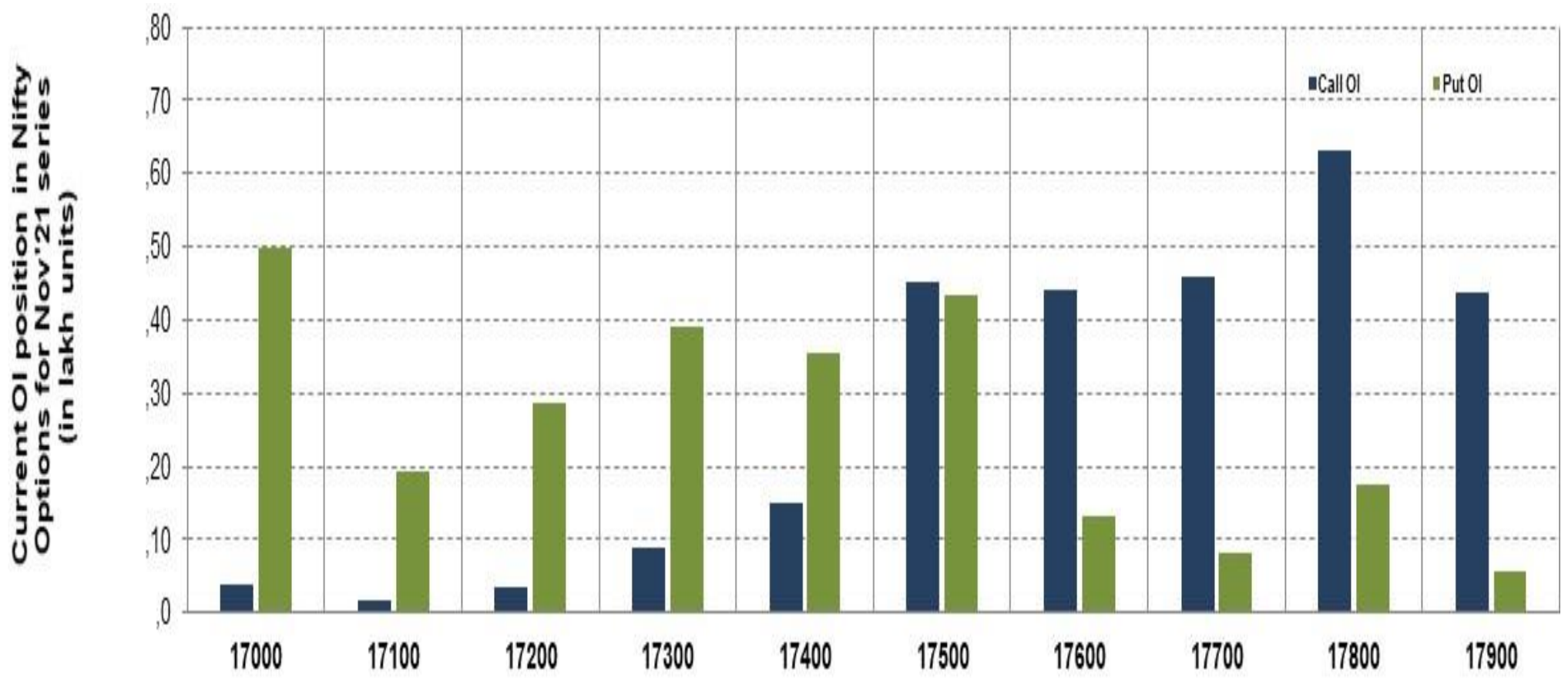




# TECHNICAL VIEWS



## NIFTY OPTIONS



- **Most Active Nifty Call** with An addition of **0.10 million** in Open Interests is **Strike Price of 17,800**
- **Most Active Nifty Put** with An addition of **1.01 millions** in Open Interests is **Strike Price of 17,000**
- **Maximum Open Interest** an outstanding was **6.30 millions** for Calls at **Strike Price of 17,800**
- **Maximum Open Interest** an outstanding was **5.00 millions** for Puts at **Strike Price of 17,000**

# Disclaimer



The Information provided by SMS or in newsletter or in any document has been prepared by Shah Investor's Home Ltd (SIHL). The Information provided by SMS or in newsletter does not constitute an offer or solicitation for the purchase or sale of any financial instrument or as an official confirmation of any transaction. The information contained herein is from publicly available data or other sources believed to be reliable, but we do not represent that it is accurate or complete and it should not be relied on as such. SIHL or any of its affiliates/ group companies shall not be in any way responsible for any loss or damage that may arise to any person from any error in the information contained in this report or SMS. This Information provided by SMS, reports or in newsletter is provided for assistance only and is not intended to be and must not alone be taken as the basis for an investment decision. The user assumes the entire risk of any use made of this information. Each recipient of this Information provided by SMS, report or in newsletter should make such investigation as it deems necessary to arrive at an independent evaluation of an investment in the securities of companies referred to in this information provided by SMS, report or in newsletter (including the merits and risks involved), and should consult his own advisors to determine the merits and risks of such investment. The investment discussed or views expressed may not be suitable for all investors. This information is strictly confidential and is being furnished to you solely for your information.

The information should not be reproduced or redistributed or passed on directly or indirectly in any form to any other person or published, copied, in whole or in part, for any purpose. The information provided by report or SMS is not directed or intended for distribution to, or use by, any person or entity who is a citizen or resident of or located in any locality, state, country or other jurisdiction, where such distribution, publication, availability or use would be contrary to law, regulation or which would subject SIHL and affiliates/ group companies to any registration or licensing requirements within such jurisdiction. The distribution of this Information provided by SMS or in newsletter in certain jurisdictions may be restricted by law, and persons in whose possession this Information provided by SMS or in newsletter comes, should inform themselves about and observe, any such restrictions. The information given or Information provided by SMS, report or in newsletter is as of the date of the issue date of report or the date on which SMS provided and there can be no assurance that future results or events will be consistent with this information. This information is subject to change without any prior notice. SIHL reserves the right to make modifications and alterations to this statement as may be required from time to time. However, SIHL is under no obligation to update or keep the information current.

Nevertheless, SIHL is committed to providing independent and transparent recommendation to its client and would be happy to provide any information in response to specific client queries. Neither SIHL nor any of its affiliates, group companies, directors, employees, agents or representatives shall be liable for any damages whether direct, indirect, special or consequential including lost revenue or lost profits that may arise from or in connection with the use of the information. Past performance is not necessarily a guide to future performance. The disclosures of interest statements incorporated in the Information provided by SMS, report or in newsletter are provided solely to enhance the transparency and should not be treated as endorsement of the views expressed in the report. The analyst for this report certifies that all of the views expressed in this report accurately reflect his or her personal views about the subject company or companies and its or their securities, and no part of his or her compensation was, is or will be, directly or indirectly related to specific recommendations or views expressed in this report.