



MORNING MANTRA



Daily Derivatives & Market Report

Jan 26, 2022



Indian equity benchmarks ended in red on Thursday. The start of the trading day was on a negative note, as the International Monetary Fund (IMF) cut India's economic growth forecast to 9 per cent for the current fiscal year ending March 31, joining a host of agencies which have downgraded their projections on concerns over the impact of a spread of new variant of coronavirus on business activity and mobility. Continues selling in FIIs also weighed on the markets. As per provisional data available on the NSE, foreign institutional investors (FIIs) net sold shares worth Rs 7,094.48 crore on January 25.

Bears held a tight grip over the Dalal Street after Icria Ratings' statement that the securitisation volumes in microfinance loans, which saw improvement in the first nine months of FY22, may witness some impact in the fourth quarter due to concerns over the third COVID-19 wave. Traders remained cautious, as India's rank improved one place to 85 among 180 countries in a corruption perception index (CPI) of 2021, according to a new report by Transparency International which, however, raised concern over the country's democratic status.

However, in the last hours of the trading session, markets staged some recovery, as traders got some relief on report that Central Board of Direct Taxes (CBDT) has issued Rs 1.62 lakh crore income tax refunds to over 1.79 crore taxpayers till January 24, 2022 of the current financial year. Besides, Vedanta Chairman Anil Agarwal said that India is on the growth path with innovation and digitalisation and stressed that government policies have created tremendous resources available for deployment in the country.

On the global front, European markets were trading lower as January's market turbulence continued after the Federal Reserve's hawkish comments regarding interest rate rises. Asian markets settled mostly lower, after manufacturing business conditions in South Korea deteriorated in January, the Bank of Korea said on Thursday as its Business Survey Index fell to a score of 90 in January from 95 in December. The outlook also came in at 90, down from 92 a month earlier.

MARKET SELFIE



MARKET SUMMARY

Domestic Indices	Close	Points	% Change
SENSEX	57276.94	-581.21	-1.00
NIFTY	17110.15	-167.80	-0.97
MIDCAP	23942.10	-303.36	-1.25
SMLCAP	28633.52	-235.81	-0.82
BSEFMC	13286.48	-111.72	-0.83
AUTO	26118.15	112.29	0.43
POWER	3902.68	-32.17	-0.82
REALTY	3666.50	-63.23	-1.70
BSE IT	33527.81	-1073.69	-3.10
BANKEX	43584.40	419.99	0.97
OIL GAS	18293.42	-99.77	-0.54
METAL	18934.62	-73.07	-0.38
INDIA VIX	21.07	-0.29	-1.36

ADVANCE - DECLINE

Index	Advance	Decline	Unchanged
NSE	861	1278	43
BSE	1422	1946	87

MARKET TURNOVER (₹ in Crs)

Segment	Current	Previous	Net %
BSE CASH	5324	5581	(5)
NSE CASH	80118	73501	9
NSE F&O	20057219	9422276	113

KEY INDICES RATIOS

INDEX	P/E	P/B	Dividend Yield
NIFTY	23.09	4.31	1.21
SENSEX	26.39	3.49	0.97

KEY NUMBERS TRACKER



FII – DII ACTIVITY IN CASH SEGMENT (₹ in Crs)

FII-DII*	Buy	Sell	Net
DII	10727.48	7846.16	2881.32.
FII	11417.36	17684.11	-6266.75

Note: FPI & DII Figures are provisional

FII ACTIVITY IN DERIVATIVES SEGMENT (₹ in Crs)

FII	Buy	Sell	Net
Index Futures	9028.03	12036.95	(3009)
Index Options	1794144.33	1785765.43	8379
Stock Futures	36376.91	37335.95	(959)
Stock Options	17284.99	16959.02	326

PUT-CALL RATIO

Index	Current	Previous
NIFTY	0.89	0.86
BANK NIFTY	1.06	1.06

DOLLAR INDEX

Dollar Index	Current	Previous	% Change
DXY	97.10	96.39	0.74

10-YEARS G-SEC YIELD

Country	Current	Previous	% Change
INDIA	6.746	6.662	1.26
USA	1.798	1.846	-2.62

KEY COMMODITIES TRACKER (in \$)

Commodity	Current	Change Points	% Change
Gold	1803.18	-18.74	-1.04
Silver	22.81	-0.77	-3.29
Crude-Oil	87.89	0.54	0.62
Brent-Crude	90.53	0.57	0.63

CURRENCY FUTURES & INDEX TRENDS TRACKER



CURRENCY FUTURES

Expiry	Close	Change Points	% Change
24 FEB -22 USD-INR	75.39	0.36	0.48
24 FEB -22 EUR-INR	84.46	-0.24	-0.28
24 FEB -22 GBP-INR	101.01	-0.05	-0.05
24 FEB -22 JPY- INR	65.51	-0.23	-0.36

INDICES – SUPPORT-RESISTANCE-PIVOT LEVELS

Index	Close	S2	S1	Pivot	R1	R2
NIFTY	17110	16737	16924	17053	17240	17369
SENSEX	57277	56006	56641	57075	57711	58144
NIFTY FUTURES	17110	16737	16923	17049	17235	17361
BANK NIFTY	37982	36579	37280	37714	38416	38849
CNX IT	33475	32585	33030	33697	34141	34808
CNX MIDCAP	29365	28741	29053	29265	29577	29790
CNX SMALLCAP	10889	10700	10795	10887	10982	11074
INDIA VIX	21.06	18.36	19.71	21.79	23.14	25.22

INDEX TREND ANALYSIS

Index	Daily	Weekly	Monthly
NIFTY	Sell	Buy	Buy
SENSEX	Sell	Buy	Buy
NIFTY FUTURES	Sell	Buy	Buy
BANK NIFTY	Buy	Buy	Neutral
CNX IT	Sell	Buy	Buy
CNX MIDCAP	Sell	Buy	Buy
CNX SMALLCAP	Neutral	Buy	Buy
INDIA VIX	Buy	Neutral	Sell

SECURITIES BAN IN F&O TRADES FOR 28-01-2022

NIL

TECHNICAL VIEWS



NIFTY

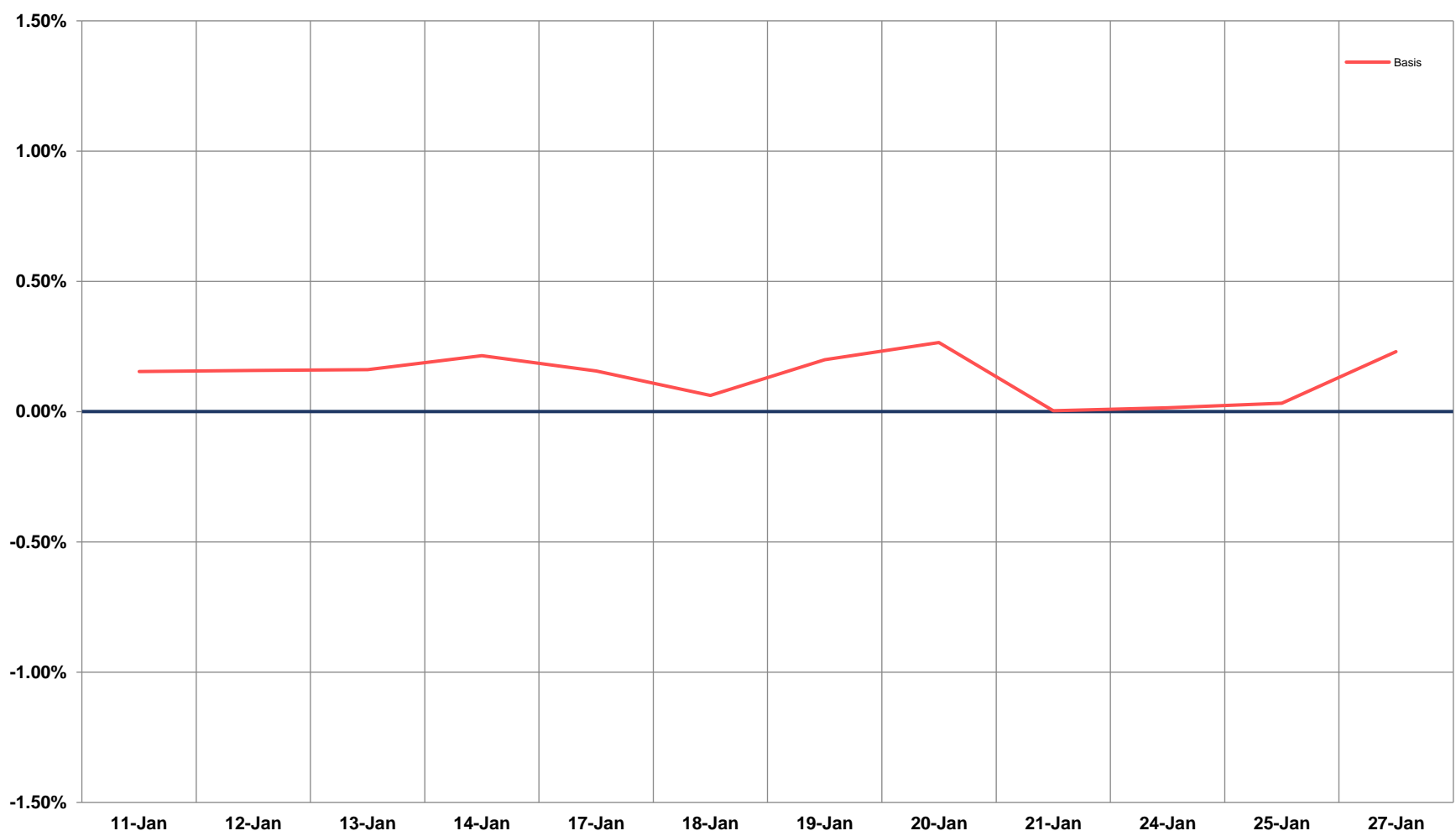
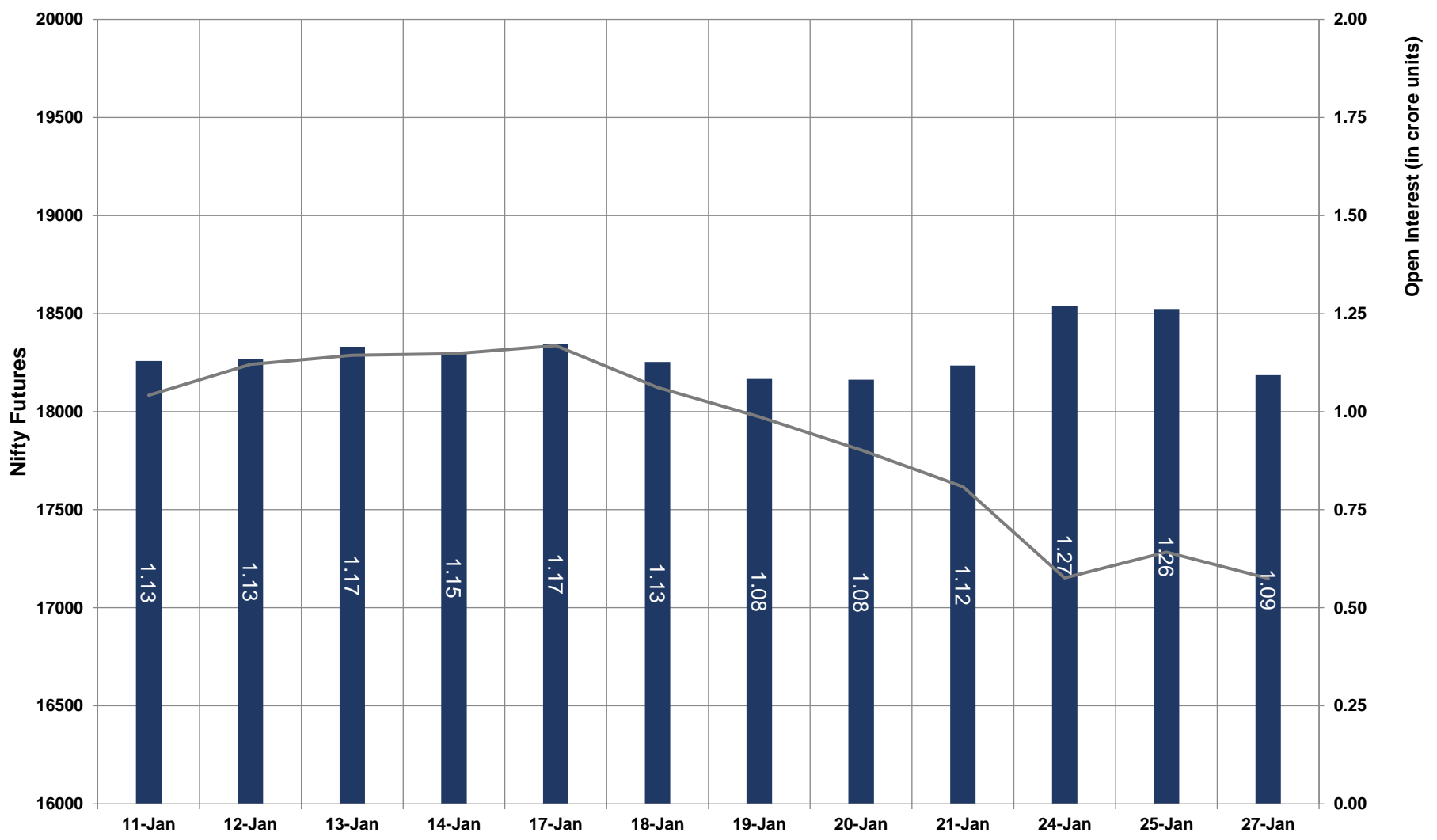


- Nifty Cash = 17110.15 (-0.97%)
- Resistance levels = 17,420 and 17540
- Support levels = 16980 and 16850

TECHNICAL VIEWS



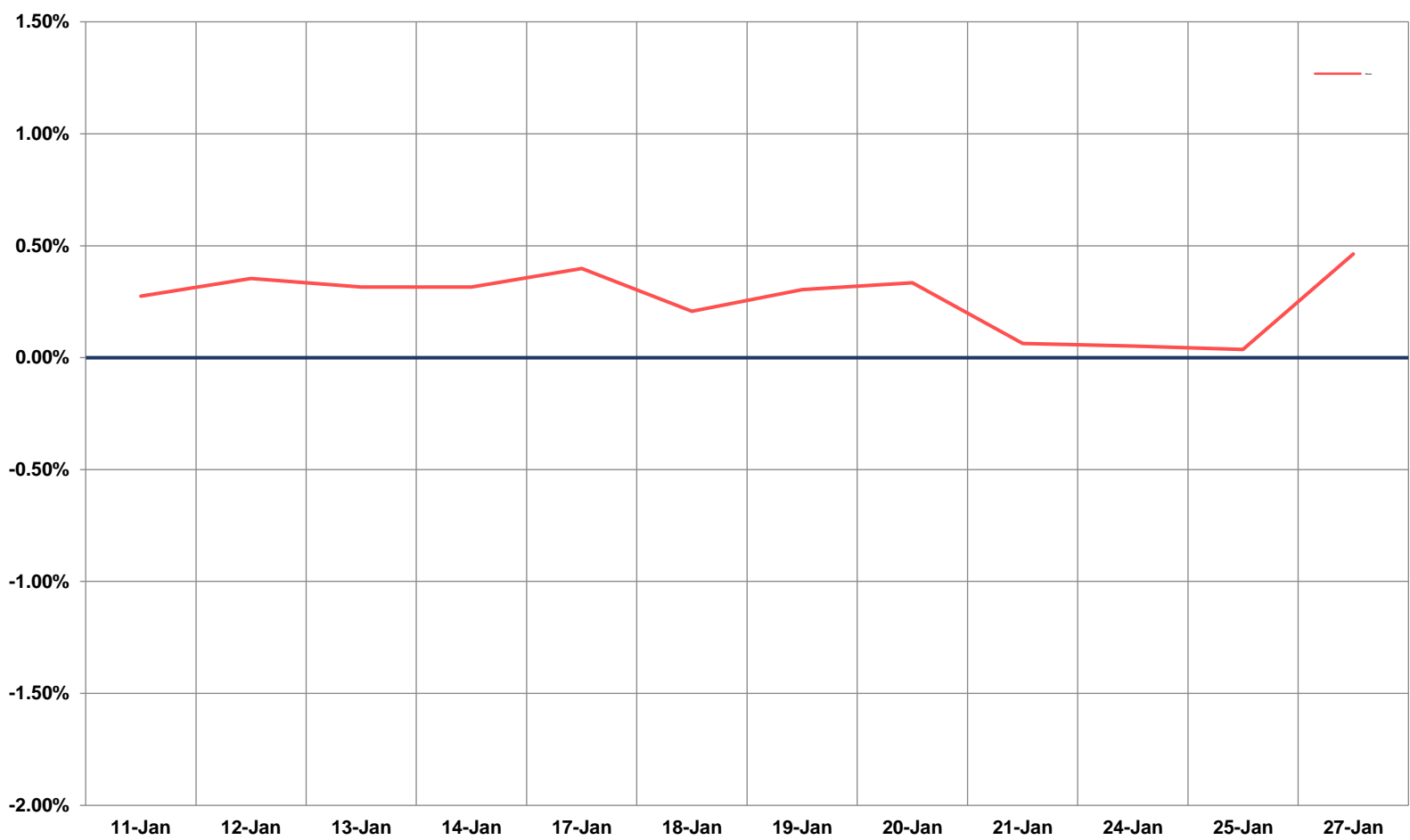
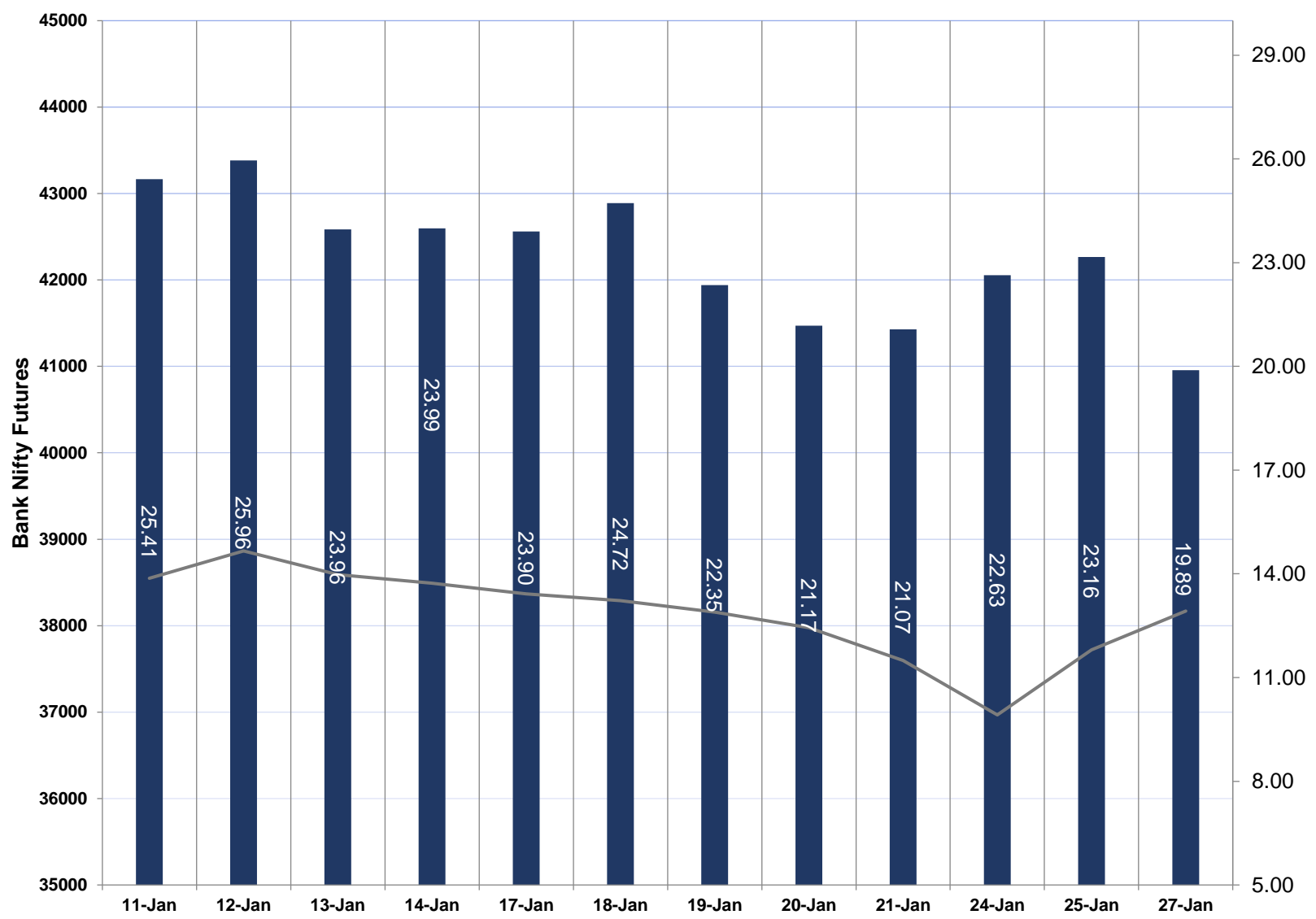
NIFTY FUTURES



TECHNICAL VIEWS



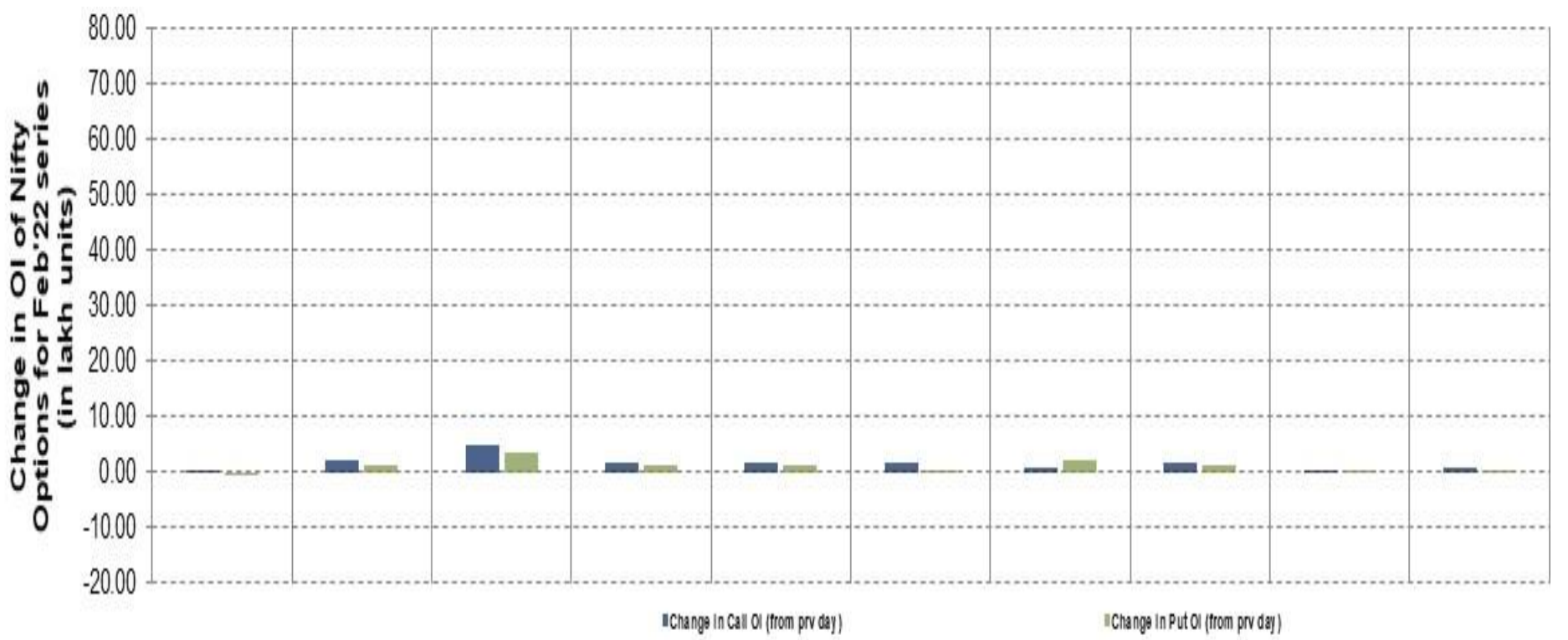
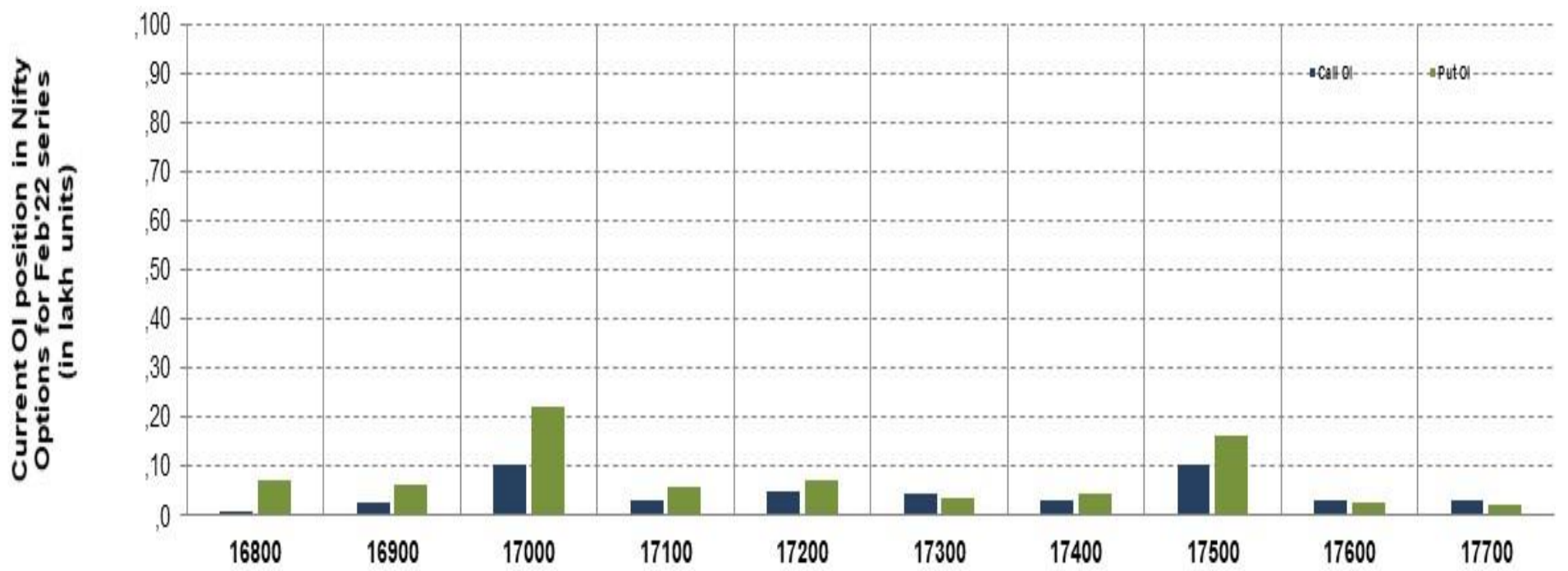
BANK NIFTY FUTURES



TECHNICAL VIEWS



NIFTY OPTIONS



- **Most Active Nifty Call** with a reduction of **0.18 million** in Open Interests is **Strike Price of 17500**
- **Most Active Nifty Put** with an addition of **0.35 millions** in Open Interests is **Strike Price of 17000**
- **Maximum Open Interest an outstanding** was **1.03 millions** for Calls at **Strike Price of 17500**
- **Maximum Open Interest an outstanding** was **2.23 millions** for Puts at **Strike Price of 17000**

Disclaimer



The Information provided by SMS or in newsletter or in any document has been prepared by Shah Investor's Home Ltd (SIHL). The Information provided by SMS or in newsletter does not constitute an offer or solicitation for the purchase or sale of any financial instrument or as an official confirmation of any transaction. The information contained herein is from publicly available data or other sources believed to be reliable, but we do not represent that it is accurate or complete and it should not be relied on as such. SIHL or any of its affiliates/ group companies shall not be in any way responsible for any loss or damage that may arise to any person from any error in the information contained in this report or SMS. This Information provided by SMS, reports or in newsletter is provided for assistance only and is not intended to be and must not alone be taken as the basis for an investment decision. The user assumes the entire risk of any use made of this information. Each recipient of this Information provided by SMS, report or in newsletter should make such investigation as it deems necessary to arrive at an independent evaluation of an investment in the securities of companies referred to in this information provided by SMS, report or in newsletter (including the merits and risks involved), and should consult his own advisors to determine the merits and risks of such investment. The investment discussed or views expressed may not be suitable for all investors. This information is strictly confidential and is being furnished to you solely for your information.

The information should not be reproduced or redistributed or passed on directly or indirectly in any form to any other person or published, copied, in whole or in part, for any purpose. The information provided by report or SMS is not directed or intended for distribution to, or use by, any person or entity who is a citizen or resident of or located in any locality, state, country or other jurisdiction, where such distribution, publication, availability or use would be contrary to law, regulation or which would subject SIHL and affiliates/ group companies to any registration or licensing requirements within such jurisdiction. The distribution of this Information provided by SMS or in newsletter in certain jurisdictions may be restricted by law, and persons in whose possession this Information provided by SMS or in newsletter comes, should inform themselves about and observe, any such restrictions. The information given or Information provided by SMS, report or in newsletter is as of the date of the issue date of report or the date on which SMS provided and there can be no assurance that future results or events will be consistent with this information. This information is subject to change without any prior notice. SIHL reserves the right to make modifications and alterations to this statement as may be required from time to time. However, SIHL is under no obligation to update or keep the information current.

Nevertheless, SIHL is committed to providing independent and transparent recommendation to its client and would be happy to provide any information in response to specific client queries. Neither SIHL nor any of its affiliates, group companies, directors, employees, agents or representatives shall be liable for any damages whether direct, indirect, special or consequential including lost revenue or lost profits that may arise from or in connection with the use of the information. Past performance is not necessarily a guide to future performance. The disclosures of interest statements incorporated in the Information provided by SMS, report or in newsletter are provided solely to enhance the transparency and should not be treated as endorsement of the views expressed in the report. The analyst for this report certifies that all of the views expressed in this report accurately reflect his or her personal views about the subject company or companies and its or their securities, and no part of his or her compensation was, is or will be, directly or indirectly related to specific recommendations or views expressed in this report.