



MORNING MANTRA



Daily Derivatives & Market Report

MAR 09, 2022

MARKET COMMENTARY



Indian equity benchmarks ended near day's high points on Wednesday. Markets made a positive start of the day, as sentiments got boost with report that the Agriculture Ministry is ready with a new central scheme to promote natural farming in the country with an estimated outlay of Rs 2,500 crore. The proposed new scheme on natural farming will soon be placed before the Cabinet for approval. Some support came as the Reserve Bank of India (RBI) has extended the interest equalisation scheme for pre and post shipment rupee credit for Ministry of Small and Medium Enterprises (MSME) exporters till March 2024 with the objective of boosting outbound shipments.

Firm trade continued over the Dalal during the trading session. Traders were positive, as Finance Minister Nirmala Sitharaman said the Union budget for 2022-23 was about the philosophy of 'Atmanirbhar Bharat' (self-reliant Bharat) as customs duties were increased on those imported products which are also manufactured in India so that people buy the Indian equivalent. However, duties have not been increased on the products produced within the country. Besides, the Reserve Bank of India (RBI) launched a unified payments interface (UPI) service for feature phones, a move which is expected to give a big boost to digital payment adoption in the country.

Key indices gained traction in the second half of the trading session, after Prime Minister Shri Narendra Modi has approved the setting up National Land Monetization Corporation (NLMC) as a wholly owned Government of India company. With monetization of non-core assets, Government would be able to generate substantial revenues by monetizing unused and under-used assets. Traders overlooked rating agency Icria's report in which it has warned of serious downside risks to the economy in next fiscal (FY23) with runaway current account deficit, steep fall in the rupee and a hardening yields on government bonds, as a result of the Russian-Ukraine crisis and the resultant spike in crude and other commodity prices.

On the global front, European markets were trading higher amid investors continued to monitor surging commodity prices and the ongoing war in Ukraine. Asian markets ended mostly higher, after Japan's gross domestic product expanded an annualized 4.6 percent on year in the fourth quarter of 2021, the Cabinet Office said on Wednesday - well shy of forecasts for a gain of 5.6 percent following the downwardly revised 2.8 percent contraction in the previous three months (originally -2.7 percent). On a seasonally adjusted quarterly basis, GDP was up just 1.1 percent - again missing expectations for 1.4 percent after shrinking 0.7 percent in the three months prior.

MARKET SELFIE



MARKET SUMMARY

Domestic Indices	Close	Points	% Change
SENSEX	54647.33	1223.24	2.29
NIFTY	16345.35	331.90	2.07
MIDCAP	22961.84	530.82	2.37
SMLCAP	26583.64	561.74	2.16
BSEFMC	12711.32	179.74	1.43
AUTO	22439.06	637.36	2.92
POWER	3841.33	-1.05	-0.03
REALTY	3328.54	101.96	3.16
BSE IT	35010.77	514.20	1.49
BANKEX	38720.27	669.16	1.76
OIL GAS	17731.63	45.36	0.26
METAL	21283.79	-148.59	-0.69
INDIA VIX	27.47	-1.12	-3.91

ADVANCE - DECLINE

Index	Advance	Decline	Unchanged
NSE	1717	358	48
BSE	2625	722	88

MARKET TURNOVER (₹ in Crs)

Segment	Current	Previous	Net %
BSE CASH	4812	5171	(7)
NSE CASH	69381	73266	(5)
NSE F&O	8927089	6933091	29

KEY INDICES RATIOS

INDEX	P/E	P/B	Dividend Yield
NIFTY	21.01	4.12	1.28
SENSEX	24.15	3.35	1.02

KEY NUMBERS TRACKER



FII – DII ACTIVITY IN CASH SEGMENT (₹ in Crs)

FII-DII*	Buy	Sell	Net
DII	11078	7802	3276
FII	9371	14190	(4819)

Note: FPI & DII Figures are provisional

FII ACTIVITY IN DERIVATIVES SEGMENT (₹ in Crs)

FII	Buy	Sell	Net
Index Futures	6857.30	6179.45	678
Index Options	384305.97	382947.01	1359
Stock Futures	15596.91	15775.71	(179)
Stock Options	12257.47	12408.54	(151)

PUT-CALL RATIO

Index	Current	Previous
NIFTY	0.92	0.76
BANK NIFTY	0.76	0.56

DOLLAR INDEX

Dollar Index	Current	Previous	% Change
DXY	98.69	99.06	-0.37

10-YEARS G-SEC YIELD

Country	Current	Previous	% Change
INDIA	6.895	6.845	-0.73
USA	1.901	1.871	1.60

KEY COMMODITIES TRACKER (in \$)

Commodity	Current	Change Points	% Change
Gold	2014.01	-29.81	-1.44
Silver	26.14	-0.32	-1.21
Crude-Oil	119.77	-3.93	-3.18
Brent-Crude	123.72	-4.25	-3.32

CURRENCY FUTURES & INDEX TRENDS TRACKER



CURRENCY FUTURES

Expiry	Close	Change Points	% Change
29 MAR -22 USD-INR	76.83	-0.31	-0.40
29 MAR-22 EUR-INR	84.21	0.05	0.06
29 MAR-22 GBP-INR	101.16	-0.08	-0.07
29 MAR-22 JPY- INR	66.27	-0.39	-0.59

INDICES – SUPPORT-RESISTANCE-PIVOT LEVELS

Index	Close	S2	S1	Pivot	R1	R2
NIFTY	16345	15823	16084	16251	16512	16679
SENSEX	54647	52777	53712	54303	55238	55829
NIFTY FUTURES	16385	15795	16090	16256	16551	16717
BANK NIFTY	33815	32557	33186	33578	34207	34599
CNX IT	35441	34868	35154	35440	35726	36012
CNX MIDCAP	27786	27109	27447	27665	28003	28220
CNX SMALLCAP	9928	9707	9817	9884	9994	10061
INDIA VIX	27.47	26.50	26.98	27.79	28.27	29.08

INDEX TREND ANALYSIS

Index	Daily	Weekly	Monthly
NIFTY	Neutral	Neutral	Neutral
SENSEX	Neutral	Neutral	Neutral
NIFTY FUTURES	Neutral	Neutral	Neutral
BANK NIFTY	Sell	Neutral	Neutral
CNX IT	Neutral	Neutral	Neutral
CNX MIDCAP	Neutral	Neutral	Neutral
CNX SMALLCAP	Neutral	Neutral	Neutral
INDIA VIX	Neutral	Buy	Buy

SECURITIES BAN IN F&O TRADES FOR 10-03-2022

NIL

TECHNICAL VIEWS



NIFTY

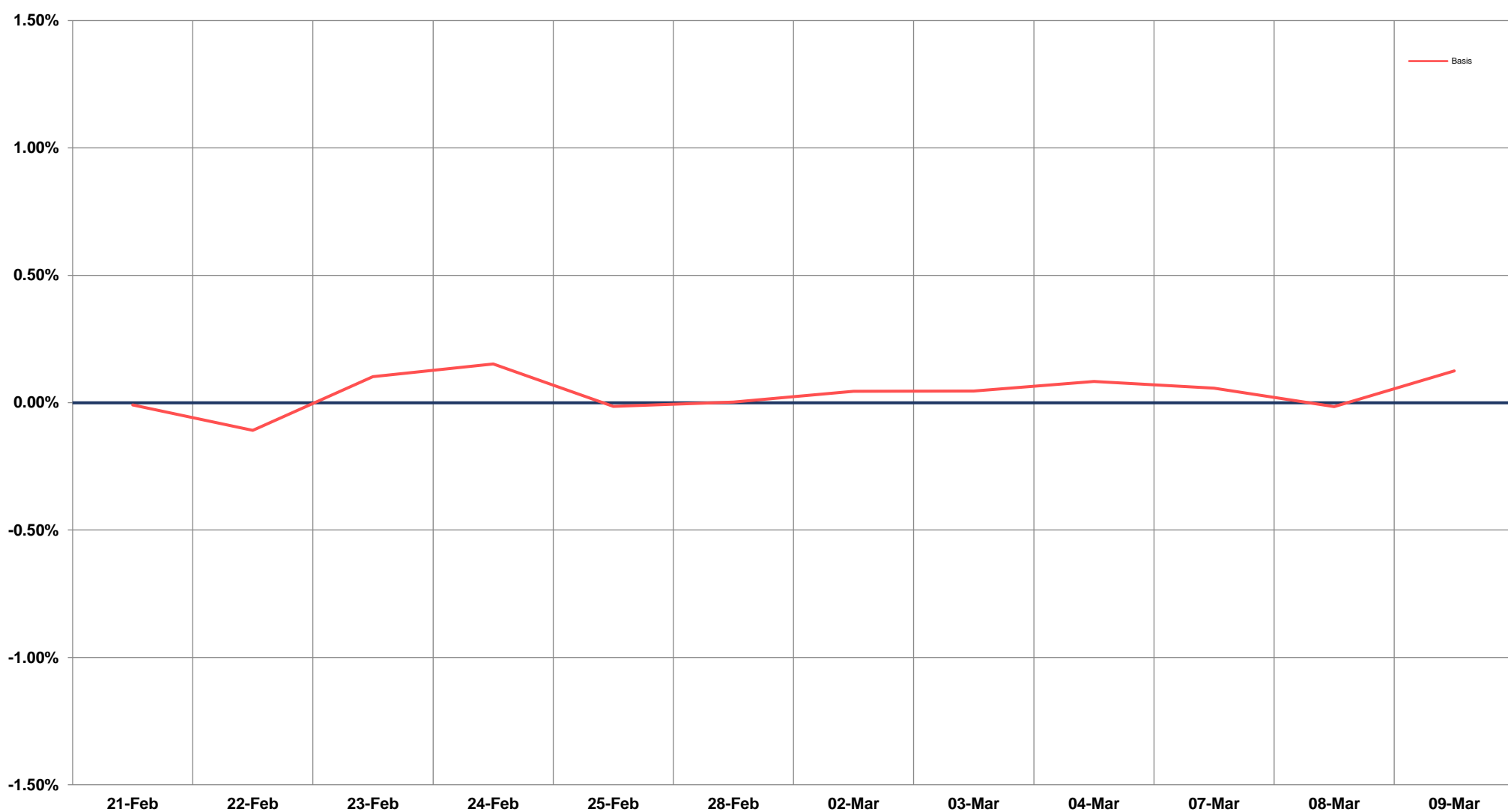
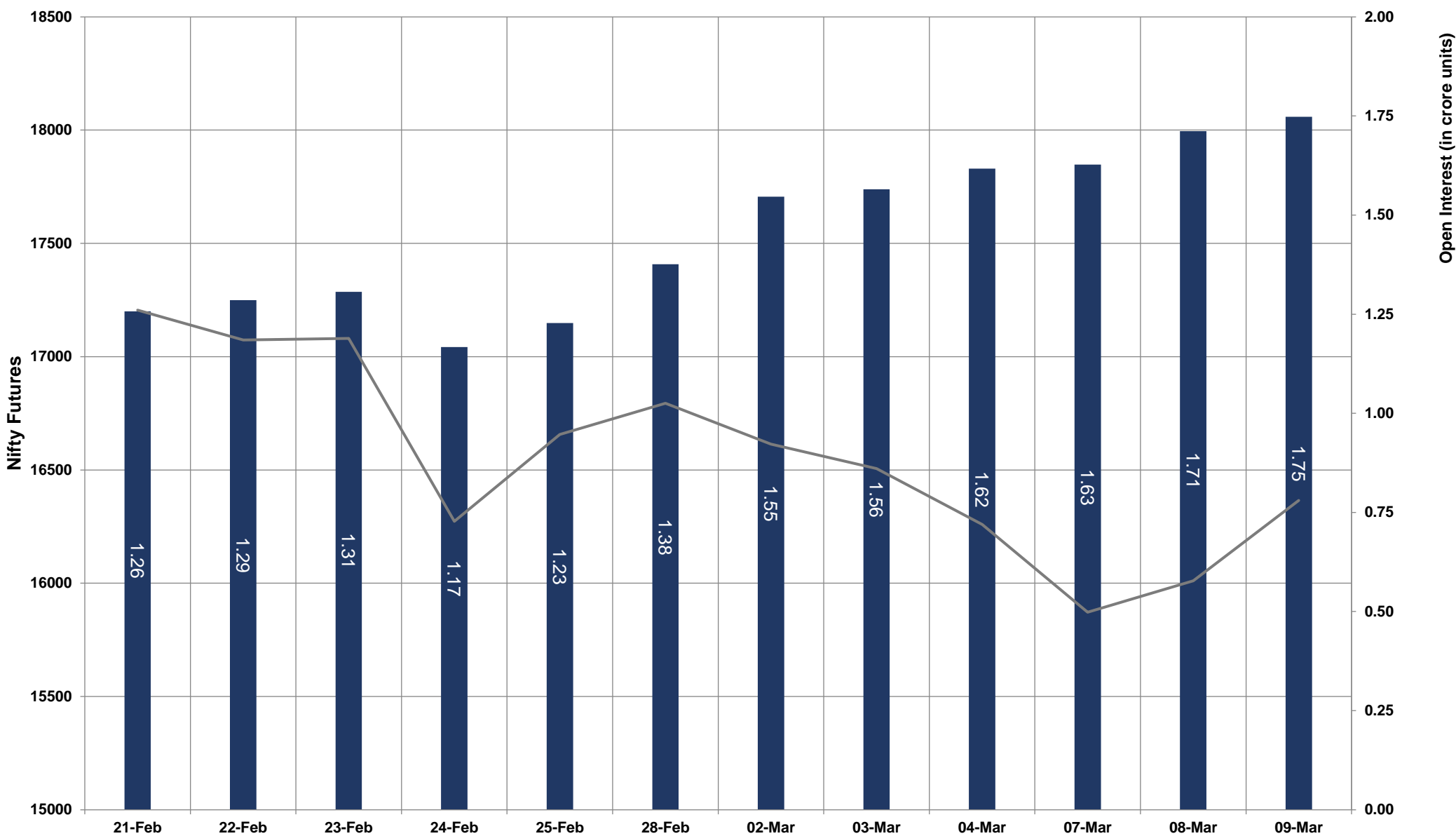


- Nifty Cash = **16345.35 (2.07%)**
- Resistance levels = **16510** and **16635**
- Support levels = **16240** and **16130**

TECHNICAL VIEWS



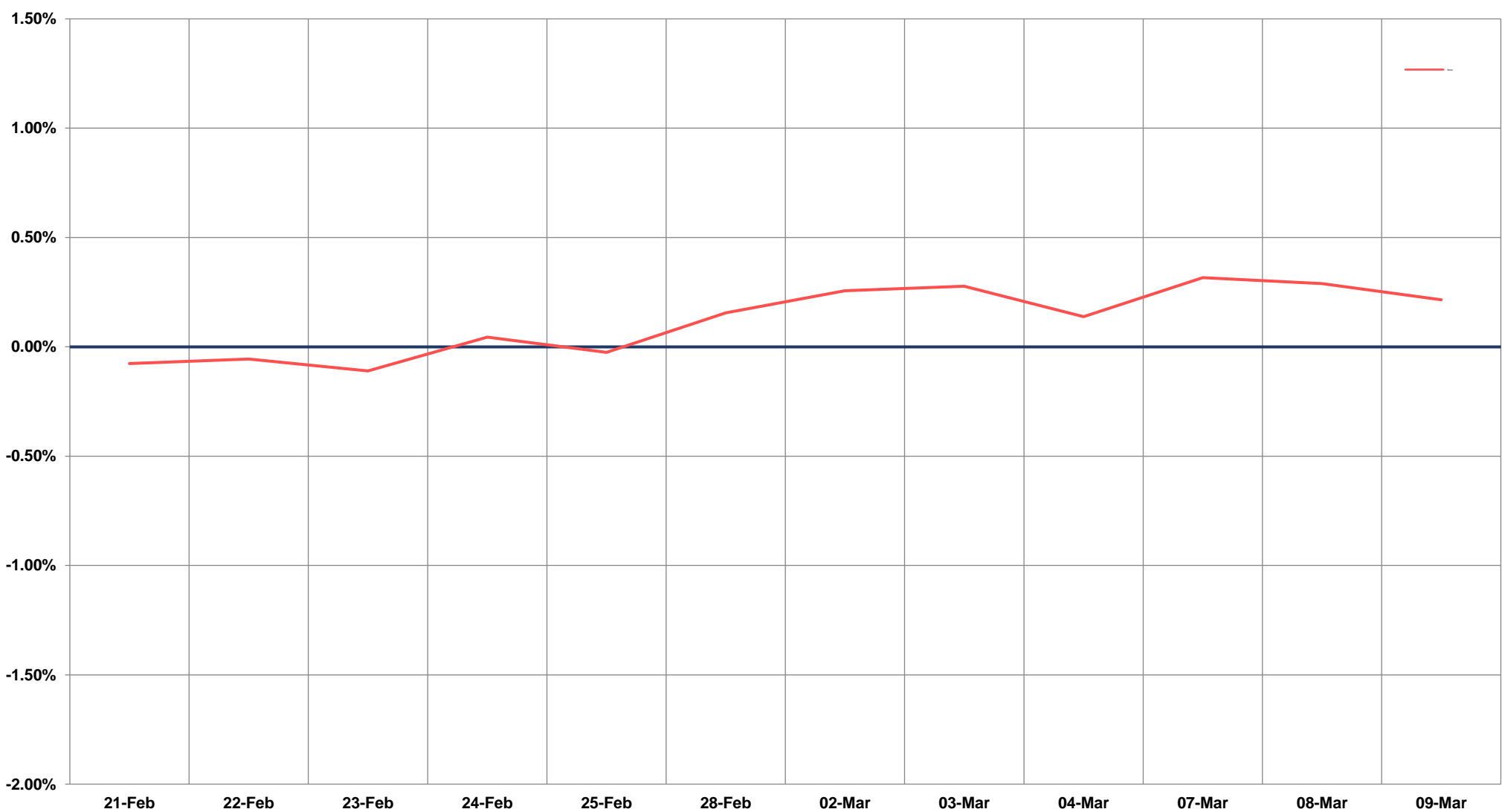
NIFTY FUTURES



TECHNICAL VIEWS



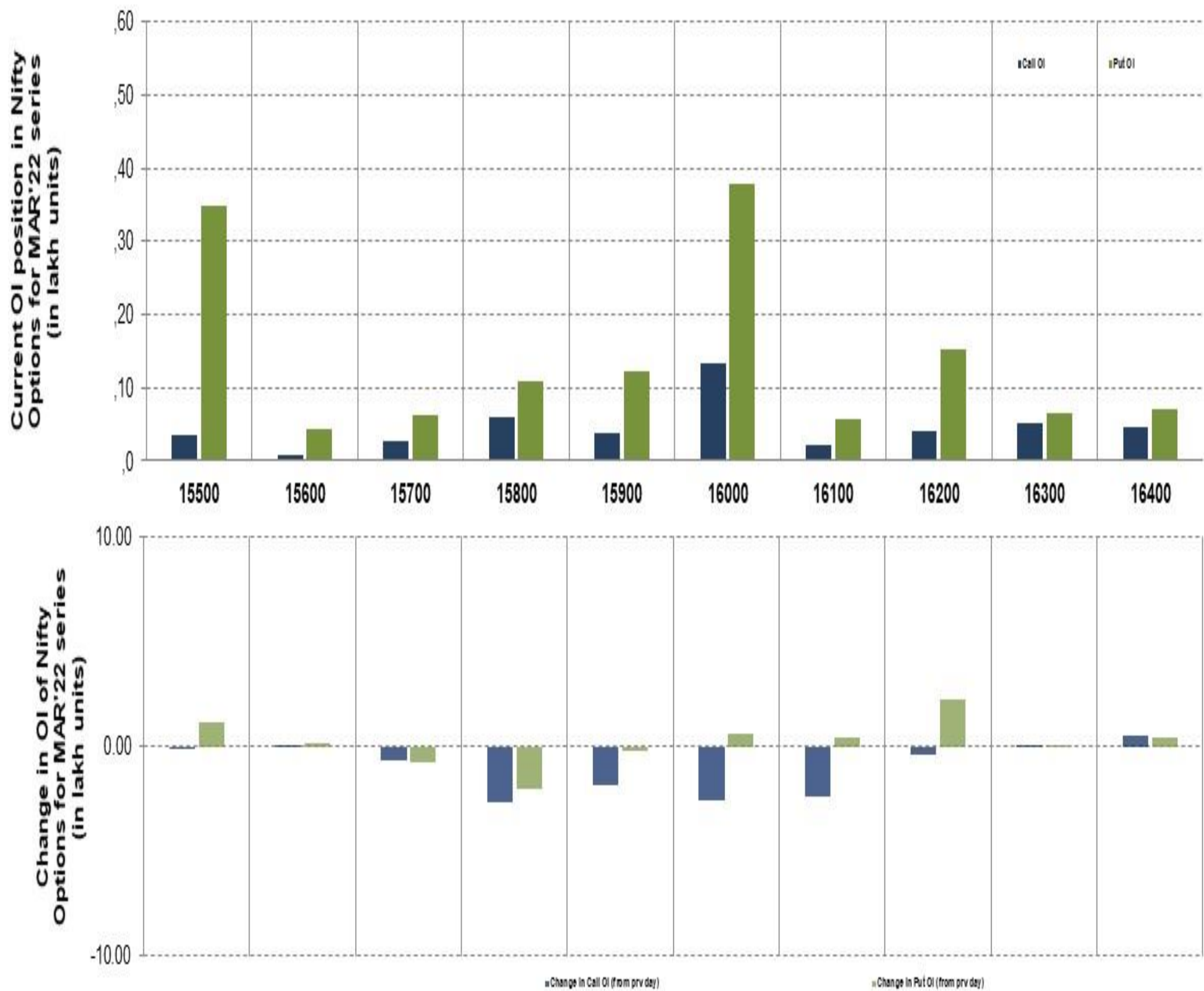
BANK NIFTY FUTURES



TECHNICAL VIEWS



NIFTY OPTIONS



- **Most Active Nifty Call** with a reduction of **0.25 million** in Open Interests is **Strike Price of 16000**
- **Most Active Nifty Put** with an addition of **0.22 millions** in Open Interests is **Strike Price of 16200**
- **Maximum Open Interest an outstanding** was **1.33 millions** for Calls at **Strike Price of 16000**
- **Maximum Open Interest an outstanding** was **3.78 millions** for Puts at **Strike Price of 16000**

Disclaimer



The Information provided by SMS or in newsletter or in any document has been prepared by Shah Investor's Home Ltd (SIHL). The Information provided by SMS or in newsletter does not constitute an offer or solicitation for the purchase or sale of any financial instrument or as an official confirmation of any transaction. The information contained herein is from publicly available data or other sources believed to be reliable, but we do not represent that it is accurate or complete and it should not be relied on as such. SIHL or any of its affiliates/ group companies shall not be in any way responsible for any loss or damage that may arise to any person from any error in the information contained in this report or SMS. This Information provided by SMS, reports or in newsletter is provided for assistance only and is not intended to be and must not alone be taken as the basis for an investment decision. The user assumes the entire risk of any use made of this information. Each recipient of this Information provided by SMS, report or in newsletter should make such investigation as it deems necessary to arrive at an independent evaluation of an investment in the securities of companies referred to in this information provided by SMS, report or in newsletter (including the merits and risks involved), and should consult his own advisors to determine the merits and risks of such investment. The investment discussed or views expressed may not be suitable for all investors. This information is strictly confidential and is being furnished to you solely for your information.

The information should not be reproduced or redistributed or passed on directly or indirectly in any form to any other person or published, copied, in whole or in part, for any purpose. The information provided by report or SMS is not directed or intended for distribution to, or use by, any person or entity who is a citizen or resident of or located in any locality, state, country or other jurisdiction, where such distribution, publication, availability or use would be contrary to law, regulation or which would subject SIHL and affiliates/ group companies to any registration or licensing requirements within such jurisdiction. The distribution of this Information provided by SMS or in newsletter in certain jurisdictions may be restricted by law, and persons in whose possession this Information provided by SMS or in newsletter comes, should inform themselves about and observe, any such restrictions. The information given or Information provided by SMS, report or in newsletter is as of the date of the issue date of report or the date on which SMS provided and there can be no assurance that future results or events will be consistent with this information. This information is subject to change without any prior notice. SIHL reserves the right to make modifications and alterations to this statement as may be required from time to time. However, SIHL is under no obligation to update or keep the information current.

Nevertheless, SIHL is committed to providing independent and transparent recommendation to its client and would be happy to provide any information in response to specific client queries. Neither SIHL nor any of its affiliates, group companies, directors, employees, agents or representatives shall be liable for any damages whether direct, indirect, special or consequential including lost revenue or lost profits that may arise from or in connection with the use of the information. Past performance is not necessarily a guide to future performance. The disclosures of interest statements incorporated in the Information provided by SMS, report or in newsletter are provided solely to enhance the transparency and should not be treated as endorsement of the views expressed in the report. The analyst for this report certifies that all of the views expressed in this report accurately reflect his or her personal views about the subject company or companies and its or their securities, and no part of his or her compensation was, is or will be, directly or indirectly related to specific recommendations or views expressed in this report.