



MORNING MANTRA



Daily Derivatives & Market Report

MAR 21, 2022



Indian equity benchmarks ended near their intraday low points on Monday. The start of the day was on a positive note, as CBDT Chairman J B Mohapatra has stated the Income Tax (I-T) department has made the 'highest' tax collection in its history, when the direct tax mop up jumped over 48 per cent in the current fiscal backed by a 41 per cent surge in advance tax payments. He said the net collection numbers as on until March 16, 2022 is Rs 13.63 lakh crore against Rs 11.18 lakh crore of 2018-19, Rs 10.28 lakh crore of 2019-20 and Rs 9.24 lakh crore of 2020-21.

But soon, markets turned negative, as according to the latest data from the RBI, the country's foreign exchange reserves declined \$9.646 billion to \$622.275 billion in the week ended March 11. Adding pessimism, retail inflation for farm workers and rural labourers rose to 5.59 per cent and 5.94 per cent respectively in February, mainly due to higher prices of certain food items. Traders remained concerned with Former finance minister Yashwant Sinha's statement that huge expenditure on welfare schemes by the Modi government has severely impacted the public finances which are currently in a mess with fiscal deficit touching abnormally high levels.

In the second half of the trading session, indices added more losses, amid reports that consumers may have to pay more for their daily essential items with FMCG companies mulling another round of price hike to offset the impact of an unprecedented level of inflation in commodity prices such as wheat, palm oil and packaging materials. Besides, the ongoing war between Russia and Ukraine has also added another blow to FMCG makers as they expect a rise in the prices of wheat, edible oil and crude. The street overlooked the latest payroll data report stating that retirement fund body EPFO added 15.29 lakh subscribers on a net basis in January 2022, an increase of over 21 per cent compared to 12.60 lakh in December 2021.

On the global front, European markets were trading higher helped by gains in energy stocks. Asian markets ended mostly higher on Monday, even after Japan's tertiary activity dropped for the first time in five months in January. The data from the Ministry of Economy, Trade and Industry showed that the tertiary activity index declined 0.7 percent month-on-month in January, after a 0.1 percent increase in December. Back home, sugar industry stocks remained in focus as industry body ISMA said sugar exports have jumped over 2.5 fold between October 2021 and February this year to 47 lakh tonnes on higher production and better demand of the Indian sweetener in the global market.

MARKET SELFIE



MARKET SUMMARY

Domestic Indices	Close	Points	% Change
SENSEX	57292.49	-571.44	-0.99
NIFTY	17117.60	-169.49	-0.98
MIDCAP	23661.79	-162.82	-0.68
SMLCAP	27811.06	104.74	0.38
BSEFMC	13300.08	-196.44	-1.46
AUTO	23848.65	-238.58	-0.99
POWER	3889.10	-71.56	-1.81
REALTY	3555.46	-24.26	-0.68
BSE IT	35358.27	-204.61	-0.58
BANKEX	41228.97	-544.38	-1.30
OIL GAS	18047.72	-161.01	-0.88
METAL	22107.45	369.88	1.70
INDIA VIX	24.62	2.01	8.89

ADVANCE - DECLINE

Index	Advance	Decline	Unchanged
NSE	877	1217	65
BSE	1550	1971	149

MARKET TURNOVER (₹ in Crs)

Segment	Current	Previous	Net %
BSE CASH	3992	4160	(4)
NSE CASH	59100	86148	(31)
NSE F&O	5001856	16776456	(70)

KEY INDICES RATIOS

INDEX	P/E	P/B	Dividend Yield
NIFTY	22.01	4.31	1.21
SENSEX	25.18	3.49	0.98

KEY NUMBERS TRACKER



FII – DII ACTIVITY IN CASH SEGMENT (₹ in Crs)

FII-DII*	Buy	Sell	Net
DII	4611	4358	253
FII	6839	9801	(2962)

Note: FPI & DII Figures are provisional

FII ACTIVITY IN DERIVATIVES SEGMENT (₹ in Crs)

FII	Buy	Sell	Net
Index Futures	3297.39	3848.76	(551)
Index Options	317933.52	312706.64	5227
Stock Futures	11732.71	12966.50	(1234)
Stock Options	22439.73	22536.93	(97)

PUT-CALL RATIO

Index	Current	Previous
NIFTY	0.87	1.24
BANK NIFTY	0.69	1.09

DOLLAR INDEX

Dollar Index	Current	Previous	% Change
DXY	98.22	97.97	0.26

10-YEARS G-SEC YIELD

Country	Current	Previous	% Change
INDIA	6.785	6.778	0.10
USA	2.183	2.148	1.65

KEY COMMODITIES TRACKER (in \$)

Commodity	Current	Change Points	% Change
Gold	1926.45	6.44	0.34
Silver	25.04	0.15	0.62
Crude-Oil	109.32	4.62	4.41
Brent-Crude	112.75	4.81	4.48

CURRENCY FUTURES & INDEX TRENDS TRACKER



CURRENCY FUTURES

Expiry	Close	Change Points	% Change
29 MAR -22 USD-INR	76.28	0.42	0.55
29 MAR-22 EUR-INR	84.20	0.28	0.33
29 MAR-22 GBP-INR	100.19	0.07	0.06
29 MAR-22 JPY- INR	64.08	0.01	0.01

INDICES – SUPPORT-RESISTANCE-PIVOT LEVELS

Index	Close	S2	S1	Pivot	R1	R2
NIFTY	17118	16932	17025	17189	17282	17446
SENSEX	57292	56651	56972	57550	57871	58449
NIFTY FUTURES	17168	16969	17068	17230	17330	17492
BANK NIFTY	36019	35473	35746	36173	36446	36873
CNX IT	35378	34768	35073	35604	35909	36441
CNX MIDCAP	28896	28668	28782	28976	29090	29284
CNX SMALLCAP	10303	10203	10253	10317	10367	10432
INDIA VIX	24.62	21.88	23.25	23.98	25.35	26.08

INDEX TREND ANALYSIS

Index	Daily	Weekly	Monthly
NIFTY	Neutral	Buy	Neutral
SENSEX	Neutral	Buy	Neutral
NIFTY FUTURES	Neutral	Buy	Neutral
BANK NIFTY	Neutral	Neutral	Neutral
CNX IT	Neutral	Buy	Neutral
CNX MIDCAP	Neutral	Neutral	Neutral
CNX SMALLCAP	Neutral	Neutral	Neutral
INDIA VIX	Neutral	Neutral	Buy

SECURITIES BAN IN F&O TRADES FOR 22-03-2022

BALRAMCHIN, DELTACORP, IBULHSGFIN

TECHNICAL VIEWS



NIFTY

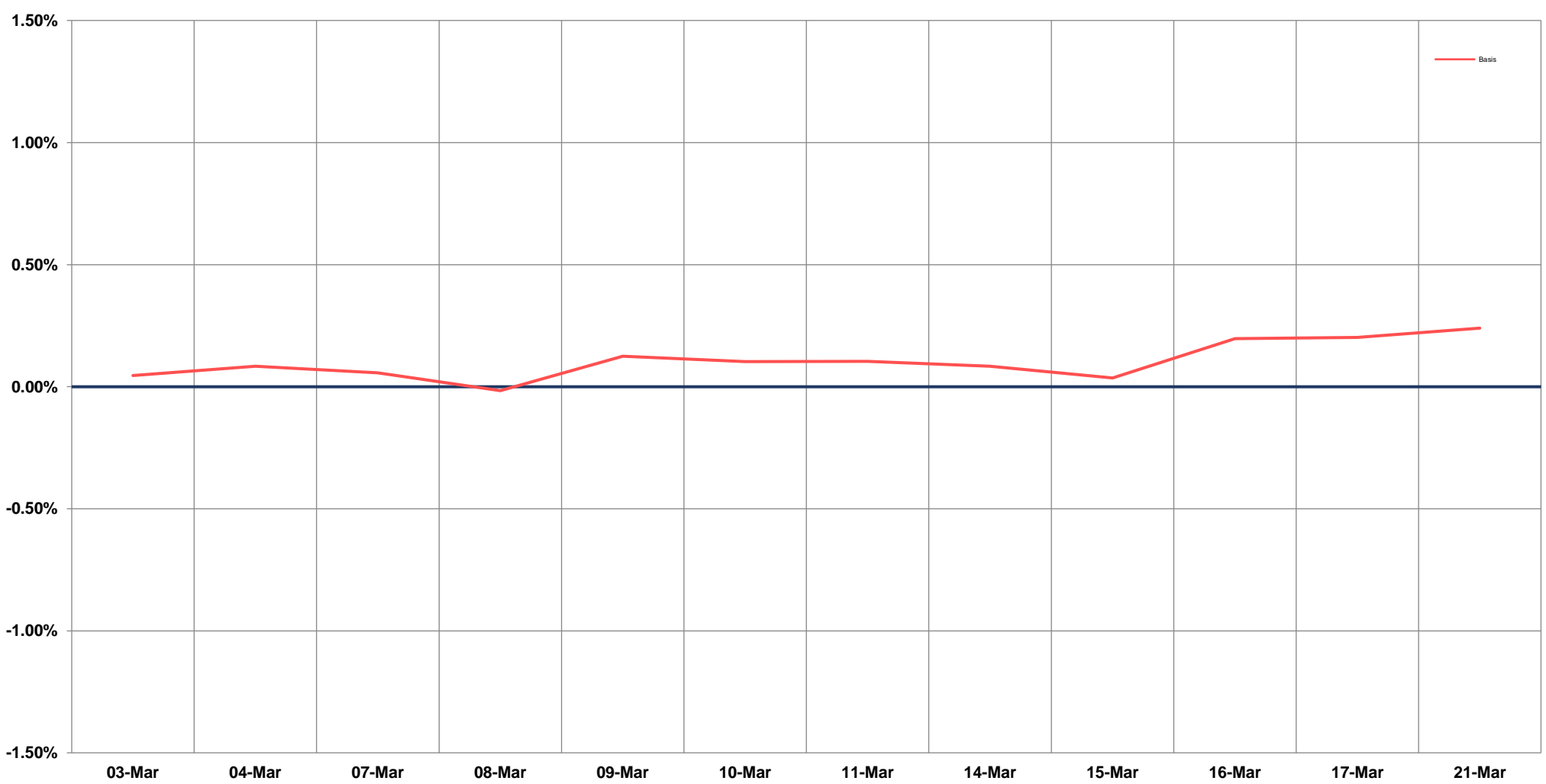
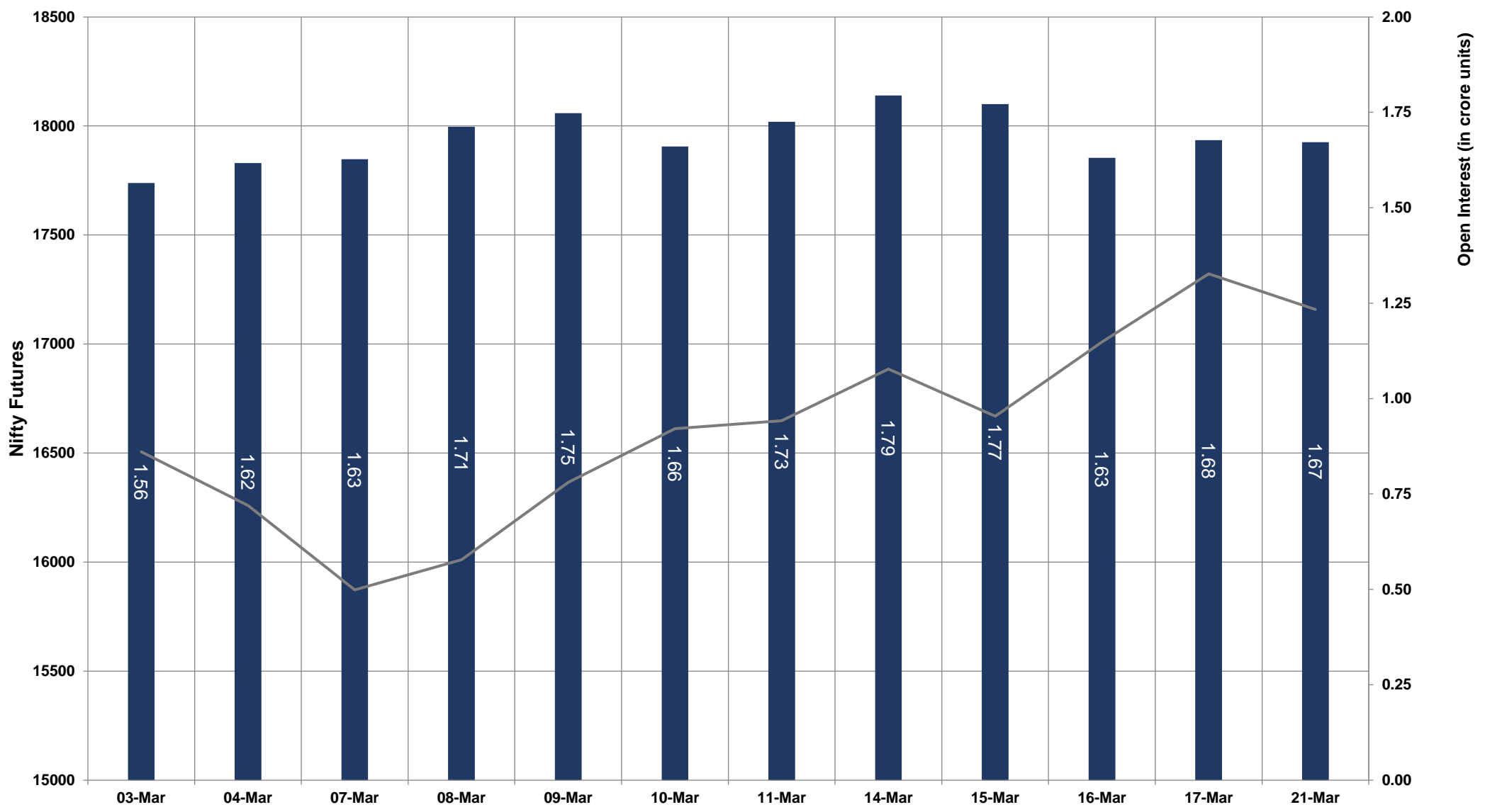


- Nifty Cash = 17117.60 (1.84%)
- Resistance levels = 17310 and 17470
- Support levels = 17060 and 16950

TECHNICAL VIEWS



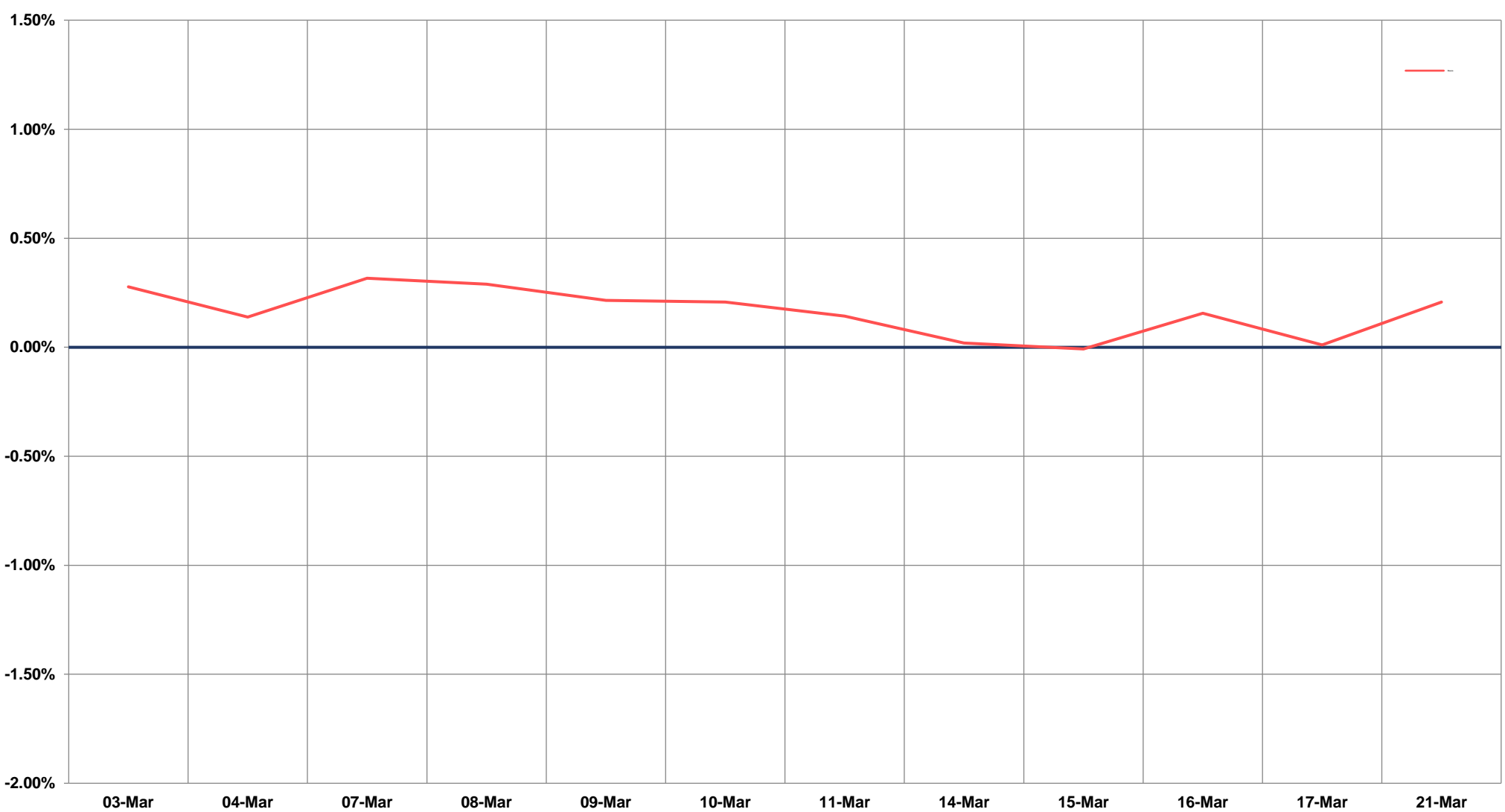
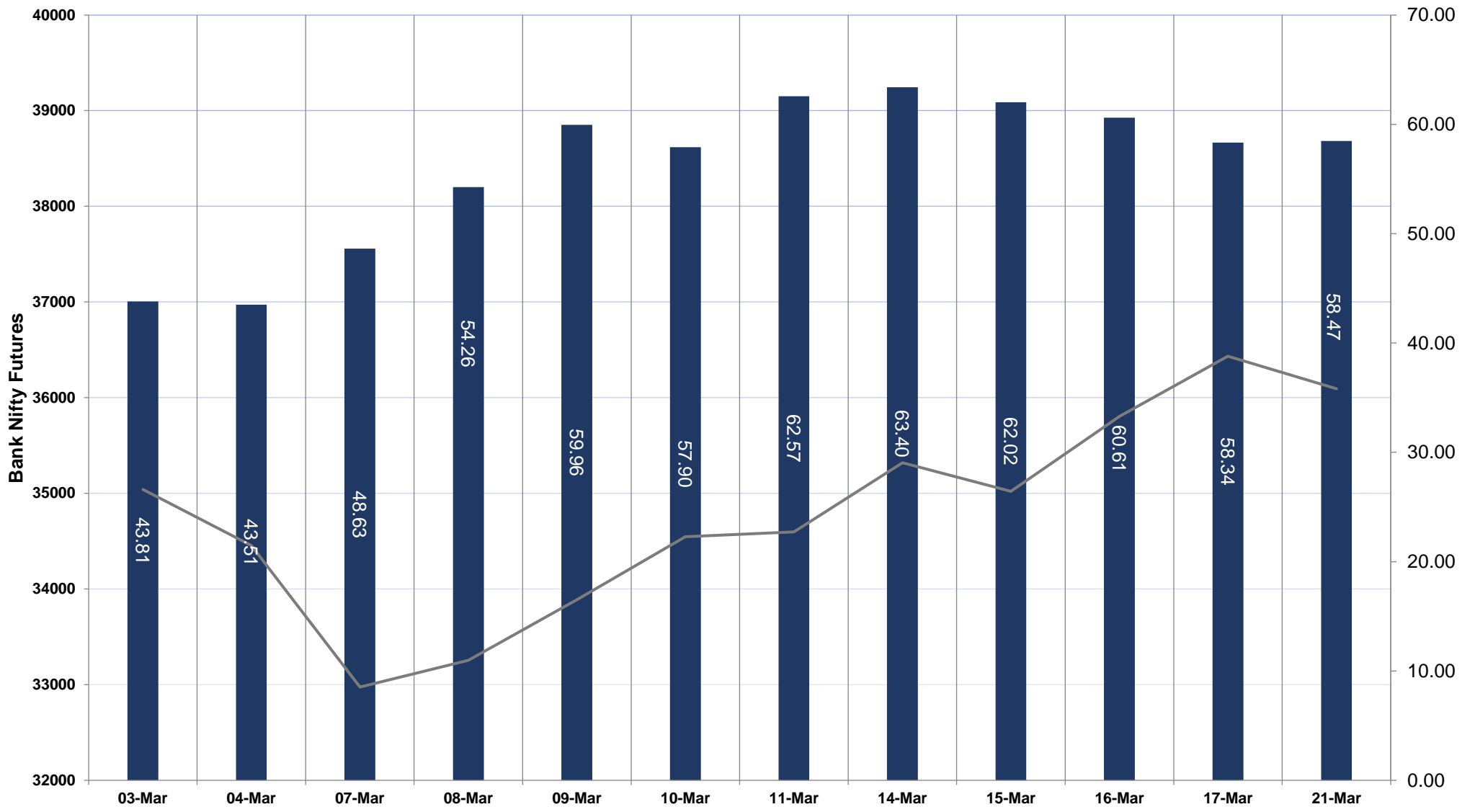
NIFTY FUTURES



TECHNICAL VIEWS



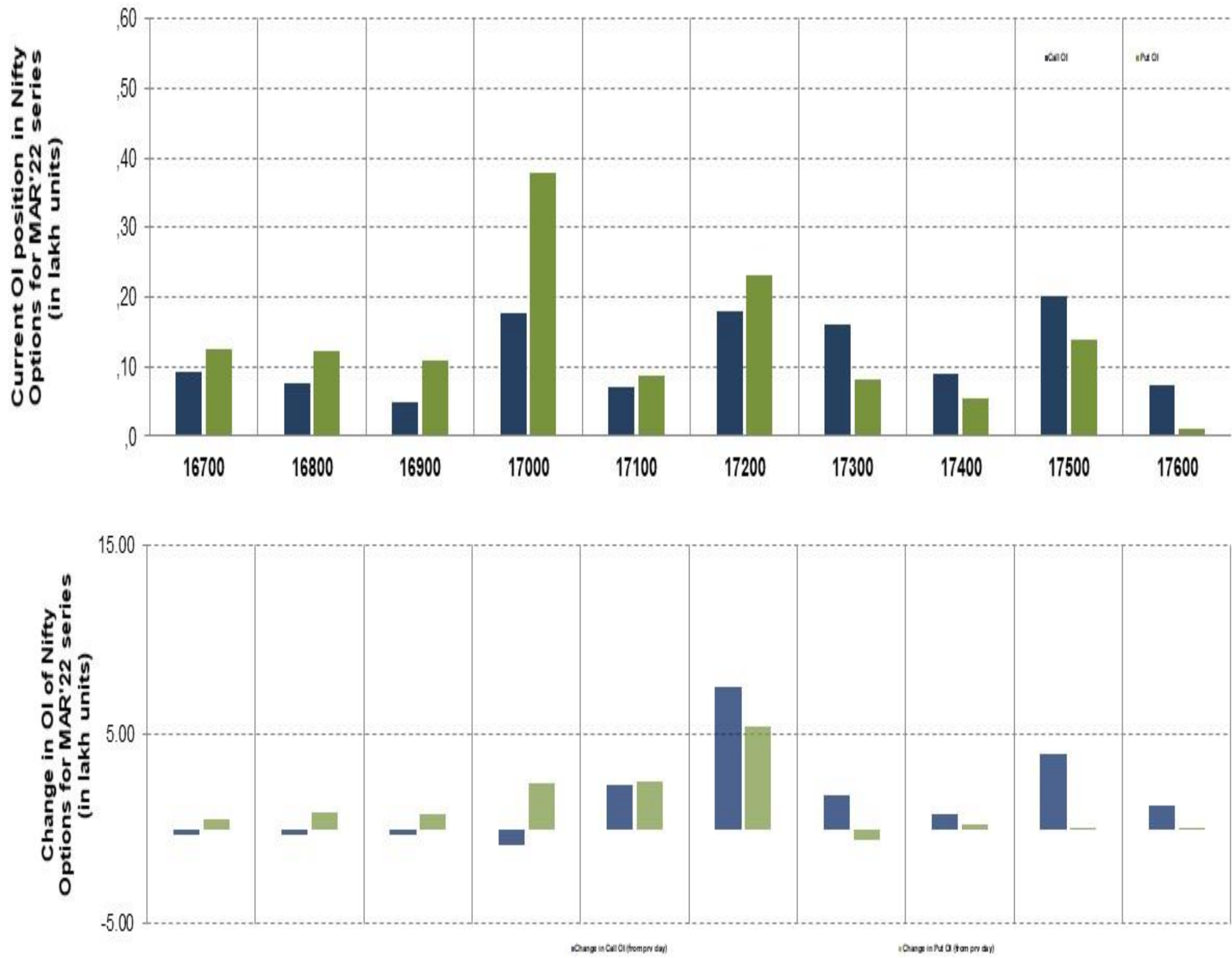
BANK NIFTY FUTURES



TECHNICAL VIEWS



NIFTY OPTIONS



- **Most Active Nifty Call** with an addition of **0.75 million** in Open Interests is **Strike Price of 17200**
- **Most Active Nifty Put** with an addition of **0.54 millions** in Open Interests is **Strike Price of 17200**
- **Maximum Open Interest an outstanding** was **1.99 millions** for Calls at **Strike Price of 17500**
- **Maximum Open Interest an outstanding** was **3.78 millions** for Puts at **Strike Price of 17000**

Disclaimer



The Information provided by SMS or in newsletter or in any document has been prepared by Shah Investor's Home Ltd (SIHL). The Information provided by SMS or in newsletter does not constitute an offer or solicitation for the purchase or sale of any financial instrument or as an official confirmation of any transaction. The information contained herein is from publicly available data or other sources believed to be reliable, but we do not represent that it is accurate or complete and it should not be relied on as such. SIHL or any of its affiliates/ group companies shall not be in any way responsible for any loss or damage that may arise to any person from any error in the information contained in this report or SMS. This Information provided by SMS, reports or in newsletter is provided for assistance only and is not intended to be and must not alone be taken as the basis for an investment decision. The user assumes the entire risk of any use made of this information. Each recipient of this Information provided by SMS, report or in newsletter should make such investigation as it deems necessary to arrive at an independent evaluation of an investment in the securities of companies referred to in this information provided by SMS, report or in newsletter (including the merits and risks involved), and should consult his own advisors to determine the merits and risks of such investment. The investment discussed or views expressed may not be suitable for all investors. This information is strictly confidential and is being furnished to you solely for your information.

The information should not be reproduced or redistributed or passed on directly or indirectly in any form to any other person or published, copied, in whole or in part, for any purpose. The information provided by report or SMS is not directed or intended for distribution to, or use by, any person or entity who is a citizen or resident of or located in any locality, state, country or other jurisdiction, where such distribution, publication, availability or use would be contrary to law, regulation or which would subject SIHL and affiliates/ group companies to any registration or licensing requirements within such jurisdiction. The distribution of this Information provided by SMS or in newsletter in certain jurisdictions may be restricted by law, and persons in whose possession this Information provided by SMS or in newsletter comes, should inform themselves about and observe, any such restrictions. The information given or Information provided by SMS, report or in newsletter is as of the date of the issue date of report or the date on which SMS provided and there can be no assurance that future results or events will be consistent with this information. This information is subject to change without any prior notice. SIHL reserves the right to make modifications and alterations to this statement as may be required from time to time. However, SIHL is under no obligation to update or keep the information current.

Nevertheless, SIHL is committed to providing independent and transparent recommendation to its client and would be happy to provide any information in response to specific client queries. Neither SIHL nor any of its affiliates, group companies, directors, employees, agents or representatives shall be liable for any damages whether direct, indirect, special or consequential including lost revenue or lost profits that may arise from or in connection with the use of the information. Past performance is not necessarily a guide to future performance. The disclosures of interest statements incorporated in the Information provided by SMS, report or in newsletter are provided solely to enhance the transparency and should not be treated as endorsement of the views expressed in the report. The analyst for this report certifies that all of the views expressed in this report accurately reflect his or her personal views about the subject company or companies and its or their securities, and no part of his or her compensation was, is or will be, directly or indirectly related to specific recommendations or views expressed in this report.