



# MORNING MANTRA



Daily Derivatives & Market Report

MAR 28, 2022



Indian equity benchmarks managed to end in green terrain on Monday. After a cautious start, markets witnessed a sharp deep and remained lower in the first half of the trading session, as India's foreign exchange (forex) reserves dipped by \$2.59 billion in the week ended March 18, recording a sharp drop for the second consecutive week as the Reserve Bank of India (RBI) heavily sold dollars to prevent slide in the value of rupee.

Traders remained concerned with the depositories data report showing that overseas investors have pulled out a net Rs 1,14,855.97 crore from the Indian markets in the current year so far, amid heightened geopolitical tensions and inflation concerns. Foreign portfolio investors have sold domestic equities worth Rs 48,261.65 crore so far this month, taking the year-to-date tally this year to a massive Rs 1,14,855.97 crore.

Bears held a tight grip over the Dalal Street in the first half, as traders got worried, after the head of the International Monetary Fund is warning that the global economic strain caused by Russia's war in Ukraine could stoke civil unrest in the Middle East and beyond. Besides, a private report stated that Indian consumers are showing cautious optimism and balancing non-discretionary spending as they are saving more for the future.

In the second half, key indices cut losses, taking support Niti Aayog Vice-Chairman Rajiv Kumar's statement that India can double its economy in about 7-8 years if it grows at 8 per cent, which is feasible as the country has sustained a growth rate of 8.5 per cent earlier for a long time. Besides, Credit rating agency, India Ratings and Research (Ind-Ra) in its latest report has maintained an improving outlook for the mid-corporate (MEC) sector for FY23.

On the global front, European markets were trading higher led by interest rate-sensitive banks and insurers as government bond yields continued to rise, while hopes of a peace deal in the Ukraine crisis further aided sentiment. Asian markets ended mixed, even after Malaysia's consumer prices inflation eased in February, defying expectations for further acceleration. The data from the Department of Statistics showed that consumer prices rose 2.2 percent yearly in February, after a 2.3 percent growth in the January.

# MARKET SELFIE



## MARKET SUMMARY

Domestic Indices	Close	Points	% Change
SENSEX	57593.49	231.29	0.40
NIFTY	17222.00	69.00	0.40
MIDCAP	23695.92	-93.99	-0.40
SMLCAP	27653.23	-147.37	-0.53
BSEFMC	13112.59	44.65	0.34
AUTO	23783.74	137.02	0.58
POWER	4013.72	17.14	0.43
REALTY	3581.25	14.79	0.41
BSE IT	35984.19	-138.60	-0.38
BANKEX	40962.02	410.51	1.01
OIL GAS	18895.57	199.98	1.07
METAL	23090.31	161.56	0.70
INDIA VIX	22.61	-0.82	-3.50

## ADVANCE - DECLINE

Index	Advance	Decline	Unchanged
NSE	658	1449	50
BSE	1173	2334	157

## MARKET TURNOVER (₹ in Crs)

Segment	Current	Previous	Net %
BSE CASH	4870	4966	(2)
NSE CASH	59101	58646	1
NSE F&O	5860904	4119090	42

## KEY INDICES RATIOS

INDEX	P/E	P/B	Dividend Yield
NIFTY	22.14	4.34	1.19
SENSEX	25.38	3.52	0.97

# KEY NUMBERS TRACKER



## FII – DII ACTIVITY IN CASH SEGMENT (₹ in Crs)

FII-DII*	Buy	Sell	Net
DII	5324	4162	1162
FII	6114	6916	(801)

Note: FPI & DII Figures are provisional

## FII ACTIVITY IN DERIVATIVES SEGMENT (₹ in Crs)

FII	Buy	Sell	Net
Index Futures	6419.96	5066.56	1353
Index Options	390968.03	389162.12	1806
Stock Futures	43000.58	43505.34	(505)
Stock Options	28449.00	27674.47	775

## PUT-CALL RATIO

Index	Current	Previous
NIFTY	0.94	0.94
BANK NIFTY	0.81	0.68

## DOLLAR INDEX

Dollar Index	Current	Previous	% Change
DXY	99.26	98.84	0.42

## 10-YEARS G-SEC YIELD

Country	Current	Previous	% Change
INDIA	6.839	6.811	0.41
USA	2.481	2.493	-0.49

## KEY COMMODITIES TRACKER (in \$)

Commodity	Current	Change Points	% Change
Gold	1929.82	-26.81	-1.36
Silver	24.99	-0.44	-1.74
Crude-Oil	107.49	-6.41	-5.63
Brent-Crude	114.09	-6.58	-5.45

# CURRENCY FUTURES & INDEX TRENDS TRACKER



## CURRENCY FUTURES

Expiry	Close	Change Points	% Change
29 MAR -22 USD-INR	76.17	-0.05	-0.06
29 MAR-22 EUR-INR	83.75	-0.25	-0.30
29 MAR-22 GBP-INR	100.11	-0.42	-0.42
29 MAR-22 JPY- INR	61.96	-1.18	-1.87

## INDICES – SUPPORT-RESISTANCE-PIVOT LEVELS

Index	Close	S2	S1	Pivot	R1	R2
NIFTY	17222	16922	17072	17154	17303	17385
SENSEX	57593	56539	57066	57352	57880	58166
NIFTY FUTURES	17276	16937	17107	17195	17364	17453
BANK NIFTY	35711	34745	35228	35499	35982	36254
CNX IT	36026	35430	35728	35968	36266	36506
CNX MIDCAP	29221	28737	28979	29217	29460	29698
CNX SMALLCAP	10230	10062	10146	10257	10341	10452
INDIA VIX	22.61	17.52	20.06	22.14	24.68	26.76

## INDEX TREND ANALYSIS

Index	Daily	Weekly	Monthly
NIFTY	Buy	Buy	Neutral
SENSEX	Buy	Buy	Neutral
NIFTY FUTURES	Buy	Buy	Neutral
BANK NIFTY	Neutral	Sell	Neutral
CNX IT	Buy	Buy	Neutral
CNX MIDCAP	Buy	Neutral	Neutral
CNX SMALLCAP	Neutral	Neutral	Neutral
INDIA VIX	Neutral	Neutral	Buy

## SECURITIES BAN IN F&O TRADES FOR 29-03-2022

IDEA, PVR, SUNTV

# TECHNICAL VIEWS



## NIFTY

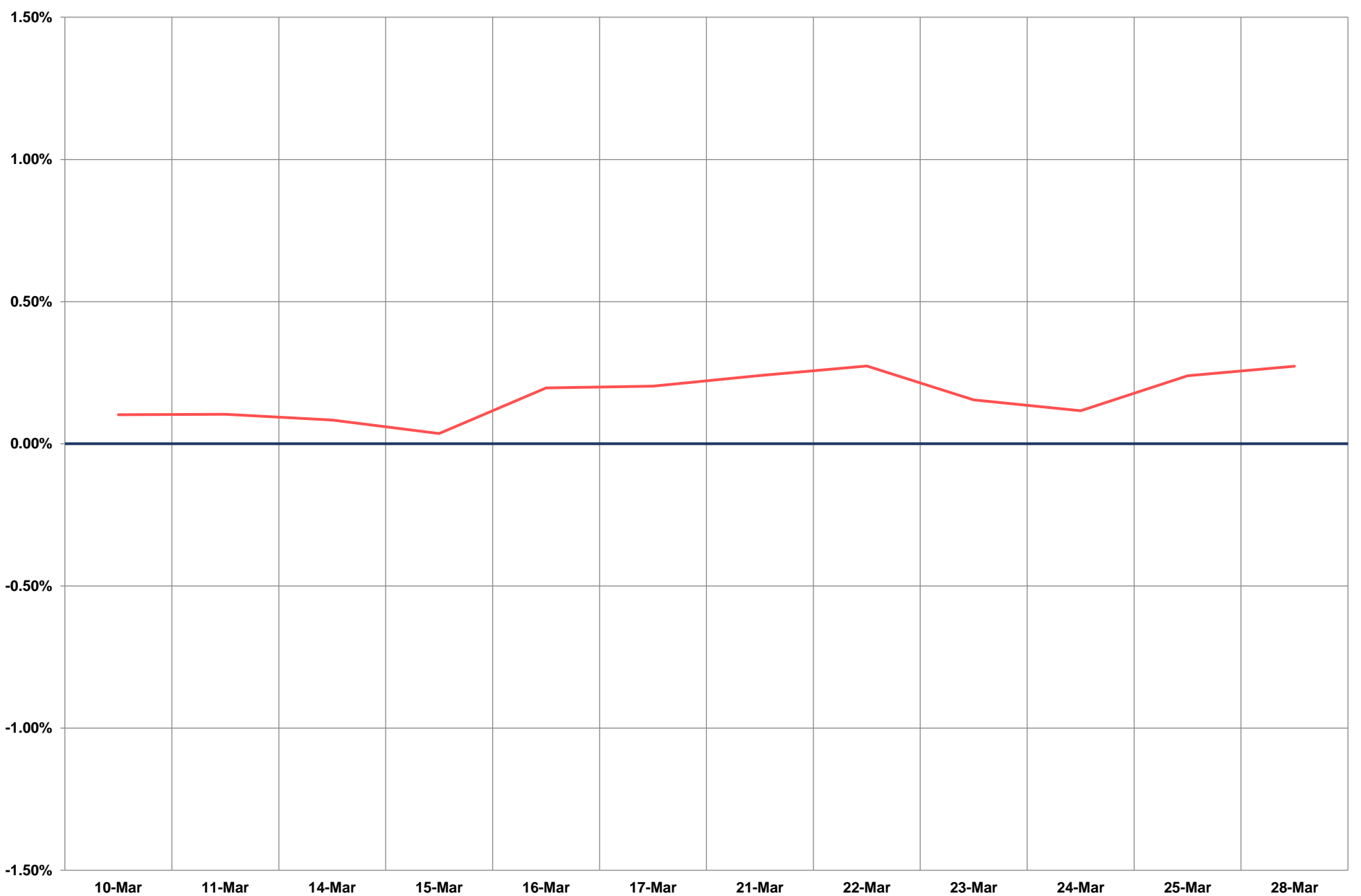
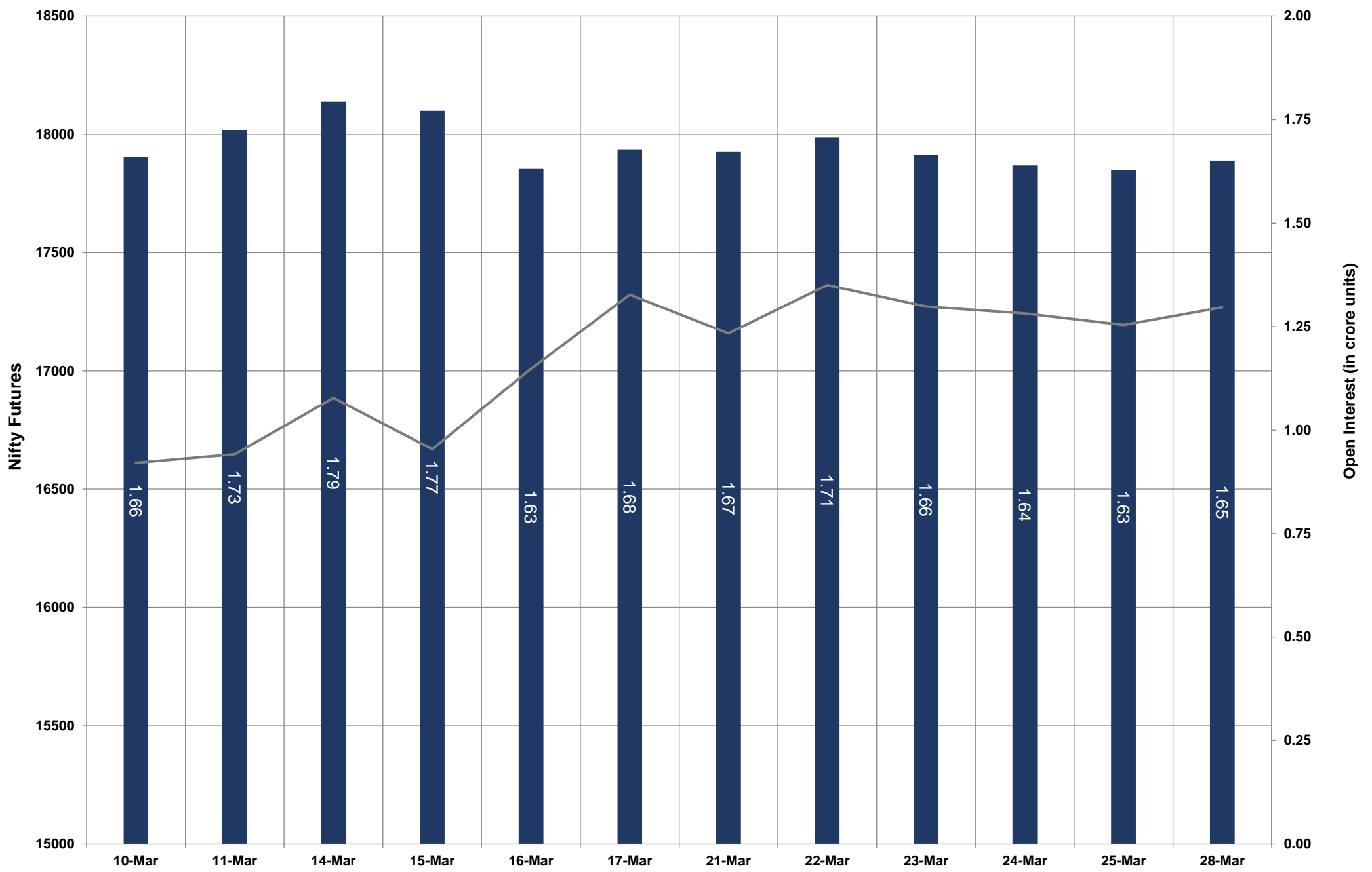


- Nifty Cash = 17222.00 (0.40%)
- Resistance levels = 17330 and 17440
- Support levels = 17020 and 16840

# TECHNICAL VIEWS



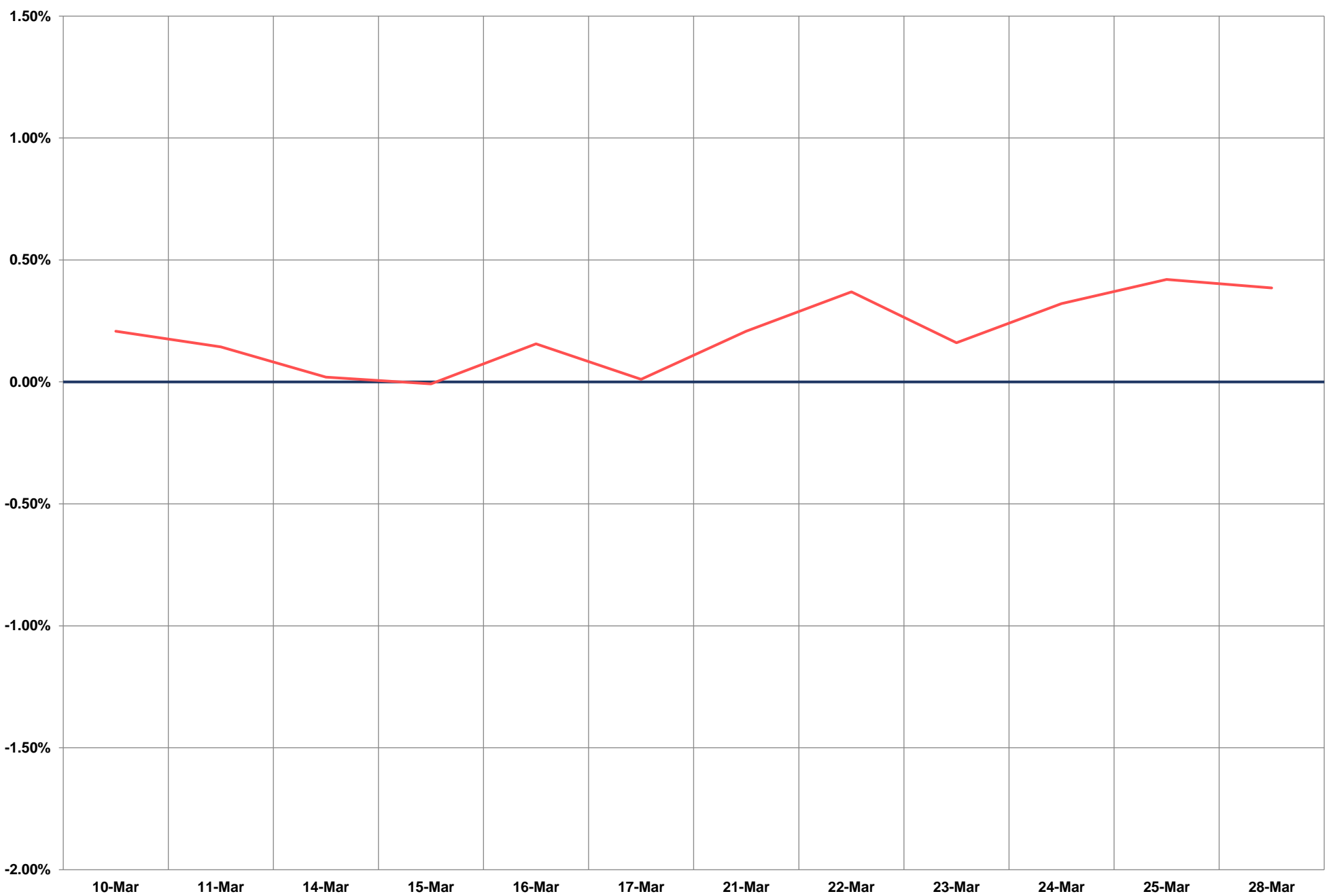
## NIFTY FUTURES



# TECHNICAL VIEWS



## BANK NIFTY FUTURES

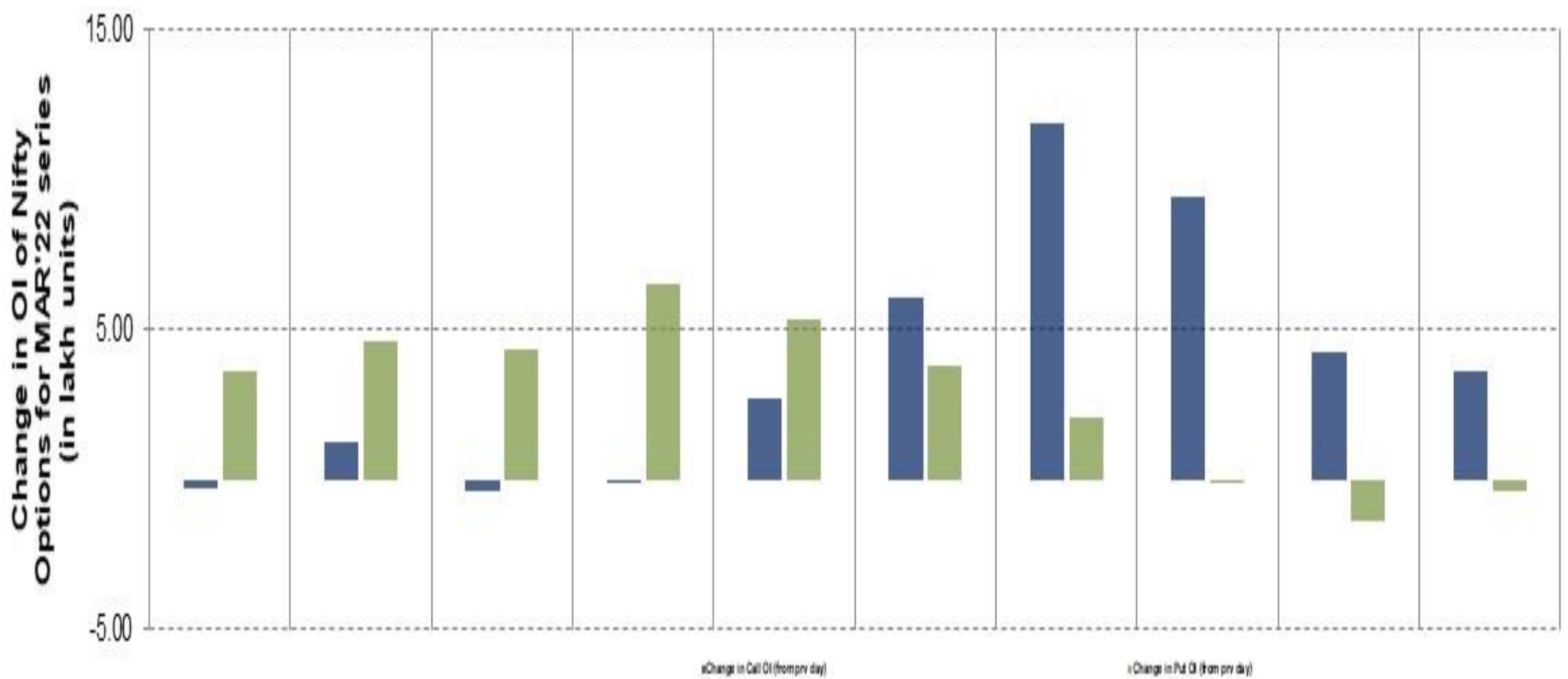
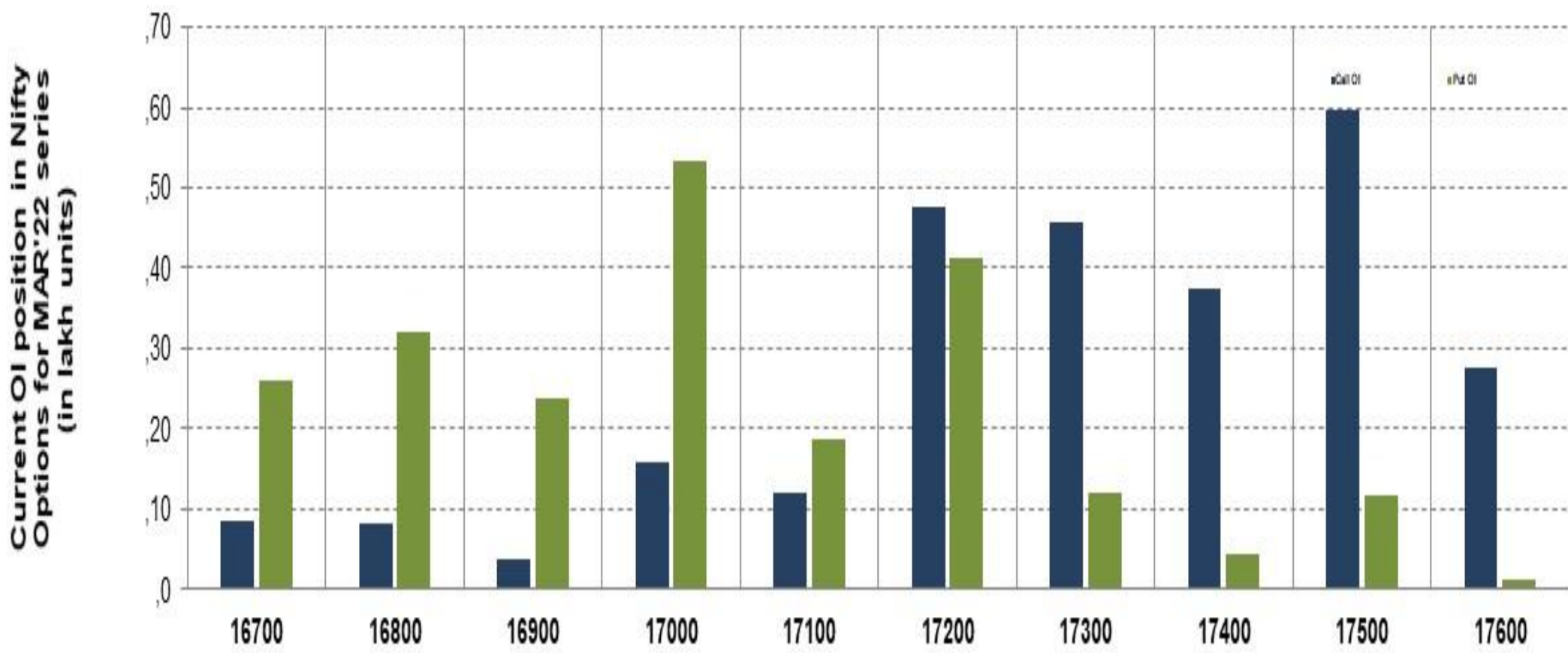




# TECHNICAL VIEWS



## NIFTY OPTIONS



- **Most Active Nifty Call** with an addition of **1.16 million** in Open Interests is **Strike Price of 17300**
- **Most Active Nifty Put** with an addition of **0.65 millions** in Open Interests is **Strike Price of 17000**
- **Maximum Open Interest** an outstanding was **5.98 millions** for Calls at **Strike Price of 17500**
- **Maximum Open Interest** an outstanding was **5.33 millions** for Puts at **Strike Price of 17000**

# Disclaimer



The Information provided by SMS or in newsletter or in any document has been prepared by Shah Investor's Home Ltd (SIHL). The Information provided by SMS or in newsletter does not constitute an offer or solicitation for the purchase or sale of any financial instrument or as an official confirmation of any transaction. The information contained herein is from publicly available data or other sources believed to be reliable, but we do not represent that it is accurate or complete and it should not be relied on as such. SIHL or any of its affiliates/ group companies shall not be in any way responsible for any loss or damage that may arise to any person from any error in the information contained in this report or SMS. This Information provided by SMS, reports or in newsletter is provided for assistance only and is not intended to be and must not alone be taken as the basis for an investment decision. The user assumes the entire risk of any use made of this information. Each recipient of this Information provided by SMS, report or in newsletter should make such investigation as it deems necessary to arrive at an independent evaluation of an investment in the securities of companies referred to in this information provided by SMS, report or in newsletter (including the merits and risks involved), and should consult his own advisors to determine the merits and risks of such investment. The investment discussed or views expressed may not be suitable for all investors. This information is strictly confidential and is being furnished to you solely for your information.

The information should not be reproduced or redistributed or passed on directly or indirectly in any form to any other person or published, copied, in whole or in part, for any purpose. The information provided by report or SMS is not directed or intended for distribution to, or use by, any person or entity who is a citizen or resident of or located in any locality, state, country or other jurisdiction, where such distribution, publication, availability or use would be contrary to law, regulation or which would subject SIHL and affiliates/ group companies to any registration or licensing requirements within such jurisdiction. The distribution of this Information provided by SMS or in newsletter in certain jurisdictions may be restricted by law, and persons in whose possession this Information provided by SMS or in newsletter comes, should inform themselves about and observe, any such restrictions. The information given or Information provided by SMS, report or in newsletter is as of the date of the issue date of report or the date on which SMS provided and there can be no assurance that future results or events will be consistent with this information. This information is subject to change without any prior notice. SIHL reserves the right to make modifications and alterations to this statement as may be required from time to time. However, SIHL is under no obligation to update or keep the information current.

Nevertheless, SIHL is committed to providing independent and transparent recommendation to its client and would be happy to provide any information in response to specific client queries. Neither SIHL nor any of its affiliates, group companies, directors, employees, agents or representatives shall be liable for any damages whether direct, indirect, special or consequential including lost revenue or lost profits that may arise from or in connection with the use of the information. Past performance is not necessarily a guide to future performance. The disclosures of interest statements incorporated in the Information provided by SMS, report or in newsletter are provided solely to enhance the transparency and should not be treated as endorsement of the views expressed in the report. The analyst for this report certifies that all of the views expressed in this report accurately reflect his or her personal views about the subject company or companies and its or their securities, and no part of his or her compensation was, is or will be, directly or indirectly related to specific recommendations or views expressed in this report.