



# MORNING MANTRA



Daily Derivatives & Market Report

JUNE 03, 2022



Indian equity benchmarks failed to hold gains on Friday's trading session, with both Sensex and Nifty ending in red terrain. The start of the trading day was on a strong note, as SBI Research projected the Indian economy to grow at 7.5 per cent in 2022-23, an upward revision of 20 basis points from its earlier estimate. It said 'given the high inflation and the subsequent upcoming rate hikes, we believe that real GDP will incrementally increase by Rs 11.1 lakh crore in FY23'.

Adding more optimism, the commerce ministry said India's merchandise exports rose by 15.46 per cent to \$37.29 billion in May on account of healthy performance by sectors like petroleum products, electronic goods and chemicals, even as the trade deficit widened to \$23.33 billion during the month. Traders took note of Food Secretary Sudhanshu Pandey's statement that retail prices of wheat, rice, sugar and edible oils are showing a declining trend after the measures taken by the government, including curbs on exports of wheat and sugar.

Indices remained higher for the most part of the session, as traders got encouragement, after India's dominant services sector expanded at the fastest pace in 11 years in May on strong demand, although inflationary pressures touched new highs, restricting optimism and weighing on consumers' pocketbooks. The S&P Global India Services Purchasing Managers' Index rose to 58.9 in May from 57.9 in April, its highest since April 2011 and comfortably beating the Reuters poll expectation of 57.5. However, in the last hour, markets turned negative, on the back of heavy profit booking.

On the global front, European markets were trading mostly in green cheered by the overnight's rally on Wall Street. Asian markets settled mostly higher, after the services sector in Japan continued to expand in May, and at a faster rate, the latest survey from Jibun Bank revealed on Friday with a services PMI score of 52.6. That's up from 50.7 in April, and it moves further above the boom-or-bust line of 50.

Back home, the non-banking financial companies shares remained in focus, as Care Ratings in its latest report has said that bank credit to non-banking financial companies (NBFCs) grew in double digit in FY22 with outstanding bank credit to them rising by 10.4 per cent to Rs 10.5 lakh crore on the back of improvement in overall economic activities and banks' renewed focus on the NBFC sector following improvement in their balance sheets.

# MARKET SELFIE



## MARKET SUMMARY

Domestic Indices	Close	Points	% Change
SENSEX	55769.23	-48.88	-0.09
NIFTY	16584.30	-43.70	-0.26
MIDCAP	22774.98	-336.23	-1.45
SMLCAP	26384.14	-310.64	-1.16
BSEFMC	14009.62	-74.71	-0.53
AUTO	25760.63	-456.09	-1.74
POWER	4092.59	-100.45	-2.40
REALTY	3237.34	-30.88	-0.94
BSE IT	30383.58	104.82	0.35
BANKEX	40661.65	-403.52	-0.98
OIL GAS	18843.07	-52.22	-0.28
METAL	18115.69	-227.64	-1.24
INDIA VIX	19.98	-0.34	-1.67

## ADVANCE - DECLINE

Index	Advance	Decline	Unchanged
NSE	731	1337	75
BSE	1367	1969	130

## MARKET TURNOVER (₹ in Crs)

Segment	Current	Previous	Net %
BSE CASH	3211	3045	5
NSE CASH	52268	49886	5
NSE F&O	5293277	20337275	(74)

## KEY INDICES RATIOS

INDEX	P/E	P/B	Dividend Yield
NIFTY	20.52	4.24	1.41
SENSEX	22.74	3.23	1.19

# KEY NUMBERS TRACKER



## FII – DII ACTIVITY IN CASH SEGMENT (₹ in Crs)

FII-DII*	Buy	Sell	Net
DII	6890	4530	2361
FII	5805	9575	(3771)

Note: FPI & DII Figures are provisional

## FII ACTIVITY IN DERIVATIVES SEGMENT (₹ in Crs)

FII	Buy	Sell	Net
Index Futures	3553.80	3366.60	187
Index Options	423380.23	419127.22	4253
Stock Futures	14782.04	11694.75	3087
Stock Options	6956.00	7114.13	(158)

## PUT-CALL RATIO

Index	Current	Previous
NIFTY	0.97	1.20
BANK NIFTY	0.63	0.97

## DOLLAR INDEX

Dollar Index	Current	Previous	% Change
DXY	101.90	101.82	0.07

## 10-YEARS G-SEC YIELD

Country	Current	Previous	% Change
INDIA	7.460	7.434	0.35
USA	2.919	2.915	0.12

## KEY COMMODITIES TRACKER (in \$)

Commodity	Current	Change Points	% Change
Gold	1865.96	-3.88	-0.21
Silver	22.41	0.03	0.14
Crude-Oil	116.12	-0.75	-0.64
Brent-Crude	117.07	-0.54	-0.46

# CURRENCY FUTURES & INDEX TRENDS TRACKER



## CURRENCY FUTURES

Expiry	Close	Change Points	% Change
28 JUN -22 USD-INR	77.77	-0.01	-0.01
28 JUN -22 EUR-INR	83.68	0.41	0.50
28 JUN -22 GBP-INR	97.74	0.10	0.10
28 JUN -22 JPY- INR	59.85	-0.20	-0.34

## INDICES – SUPPORT-RESISTANCE-PIVOT LEVELS

Index	Close	S2	S1	Pivot	R1	R2
NIFTY	16584	16423	16504	16649	16729	16875
SENSEX	55769	55260	55515	55974	56228	56687
NIFTY FUTURES	16601	16444	16523	16656	16735	16868
BANK NIFTY	35275	34686	34981	35470	35764	36253
CNX IT	29904	29406	29655	30107	30356	30808
CNX MIDCAP	28023	27514	27769	28249	28504	28984
CNX SMALLCAP	9210	9049	9130	9269	9349	9489
INDIA VIX	19.98	18.10	19.04	19.68	20.62	21.26

## INDEX TREND ANALYSIS

Index	Daily	Weekly	Monthly
NIFTY	Neutral	Sell	Neutral
SENSEX	Neutral	Sell	Neutral
NIFTY FUTURES	Neutral	Sell	Neutral
BANK NIFTY	Neutral	Neutral	Neutral
CNX IT	Neutral	Sell	Neutral
CNX MIDCAP	Neutral	Sell	Neutral
CNX SMALLCAP	Neutral	Sell	Neutral
INDIA VIX	Sell	Neutral	Neutral

## SECURITIES BAN IN F&O TRADES FOR 06-06-2022

NIL

# TECHNICAL VIEWS



## NIFTY

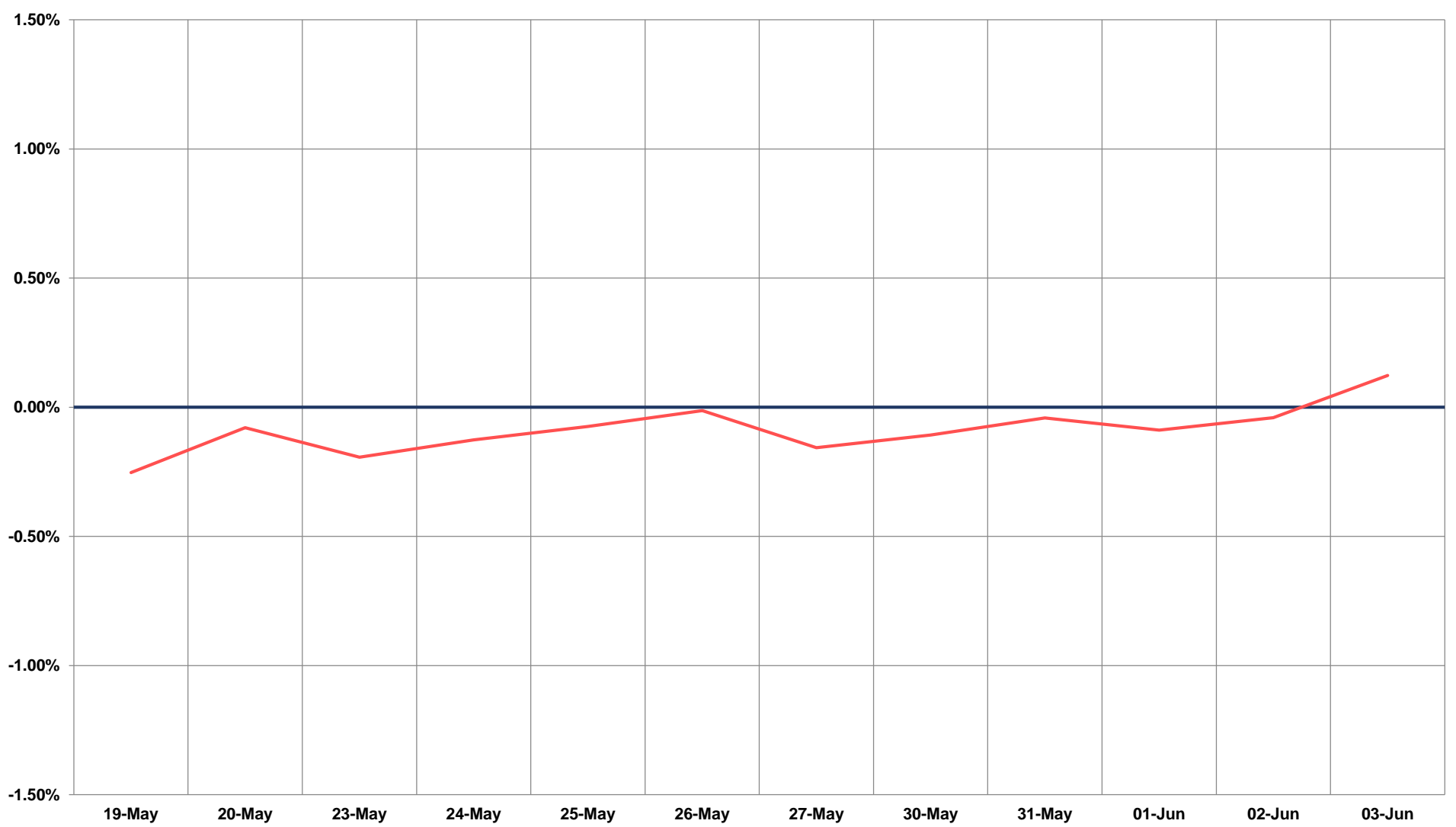
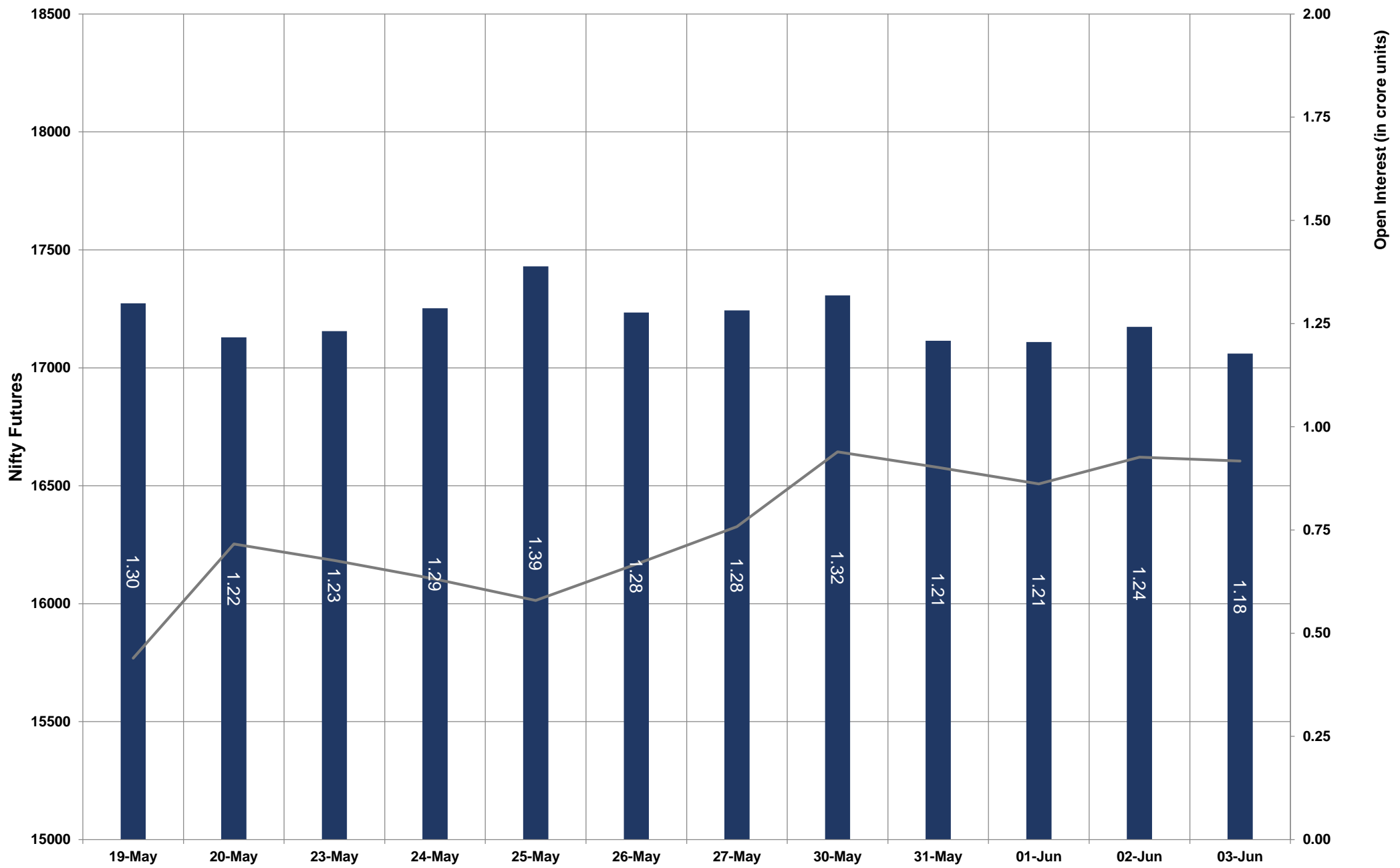


- Nifty Cash = **16584.30 (-0.26%)**
- Resistance levels = **16740** and **16850**
- Support levels = **16520** and **16400**

# TECHNICAL VIEWS



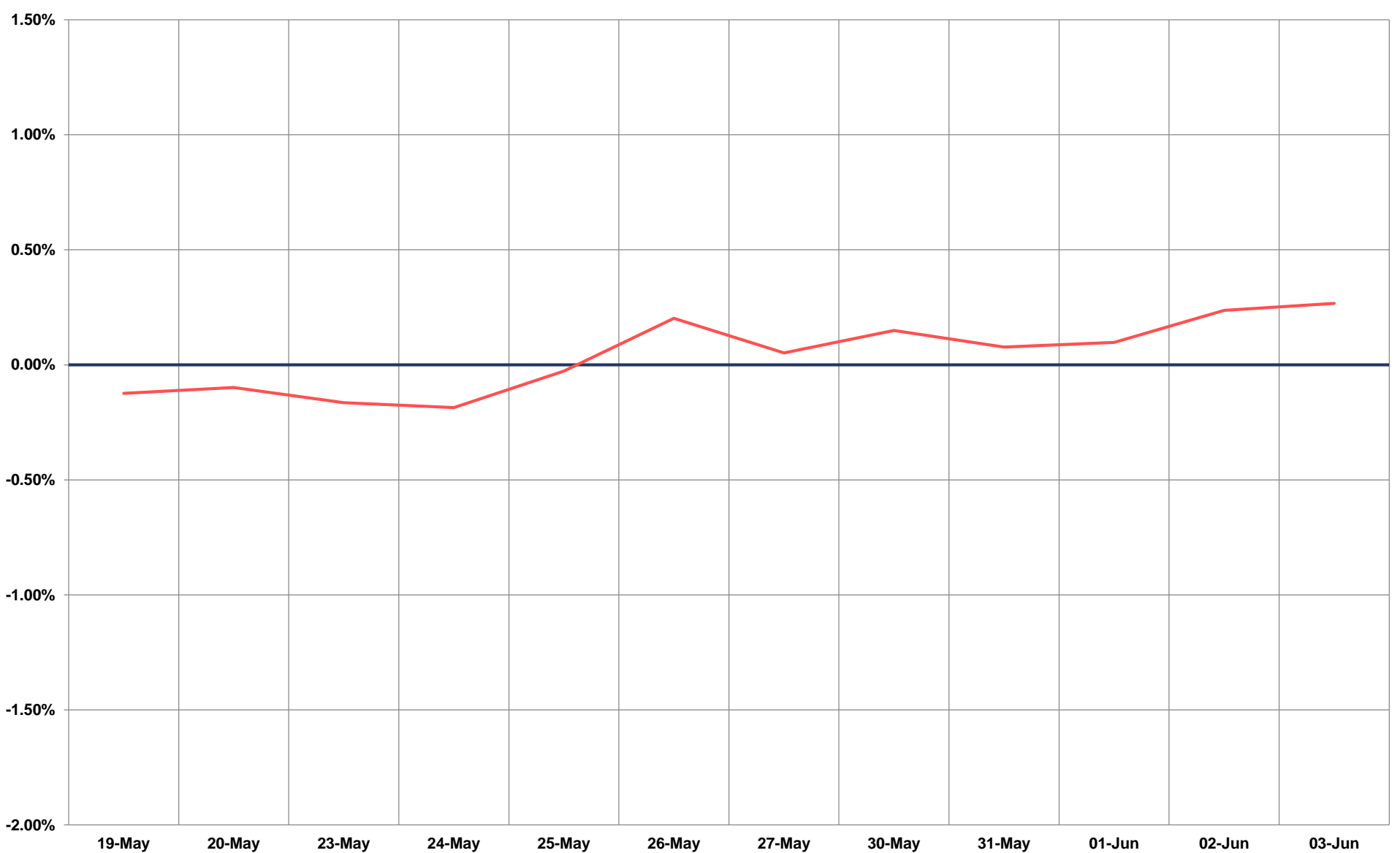
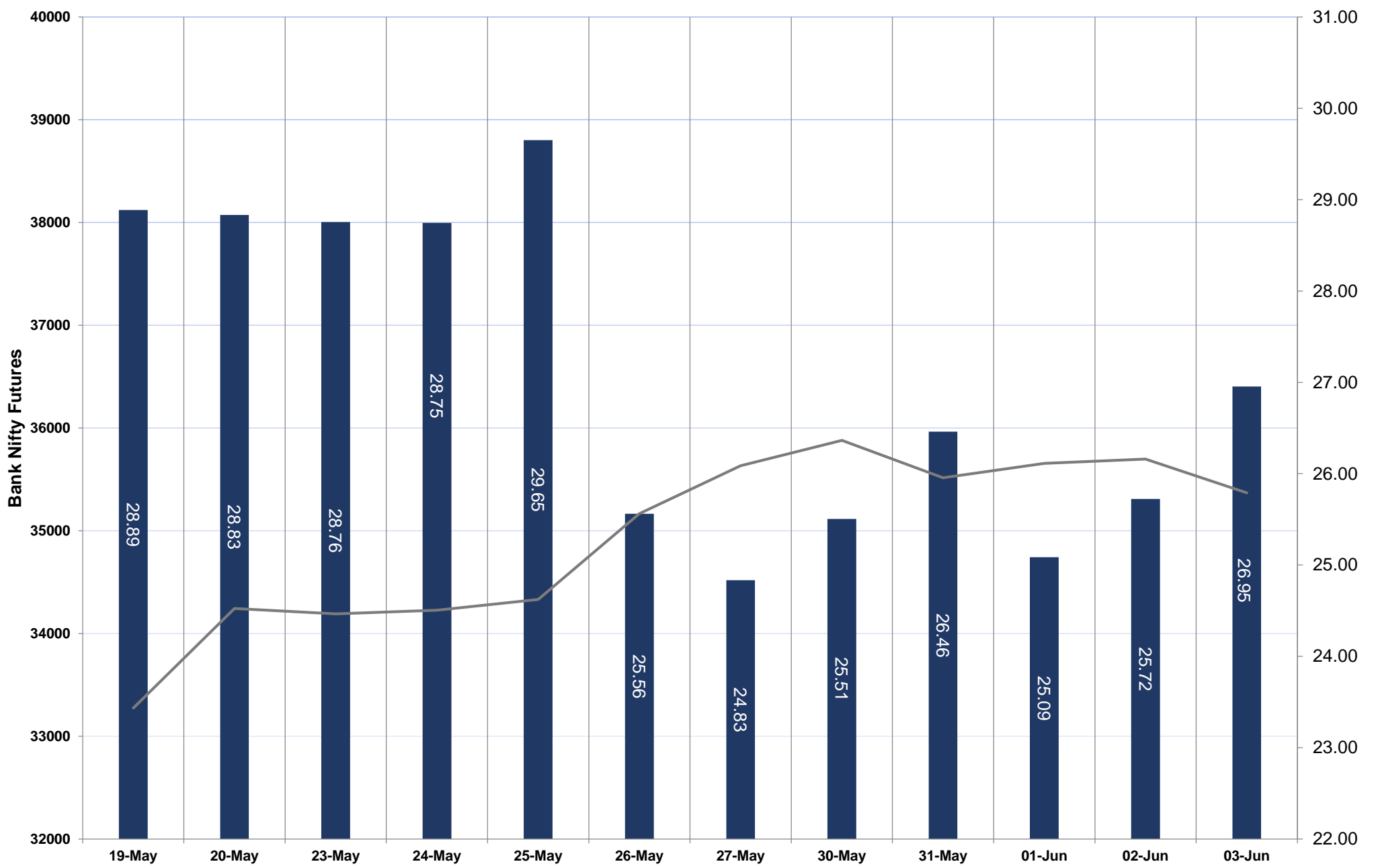
## NIFTY FUTURES



# TECHNICAL VIEWS



## BANK NIFTY FUTURES

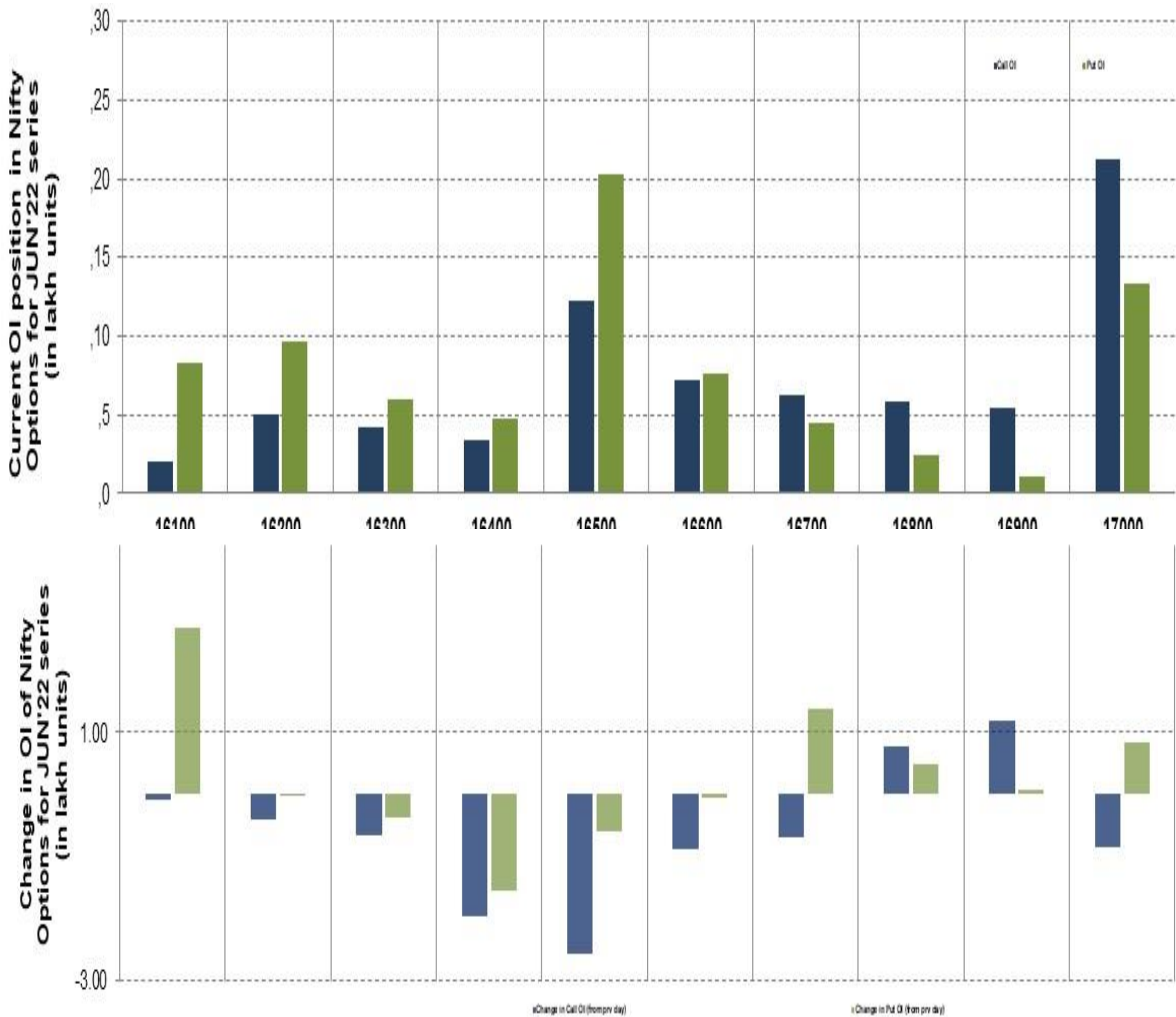




# TECHNICAL VIEWS



## NIFTY OPTIONS



- **Most Active Nifty Call** with a reduction of 0.25 million in Open Interests is **Strike Price of 16500**
- **Most Active Nifty Put** with an addition of 0.26 millions in Open Interests is **Strike Price of 16100**
- **Maximum Open Interest an outstanding** was 2.12 millions for Calls at **Strike Price of 17000**
- **Maximum Open Interest an outstanding** was 2.03 millions for puts at **Strike Price of 16500**

# Disclaimer



The Information provided by SMS or in newsletter or in any document has been prepared by Shah Investor's Home Ltd (SIHL). The Information provided by SMS or in newsletter does not constitute an offer or solicitation for the purchase or sale of any financial instrument or as an official confirmation of any transaction. The information contained herein is from publicly available data or other sources believed to be reliable, but we do not represent that it is accurate or complete and it should not be relied on as such. SIHL or any of its affiliates/ group companies shall not be in any way responsible for any loss or damage that may arise to any person from any error in the information contained in this report or SMS. This Information provided by SMS, reports or in newsletter is provided for assistance only and is not intended to be and must not alone be taken as the basis for an investment decision. The user assumes the entire risk of any use made of this information. Each recipient of this Information provided by SMS, report or in newsletter should make such investigation as it deems necessary to arrive at an independent evaluation of an investment in the securities of companies referred to in this information provided by SMS, report or in newsletter (including the merits and risks involved), and should consult his own advisors to determine the merits and risks of such investment. The investment discussed or views expressed may not be suitable for all investors. This information is strictly confidential and is being furnished to you solely for your information.

The information should not be reproduced or redistributed or passed on directly or indirectly in any form to any other person or published, copied, in whole or in part, for any purpose. The information provided by report or SMS is not directed or intended for distribution to, or use by, any person or entity who is a citizen or resident of or located in any locality, state, country or other jurisdiction, where such distribution, publication, availability or use would be contrary to law, regulation or which would subject SIHL and affiliates/ group companies to any registration or licensing requirements within such jurisdiction. The distribution of this Information provided by SMS or in newsletter in certain jurisdictions may be restricted by law, and persons in whose possession this Information provided by SMS or in newsletter comes, should inform themselves about and observe, any such restrictions. The information given or Information provided by SMS, report or in newsletter is as of the date of the issue date of report or the date on which SMS provided and there can be no assurance that future results or events will be consistent with this information. This information is subject to change without any prior notice. SIHL reserves the right to make modifications and alterations to this statement as may be required from time to time. However, SIHL is under no obligation to update or keep the information current.

Nevertheless, SIHL is committed to providing independent and transparent recommendation to its client and would be happy to provide any information in response to specific client queries. Neither SIHL nor any of its affiliates, group companies, directors, employees, agents or representatives shall be liable for any damages whether direct, indirect, special or consequential including lost revenue or lost profits that may arise from or in connection with the use of the information. Past performance is not necessarily a guide to future performance. The disclosures of interest statements incorporated in the Information provided by SMS, report or in newsletter are provided solely to enhance the transparency and should not be treated as endorsement of the views expressed in the report. The analyst for this report certifies that all of the views expressed in this report accurately reflect his or her personal views about the subject company or companies and its or their securities, and no part of his or her compensation was, is or will be, directly or indirectly related to specific recommendations or views expressed in this report.