



# MORNING MANTRA



Daily Derivatives & Market Report

JUNE 08, 2022



Indian equity benchmarks ended lower on Wednesday's trading session. After a positive start, markets soon turned volatile, as the World Bank cut India's economic growth forecast for the current fiscal to 7.5 per cent as rising inflation, supply chain disruptions and geopolitical tensions taper recovery. This is the second time that the World Bank has revised its GDP growth forecast for India in the current fiscal 2022-23 (April 2022 to March 2023). In April, it had trimmed the forecast from 8.7 per cent to 8 per cent.

Despite volatility, markets managed to trade higher in late morning deals, after Reserve Bank of India's (RBI) Monetary Policy Committee has raised Repo Rate by 50 basis points (bps) to 4.90 per cent in its June bi-monthly meeting. Real GDP growth for FY 2022-23 is retained at 7.2%. Adding more relief among traders, the Reserve Bank of India (RBI) in its latest data has showed that Bank credit grew by 11.04 per cent to Rs 120.27 lakh crore and deposits up by 9.27 per cent to Rs 165.74 lakh crore in the fortnight ended May 20, 2022.

However, in the second half of the trading session, key indices turned red as RBI Governor Shaktikanta Das said the Ukraine-Russia war has led to globalisation of inflation and is posing new challenges, as the central bank upped the inflation projection to 6.7 per cent for current fiscal year. In April, RBI had projected retail inflation at 5.7 per cent for 2022-23. Traders failed to take support with Chief Economic Advisor (CEA) Anantha Nageswaran's statement that the impact of structural reforms, like GST and IBC, will help boost India's growth once the cloud of the pandemic and geopolitical conflict recedes.

On the global front, European markets were trading lower as investors prepare for the latest reading of U.S. inflation on Friday. Asian markets settled mostly higher on Wednesday, after a measure of the public assessment of the Japanese economy advanced in May. The survey data from the Cabinet Office showed that the current conditions index of the Economy Watchers' Survey, which measures the present situation of the economy, rose to 54.0 in May from 50.4 in April.

Back home, on the sectoral front, coal sector remained in focus, after Moody's Investors Service has said that large coal-importing nations, including India, will look to ramp up the output of domestic coal to strengthen energy security and lessen dependence on the import of fossil fuels. The government has recently mandated Coal India (CIL) to import coal as an emergency measure to avoid a shortage of coal for the country's power utilities and build up buffer stock.

# MARKET SELFIE



## MARKET SUMMARY

Domestic Indices	Close	Points	% Change
SENSEX	54892.49	-214.85	-0.39
NIFTY	16356.25	-60.10	-0.37
MIDCAP	22530.72	-33.75	-0.15
SMLCAP	25978.00	-87.30	-0.33
BSEFMC	13668.82	-130.71	-0.95
AUTO	25944.59	17.28	0.07
POWER	4115.19	-14.35	-0.35
REALTY	3218.41	59.52	1.88
BSE IT	29948.75	59.70	0.20
BANKEX	40304.75	-71.14	-0.18
OIL GAS	19031.28	-131.56	-0.69
METAL	18190.14	94.97	0.52
INDIA VIX	19.84	-0.58	-2.84

## ADVANCE - DECLINE

Index	Advance	Decline	Unchanged
NSE	864	1189	88
BSE	1556	1767	110

## MARKET TURNOVER (₹ in Crs)

Segment	Current	Previous	Net %
BSE CASH	2950	2593	14
NSE CASH	44123	42554	4
NSE F&O	12054096	6550452	84

## KEY INDICES RATIOS

INDEX	P/E	P/B	Dividend Yield
NIFTY	20.31	4.20	1.43
SENSEX	22.41	3.18	1.21

# KEY NUMBERS TRACKER



## FII – DII ACTIVITY IN CASH SEGMENT (₹ in Crs)

FII-DII*	Buy	Sell	Net
DII	5509	3604	1904
FII	5469	7953	(2484)

Note: FPI & DII Figures are provisional

## FII ACTIVITY IN DERIVATIVES SEGMENT (₹ in Crs)

FII	Buy	Sell	Net
Index Futures	2934.03	3668.93	(735)
Index Options	1036590.91	1041751.06	(5160)
Stock Futures	10758.82	10701.29	58
Stock Options	5842.73	5794.83	48

## PUT-CALL RATIO

Index	Current	Previous
NIFTY	0.73	0.78
BANK NIFTY	0.66	0.65

## DOLLAR INDEX

Dollar Index	Current	Previous	% Change
DXY	102.44	102.31	0.12

## 10-YEARS G-SEC YIELD

Country	Current	Previous	% Change
INDIA	7.492	7.518	-0.35
USA	3.009	2.970	1.30

## KEY COMMODITIES TRACKER (in \$)

Commodity	Current	Change Points	% Change
Gold	1950.38	-3.17	-0.17
Silver	22.00	-0.23	-1.05
Crude-Oil	120.98	1.57	1.31
Brent-Crude	122.03	1.46	1.21



# CURRENCY FUTURES & INDEX TRENDS TRACKER



## CURRENCY FUTURES

Expiry	Close	Change Points	% Change
28 JUN -22 USD-INR	77.82	-0.13	-0.16
28 JUN -22 EUR-INR	83.62	0.33	0.40
28 JUN -22 GBP-INR	97.70	0.30	0.31
28 JUN -22 JPY- INR	58.16	-0.62	-1.06

## INDICES – SUPPORT-RESISTANCE-PIVOT LEVELS

Index	Close	S2	S1	Pivot	R1	R2
NIFTY	16356	16167	16262	16388	16483	16609
SENSEX	54892	54259	54576	55000	55317	55741
NIFTY FUTURES	16355	16166	16261	16404	16499	16642
BANK NIFTY	34946	34458	34702	35076	35320	35694
CNX IT	29472	28973	29222	29405	29655	29838
CNX MIDCAP	27671	27344	27507	27734	27897	28124
CNX SMALLCAP	9035	8912	8974	9058	9119	9203
INDIA VIX	19.84	18.67	19.26	19.97	20.56	21.27

## INDEX TREND ANALYSIS

Index	Daily	Weekly	Monthly
NIFTY	Sell	Sell	Neutral
SENSEX	Sell	Sell	Neutral
NIFTY FUTURES	Sell	Sell	Neutral
BANK NIFTY	Sell	Neutral	Neutral
CNX IT	Neutral	Sell	Neutral
CNX MIDCAP	Sell	Sell	Neutral
CNX SMALLCAP	Sell	Sell	Neutral
INDIA VIX	Sell	Neutral	Neutral

## SECURITIES BAN IN F&O TRADES FOR 09-06-2022

DELTACORP

# TECHNICAL VIEWS



## NIFTY

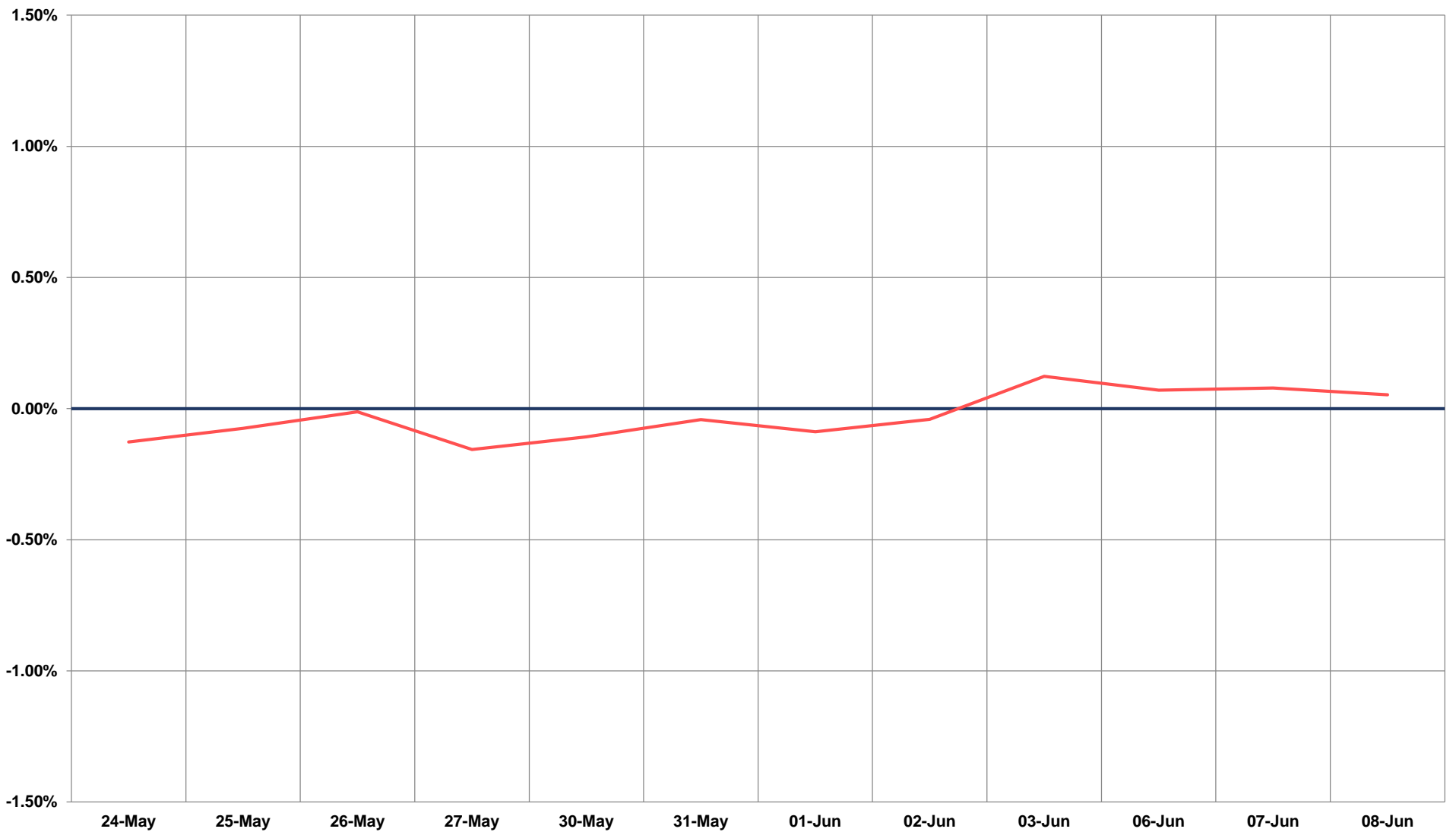
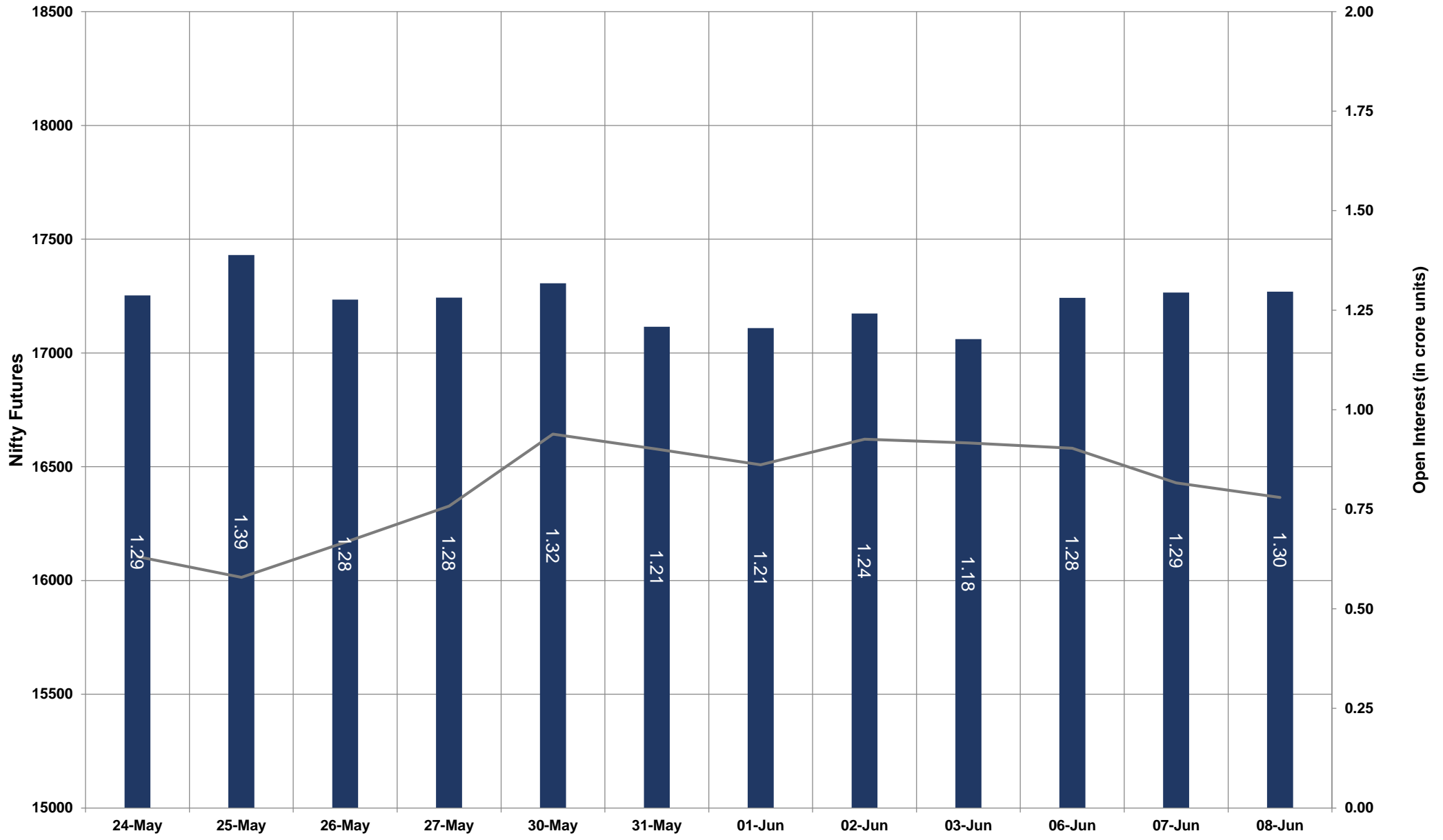


- Nifty Cash = **16356.25 (-0.37%)**
- Resistance levels = **16480** and **16560**
- Support levels = **16260** and **16190**

# TECHNICAL VIEWS



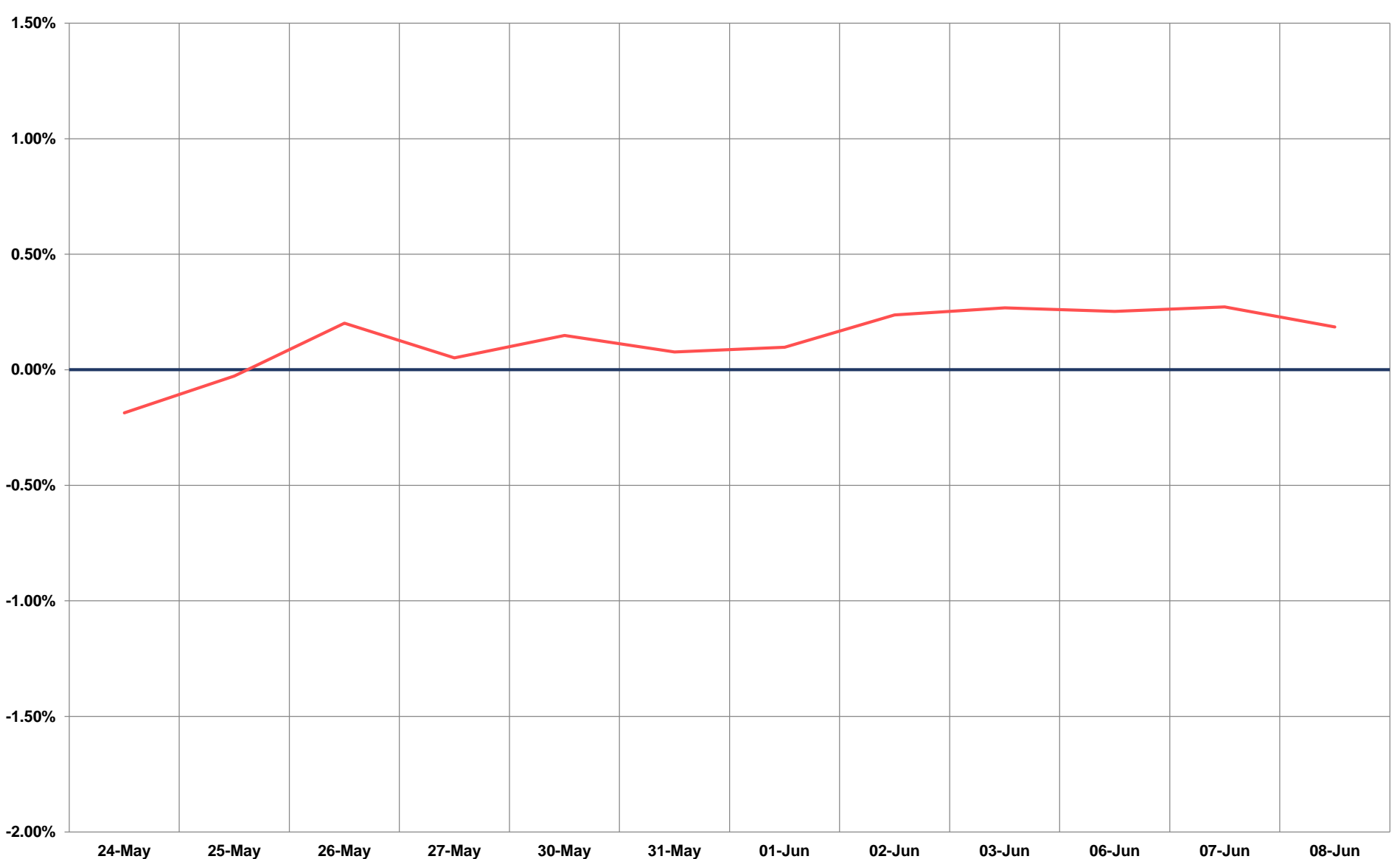
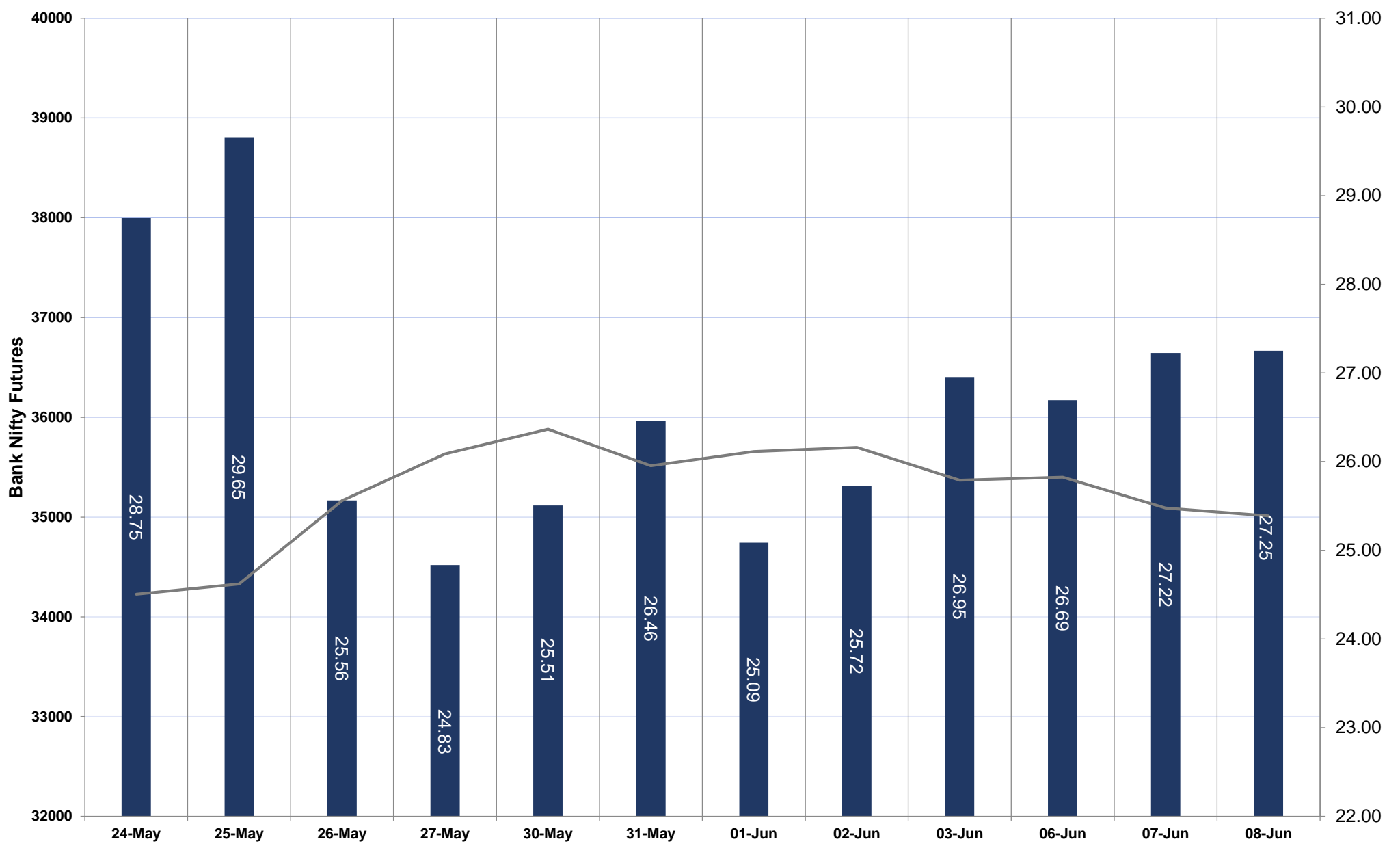
## NIFTY FUTURES



# TECHNICAL VIEWS



## BANK NIFTY FUTURES

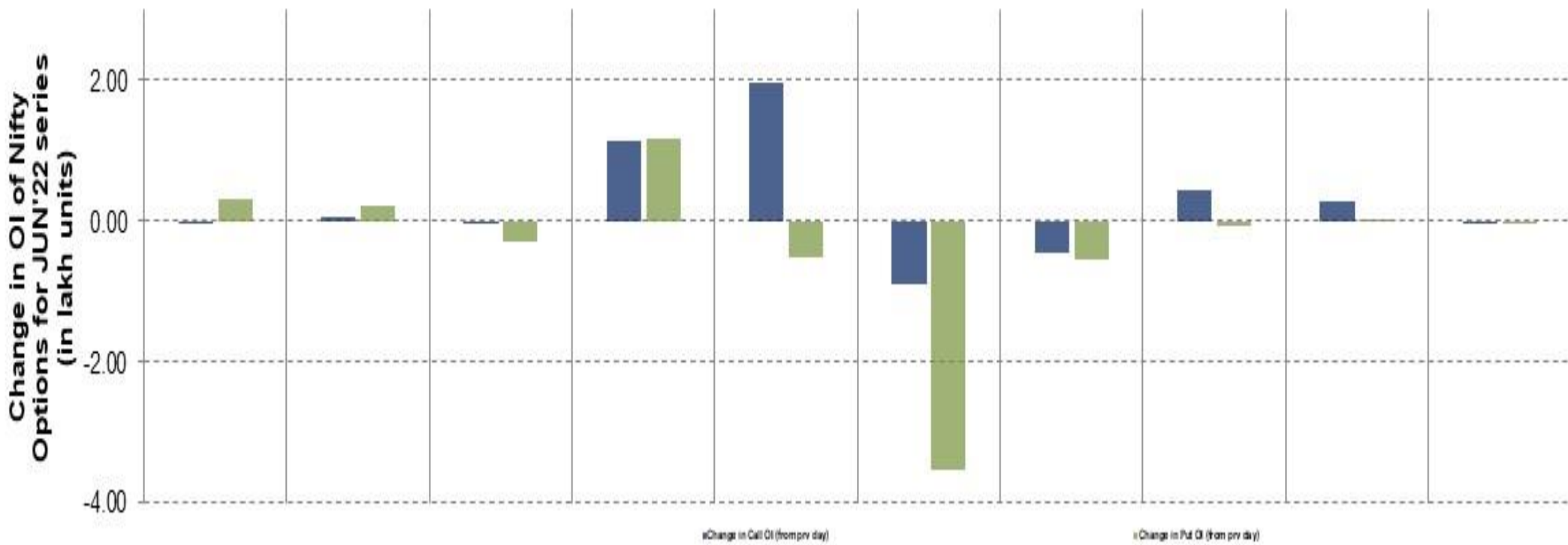
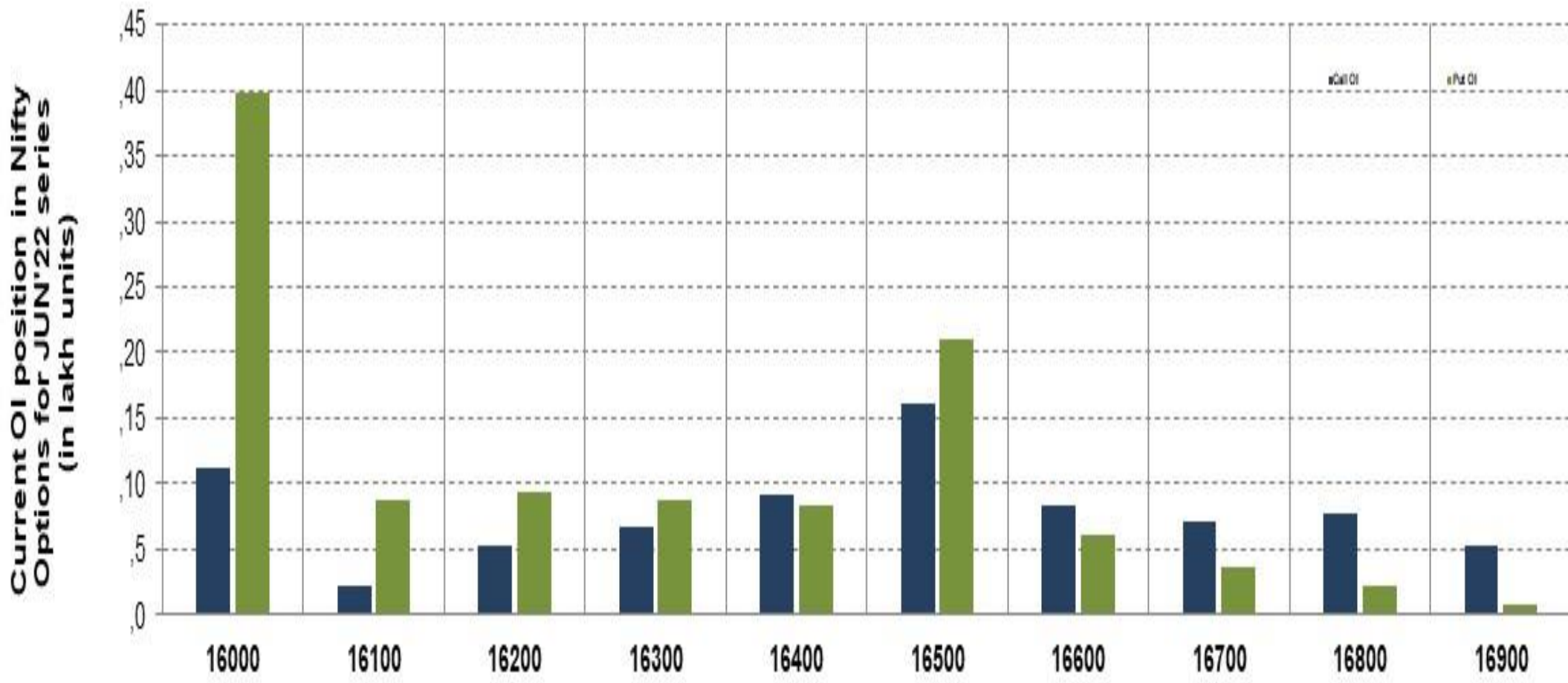




# TECHNICAL VIEWS



## NIFTY OPTIONS



- **Most Active Nifty Call** with an addition of 0.19 million in Open Interests is **Strike Price of 16400**
- **Most Active Nifty Put** with a reduction of 0.34 millions in Open Interests is **Strike Price of 16500**
- **Maximum Open Interest** an outstanding was 1.61 millions for Calls at **Strike Price of 16500**
- **Maximum Open Interest** an outstanding was 3.99 millions for puts at **Strike Price of 16000**

# Disclaimer



The Information provided by SMS or in newsletter or in any document has been prepared by Shah Investor's Home Ltd (SIHL). The Information provided by SMS or in newsletter does not constitute an offer or solicitation for the purchase or sale of any financial instrument or as an official confirmation of any transaction. The information contained herein is from publicly available data or other sources believed to be reliable, but we do not represent that it is accurate or complete and it should not be relied on as such. SIHL or any of its affiliates/ group companies shall not be in any way responsible for any loss or damage that may arise to any person from any error in the information contained in this report or SMS. This Information provided by SMS, reports or in newsletter is provided for assistance only and is not intended to be and must not alone be taken as the basis for an investment decision. The user assumes the entire risk of any use made of this information. Each recipient of this Information provided by SMS, report or in newsletter should make such investigation as it deems necessary to arrive at an independent evaluation of an investment in the securities of companies referred to in this information provided by SMS, report or in newsletter (including the merits and risks involved), and should consult his own advisors to determine the merits and risks of such investment. The investment discussed or views expressed may not be suitable for all investors. This information is strictly confidential and is being furnished to you solely for your information.

The information should not be reproduced or redistributed or passed on directly or indirectly in any form to any other person or published, copied, in whole or in part, for any purpose. The information provided by report or SMS is not directed or intended for distribution to, or use by, any person or entity who is a citizen or resident of or located in any locality, state, country or other jurisdiction, where such distribution, publication, availability or use would be contrary to law, regulation or which would subject SIHL and affiliates/ group companies to any registration or licensing requirements within such jurisdiction. The distribution of this Information provided by SMS or in newsletter in certain jurisdictions may be restricted by law, and persons in whose possession this Information provided by SMS or in newsletter comes, should inform themselves about and observe, any such restrictions. The information given or Information provided by SMS, report or in newsletter is as of the date of the issue date of report or the date on which SMS provided and there can be no assurance that future results or events will be consistent with this information. This information is subject to change without any prior notice. SIHL reserves the right to make modifications and alterations to this statement as may be required from time to time. However, SIHL is under no obligation to update or keep the information current.

Nevertheless, SIHL is committed to providing independent and transparent recommendation to its client and would be happy to provide any information in response to specific client queries. Neither SIHL nor any of its affiliates, group companies, directors, employees, agents or representatives shall be liable for any damages whether direct, indirect, special or consequential including lost revenue or lost profits that may arise from or in connection with the use of the information. Past performance is not necessarily a guide to future performance. The disclosures of interest statements incorporated in the Information provided by SMS, report or in newsletter are provided solely to enhance the transparency and should not be treated as endorsement of the views expressed in the report. The analyst for this report certifies that all of the views expressed in this report accurately reflect his or her personal views about the subject company or companies and its or their securities, and no part of his or her compensation was, is or will be, directly or indirectly related to specific recommendations or views expressed in this report.