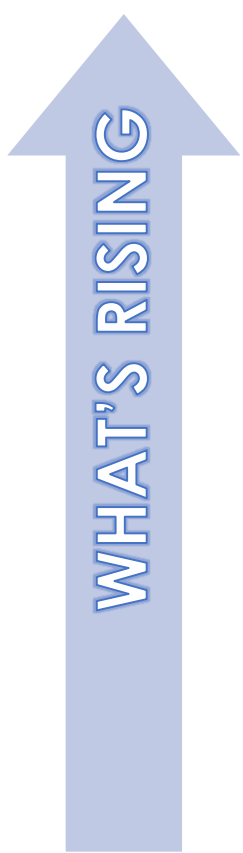


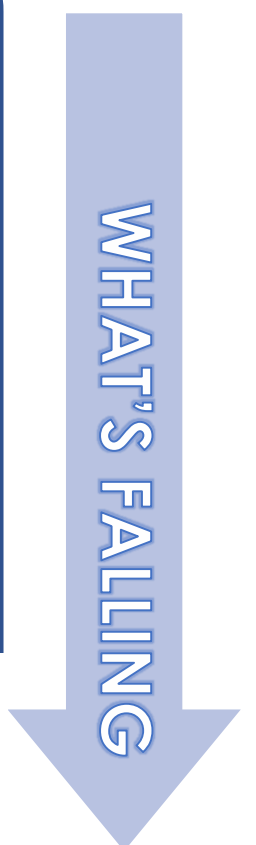


MORNING MANTRA



BULLS

BEARS



Daily Derivatives & Market Report

JULY 27, 2022



Indian equity benchmarks ended near their intraday high points on Wednesday. Markets made a cautious start of the day, as the International Monetary Fund (IMF) in its World Economic Outlook update July 2022 has cut India's growth rate by 0.8 percentage point to 7.4 per cent for fiscal year 2022, reflecting 'mainly less favourable external conditions and more rapid policy tightening'. In April, the IMF had projected a 'fairly robust' growth of 8.2 per cent for India in 2022.

Some concerns remained among traders, amid a private report stating that the global economy is in the grips of a serious slowdown, with some key economies at high risk of recession and only sparse meaningful cooling in inflation over the next year. Besides, global rating agency S&P said it expects "significant" increases in the policy rates by the Reserve Bank of India's (RBI) monetary policy committee (MPC) at its upcoming meetings. The assessment comes a week ahead of the MPC's three-day meeting.

But soon, gaining momentum witnessed over the Dalal Street, as listing various measures taken by the government to address inflation, Union Minister of State for Finance Pankaj Chaudhary has said that the price situation of major essential commodities is monitored by the Government on a regular basis and corrective action is taken from time to time. Traders took some support with Minister of State for Finance Bhagwad Karad stated that the amount involved in fraud cases reported by public sector banks (PSBs) has come down to Rs 3,204 crore in the last fiscal from Rs 28,884 crore in 2017-18.

Key indices added more gains in the second half of the trading session, tracking higher global markets. Sentiments remained positive as ECGC has introduced a new scheme to provide enhanced export credit risk insurance cover to the extent of 90% to support small exporters under the Export Credit Insurance for Banks Whole Turnover Packaging Credit and Post Shipment (ECIB- WTPC & PS). The scheme is expected to benefit a number of small-scale exporters availing of export credit with banks which hold the ECGC WT-ECIB covers.

On the global front, European markets were trading higher, as market participants await the Fed's interest-rate decision later in the day. Asian markets ended mostly higher on Wednesday, after China industrial profits grew slightly in June after falling for two straight months, as the relaxation of pandemic related restrictions underpinned production and sales. Industrial profits grew 0.8 percent year-on-year in June, reversing a 6.5 percent fall in May. During the January to June period, industrial profits advanced 1.0 percent.

MARKET SELFIE



MARKET SUMMARY

Domestic Indices	Close	Points	% Change
SENSEX	55816.32	547.83	0.99
NIFTY	16641.80	157.95	0.96
MIDCAP	23590.14	209.46	0.90
SMLCAP	26517.80	99.89	0.38
BSEFMC	15295.17	110.45	0.73
AUTO	28256.03	103.11	0.37
POWER	4449.49	6.70	0.15
REALTY	3486.43	34.72	1.01
BSE IT	28283.88	373.64	1.34
BANKEX	42329.35	447.14	1.07
OIL GAS	18465.02	182.96	1.00
METAL	17074.12	184.19	1.09
INDIA VIX	18.13	-0.04	-0.22

ADVANCE - DECLINE

Index	Advance	Decline	Unchanged
NSE	1402	822	56
BSE	1755	1565	145

MARKET TURNOVER (₹ in Crs)

Segment	Current	Previous	Net %
BSE CASH	2763	3020	(9)
NSE CASH	44229	47370	(7)
NSE F&O	218475	225443	(3)

KEY INDICES RATIOS

INDEX	P/E	P/B	Dividend Yield
NIFTY	20.19	4.00	1.38
SENSEX	21.90	3.18	1.29

KEY NUMBERS TRACKER



FII – DII ACTIVITY IN CASH SEGMENT (₹ in Crs)

FII-DII*	Buy	Sell	Net
DII	5449	4737	712
FII	4941	5378	(437)

Note: FPI & DII Figures are provisional

FII ACTIVITY IN DERIVATIVES SEGMENT (₹ in Crs)

FII	Buy	Sell	Net
Index Futures	6544.66	4901.85	1643
Index Options	846916.81	844798.49	2118
Stock Futures	33426.29	32296.75	1130
Stock Options	8420.76	7865.95	555

PUT-CALL RATIO

Index	Current	Previous
NIFTY	1.24	1.00
BANK NIFTY	1.21	0.89

DOLLAR INDEX

Dollar Index	Current	Previous	% Change
DXY	106.98	107.19	-0.19

10-YEARS G-SEC YIELD

Country	Current	Previous	% Change
INDIA	7.341	7.367	-0.35
USA	2.788	2.787	0.05

KEY COMMODITIES TRACKER (in \$)

Commodity	Current	Change Points	% Change
Gold	1722.78	4.83	0.28
Silver	18.75	0.08	0.43
Crude-Oil	95.26	0.28	0.29
Brent-Crude	104.53	0.13	0.12

CURRENCY FUTURES & INDEX TRENDS TRACKER



CURRENCY FUTURES

Expiry	Close	Change Points	% Change
26 AUG -22 USD-INR	80.14	0.10	0.12
26 AUG -22 EUR-INR	81.63	0.23	0.28
26 AUG -22 GBP-INR	96.76	0.72	0.75
26 AUG -22 JPY- INR	58.77	0.05	0.08

INDICES – SUPPORT-RESISTANCE-PIVOT LEVELS

Index	Close	S2	S1	Pivot	R1	R2
NIFTY	16642	16363	16503	16578	16717	16793
SENSEX	55186	54704	54945	55399	55640	56094
NIFTY FUTURES	16660	16359	16510	16589	16740	16819
BANK NIFTY	36784	36054	36419	36614	36979	37173
CNX IT	27879	27141	27510	27709	28078	28277
CNX MIDCAP	28976	28399	28687	28846	29135	29293
CNX SMALLCAP	8942	8867	8904	8927	8964	8986
INDIA VIX	18.13	17.28	17.71	18.17	18.60	19.06

INDEX TREND ANALYSIS

Index	Daily	Weekly	Monthly
NIFTY	Buy	Neutral	Neutral
SENSEX	Buy	Neutral	Neutral
NIFTY FUTURES	Buy	Neutral	Neutral
BANK NIFTY	Buy	Neutral	Neutral
CNX IT	Neutral	Neutral	Neutral
CNX MIDCAP	Buy	Neutral	Neutral
CNX SMALLCAP	Neutral	Neutral	Neutral
INDIA VIX	Neutral	Sell	Neutral

SECURITIES BAN IN F&O TRADES FOR 28-07-2022

DELTACORP, IBULHSGFIN

TECHNICAL VIEWS



NIFTY

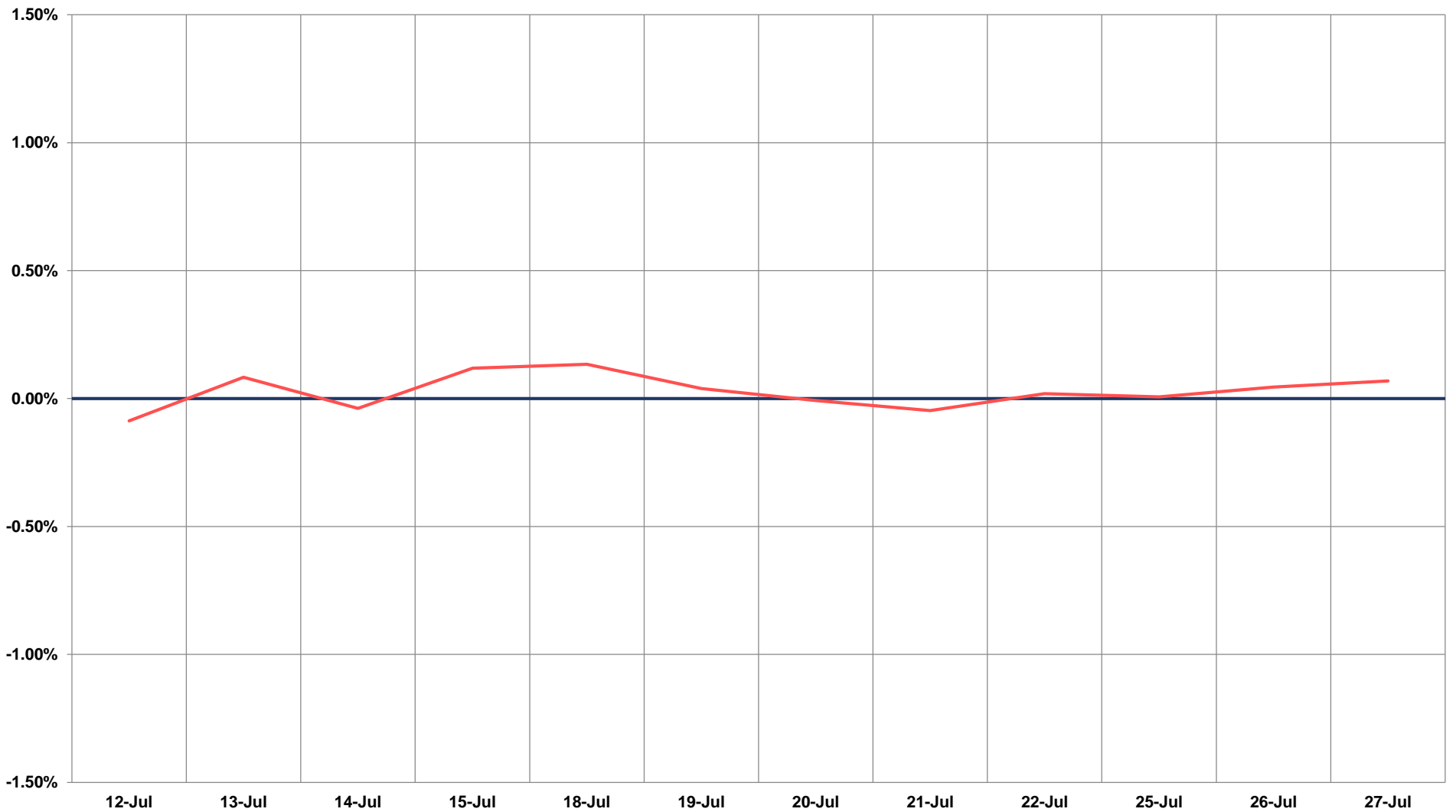
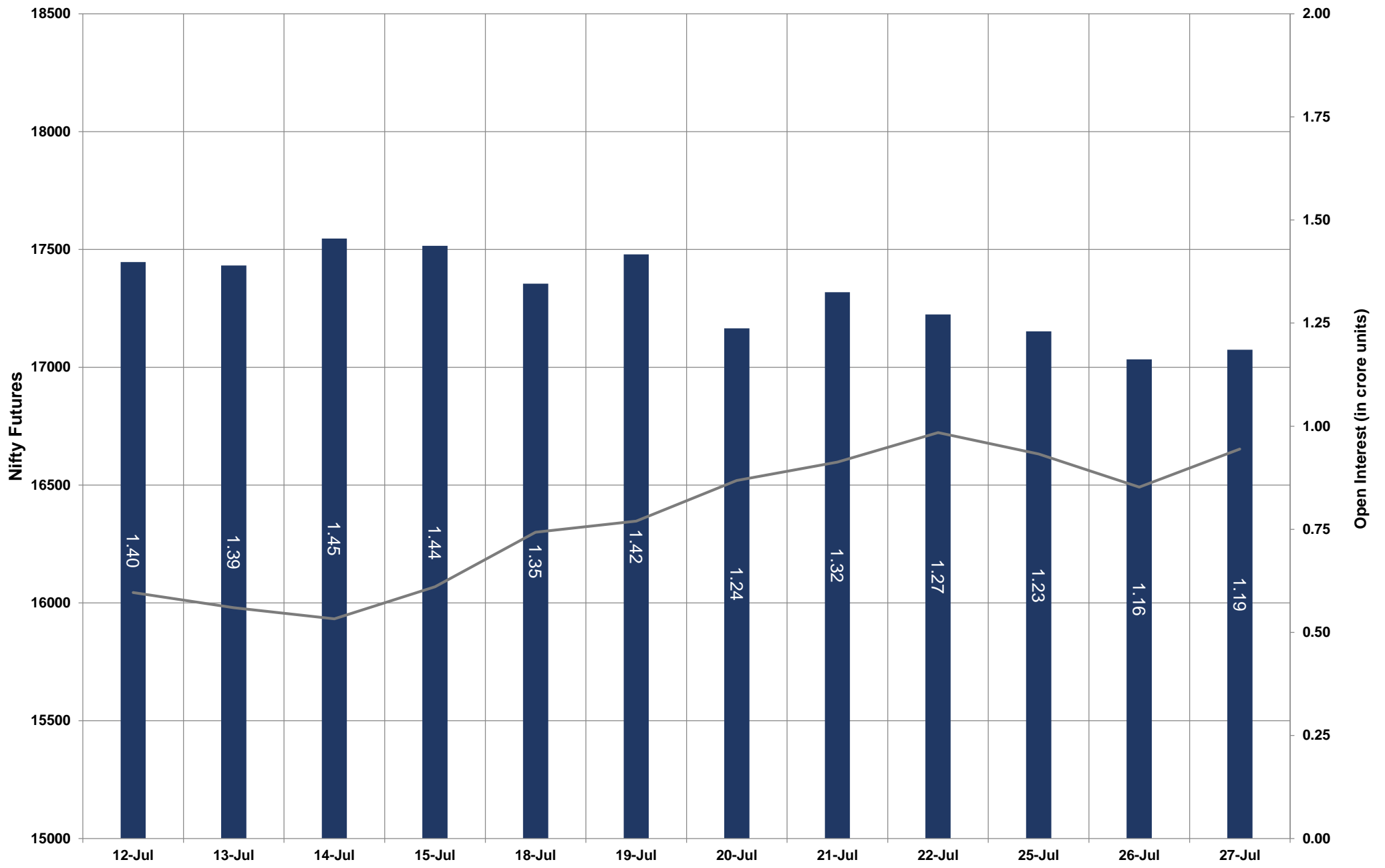


- Nifty Cash = **16641.80 (0.96%)**
- Resistance levels = **16750** and **16900**
- Support levels = **16530** and **16360**

TECHNICAL VIEWS



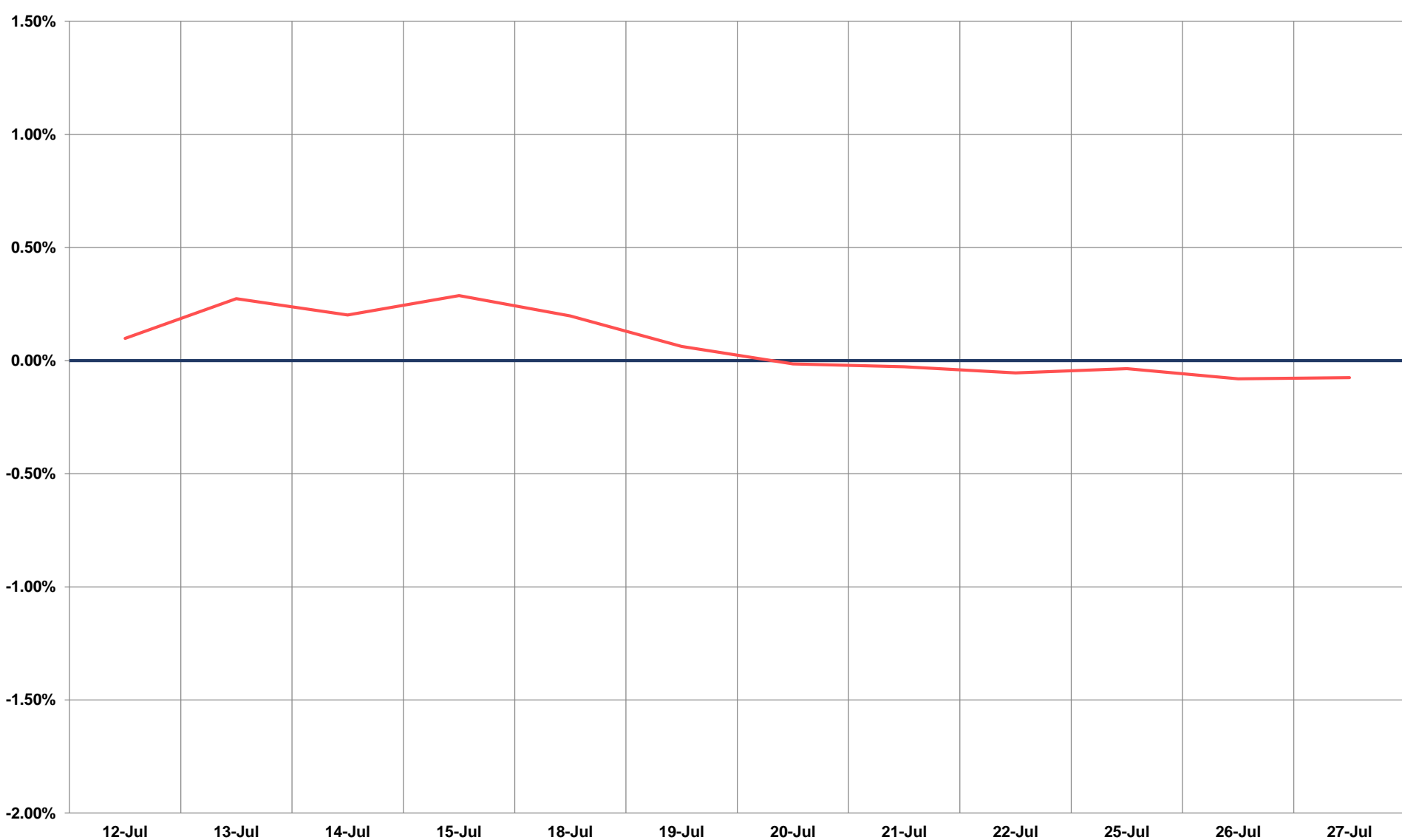
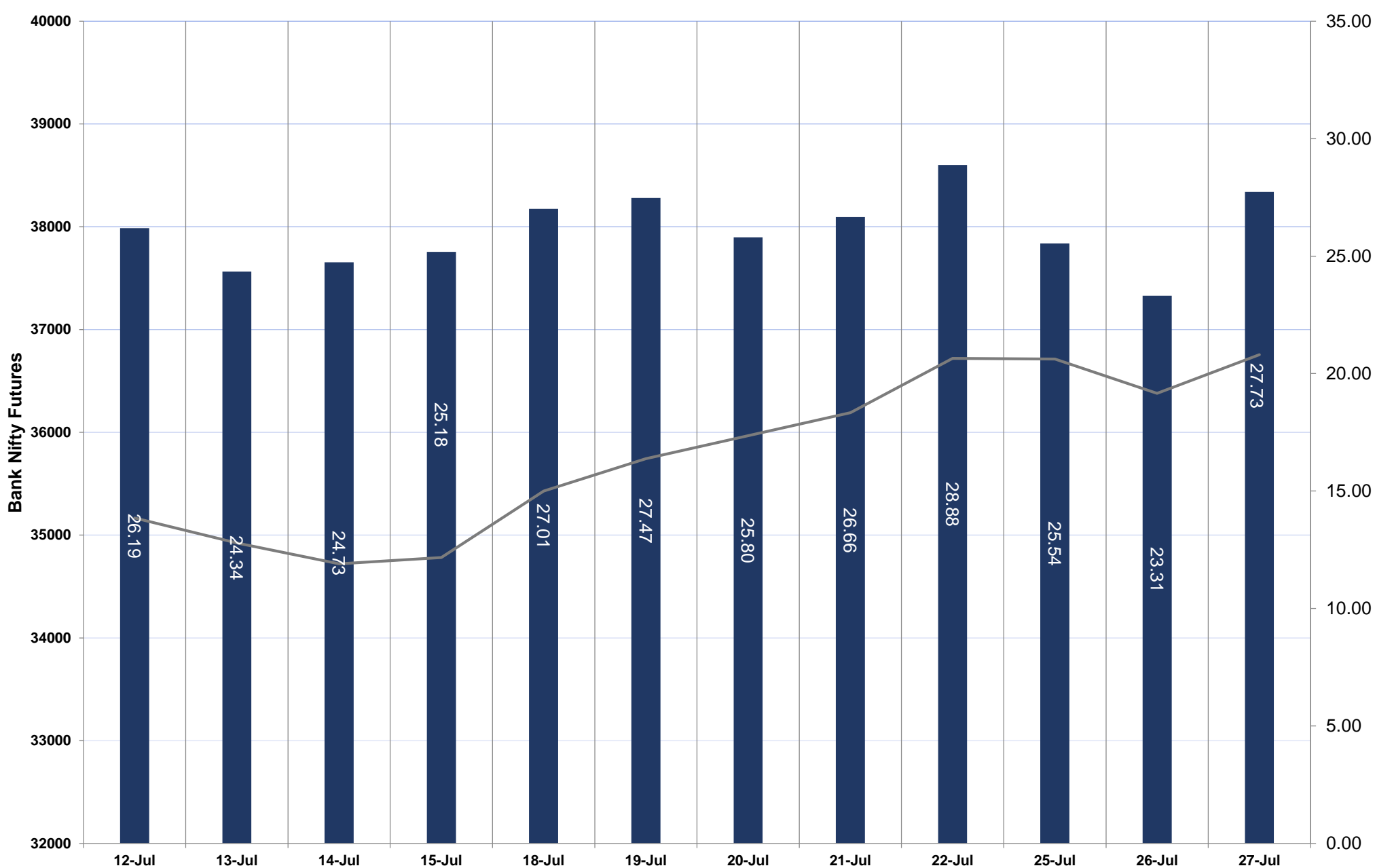
NIFTY FUTURES



TECHNICAL VIEWS



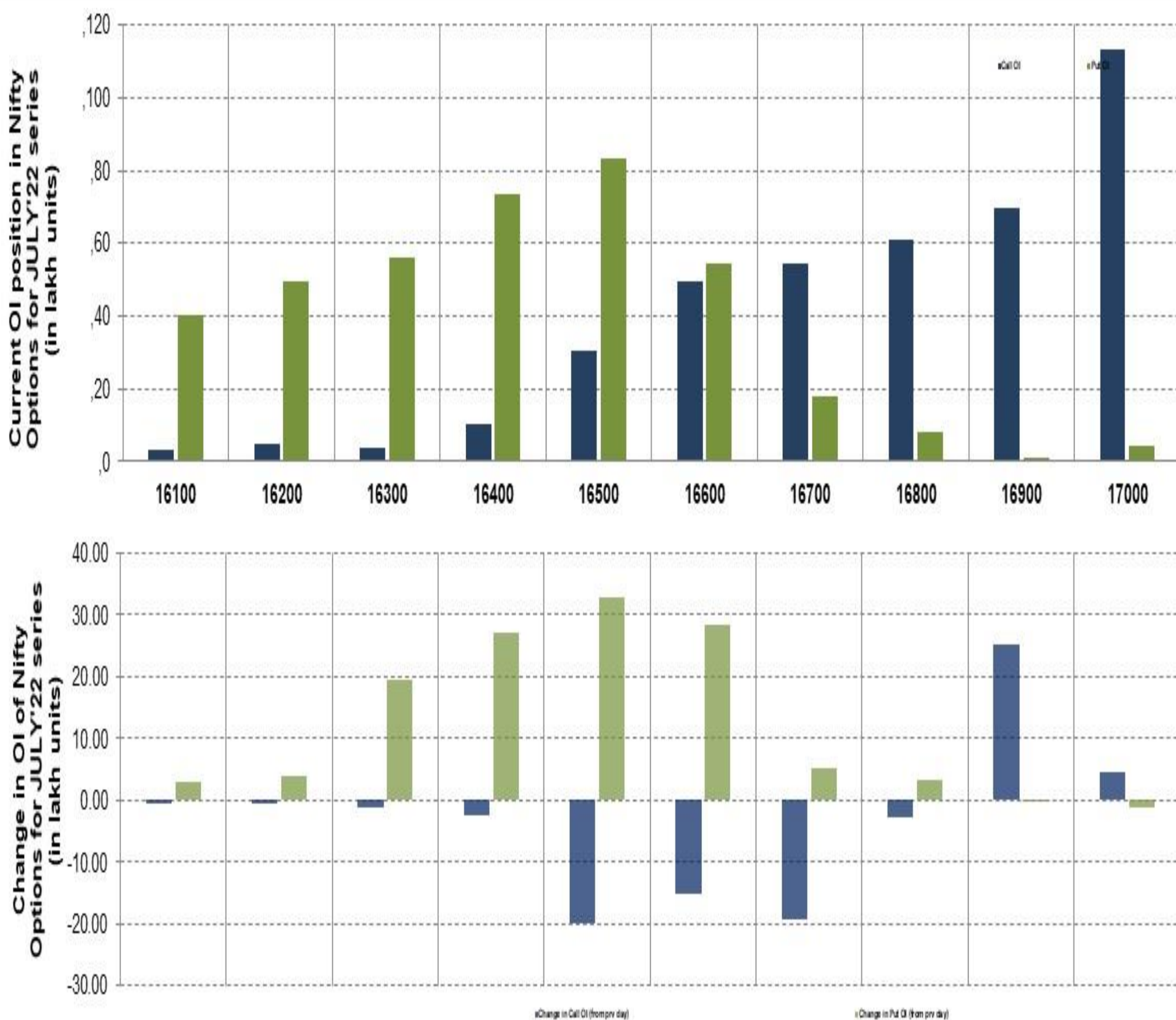
BANK NIFTY FUTURES



TECHNICAL VIEWS



NIFTY OPTIONS



- **Most Active Nifty Call** with an addition of 2.50 million in Open Interests is **Strike Price of 16900**
- **Most Active Nifty Put** with an addition of 3.28 millions in Open Interests is **Strike Price of 16500**
- **Maximum Open Interest an outstanding** was 11.3 millions for Calls at **Strike Price of 17000**
- **Maximum Open Interest an outstanding** was 8.31 millions for puts at **Strike Price of 16500**

Disclaimer



The Information provided by SMS or in newsletter or in any document has been prepared by Shah Investor's Home Ltd (SIHL). The Information provided by SMS or in newsletter does not constitute an offer or solicitation for the purchase or sale of any financial instrument or as an official confirmation of any transaction. The information contained herein is from publicly available data or other sources believed to be reliable, but we do not represent that it is accurate or complete and it should not be relied on as such. SIHL or any of its affiliates/ group companies shall not be in any way responsible for any loss or damage that may arise to any person from any error in the information contained in this report or SMS. This Information provided by SMS, reports or in newsletter is provided for assistance only and is not intended to be and must not alone be taken as the basis for an investment decision. The user assumes the entire risk of any use made of this information. Each recipient of this Information provided by SMS, report or in newsletter should make such investigation as it deems necessary to arrive at an independent evaluation of an investment in the securities of companies referred to in this information provided by SMS, report or in newsletter (including the merits and risks involved), and should consult his own advisors to determine the merits and risks of such investment. The investment discussed or views expressed may not be suitable for all investors. This information is strictly confidential and is being furnished to you solely for your information.

The information should not be reproduced or redistributed or passed on directly or indirectly in any form to any other person or published, copied, in whole or in part, for any purpose. The information provided by report or SMS is not directed or intended for distribution to, or use by, any person or entity who is a citizen or resident of or located in any locality, state, country or other jurisdiction, where such distribution, publication, availability or use would be contrary to law, regulation or which would subject SIHL and affiliates/ group companies to any registration or licensing requirements within such jurisdiction. The distribution of this Information provided by SMS or in newsletter in certain jurisdictions may be restricted by law, and persons in whose possession this Information provided by SMS or in newsletter comes, should inform themselves about and observe, any such restrictions. The information given or Information provided by SMS, report or in newsletter is as of the date of the issue date of report or the date on which SMS provided and there can be no assurance that future results or events will be consistent with this information. This information is subject to change without any prior notice. SIHL reserves the right to make modifications and alterations to this statement as may be required from time to time. However, SIHL is under no obligation to update or keep the information current.

Nevertheless, SIHL is committed to providing independent and transparent recommendation to its client and would be happy to provide any information in response to specific client queries. Neither SIHL nor any of its affiliates, group companies, directors, employees, agents or representatives shall be liable for any damages whether direct, indirect, special or consequential including lost revenue or lost profits that may arise from or in connection with the use of the information. Past performance is not necessarily a guide to future performance. The disclosures of interest statements incorporated in the Information provided by SMS, report or in newsletter are provided solely to enhance the transparency and should not be treated as endorsement of the views expressed in the report. The analyst for this report certifies that all of the views expressed in this report accurately reflect his or her personal views about the subject company or companies and its or their securities, and no part of his or her compensation was, is or will be, directly or indirectly related to specific recommendations or views expressed in this report.