



# MORNING MANTRA



Daily Derivatives & Market Report

AUG 16, 2022



Indian equity benchmarks ended with notable gains on Tuesday. Indices made an optimistic start, as sentiments got boost with a private report stating that during the April-July period, the central government achieved more than a third of the direct tax collection for this financial year as personal tax collection exceeded corporation tax mop-up amid tightened enforcement and compliance measures. Overall direct tax collections, net of refunds, including corporation and personal income tax, grew by 40 per cent in the first four months of FY23 to Rs 5 trillion, which is nearly 35 per cent of the target of Rs 14.2 trillion for the whole fiscal year.

Traders remained optimistic during the day, as the commerce ministry in its latest data has said that India's merchandise exports rose 2.14 per cent to \$36.27 billion in July 2022 as compared to \$35.51 billion in July 2021. Merchandise imports in July 2022 were \$66.27 billion, which is an increase of 43.61 per cent over imports of \$46.15 billion in July 2021. Traders also took a note of Former RBI Governor D Subbarao's statement that India may become a USD five trillion economy by 2028-29 only if the GDP grows at nine per cent per annum consistently for the next five years. He said there are eight key challenges for India to overcome to achieve the dream of \$5 trillion economy.

Positive trade continued over the Dalal Street for the entire trading session, after India's inflation based on wholesale price index (WPI) eased to 13.93% in the month of July 2022 as against 15.18% in June, as prices of food articles, nonfood articles and crude petroleum & natural gas declined. Sentiments remained up-beat as the Income Tax Department said tax collected on income of companies surged by 34 per cent in the first four months of the current fiscal that began in April, indicating that a simplified tax regime with low rates is yielding results. Some support also came as the commerce ministry is proposing a host of direct and indirect incentives such as deferral of import duties and exemption from export taxes to revamp Special Economic Zones through a new legislation.

On the global front, European markets were trading higher buoyed by defensive sectors and miners, although concerns over a potential recession limited further upside. Asian markets settled mostly higher on Tuesday, after Japan's industrial production rose more than initially estimated in June. The latest data from the Ministry of Economy, Trade and Industry said that industrial production increased a seasonally adjusted 9.2 percent monthly in June. In the initial estimate, output grew 8.9 percent. Shipments rose by 5.0 percent monthly in June and the inventories grew 1.9 percent. Meanwhile, the inventory ratio decreased 1.4 percent.

# MARKET SELFIE



## MARKET SUMMARY

Domestic Indices	Close	Points	% Change
SENSEX	59842.21	379.43	0.64
NIFTY	17825.25	127.10	0.72
MIDCAP	25020.92	255.87	1.03
SMLCAP	28194.37	288.46	1.03
BSEFMC	15654.30	182.51	1.18
AUTO	30379.58	761.88	2.57
POWER	4929.77	71.73	1.48
REALTY	3602.23	71.54	2.03
BSE IT	30429.67	78.87	0.26
BANKEX	44963.33	205.20	0.46
OIL GAS	20121.02	348.16	1.76
METAL	19206.62	-33.36	-0.17
INDIA VIX	17.69	0.080	0.45

## ADVANCE - DECLINE

Index	Advance	Decline	Unchanged
NSE	1546	767	59
BSE	1990	1554	161

## MARKET TURNOVER (₹ in Crs)

Segment	Current	Previous	Net %
BSE CASH	15570	4349	258
NSE CASH	58148	55885	4
NSE F&O	122131	117895	4

## KEY INDICES RATIOS

INDEX	P/E	P/B	Dividend Yield
NIFTY	21.34	4.18	1.34
SENSEX	23.26	3.43	1.19

# KEY NUMBERS TRACKER



## FII – DII ACTIVITY IN CASH SEGMENT (₹ in Crs)

FII-DII*	Buy	Sell	Net
DII	5260	5397	(136)
FII	19799	18422	1377

Note: FPI & DII Figures are provisional

## FII ACTIVITY IN DERIVATIVES SEGMENT (₹ in Crs)

FII	Buy	Sell	Net
Index Futures	2726.16	2501.01	225
Index Options	541881.36	542524.49	(643)
Stock Futures	12953.99	11639.49	1315
Stock Options	9422.76	9266.52	156

## PUT-CALL RATIO

Index	Current	Previous
NIFTY	1.25	1.25
BANK NIFTY	1.08	1.22

## DOLLAR INDEX

Dollar Index	Current	Previous	% Change
DXY	106.88	106.55	0.31

## 10-YEARS G-SEC YIELD

Country	Current	Previous	% Change
INDIA	7.289	7.289	0.00
USA	2.804	2.791	0.47

## KEY COMMODITIES TRACKER (in \$)

Commodity	Current	Change Points	% Change
Gold	1776.75	-1.73	-0.10
Silver	20.10	-0.14	-0.69
Crude-Oil	89.43	0.02	0.02
Brent-Crude	94.80	-0.30	-0.32

# CURRENCY FUTURES & INDEX TRENDS TRACKER



## CURRENCY FUTURES

Expiry	Close	Change Points	% Change
26 AUG -22 USD-INR	79.83	0.00	0.00
26 AUG -22 EUR-INR	82.13	0.00	0.00
26 AUG -22 GBP-INR	96.87	0.00	0.00
26 AUG -22 JPY- INR	59.73	0.00	0.00

## INDICES – SUPPORT-RESISTANCE-PIVOT LEVELS

Index	Close	S2	S1	Pivot	R1	R2
NIFTY	17825	17734	17780	17809	17855	17885
SENSEX	59842	59564	56703	59813	59952	60062
NIFTY FUTURES	17859	17730	17795	17845	17909	17960
BANK NIFTY	39240	38943	39092	39268	39416	39593
CNX IT	29909	29644	29776	29959	30091	30274
CNX MIDCAP	31255	30805	31030	31151	31376	31497
CNX SMALLCAP	9512	9432	9472	9499	9539	9566
INDIA VIX	17.68	16.32	17.00	17.68	18.36	19.04

## INDEX TREND ANALYSIS

Index	Daily	Weekly	Monthly
NIFTY	Buy	Buy	Buy
SENSEX	Buy	Buy	Buy
NIFTY FUTURES	Buy	Buy	Buy
BANK NIFTY	Buy	Buy	Buy
CNX IT	Buy	Neutral	Neutral
CNX MIDCAP	Buy	Buy	Buy
CNX SMALLCAP	Buy	Neutral	Neutral
INDIA VIX	Sell	Sell	Sell

## SECURITIES BAN IN F&O TRADES FOR 17-08-2022

BALRAMCHIN, DELTACORP, TATACHEM

# TECHNICAL VIEWS



## NIFTY

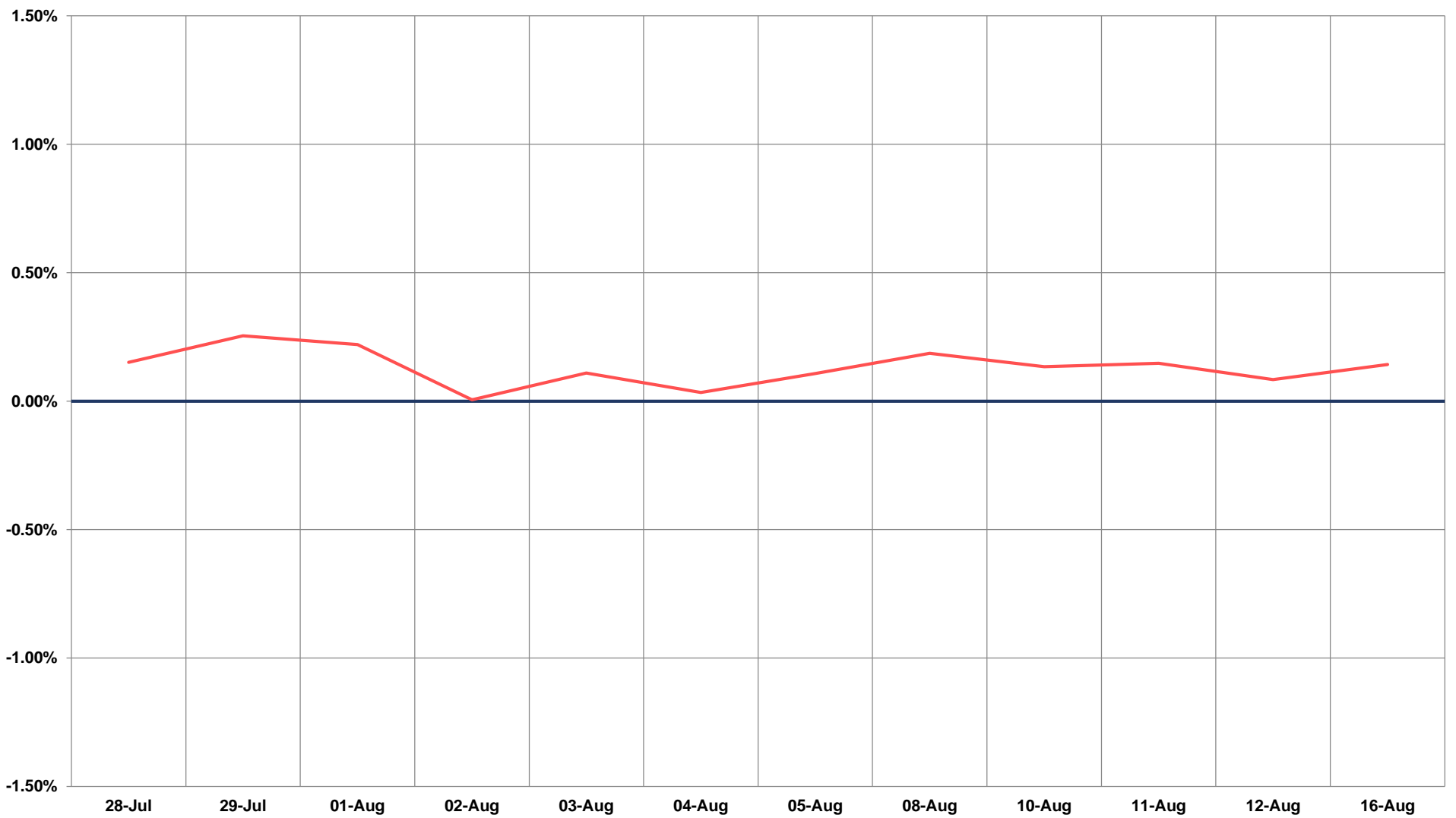
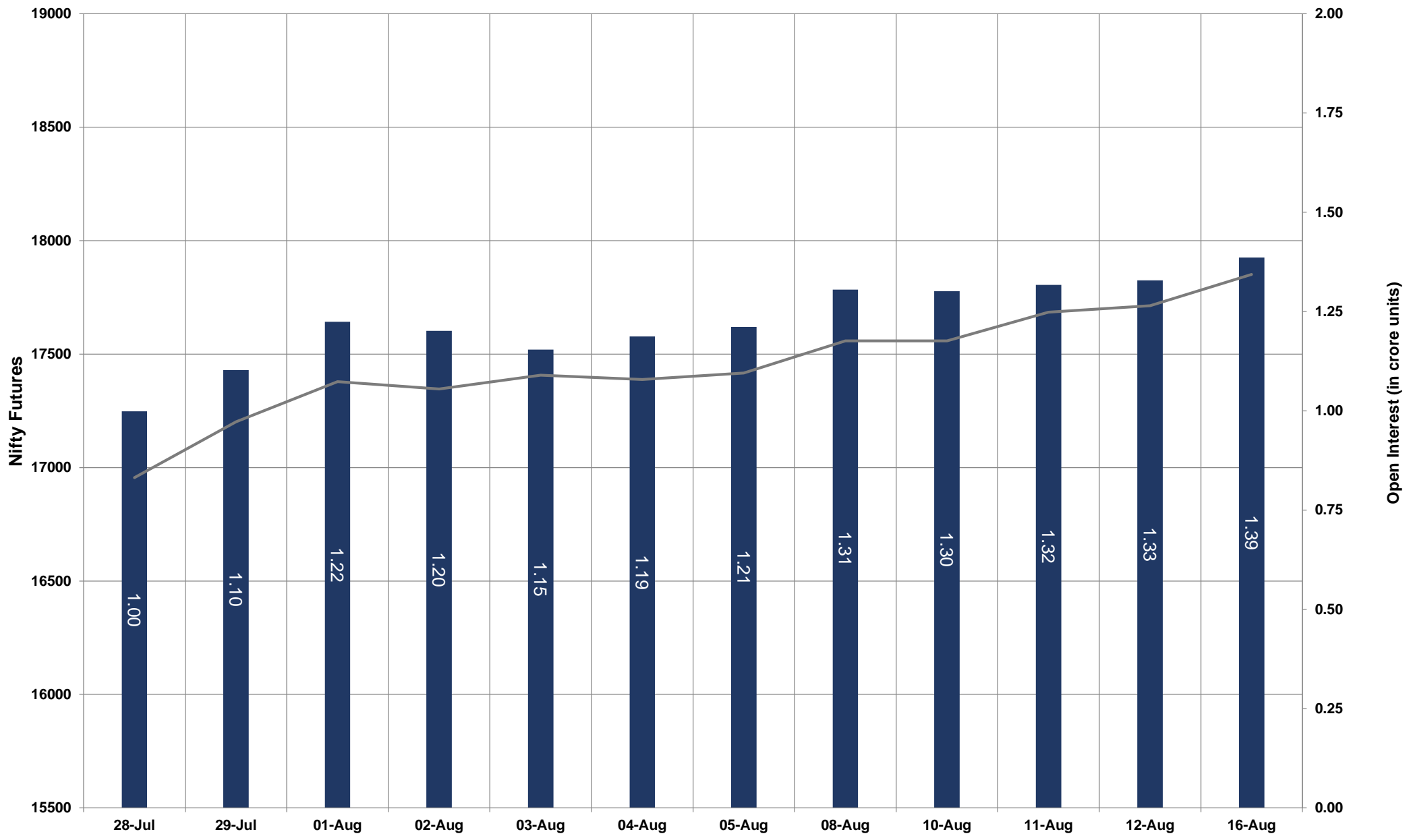


- Nifty Cash = **17825.25 (0.72%)**
- Resistance levels = **17950** and **18020**
- Support levels = **17700** and **17620**

# TECHNICAL VIEWS



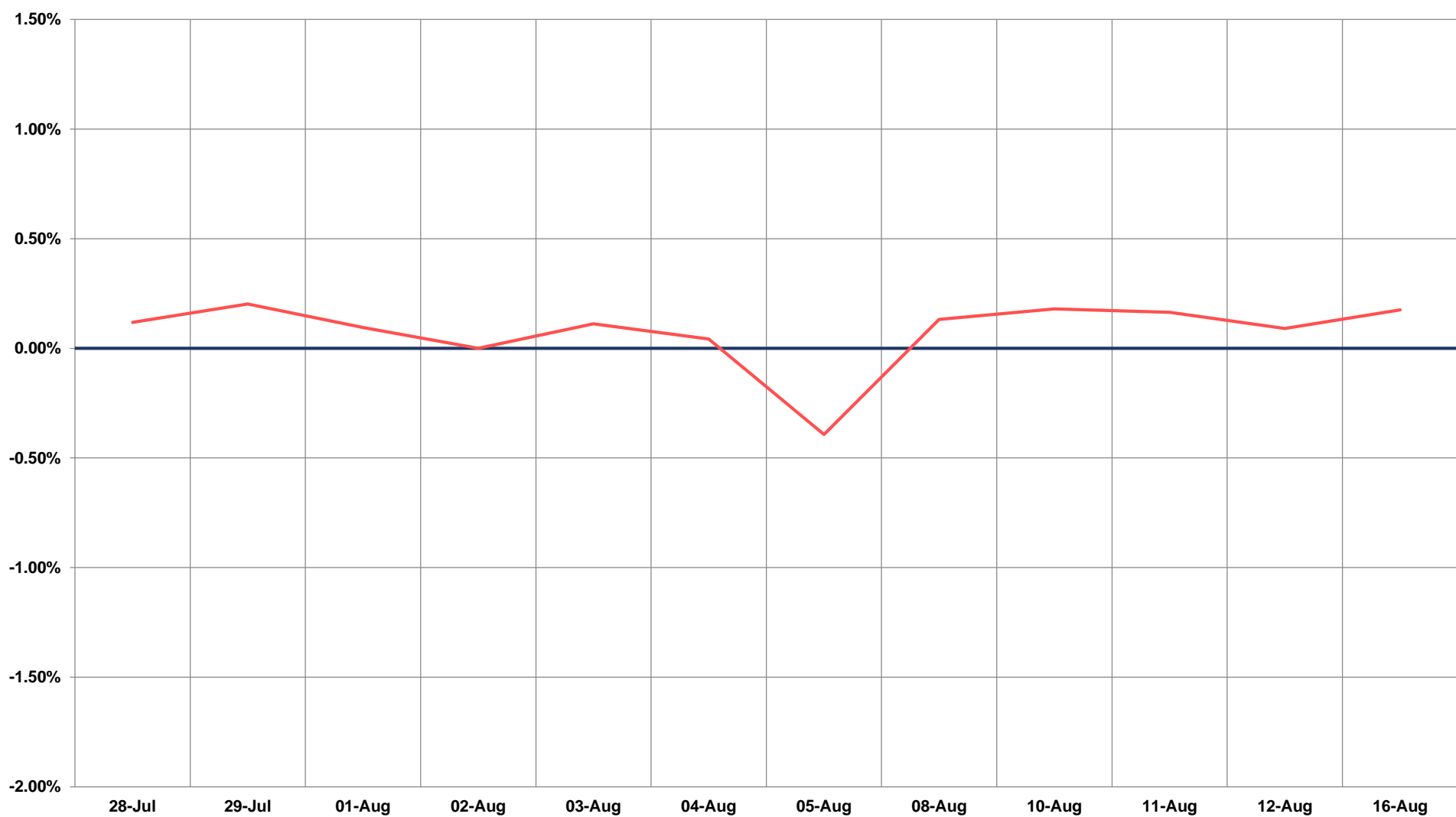
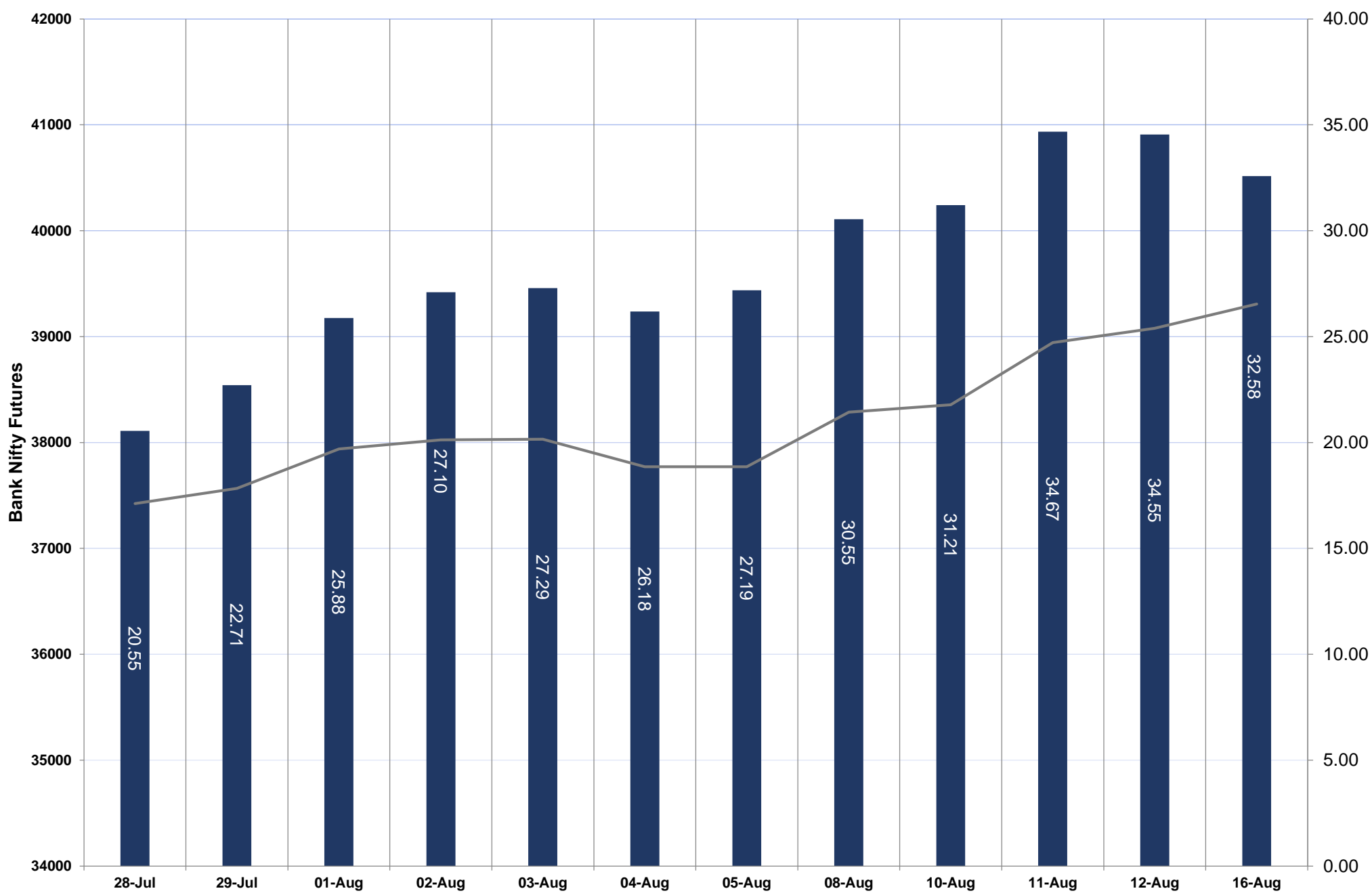
## NIFTY FUTURES



# TECHNICAL VIEWS



## BANK NIFTY FUTURES

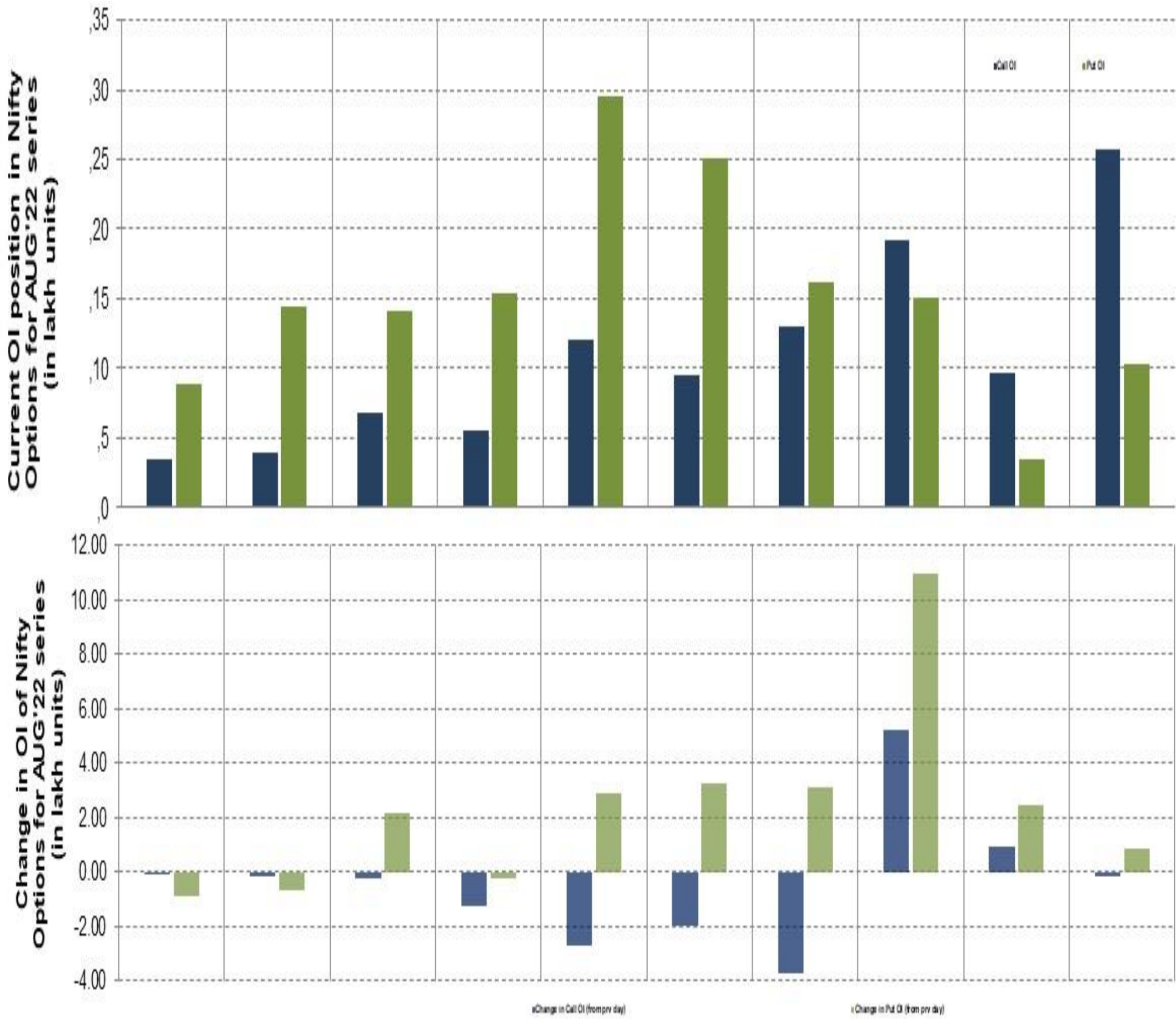




# TECHNICAL VIEWS



## NIFTY OPTIONS



- **Most Active Nifty Call** with an addition of 0.51 million in Open Interests is **Strike Price of 17800**
- **Most Active Nifty Put** with an addition of 1.09 millions in Open Interests is **Strike Price of 17800**
- **Maximum Open Interest an outstanding** was **2.56 millions** for Calls at **Strike Price of 18000**
- **Maximum Open Interest an outstanding** was **2.95 millions** for puts at **Strike Price of 17500**

# Disclaimer



The Information provided by SMS or in newsletter or in any document has been prepared by Shah Investor's Home Ltd (SIHL). The Information provided by SMS or in newsletter does not constitute an offer or solicitation for the purchase or sale of any financial instrument or as an official confirmation of any transaction. The information contained herein is from publicly available data or other sources believed to be reliable, but we do not represent that it is accurate or complete and it should not be relied on as such. SIHL or any of its affiliates/ group companies shall not be in any way responsible for any loss or damage that may arise to any person from any error in the information contained in this report or SMS. This Information provided by SMS, reports or in newsletter is provided for assistance only and is not intended to be and must not alone be taken as the basis for an investment decision. The user assumes the entire risk of any use made of this information. Each recipient of this Information provided by SMS, report or in newsletter should make such investigation as it deems necessary to arrive at an independent evaluation of an investment in the securities of companies referred to in this information provided by SMS, report or in newsletter (including the merits and risks involved), and should consult his own advisors to determine the merits and risks of such investment. The investment discussed or views expressed may not be suitable for all investors. This information is strictly confidential and is being furnished to you solely for your information.

The information should not be reproduced or redistributed or passed on directly or indirectly in any form to any other person or published, copied, in whole or in part, for any purpose. The information provided by report or SMS is not directed or intended for distribution to, or use by, any person or entity who is a citizen or resident of or located in any locality, state, country or other jurisdiction, where such distribution, publication, availability or use would be contrary to law, regulation or which would subject SIHL and affiliates/ group companies to any registration or licensing requirements within such jurisdiction. The distribution of this Information provided by SMS or in newsletter in certain jurisdictions may be restricted by law, and persons in whose possession this Information provided by SMS or in newsletter comes, should inform themselves about and observe, any such restrictions. The information given or Information provided by SMS, report or in newsletter is as of the date of the issue date of report or the date on which SMS provided and there can be no assurance that future results or events will be consistent with this information. This information is subject to change without any prior notice. SIHL reserves the right to make modifications and alterations to this statement as may be required from time to time. However, SIHL is under no obligation to update or keep the information current.

Nevertheless, SIHL is committed to providing independent and transparent recommendation to its client and would be happy to provide any information in response to specific client queries. Neither SIHL nor any of its affiliates, group companies, directors, employees, agents or representatives shall be liable for any damages whether direct, indirect, special or consequential including lost revenue or lost profits that may arise from or in connection with the use of the information. Past performance is not necessarily a guide to future performance. The disclosures of interest statements incorporated in the Information provided by SMS, report or in newsletter are provided solely to enhance the transparency and should not be treated as endorsement of the views expressed in the report. The analyst for this report certifies that all of the views expressed in this report accurately reflect his or her personal views about the subject company or companies and its or their securities, and no part of his or her compensation was, is or will be, directly or indirectly related to specific recommendations or views expressed in this report.