



MORNING MANTRA



Daily Derivatives & Market Report

AUG 23, 2022



Volatile trading session ended on a higher note on Tuesday, with both Sensex and Nifty ending near their intraday high points. After a negative start of the trading day, markets were in green during early morning deals, supported with a private report stating that the Centre may release about Rs 30,000 crore soon as GST (goods and services tax) compensation for June 2022, the last month of the five-year guaranteed compensation pledged by the Union government.

But soon, key indices cut all of their gains and remained volatile during the first half of the trading session. Traders were concerned as foreign institutional investors sold Rs 453.77 crore in the Indian markets on August 22. Some cautiousness also came in as a recent study by the Reserve Bank of India (RBI) shows project loan demand by Indian companies for capex in 2021-22 (FY22) did not pick up like it did in the preceding years.

Sentiments remained pessimistic, as the government introduced new set of rules for domestic entities, including companies and large family offices and start-ups, opting for overseas direct investment route (ODI), which could impact their acquisition decisions in a big way. Some concerns came, after S&P Global Ratings in its latest report has predicted that companies and banks in India are likely to feel the bite of rising rates and inflation, but rated firms are better cushioned to withstand the pressure.

In the second half, markets staged recovery and remained higher till the end, amid a private report stating that the Reserve Bank's rate setting panel is likely to opt for slowing down the pace of hikes and increase the repo rate by 0.25 per cent in September. The central bank has already hiked the repo rate by 1.40 per cent in three consecutive actions since May this year, in response to the uncomfortably high inflation which has been consistently breaching upper end of the tolerance band set by the government to the RBI.

On the global front, European markets were trading mostly in green as investors await Eurozone and British manufacturing surveys later in the day for clues to future economic trends. Asian markets settled mostly lower, after the manufacturing sector in Japan continued to expand in August, albeit at a slower rate, the latest survey from Jibun Bank showed on Tuesday with a manufacturing PMI score of 51.0. That's down from 52.1 in July, although it remains above the boom-or-bust line of 50.

MARKET SELFIE



MARKET SUMMARY

Domestic Indices	Close	Points	% Change
SENSEX	59031.30	257.43	0.44
NIFTY	17577.50	86.80	0.50
MIDCAP	24770.48	253.60	1.03
SMLCAP	28062.93	218.20	0.78
BSEFMC	15659.68	37.33	0.24
AUTO	29657.49	495.64	1.70
POWER	5022.05	6.61	0.13
REALTY	3512.14	12.94	0.37
BSE IT	29505.69	-500.62	-1.67
BANKEX	44382.06	482.56	1.10
OIL GAS	19658.11	224.94	1.16
METAL	18755.64	381.74	2.08
INDIA VIX	19.05	0.01	0.05

ADVANCE - DECLINE

Index	Advance	Decline	Unchanged
NSE	1573	647	74
BSE	2112	1282	156

MARKET TURNOVER (₹ in Crs)

Segment	Current	Previous	Net %
BSE CASH	4566	4232	8
NSE CASH	56359	55287	2
NSE F&O	275082	237052	16

KEY INDICES RATIOS

INDEX	P/E	P/B	Dividend Yield
NIFTY	20.98	4.11	1.43
SENSEX	22.89	3.38	1.21

KEY NUMBERS TRACKER



FII – DII ACTIVITY IN CASH SEGMENT (₹ in Crs)

FII-DII*	Buy	Sell	Net
DII	5576	5791	(215)
FII	7652	7089	563

Note: FPI & DII Figures are provisional

FII ACTIVITY IN DERIVATIVES SEGMENT (₹ in Crs)

FII	Buy	Sell	Net
Index Futures	5566.14	5676.59	(110)
Index Options	900094.14	894025.84	6068
Stock Futures	55409.10	55041.84	367
Stock Options	11108.74	10924.14	185

PUT-CALL RATIO

Index	Current	Previous
NIFTY	1.01	0.79
BANK NIFTY	0.89	0.64

DOLLAR INDEX

Dollar Index	Current	Previous	% Change
DXY	109.12	109.04	0.07

10-YEARS G-SEC YIELD

Country	Current	Previous	% Change
INDIA	7.281	7.270	0.15
USA	3.022	3.035	-0.43

KEY COMMODITIES TRACKER (in \$)

Commodity	Current	Change Points	% Change
Gold	1735.67	0.48	0.03
Silver	18.94	-0.02	-0.08
Crude-Oil	92.02	1.66	1.84
Brent-Crude	97.98	1.50	1.55

CURRENCY FUTURES & INDEX TRENDS TRACKER



CURRENCY FUTURES

Expiry	Close	Change Points	% Change
26 AUG -22 USD-INR	79.90	0.02	0.03
26 AUG -22 EUR-INR	79.39	-0.61	-0.76
26 AUG -22 GBP-INR	94.14	-0.20	-0.21
26 AUG -22 JPY- INR	58.26	-0.16	-0.28

INDICES – SUPPORT-RESISTANCE-PIVOT LEVELS

Index	Close	S2	S1	Pivot	R1	R2
NIFTY	17578	17236	17407	17516	17687	17796
SENSEX	59031	57774	58403	58801	59429	59828
NIFTY FUTURES	17642	17296	17469	17556	17729	17817
BANK NIFTY	38698	37587	38142	38506	39061	39425
CNX IT	28958	28479	28718	28954	29193	29428
CNX MIDCAP	30735	29844	30289	30544	30990	31244
CNX SMALLCAP	9410	9157	9283	9358	9485	9560
INDIA VIX	19.05	17.53	18.29	18.94	19.70	20.35

INDEX TREND ANALYSIS

Index	Daily	Weekly	Monthly
NIFTY	Neutral	Buy	Buy
SENSEX	Neutral	Buy	Buy
NIFTY FUTURES	Neutral	Buy	Buy
BANK NIFTY	Neutral	Buy	Buy
CNX IT	Neutral	Neutral	Neutral
CNX MIDCAP	Neutral	Buy	Buy
CNX SMALLCAP	Neutral	Neutral	Neutral
INDIA VIX	Neutral	Neutral	Sell

SECURITIES BAN IN F&O TRADES FOR 24-08-2022

NIL

TECHNICAL VIEWS



NIFTY

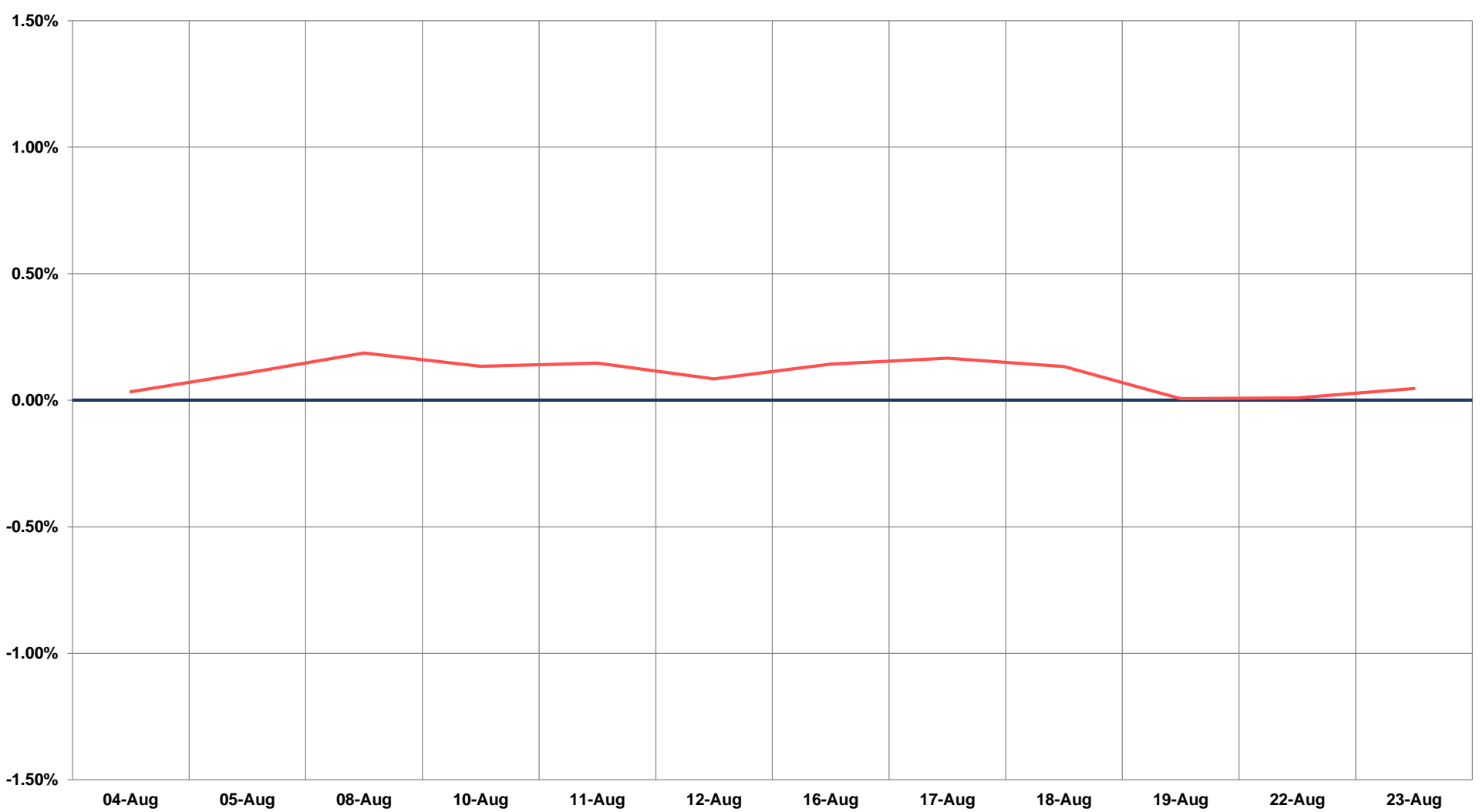
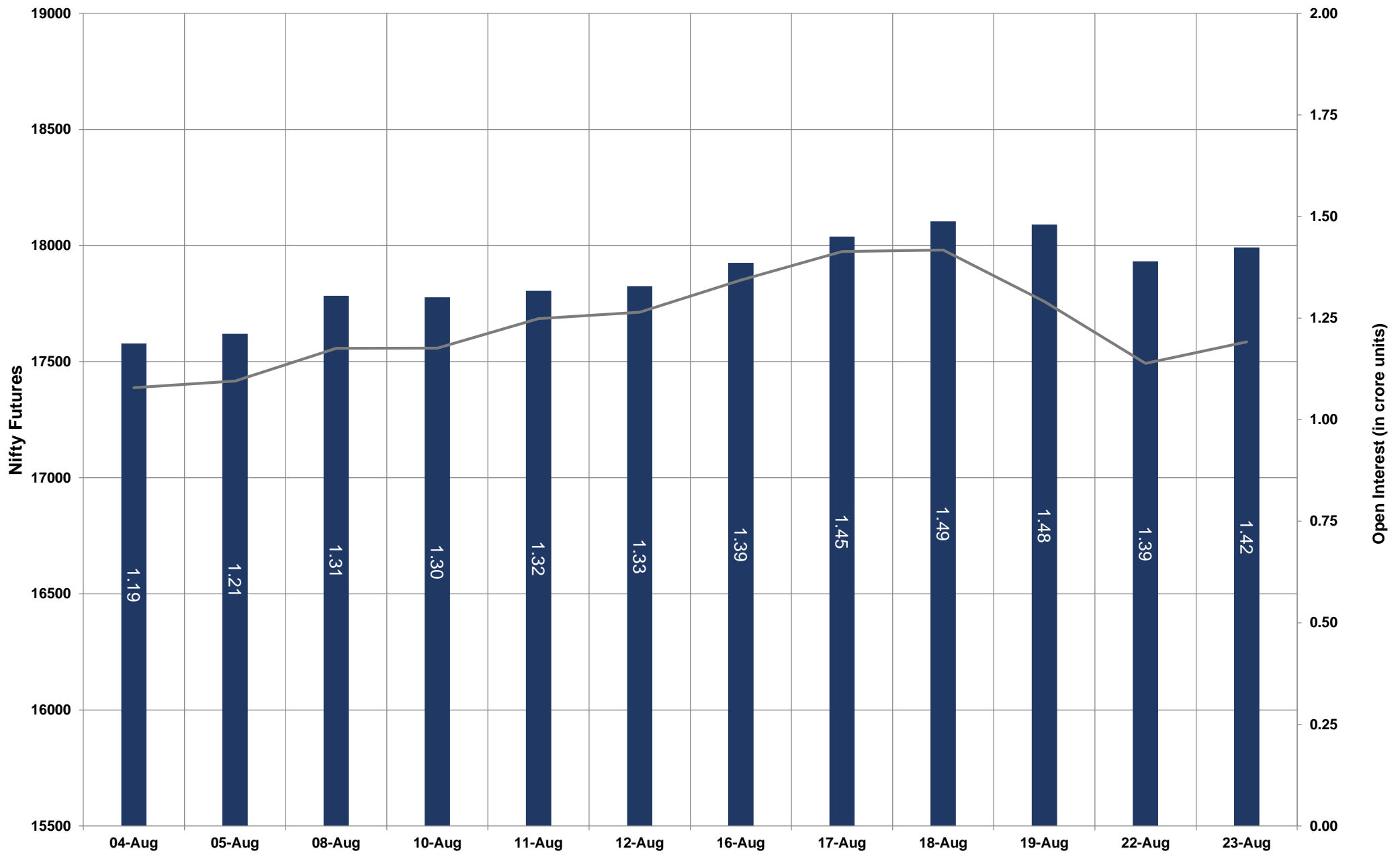


- Nifty Cash = **17577.50 (0.50%)**
- Resistance levels = **17660** and **17750**
- Support levels = **17420** and **17340**

TECHNICAL VIEWS



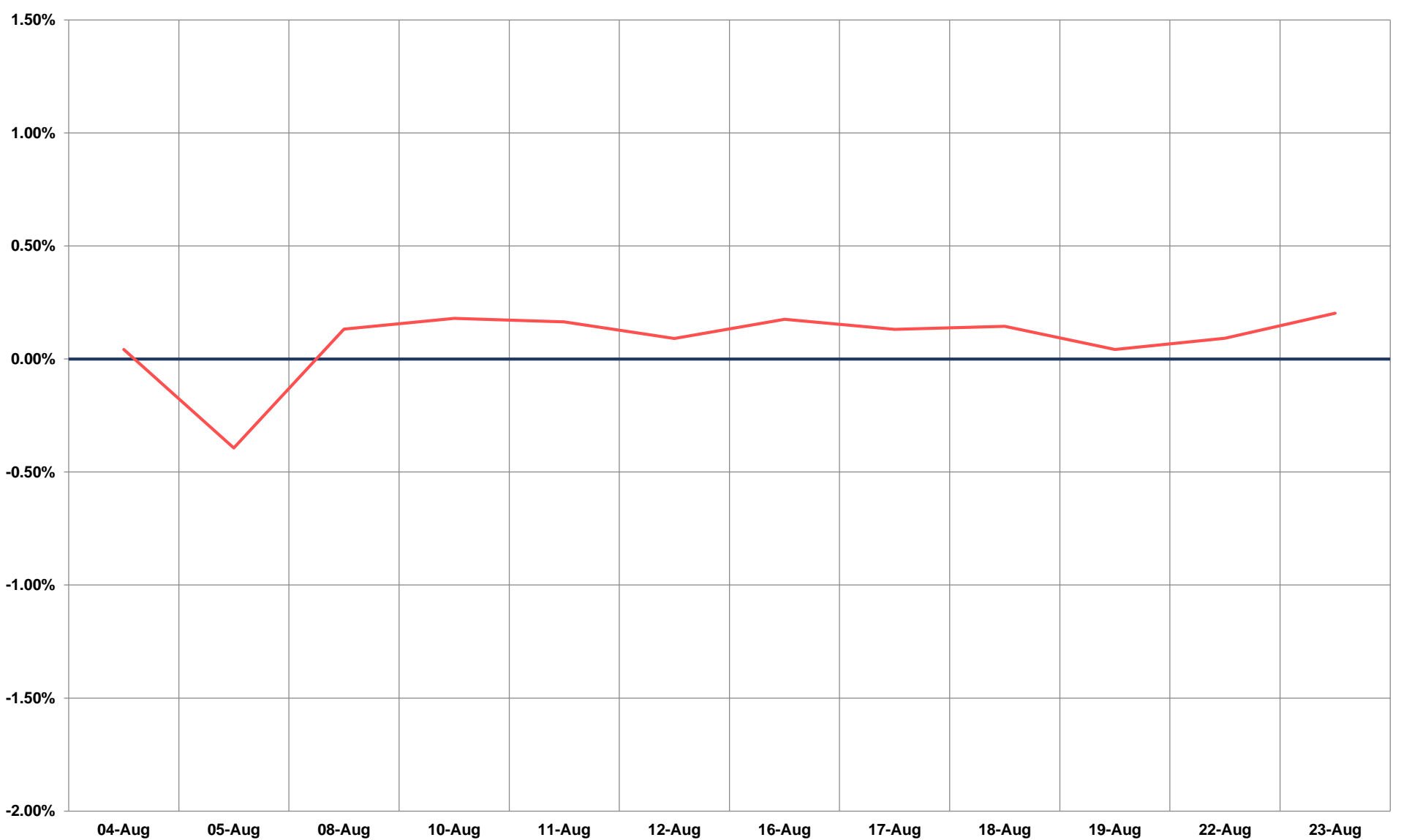
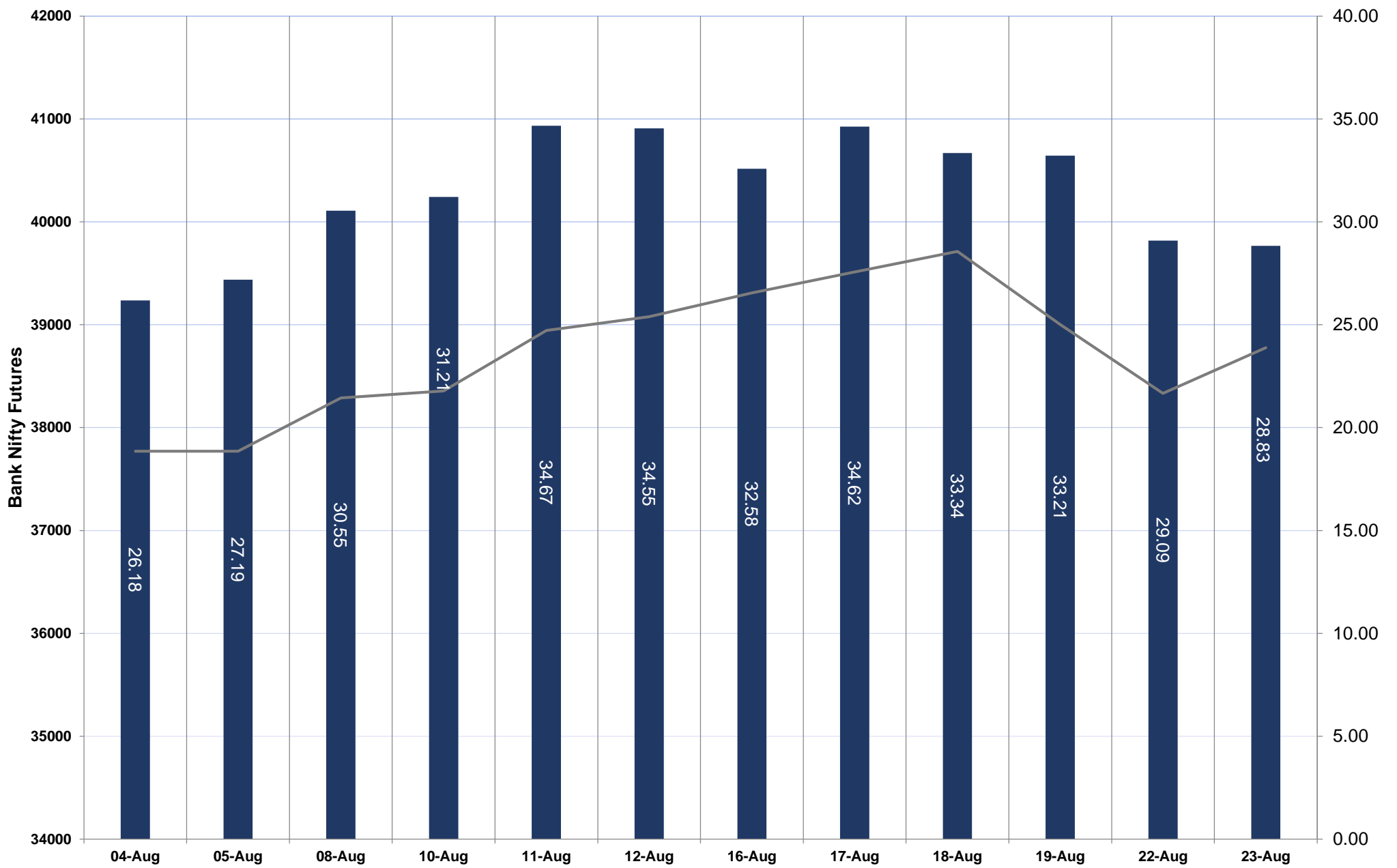
NIFTY FUTURES



TECHNICAL VIEWS



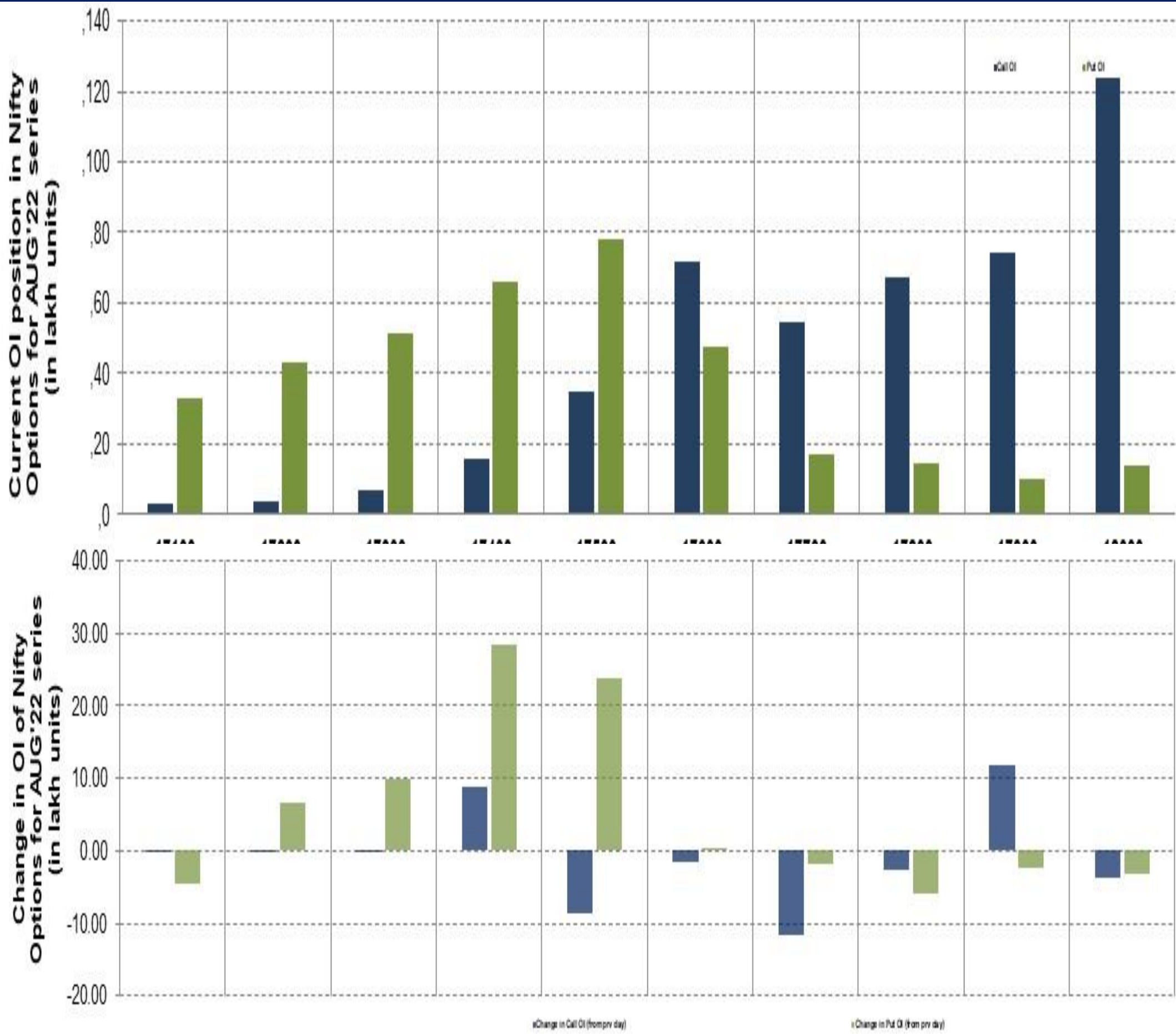
BANK NIFTY FUTURES



TECHNICAL VIEWS



NIFTY OPTIONS



- **Most Active Nifty Call** with an addition of 1.19 million in Open Interests is **Strike Price of 17900**
- **Most Active Nifty Put** with an addition of 2.83 millions in Open Interests is **Strike Price of 17400**
- **Maximum Open Interest an outstanding** was 12.35 millions for Calls at **Strike Price of 18000**
- **Maximum Open Interest an outstanding** was 7.80 millions for puts at **Strike Price of 17500**

Disclaimer



The Information provided by SMS or in newsletter or in any document has been prepared by Shah Investor's Home Ltd (SIHL). The Information provided by SMS or in newsletter does not constitute an offer or solicitation for the purchase or sale of any financial instrument or as an official confirmation of any transaction. The information contained herein is from publicly available data or other sources believed to be reliable, but we do not represent that it is accurate or complete and it should not be relied on as such. SIHL or any of its affiliates/ group companies shall not be in any way responsible for any loss or damage that may arise to any person from any error in the information contained in this report or SMS. This Information provided by SMS, reports or in newsletter is provided for assistance only and is not intended to be and must not alone be taken as the basis for an investment decision. The user assumes the entire risk of any use made of this information. Each recipient of this Information provided by SMS, report or in newsletter should make such investigation as it deems necessary to arrive at an independent evaluation of an investment in the securities of companies referred to in this information provided by SMS, report or in newsletter (including the merits and risks involved), and should consult his own advisors to determine the merits and risks of such investment. The investment discussed or views expressed may not be suitable for all investors. This information is strictly confidential and is being furnished to you solely for your information.

The information should not be reproduced or redistributed or passed on directly or indirectly in any form to any other person or published, copied, in whole or in part, for any purpose. The information provided by report or SMS is not directed or intended for distribution to, or use by, any person or entity who is a citizen or resident of or located in any locality, state, country or other jurisdiction, where such distribution, publication, availability or use would be contrary to law, regulation or which would subject SIHL and affiliates/ group companies to any registration or licensing requirements within such jurisdiction. The distribution of this Information provided by SMS or in newsletter in certain jurisdictions may be restricted by law, and persons in whose possession this Information provided by SMS or in newsletter comes, should inform themselves about and observe, any such restrictions. The information given or Information provided by SMS, report or in newsletter is as of the date of the issue date of report or the date on which SMS provided and there can be no assurance that future results or events will be consistent with this information. This information is subject to change without any prior notice. SIHL reserves the right to make modifications and alterations to this statement as may be required from time to time. However, SIHL is under no obligation to update or keep the information current.

Nevertheless, SIHL is committed to providing independent and transparent recommendation to its client and would be happy to provide any information in response to specific client queries. Neither SIHL nor any of its affiliates, group companies, directors, employees, agents or representatives shall be liable for any damages whether direct, indirect, special or consequential including lost revenue or lost profits that may arise from or in connection with the use of the information. Past performance is not necessarily a guide to future performance. The disclosures of interest statements incorporated in the Information provided by SMS, report or in newsletter are provided solely to enhance the transparency and should not be treated as endorsement of the views expressed in the report. The analyst for this report certifies that all of the views expressed in this report accurately reflect his or her personal views about the subject company or companies and its or their securities, and no part of his or her compensation was, is or will be, directly or indirectly related to specific recommendations or views expressed in this report.