



# MORNING MANTRA



Daily Derivatives & Market Report

AUG 26, 2022



Last trading day of week ended on a higher note, with both Sensex and Nifty closing marginally higher. Markets made a strong start of the trading day, aided with a report stating that the Income-tax department has collected around Rs 28 crore in taxes after about 1 lakh returns were filed by taxpayers under the newly introduced return filing form called ITR-U that was notified this year as part of the Budget 2022-23. Some support also came in as RBI data showed bank credit growth accelerated to 14.2 per cent in the quarter ended June 2022 from 6 per cent in the same period of the previous year.

Positive trade continued over the Dalal Street for the most part of the trading session. Domestic sentiments remained optimistic, as Services Export Promotion Council (SEPC) said that implementation of the proposed India-UK free trade agreement will help to boost the country's services exports, particularly from legal, accounting and auditing sectors. Adding some more relief, a private report stated that the Indian software-as-a-services (SaaS) market is expected to grow multi-fold by 2025, accounting for almost 7 to 10 per cent of the global market from 2 to 4 per cent currently.

However, in the last hours of the trade, key indices turned negative and again back in green to end higher, after the Reserve Bank of India (RBI) in its latest report on 'the private corporate sector performance' has showed that the manufacturing sector recorded impressive sales growth of 41.6 per cent (y-o-y) in Q1 FY23, aided by both volume and price effects along with broad based demand expansion across industries. Besides, sales growth (y-o-y) of listed private non-financial companies surged to 41 per cent in Q1 FY23 from 22.3 per cent in the previous quarter.

On the global front, European markets were trading mostly higher as global attention turned to US Federal Reserve Chairman Jerome Powell's speech at the Jackson Hole economic symposium. Asian markets ended mostly higher, even after Hong Kong's merchandise exports decreased for the third straight month in July, while imports fell for the first time in four months. The data from the Census and Statistics Department showed that exports fell 8.9 percent year-on-year in July, faster than the 6.4 percent decrease in June. Imports declined notably by 9.9 percent annually in July, reversing a 0.5 percent rise in the previous month.

# MARKET SELFIE



## MARKET SUMMARY

Domestic Indices	Close	Points	% Change
SENSEX	58833.87	59.15	0.10
NIFTY	17558.90	36.45	0.21
MIDCAP	25119.00	99.10	0.40
SMLCAP	28415.89	100.28	0.35
BSEFMC	15583.35	-23.10	-0.15
AUTO	29677.14	82.54	0.28
POWER	5096.97	59.30	1.18
REALTY	3612.84	-14.67	-0.40
BSE IT	29244.86	51.47	0.18
BANKEX	44674.39	116.05	0.26
OIL GAS	19728.00	167.97	0.86
METAL	19086.30	304.87	1.62
INDIA VIX	18.22	-1.35	-6.90

## ADVANCE - DECLINE

Index	Advance	Decline	Unchanged
NSE	1593	548	62
BSE	1991	1428	148

## MARKET TURNOVER (₹ in Crs)

Segment	Current	Previous	Net %
BSE CASH	3868	3979	(3)
NSE CASH	54542	55127	(1)
NSE F&O	122678	220216	(44)

## KEY INDICES RATIOS

INDEX	P/E	P/B	Dividend Yield
NIFTY	20.96	4.10	1.43
SENSEX	22.79	3.37	1.22

# KEY NUMBERS TRACKER



## FII – DII ACTIVITY IN CASH SEGMENT (₹ in Crs)

FII-DII*	Buy	Sell	Net
DII	5409	4955	454
FII	6126	6177	(51)

Note: FPI & DII Figures are provisional

## FII ACTIVITY IN DERIVATIVES SEGMENT (₹ in Crs)

FII	Buy	Sell	Net
Index Futures	4029.44	3009.06	1020
Index Options	619528.77	616006.30	3522
Stock Futures	10545.76	9942.17	604
Stock Options	7210.71	7217.68	(7)

## PUT-CALL RATIO

Index	Current	Previous
NIFTY	0.95	0.93
BANK NIFTY	0.75	0.82

## DOLLAR INDEX

Dollar Index	Current	Previous	% Change
DXY	108.06	108.47	-0.38

## 10-YEARS G-SEC YIELD

Country	Current	Previous	% Change
INDIA	7.217	7.292	-1.03
USA	3.050	3.024	0.86

## KEY COMMODITIES TRACKER (in \$)

Commodity	Current	Change Points	% Change
Gold	1746.64	-9.64	-0.55
Silver	19.13	-0.06	-0.33
Crude-Oil	91.72	-0.80	-0.86
Brent-Crude	98.69	-0.65	-0.65

# CURRENCY FUTURES & INDEX TRENDS TRACKER



## CURRENCY FUTURES

Expiry	Close	Change Points	% Change
28 SEP -22 USD-INR	80.08	-0.05	-0.06
28 SEP -22 EUR-INR	80.34	0.08	0.10
28 SEP -22 GBP-INR	94.83	-0.13	-0.13
28 SEP -22 JPY- INR	58.70	-0.23	-0.39

## INDICES – SUPPORT-RESISTANCE-PIVOT LEVELS

Index	Close	S2	S1	Pivot	R1	R2
NIFTY	17559	17422	17490	17588	17657	17755
SENSEX	58834	58360	58597	58959	59196	59558
NIFTY FUTURES	17678	17519	17598	17682	17761	17845
BANK NIFTY	38987	38567	38777	39057	39267	39547
CNX IT	28692	28371	28531	28799	28960	29228
CNX MIDCAP	31113	30904	31008	31151	31255	31398
CNX SMALLCAP	9597	9536	9566	9596	9626	9656
INDIA VIX	18.22	14.13	16.18	17.87	19.92	21.61

## INDEX TREND ANALYSIS

Index	Daily	Weekly	Monthly
NIFTY	Neutral	Buy	Buy
SENSEX	Neutral	Buy	Buy
NIFTY FUTURES	Neutral	Buy	Buy
BANK NIFTY	Buy	Buy	Buy
CNX IT	Neutral	Neutral	Neutral
CNX MIDCAP	Buy	Buy	Buy
CNX SMALLCAP	Buy	Neutral	Neutral
INDIA VIX	Sell	Neutral	Sell

## SECURITIES BAN IN F&O TRADES FOR 29-08-2022

NIL



# TECHNICAL VIEWS



## NIFTY

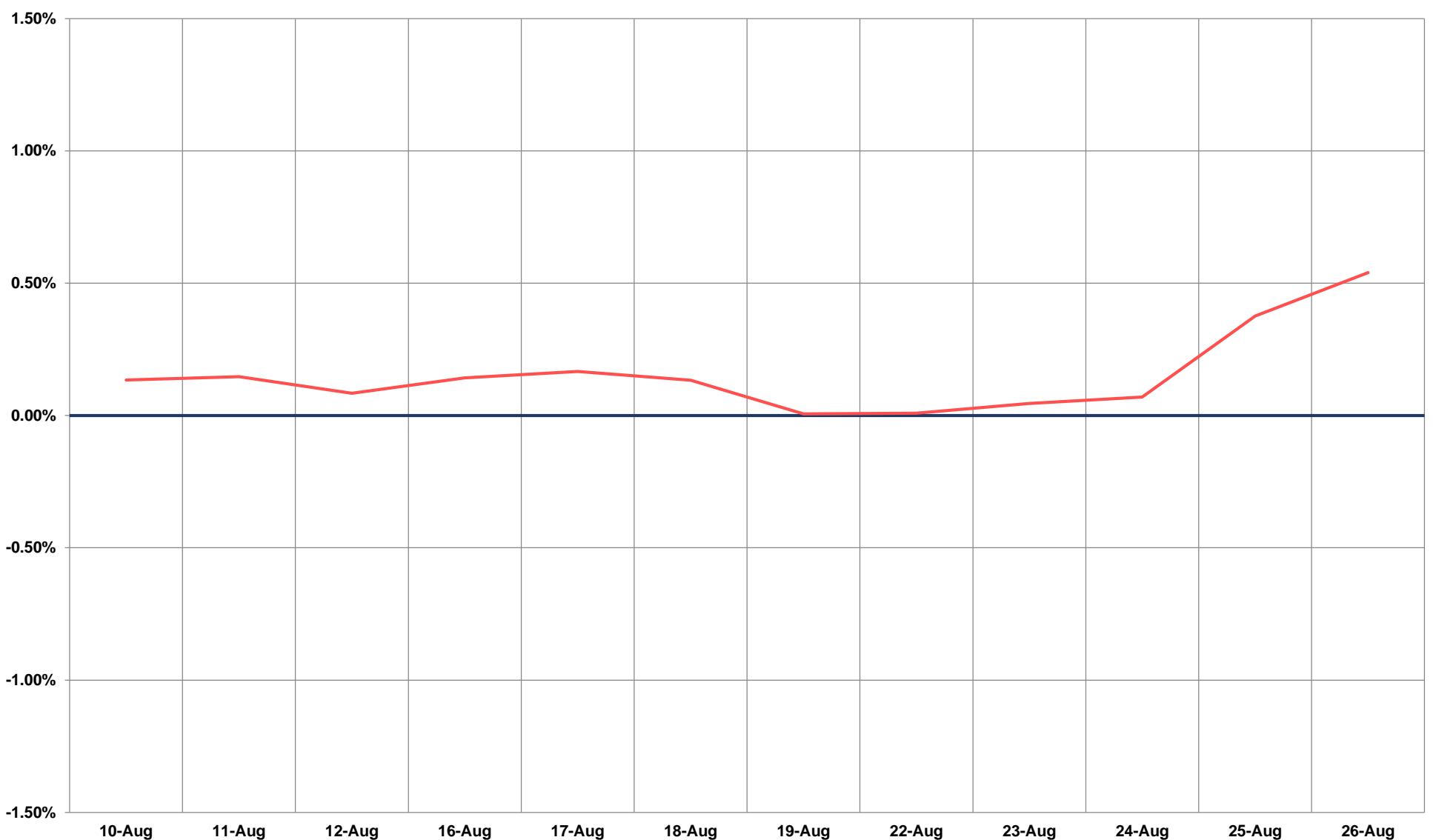
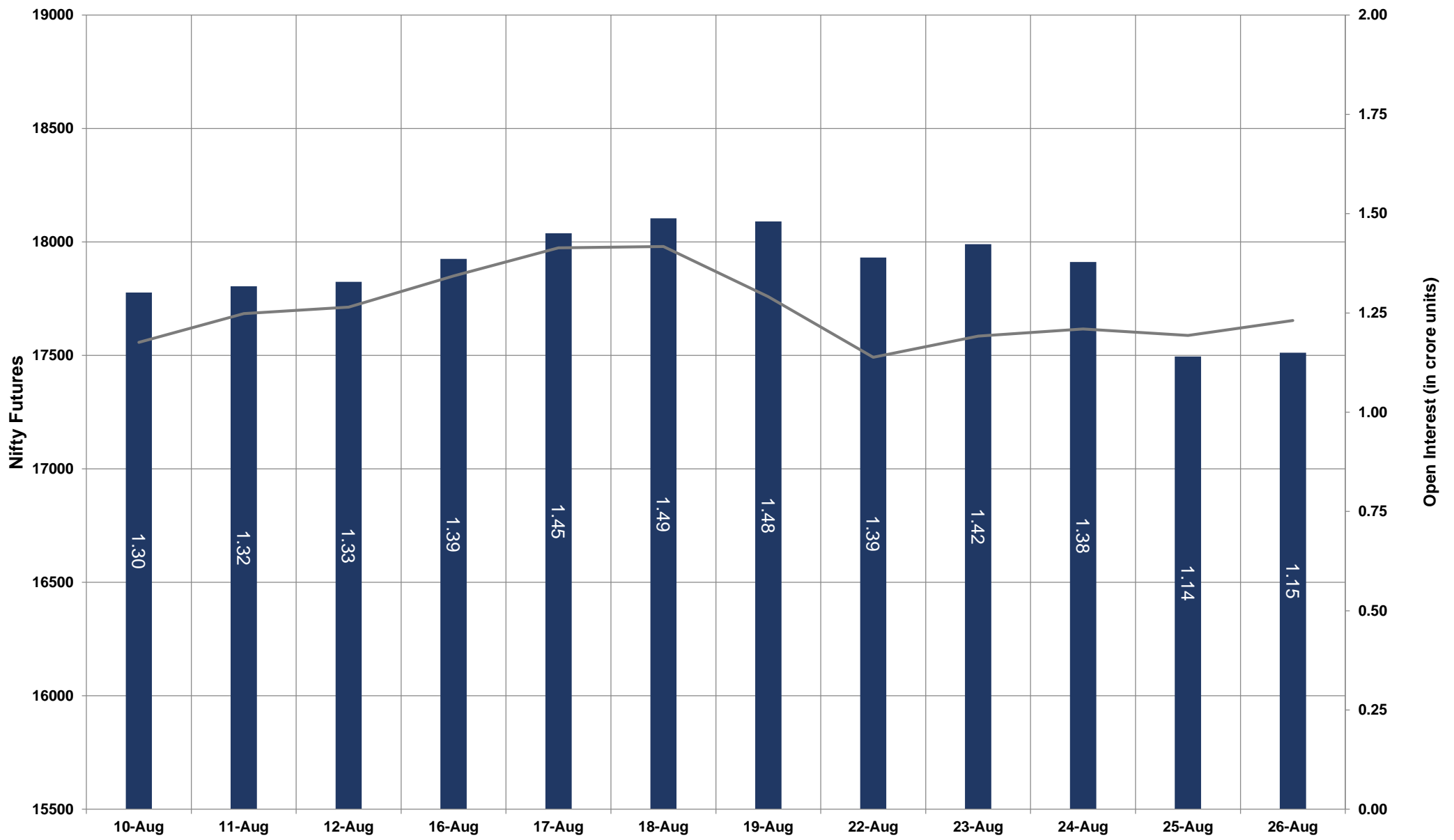


- Nifty Cash = **17558.90 (0.21%)**
- Resistance levels = **17660** and **17750**
- Support levels = **17420** and **17340**

# TECHNICAL VIEWS



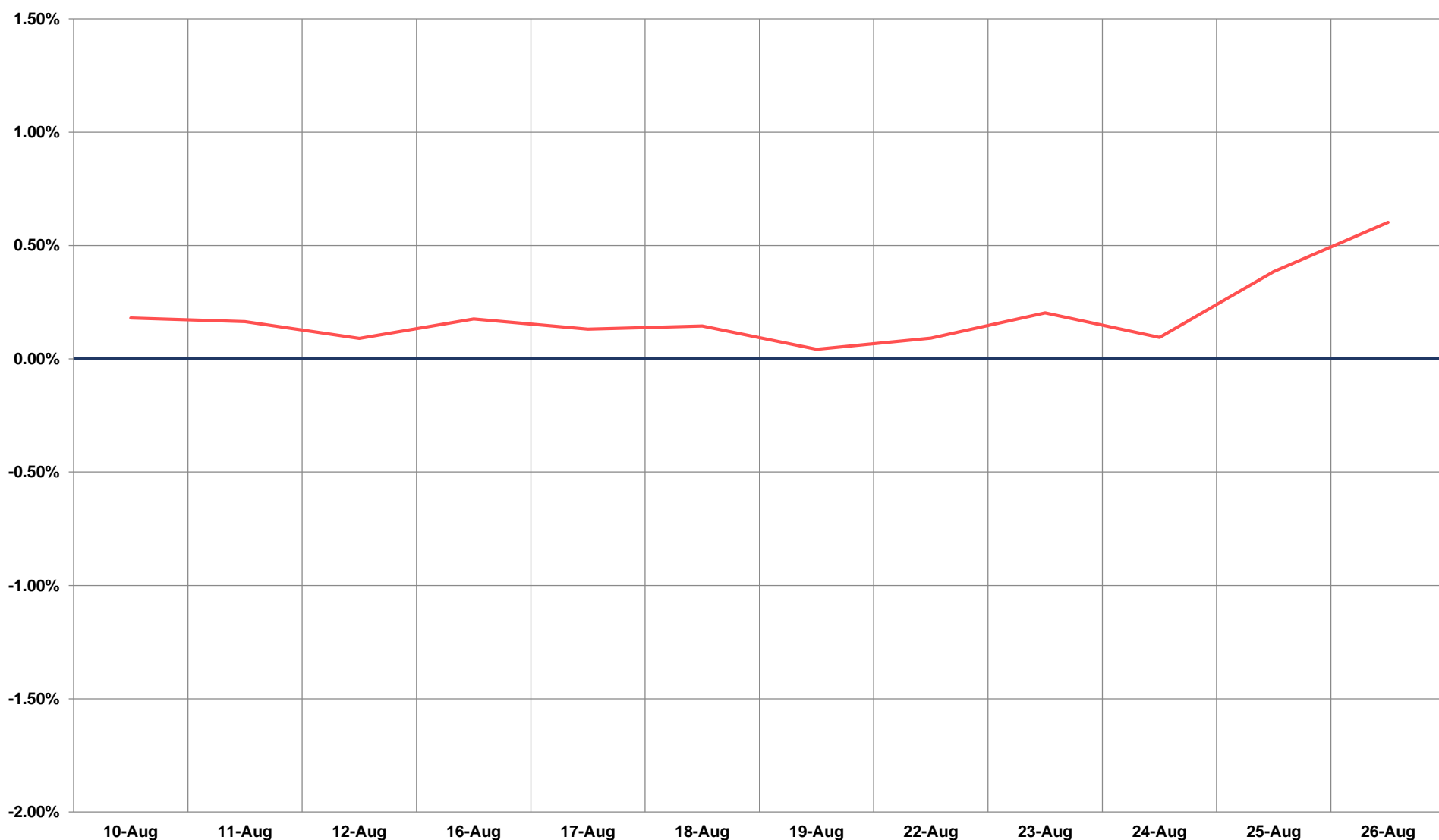
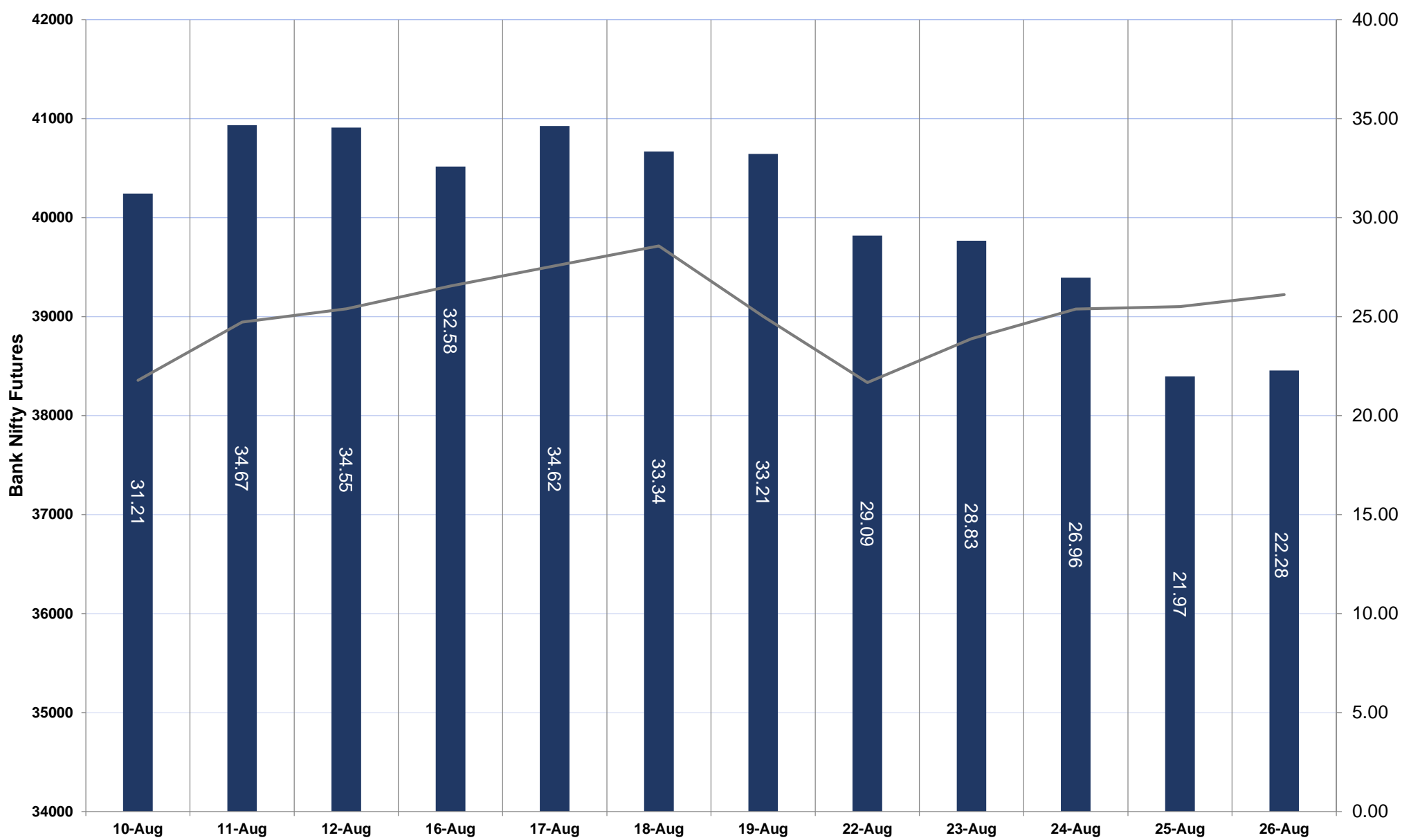
## NIFTY FUTURES



# TECHNICAL VIEWS



## BANK NIFTY FUTURES

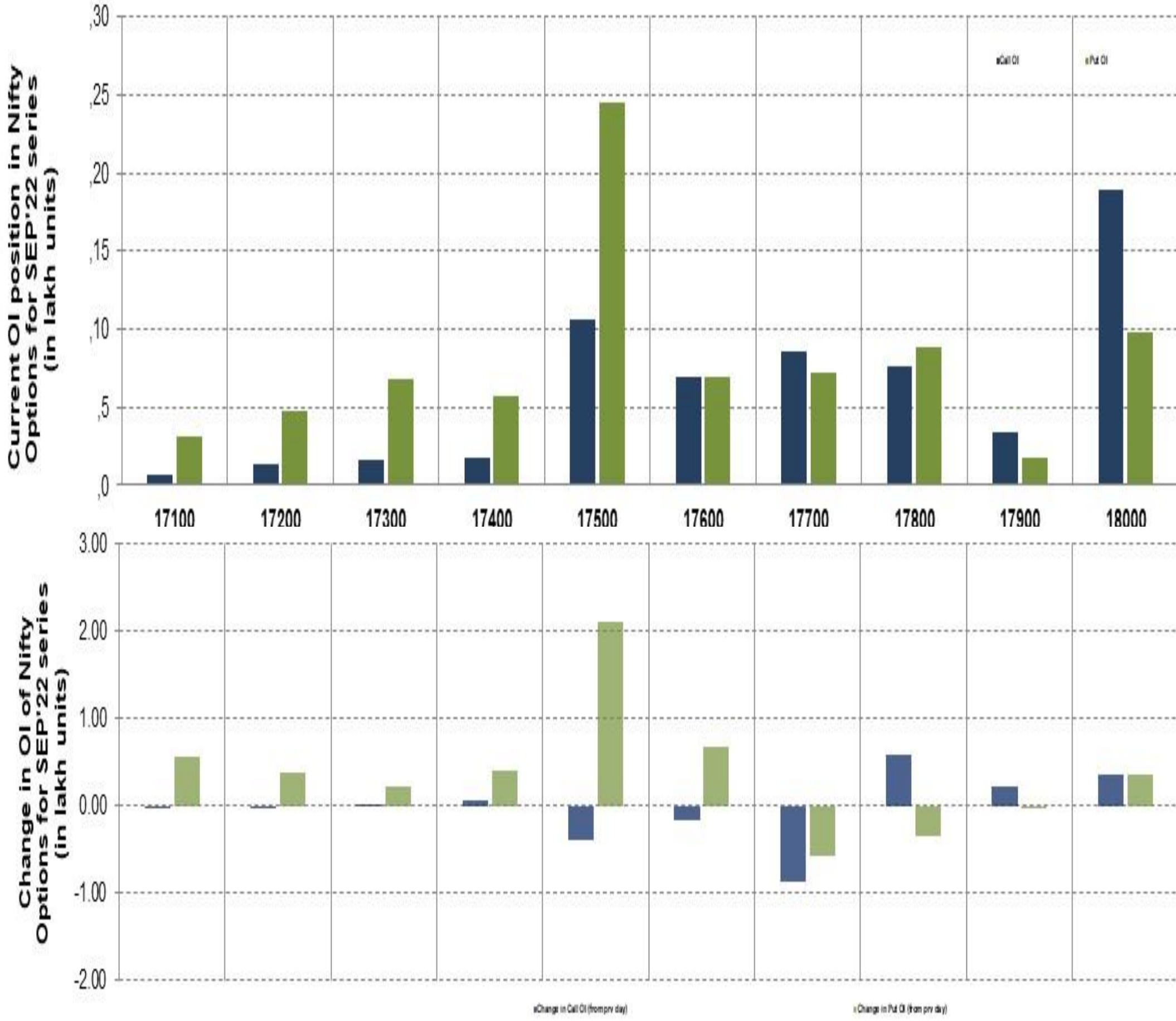




# TECHNICAL VIEWS



## NIFTY OPTIONS



- **Most Active Nifty Call** with an addition of 0.05 million in Open Interests is **Strike Price of 17800**
- **Most Active Nifty Put** with an addition of 0.21 millions in Open Interests is **Strike Price of 17500**
- **Maximum Open Interest an outstanding** was 1.89 millions for Calls at **Strike Price of 18000**
- **Maximum Open Interest an outstanding** was 2.44 millions for puts at **Strike Price of 17500**

# Disclaimer



The Information provided by SMS or in newsletter or in any document has been prepared by Shah Investor's Home Ltd (SIHL). The Information provided by SMS or in newsletter does not constitute an offer or solicitation for the purchase or sale of any financial instrument or as an official confirmation of any transaction. The information contained herein is from publicly available data or other sources believed to be reliable, but we do not represent that it is accurate or complete and it should not be relied on as such. SIHL or any of its affiliates/ group companies shall not be in any way responsible for any loss or damage that may arise to any person from any error in the information contained in this report or SMS. This Information provided by SMS, reports or in newsletter is provided for assistance only and is not intended to be and must not alone be taken as the basis for an investment decision. The user assumes the entire risk of any use made of this information. Each recipient of this Information provided by SMS, report or in newsletter should make such investigation as it deems necessary to arrive at an independent evaluation of an investment in the securities of companies referred to in this information provided by SMS, report or in newsletter (including the merits and risks involved), and should consult his own advisors to determine the merits and risks of such investment. The investment discussed or views expressed may not be suitable for all investors. This information is strictly confidential and is being furnished to you solely for your information.

The information should not be reproduced or redistributed or passed on directly or indirectly in any form to any other person or published, copied, in whole or in part, for any purpose. The information provided by report or SMS is not directed or intended for distribution to, or use by, any person or entity who is a citizen or resident of or located in any locality, state, country or other jurisdiction, where such distribution, publication, availability or use would be contrary to law, regulation or which would subject SIHL and affiliates/ group companies to any registration or licensing requirements within such jurisdiction. The distribution of this Information provided by SMS or in newsletter in certain jurisdictions may be restricted by law, and persons in whose possession this Information provided by SMS or in newsletter comes, should inform themselves about and observe, any such restrictions. The information given or Information provided by SMS, report or in newsletter is as of the date of the issue date of report or the date on which SMS provided and there can be no assurance that future results or events will be consistent with this information. This information is subject to change without any prior notice. SIHL reserves the right to make modifications and alterations to this statement as may be required from time to time. However, SIHL is under no obligation to update or keep the information current.

Nevertheless, SIHL is committed to providing independent and transparent recommendation to its client and would be happy to provide any information in response to specific client queries. Neither SIHL nor any of its affiliates, group companies, directors, employees, agents or representatives shall be liable for any damages whether direct, indirect, special or consequential including lost revenue or lost profits that may arise from or in connection with the use of the information. Past performance is not necessarily a guide to future performance. The disclosures of interest statements incorporated in the Information provided by SMS, report or in newsletter are provided solely to enhance the transparency and should not be treated as endorsement of the views expressed in the report. The analyst for this report certifies that all of the views expressed in this report accurately reflect his or her personal views about the subject company or companies and its or their securities, and no part of his or her compensation was, is or will be, directly or indirectly related to specific recommendations or views expressed in this report.