



MORNING MANTRA



Daily Derivatives & Market Report

SEP 28, 2022



Indian equity benchmarks ended lethargic day of trade near intra-day low points amid gloominess across global markets as worries persisted about aggressive policy tightening by the Fed. Local equities markets made gap-down opening, as traders were cautious after fourth round of the Quarterly Employment Survey (QES) released by the Labour Ministry showed that employment generation in nine non-farm sectors slowed down in the March quarter of FY22, possibly under the impact of Omicron variant of Covid-19, with additional job creation dipping to 350,000 during the quarter, from 390,000 in the preceding December quarter of the financial year. However, markets pared some of their losses to trade near neutral lines, as traders took some support with a drop in oil and commodity prices, investment in the Indian capital markets through participatory notes rose to Rs 84,810 crore at the end of August, after three consecutive monthly declines.

Traders took note of private report that interest rate hikes in the United States and the resultant pressure on the rupee is likely to give the Reserve Bank of India (RBI) reason to deliver a 50-basis-point rate hike on Friday even as it tries to protect a recovery in growth. The RBI's monetary policy committee (MPC) has already hiked the key policy rate by 140 bps since May to 5.4%. Since the last policy meet, retail inflation has risen above 7% again and the rupee has weakened 9.5% on-year, with pressure on the currency accelerating after the U.S. Federal Reserve's meeting last week. But, markets witnessed sharp selloff in afternoon session and ended near lowest points of day as sentiments on the street weakened after rupee depreciated 40 paise to an all-time low of 81.93 against the US dollar as the strengthening of the American currency.

On the global front, European markets were trading lower as investors fretted after a series of unusual leaks on two natural gas pipelines running from Russia under the Baltic Sea to Germany triggered concerns about sabotage and Britain's radical tax cuts to spur growth. Back home, Foreign Institutional Investors (FIIs) were stood sellers (net) in the capital market on Tuesday as they offloaded shares worth Rs 2,823.96 crore, exchange data showed. Besides, Investors are eyeing the Reserve Bank's rate-setting panel to start its 3-day deliberations today amid expectations of yet another rate hike of 50 basis points to check high inflation, in line with similar actions taken by other major central banks, including the US Fed.

MARKET SELFIE



MARKET SUMMARY

Domestic Indices	Close	Points	% Change
SENSEX	56598.28	-509.24	-0.89
NIFTY	16858.60	-148.80	-0.87
MIDCAP	24437.61	-116.39	-0.47
SMLCAP	27870.64	-120.23	-0.43
BSEFMC	15998.56	-105.50	-0.66
AUTO	28793.48	23.41	0.08
POWER	4720.27	-49.74	-1.04
REALTY	3299.45	-25.14	-0.76
BSE IT	27429.15	76.01	0.28
BANKEX	43229.24	-667.33	-1.52
OIL GAS	18545.51	-151.04	-0.81
METAL	17285.17	-410.68	-2.32
INDIA VIX	22.10	0.53	2.46

ADVANCE - DECLINE

Index	Advance	Decline	Unchanged
NSE	942	1328	41
BSE	1335	2092	105

MARKET TURNOVER (₹ in Crs)

Segment	Current	Previous	Net %
BSE CASH	4354	3844	13
NSE CASH	49724	58093	(14)
NSE F&O	274267	279054	(2)

KEY INDICES RATIOS

INDEX	P/E	P/B	Dividend Yield
NIFTY	20.13	3.91	1.36
SENSEX	21.83	3.23	1.27

KEY NUMBERS TRACKER



FII – DII ACTIVITY IN CASH SEGMENT (₹ in Crs)

FII-DII*	Buy	Sell	Net
DII	7678	5134	2544
FII	7730	10502	(2772)

Note: FPI & DII Figures are provisional

FII ACTIVITY IN DERIVATIVES SEGMENT (₹ in Crs)

FII	Buy	Sell	Net
Index Futures	10571.63	10467.80	104
Index Options	1136778.99	1127526.28	9253
Stock Futures	40103.69	40504.45	(401)
Stock Options	9766.75	9963.44	(197)

PUT-CALL RATIO

Index	Current	Previous
NIFTY	0.75	0.70
BANK NIFTY	0.55	0.54

DOLLAR INDEX

Dollar Index	Current	Previous	% Change
DXY	114.35	114.10	0.22

10-YEARS G-SEC YIELD

Country	Current	Previous	% Change
INDIA	7.336	7.292	0.60
USA	3.901	3.963	-1.58

KEY COMMODITIES TRACKER (in \$)

Commodity	Current	Change Points	% Change
Gold	1628.55	-0.29	-0.02
Silver	18.24	-0.14	-0.84
Crude-Oil	79.10	0.60	0.76
Brent-Crude	86.90	0.63	0.73

CURRENCY FUTURES & INDEX TRENDS TRACKER



CURRENCY FUTURES

Expiry	Close	Change Points	% Change
27 OCT -22 USD-INR	82.23	0.39	0.47
27 OCT -22 EUR-INR	78.81	-0.28	-0.35
27 OCT -22 GBP-INR	86.89	-1.61	-1.82
27 OCT -22 JPY- INR	57.02	0.13	0.24

INDICES – SUPPORT-RESISTANCE-PIVOT LEVELS

Index	Close	S2	S1	Pivot	R1	R2
NIFTY	16859	16688	16773	16906	16991	17123
SENSEX	56598	56038	56318	56766	57046	57493
NIFTY FUTURES	16838	16702	16770	16902	16970	17101
BANK NIFTY	37760	37176	37468	37918	38210	38661
CNX IT	27068	26559	26813	27028	27283	27498
CNX MIDCAP	30066	29647	29856	30094	30304	30542
CNX SMALLCAP	9236	9118	9177	9251	9310	9384
INDIA VIX	22.10	21.11	21.61	21.98	22.48	22.85

INDEX TREND ANALYSIS

Index	Daily	Weekly	Monthly
NIFTY	Sell	Neutral	Buy
SENSEX	Sell	Neutral	Buy
NIFTY FUTURES	Sell	Neutral	Buy
BANK NIFTY	Neutral	Neutral	Buy
CNX IT	Neutral	Sell	Neutral
CNX MIDCAP	Sell	Buy	Buy
CNX SMALLCAP	Sell	Neutral	Buy
INDIA VIX	Buy	Neutral	Sell

SECURITIES BAN IN F&O TRADES FOR 29-09-2022

IDEA

TECHNICAL VIEWS



NIFTY

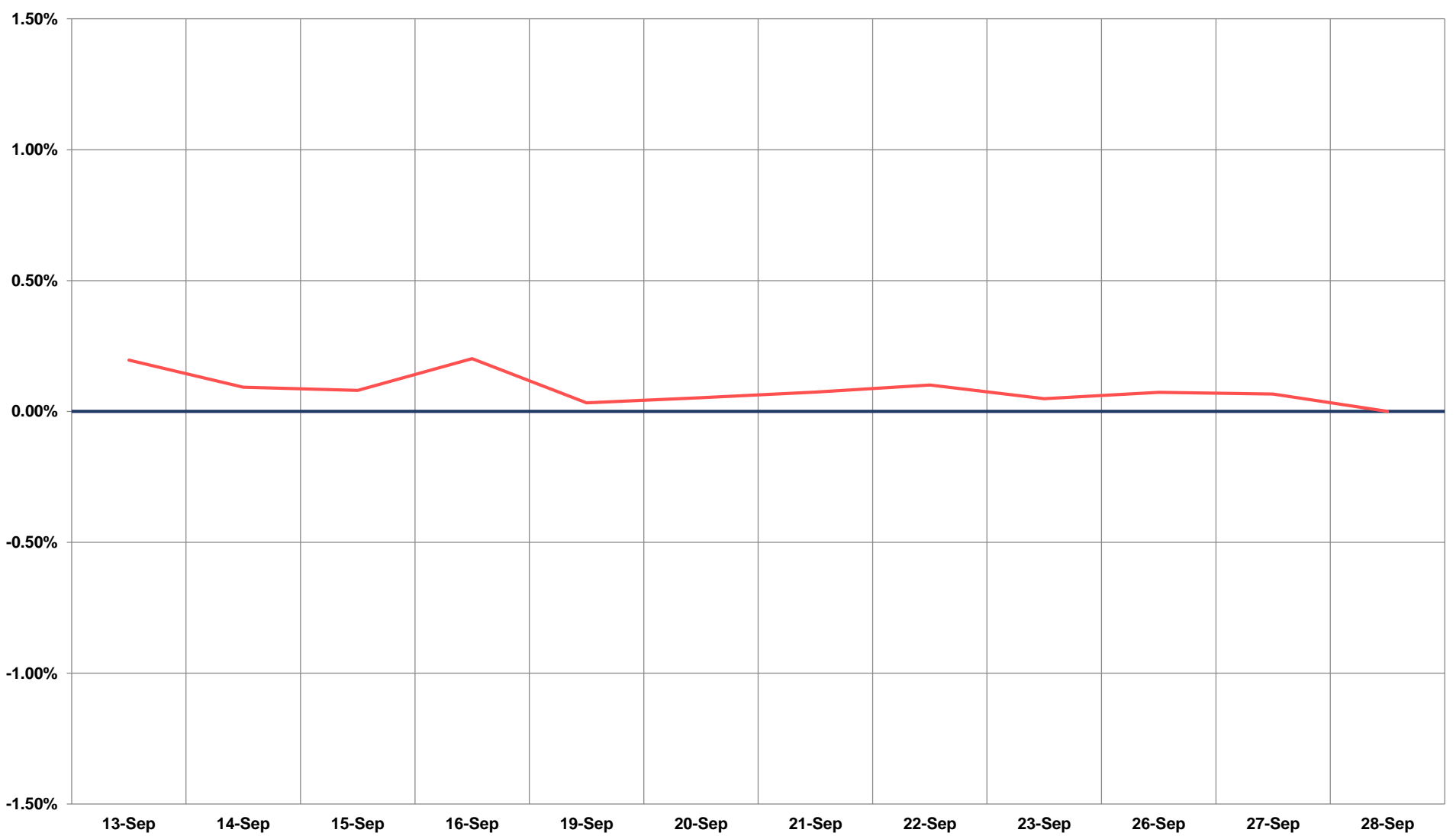
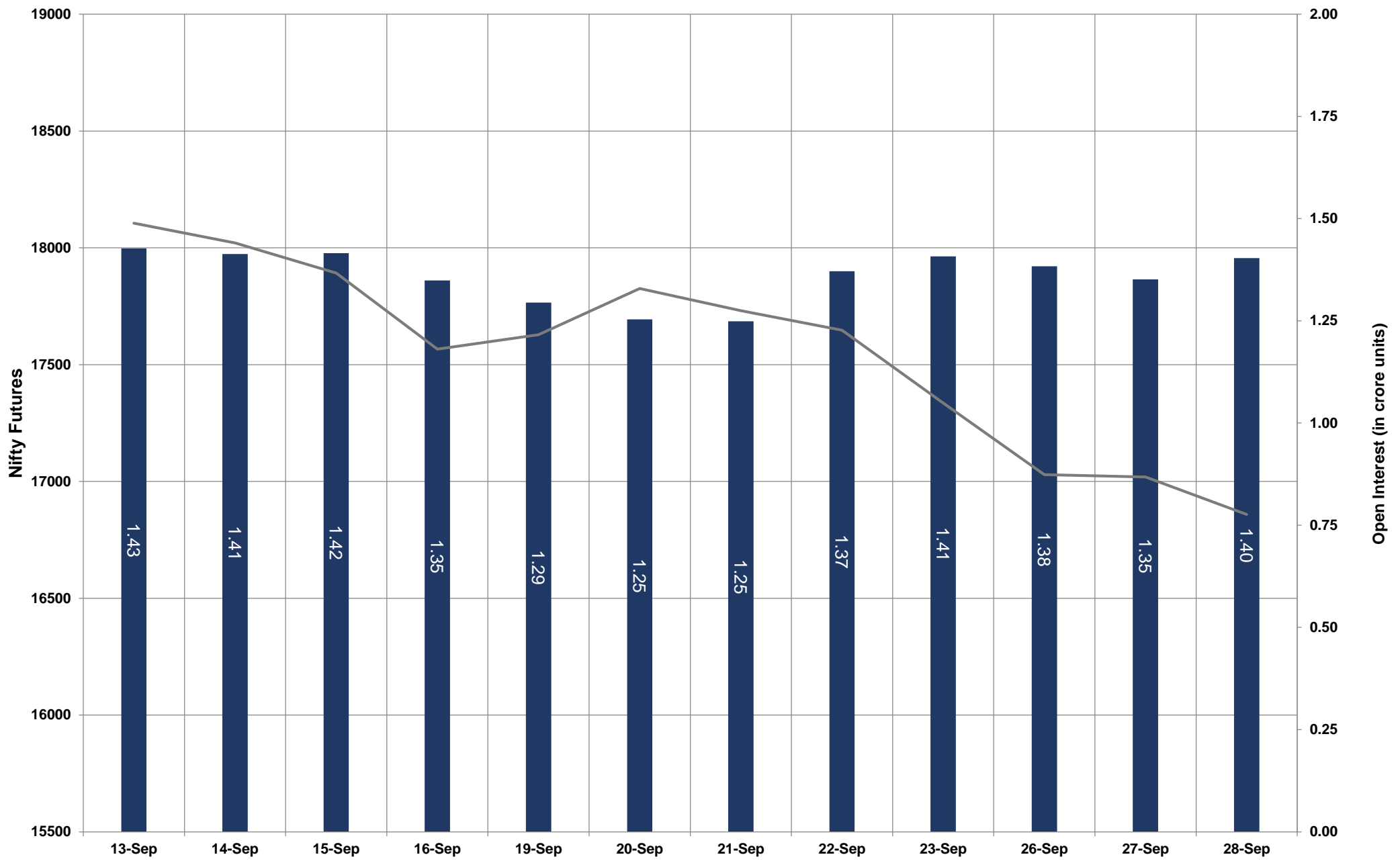


- Nifty Cash = **16858.60 (-0.87%)**
- Resistance levels = **17030** and **17150**
- Support levels = **16775** and **16660**

TECHNICAL VIEWS



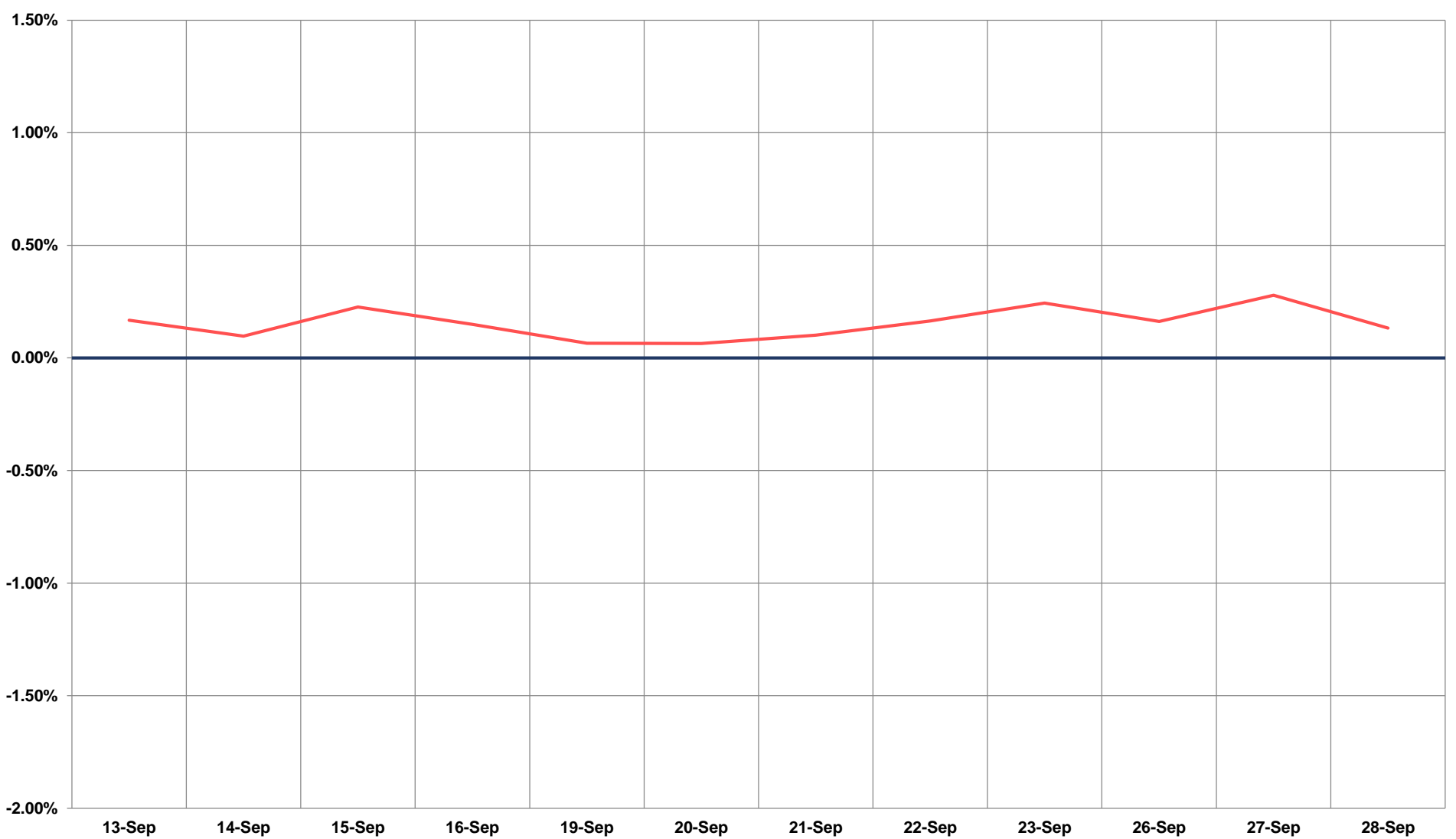
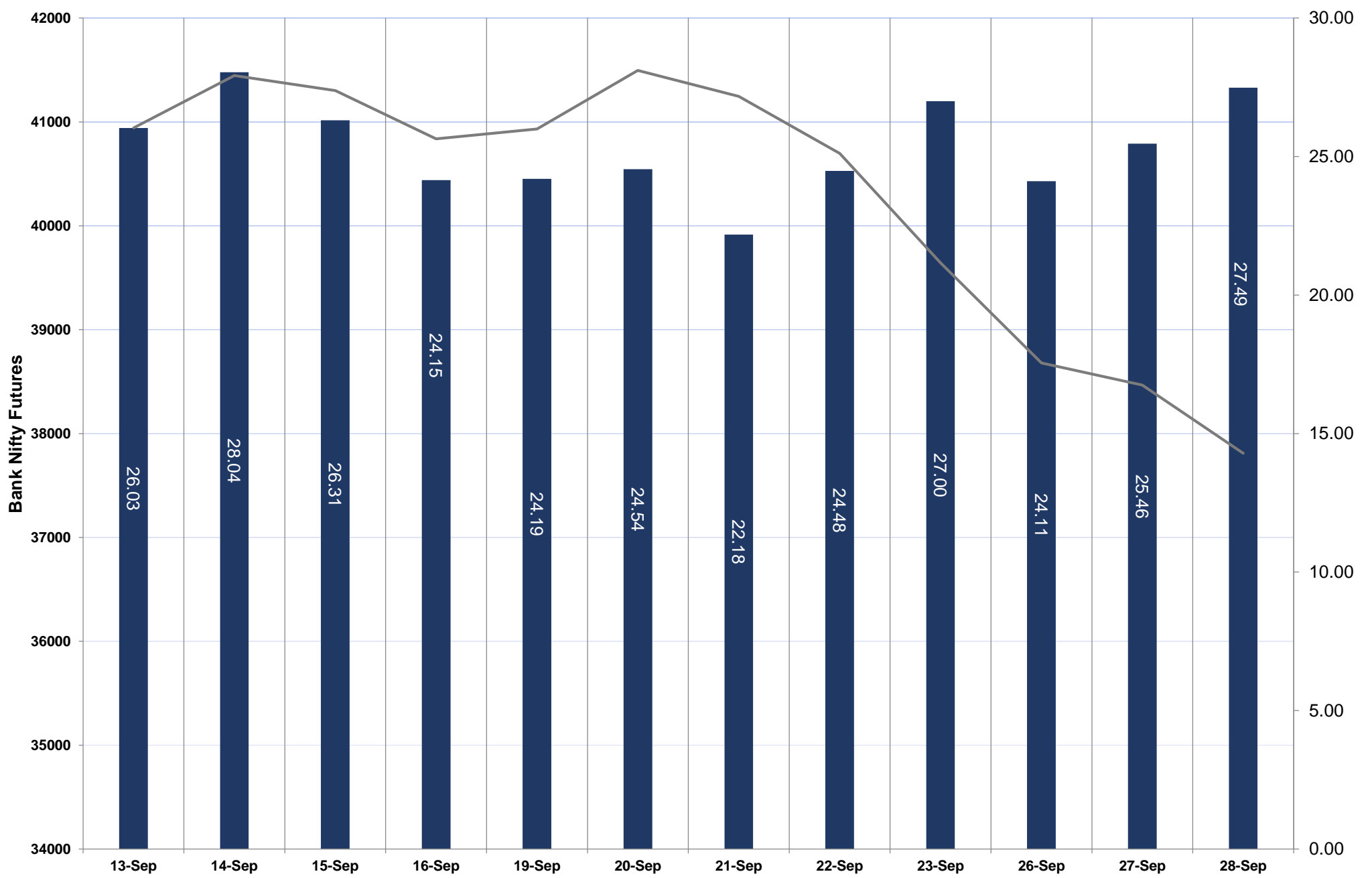
NIFTY FUTURES



TECHNICAL VIEWS



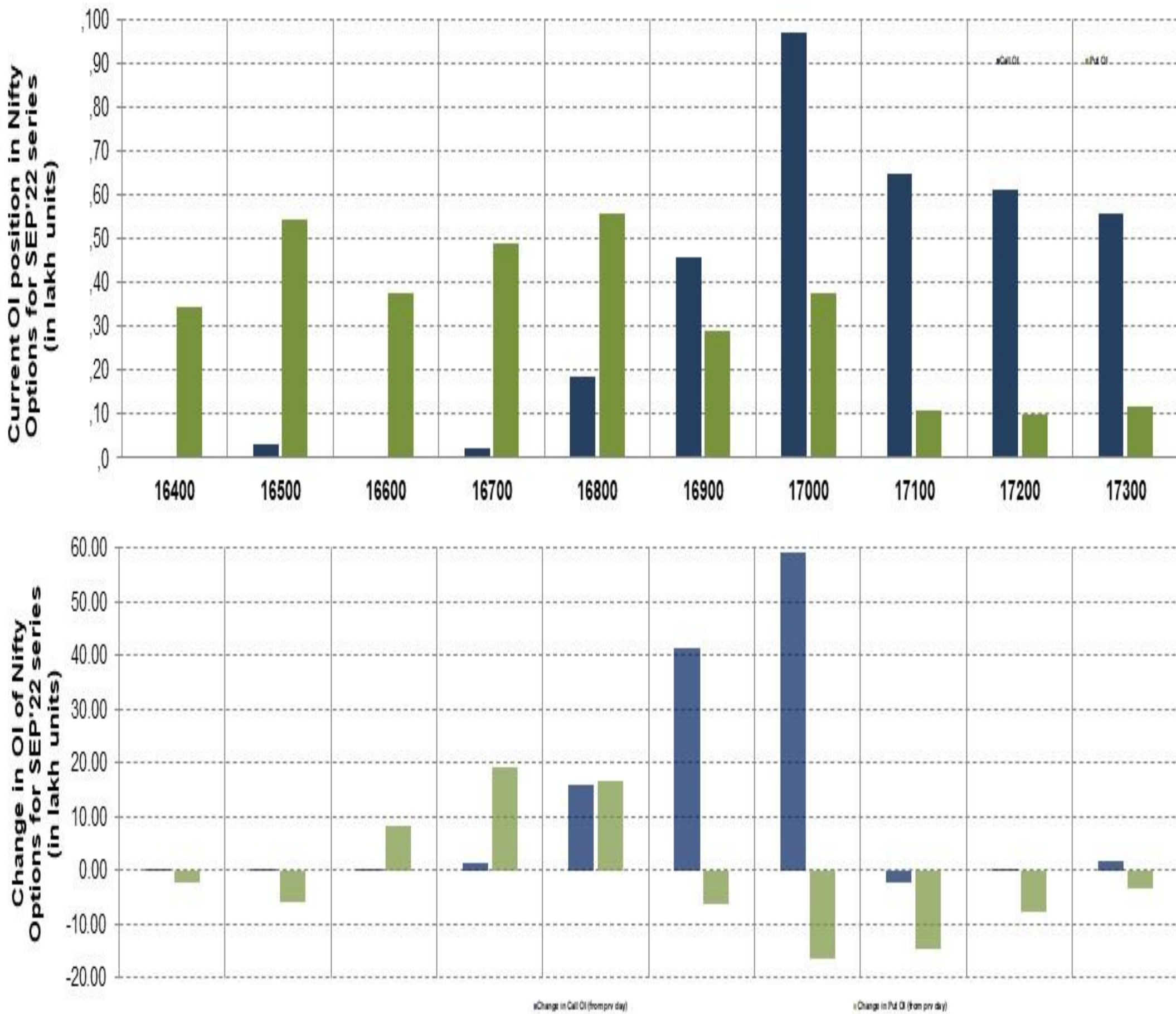
BANK NIFTY FUTURES



TECHNICAL VIEWS



NIFTY OPTIONS



- **Most Active Nifty Call** with an addition of **5.90 million** in Open Interests is **Strike Price of 17000**
- **Most Active Nifty Put** with an addition of **1.92 millions** in Open Interests is **Strike Price of 16700**
- **Maximum Open Interest** an outstanding was **9.71 millions** for Calls at **Strike Price of 17000**
- **Maximum Open Interest** an outstanding was **5.56 millions** for puts at **Strike Price of 16800**

Disclaimer



The Information provided by SMS or in newsletter or in any document has been prepared by Shah Investor's Home Ltd (SIHL). The Information provided by SMS or in newsletter does not constitute an offer or solicitation for the purchase or sale of any financial instrument or as an official confirmation of any transaction. The information contained herein is from publicly available data or other sources believed to be reliable, but we do not represent that it is accurate or complete and it should not be relied on as such. SIHL or any of its affiliates/ group companies shall not be in any way responsible for any loss or damage that may arise to any person from any error in the information contained in this report or SMS. This Information provided by SMS, reports or in newsletter is provided for assistance only and is not intended to be and must not alone be taken as the basis for an investment decision. The user assumes the entire risk of any use made of this information. Each recipient of this Information provided by SMS, report or in newsletter should make such investigation as it deems necessary to arrive at an independent evaluation of an investment in the securities of companies referred to in this information provided by SMS, report or in newsletter (including the merits and risks involved), and should consult his own advisors to determine the merits and risks of such investment. The investment discussed or views expressed may not be suitable for all investors. This information is strictly confidential and is being furnished to you solely for your information.

The information should not be reproduced or redistributed or passed on directly or indirectly in any form to any other person or published, copied, in whole or in part, for any purpose. The information provided by report or SMS is not directed or intended for distribution to, or use by, any person or entity who is a citizen or resident of or located in any locality, state, country or other jurisdiction, where such distribution, publication, availability or use would be contrary to law, regulation or which would subject SIHL and affiliates/ group companies to any registration or licensing requirements within such jurisdiction. The distribution of this Information provided by SMS or in newsletter in certain jurisdictions may be restricted by law, and persons in whose possession this Information provided by SMS or in newsletter comes, should inform themselves about and observe, any such restrictions. The information given or Information provided by SMS, report or in newsletter is as of the date of the issue date of report or the date on which SMS provided and there can be no assurance that future results or events will be consistent with this information. This information is subject to change without any prior notice. SIHL reserves the right to make modifications and alterations to this statement as may be required from time to time. However, SIHL is under no obligation to update or keep the information current.

Nevertheless, SIHL is committed to providing independent and transparent recommendation to its client and would be happy to provide any information in response to specific client queries. Neither SIHL nor any of its affiliates, group companies, directors, employees, agents or representatives shall be liable for any damages whether direct, indirect, special or consequential including lost revenue or lost profits that may arise from or in connection with the use of the information. Past performance is not necessarily a guide to future performance. The disclosures of interest statements incorporated in the Information provided by SMS, report or in newsletter are provided solely to enhance the transparency and should not be treated as endorsement of the views expressed in the report. The analyst for this report certifies that all of the views expressed in this report accurately reflect his or her personal views about the subject company or companies and its or their securities, and no part of his or her compensation was, is or will be, directly or indirectly related to specific recommendations or views expressed in this report.