



MORNING MANTRA



Daily Derivatives & Market Report

OCT 04, 2022



Indian equity benchmarks showed an enthusiastic performance on Tuesday with Nifty and Sensex ending higher by above two percent, amid strong sentiments overseas. Markets made a gap-up opening, as traders took encouragement with Crisil Ratings' statement that India Inc's credit quality showed further improvement in April-September period with the ratio of upgrades to downgrades inching higher. Crisil Ratings, which rates 6,800 companies, added that the credit ratio's improvement to 5.52 times in H1FY23 as compared to 5.04 times in H2FY22 was driven by leaner balance sheets led by healthy cash flows and muted investments. Key indices continued their gaining momentum even after United Nations Conference on Trade and Development (UNCTAD) in its latest report has said that India's economic growth is expected to decline to 5.7 per cent this year from 8.2 per cent in 2021, citing higher financing cost and weaker public expenditures. It further said India's GDP will further decelerate to 4.7 per cent growth in 2023.

Markets continued their rally mood till the end and closed the session with splendid gains ahead of the corporate earnings season. Domestic sentiments remained upbeat with Icria Ratings stating that credit quality of corporates has strengthened further in the first half of the current fiscal with rating upgrades being more than three times that of downgrades, carrying on with the momentum since early FY22. Some additional support came as foreign investors turned net buyers after a gap of eight days of being net sellers. The foreign portfolio investors bought equities worth 590.58, according to National Stock Exchange data.

On the global front, European markets were trading higher on Tuesday to extend gains from the previous session as weak U.S. manufacturing and construction data released overnight raised hopes for slower Federal Reserve tightening. Asian markets ended in green amid hopes for a dovish pivot from the U.S. Federal Reserve. The Bank of England is the first to pivot back to quantitative easing, claiming to restore market functioning and reduce risks of contagion. Back home, sector wise, telecom industry stocks remained in limelight, as government has approved a sum of Rs 26,000 crore to set up 25,000 telecommunication towers in the country over the next 500 days, as connectivity is vital for Digital India. The move comes within days of India launching 5G services, which the government says would connect the remotest parts of the country to the internet and fast-track the digital revolution.

MARKET SELFIE



MARKET SUMMARY

Domestic Indices	Close	Points	% Change
SENSEX	58065.47	1276.66	2.25
NIFTY	17274.30	386.95	2.29
MIDCAP	25141.18	595.18	2.42
SMLCAP	28723.02	422.80	1.49
BSEFMC	16138.09	289.01	1.82
AUTO	29160.36	599.55	2.10
POWER	4702.94	107.72	2.34
REALTY	3410.01	74.86	2.24
BSE IT	27953.59	728.85	2.68
BANKEX	44619.84	1188.54	2.74
OIL GAS	18707.10	321.99	1.75
METAL	18460.46	612.06	3.43
INDIA VIX	19.57	-1.80	-8.42

ADVANCE - DECLINE

Index	Advance	Decline	Unchanged
NSE	1958	344	42
BSE	2580	855	129

MARKET TURNOVER (₹ in Crs)

Segment	Current	Previous	Net %
BSE CASH	2825	3777	(25)
NSE CASH	49202	64200	(23)
NSE F&O	147555	155186	(5)

KEY INDICES RATIOS

INDEX	P/E	P/B	Dividend Yield
NIFTY	20.86	4.06	1.31
SENSEX	22.47	3.32	1.24

KEY NUMBERS TRACKER



FII – DII ACTIVITY IN CASH SEGMENT (₹ in Crs)

FII-DII*	Buy	Sell	Net
DII	6092	5147	946
FII	6647	5302	1345

Note: FPI & DII Figures are provisional

FII ACTIVITY IN DERIVATIVES SEGMENT (₹ in Crs)

FII	Buy	Sell	Net
Index Futures	6580.94	3490.20	3091
Index Options	731080.08	724833.48	6247
Stock Futures	13076.43	10895.65	2181
Stock Options	6897.15	6850.79	46

PUT-CALL RATIO

Index	Current	Previous
NIFTY	1.24	0.84
BANK NIFTY	1.04	0.76

DOLLAR INDEX

Dollar Index	Current	Previous	% Change
DXY	111.10	111.75	-0.58

10-YEARS G-SEC YIELD

Country	Current	Previous	% Change
INDIA	7.362	7.468	-1.42
USA	3.587	3.651	-1.74

KEY COMMODITIES TRACKER (in \$)

Commodity	Current	Change Points	% Change
Gold	1711.19	10.19	0.60
Silver	20.88	0.11	0.54
Crude-Oil	84.46	0.83	0.99
Brent-Crude	89.84	0.98	1.09

CURRENCY FUTURES & INDEX TRENDS TRACKER



CURRENCY FUTURES

Expiry	Close	Change Points	% Change
27 OCT -22 USD-INR	81.83	-0.18	-0.21
27 OCT -22 EUR-INR	80.97	0.69	0.86
27 OCT -22 GBP-INR	92.73	0.89	0.97
27 OCT -22 JPY- INR	56.62	-0.09	-0.16

INDICES – SUPPORT-RESISTANCE-PIVOT LEVELS

Index	Close	S2	S1	Pivot	R1	R2
NIFTY	17274	17056	17165	17226	17335	17396
SENSEX	58065	57297	57681	57891	58275	58484
NIFTY FUTURES	17306	17063	17184	17247	17368	17431
BANK NIFTY	39110	38381	38745	38961	39326	39542
CNX IT	27497	26954	27225	27378	27650	27802
CNX MIDCAP	31091	30510	30800	30960	31250	31410
CNX SMALLCAP	9544	9457	9501	9530	9574	9603
INDIA VIX	19.57	18.21	18.89	20.13	20.81	22.05

INDEX TREND ANALYSIS

Index	Daily	Weekly	Monthly
NIFTY	Neutral	Neutral	Neutral
SENSEX	Neutral	Neutral	Neutral
NIFTY FUTURES	Neutral	Neutral	Neutral
BANK NIFTY	Neutral	Neutral	Buy
CNX IT	Neutral	Sell	Neutral
CNX MIDCAP	Neutral	Neutral	Buy
CNX SMALLCAP	Neutral	Sell	Neutral
INDIA VIX	Neutral	Neutral	Neutral

SECURITIES BAN IN F&O TRADES FOR 06-09-2022

NIL

TECHNICAL VIEWS



NIFTY

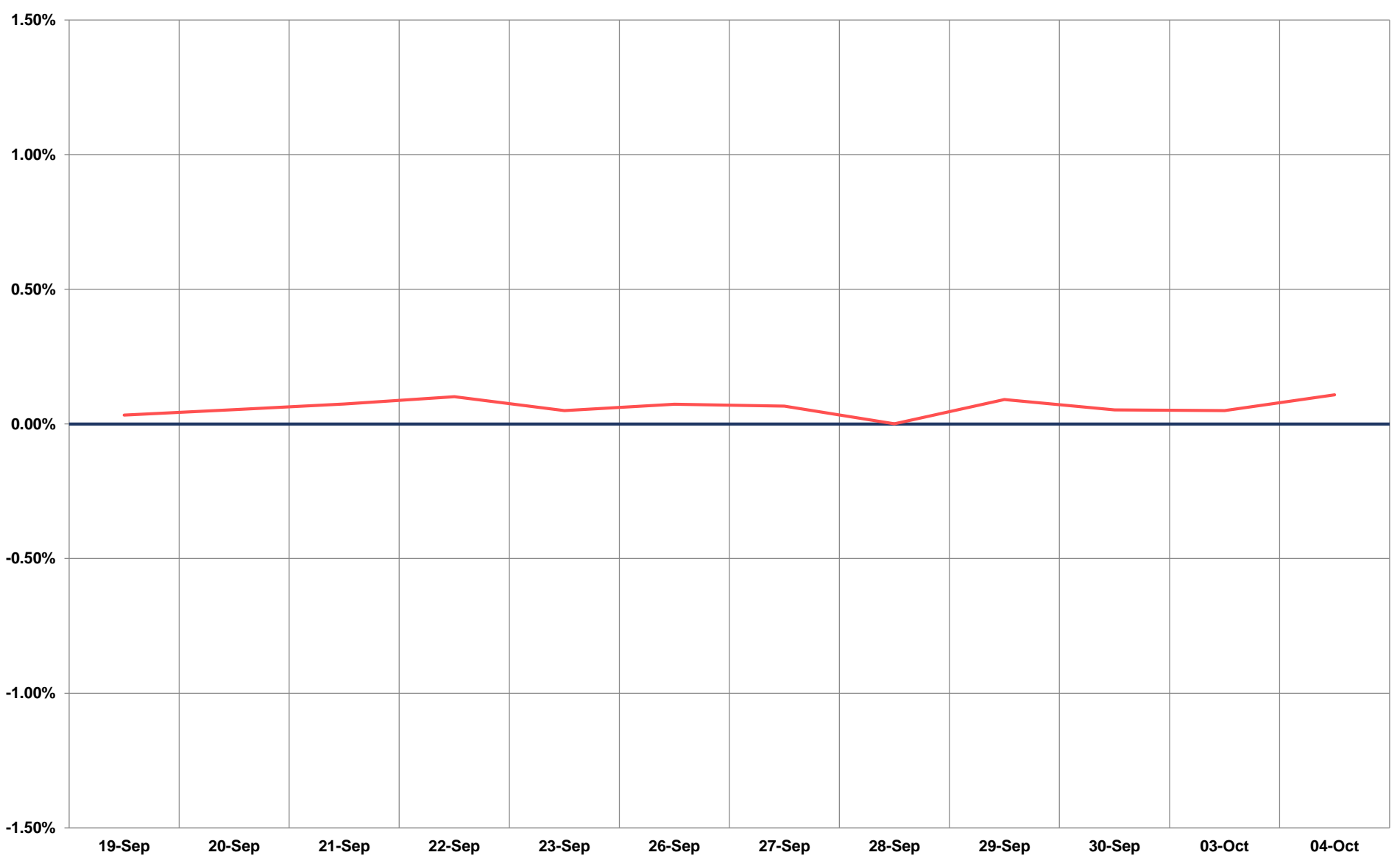
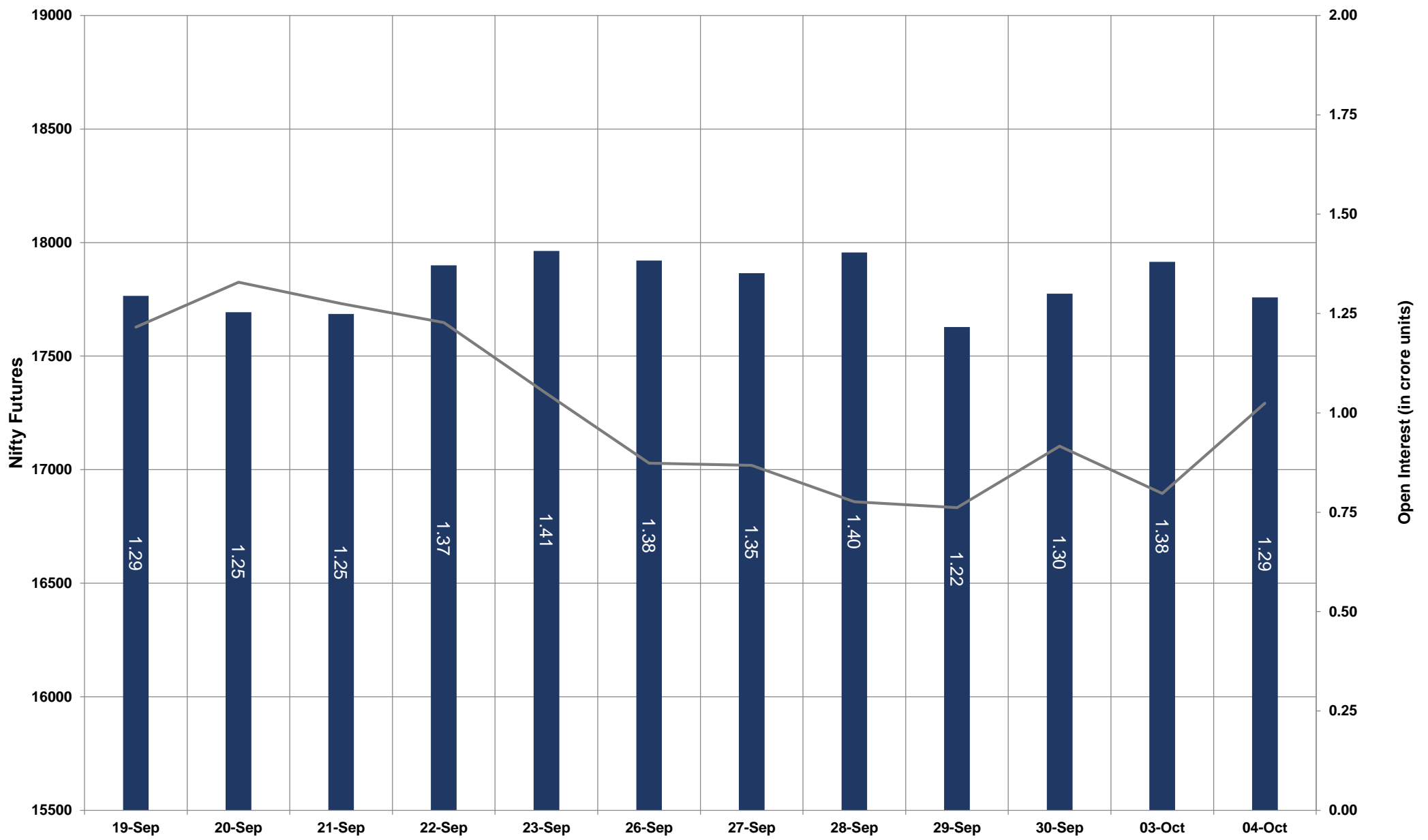


- Nifty Cash = **17274.30 (2.29%)**
- Resistance levels = **17400** and **17530**
- Support levels = **17000** and **17120**

TECHNICAL VIEWS



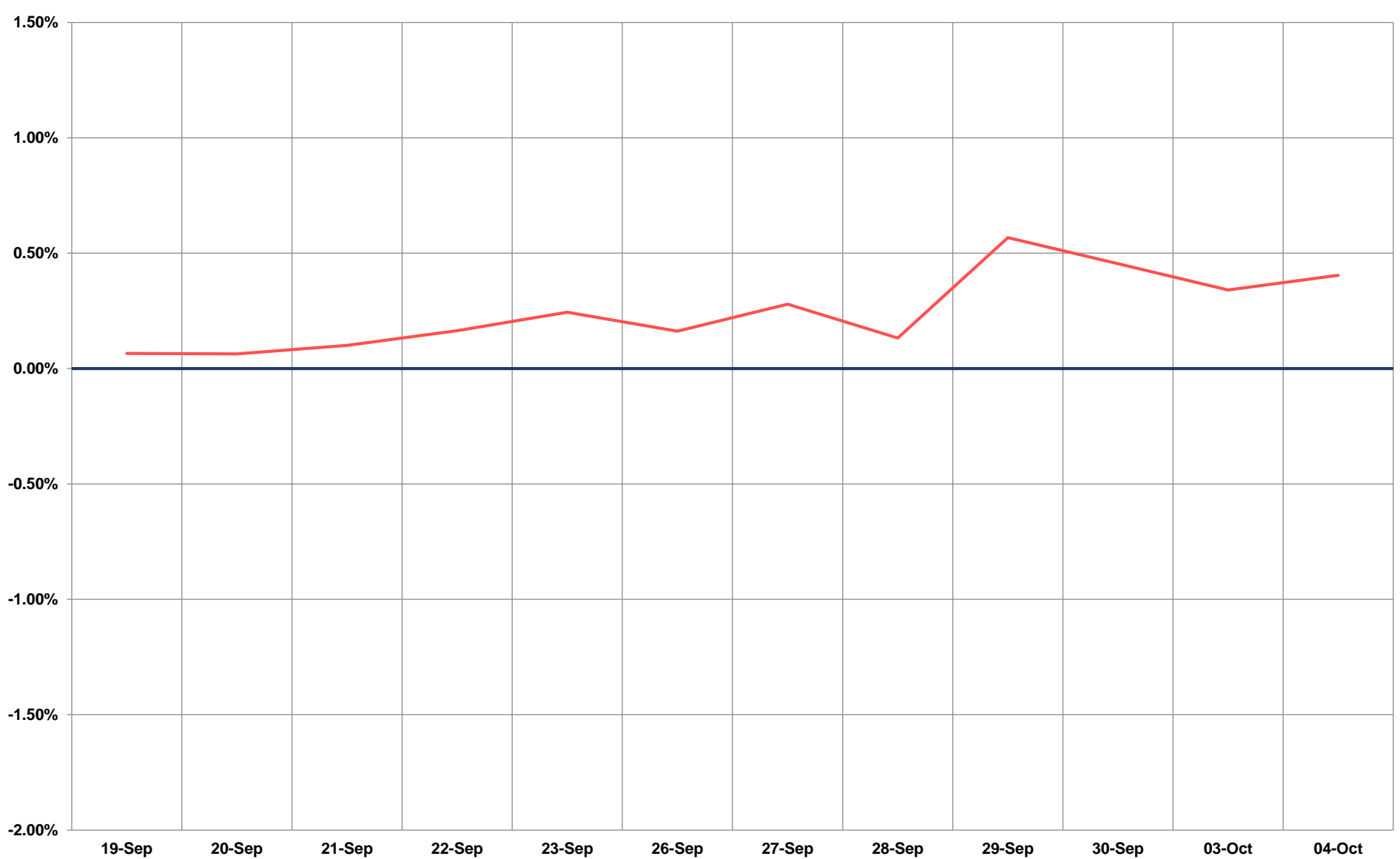
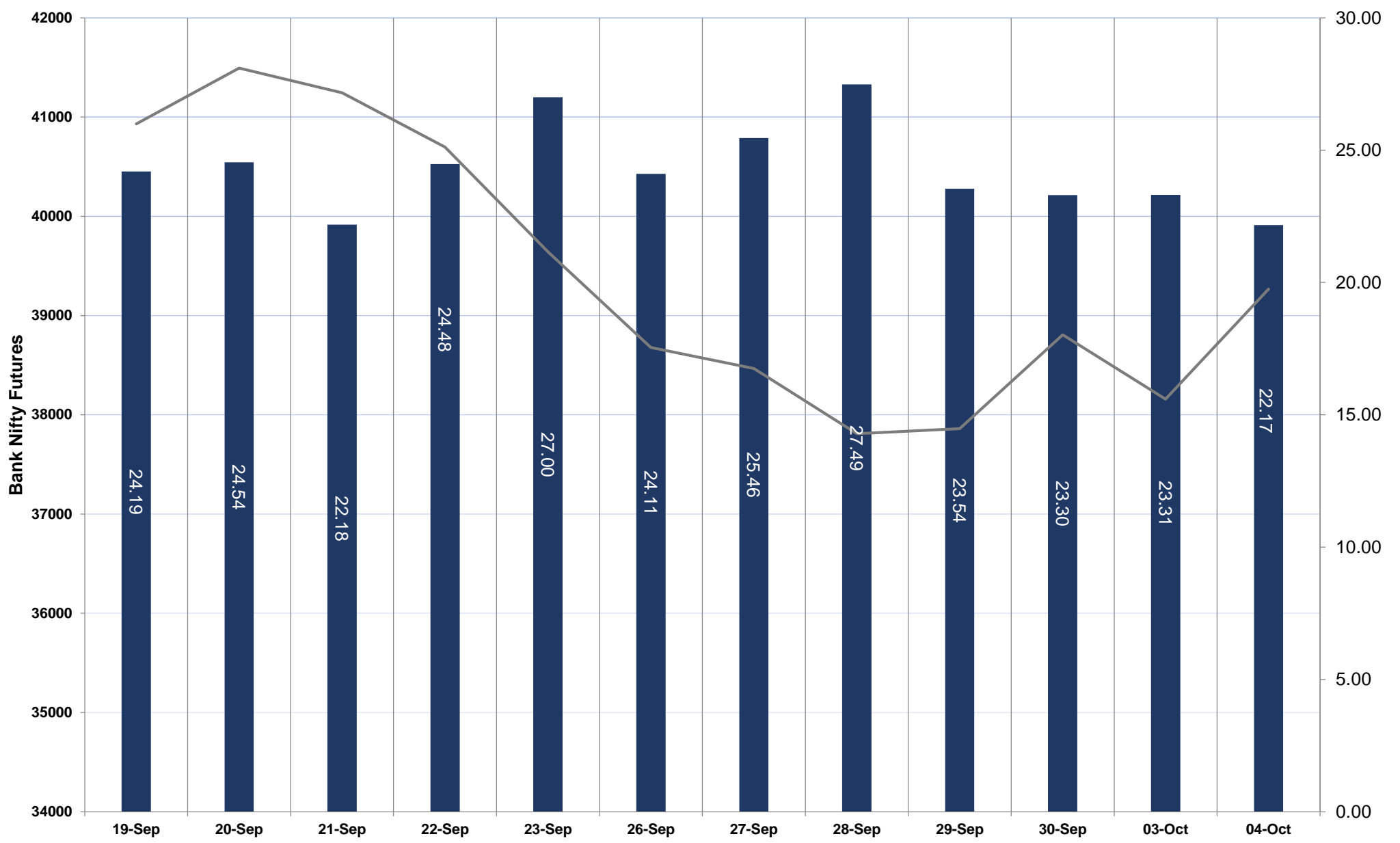
NIFTY FUTURES



TECHNICAL VIEWS



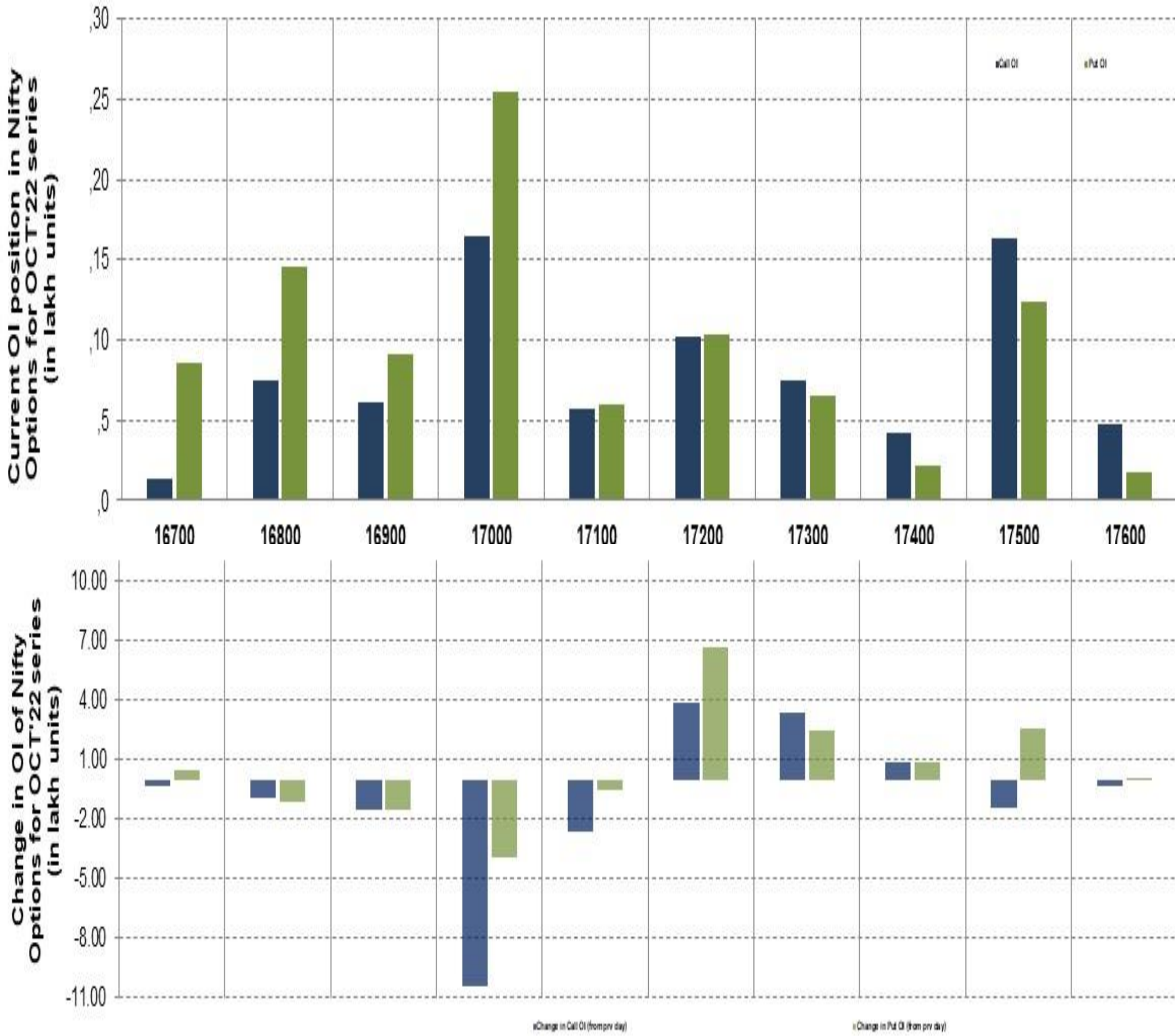
BANK NIFTY FUTURES



TECHNICAL VIEWS



NIFTY OPTIONS



- **Most Active Nifty Call** with an addition of 0.33 million in Open Interests is **Strike Price of 17300**
- **Most Active Nifty Put** with an addition of 0.66 millions in Open Interests is **Strike Price of 17200**
- **Maximum Open Interest an outstanding** was 1.64 millions for Calls at **Strike Price of 17000**
- **Maximum Open Interest an outstanding** was 2.54 millions for puts at **Strike Price of 17000**

Disclaimer



The Information provided by SMS or in newsletter or in any document has been prepared by Shah Investor's Home Ltd (SIHL). The Information provided by SMS or in newsletter does not constitute an offer or solicitation for the purchase or sale of any financial instrument or as an official confirmation of any transaction. The information contained herein is from publicly available data or other sources believed to be reliable, but we do not represent that it is accurate or complete and it should not be relied on as such. SIHL or any of its affiliates/ group companies shall not be in any way responsible for any loss or damage that may arise to any person from any error in the information contained in this report or SMS. This Information provided by SMS, reports or in newsletter is provided for assistance only and is not intended to be and must not alone be taken as the basis for an investment decision. The user assumes the entire risk of any use made of this information. Each recipient of this Information provided by SMS, report or in newsletter should make such investigation as it deems necessary to arrive at an independent evaluation of an investment in the securities of companies referred to in this information provided by SMS, report or in newsletter (including the merits and risks involved), and should consult his own advisors to determine the merits and risks of such investment. The investment discussed or views expressed may not be suitable for all investors. This information is strictly confidential and is being furnished to you solely for your information.

The information should not be reproduced or redistributed or passed on directly or indirectly in any form to any other person or published, copied, in whole or in part, for any purpose. The information provided by report or SMS is not directed or intended for distribution to, or use by, any person or entity who is a citizen or resident of or located in any locality, state, country or other jurisdiction, where such distribution, publication, availability or use would be contrary to law, regulation or which would subject SIHL and affiliates/ group companies to any registration or licensing requirements within such jurisdiction. The distribution of this Information provided by SMS or in newsletter in certain jurisdictions may be restricted by law, and persons in whose possession this Information provided by SMS or in newsletter comes, should inform themselves about and observe, any such restrictions. The information given or Information provided by SMS, report or in newsletter is as of the date of the issue date of report or the date on which SMS provided and there can be no assurance that future results or events will be consistent with this information. This information is subject to change without any prior notice. SIHL reserves the right to make modifications and alterations to this statement as may be required from time to time. However, SIHL is under no obligation to update or keep the information current.

Nevertheless, SIHL is committed to providing independent and transparent recommendation to its client and would be happy to provide any information in response to specific client queries. Neither SIHL nor any of its affiliates, group companies, directors, employees, agents or representatives shall be liable for any damages whether direct, indirect, special or consequential including lost revenue or lost profits that may arise from or in connection with the use of the information. Past performance is not necessarily a guide to future performance. The disclosures of interest statements incorporated in the Information provided by SMS, report or in newsletter are provided solely to enhance the transparency and should not be treated as endorsement of the views expressed in the report. The analyst for this report certifies that all of the views expressed in this report accurately reflect his or her personal views about the subject company or companies and its or their securities, and no part of his or her compensation was, is or will be, directly or indirectly related to specific recommendations or views expressed in this report.