



# MORNING MANTRA



Daily Derivatives & Market Report

OCT 13, 2022



Indian equity benchmarks ended Thursday's session in negative territory after a day's breather ahead of a key US inflation reading. Key indices made negative start as traders were cautious after India's retail inflation spiked to 7.41% in September, mainly due to costlier food items. For the ninth month in a row, retail inflation has remained above the Reserve Bank of India's tolerance level of 6%. Domestic sentiments also got hit after India's industrial growth, as per the Index of Industrial Production (IIP), slid to an 18-month low of -0.8% in August from 2.2% in July. Markets added more losses in afternoon session, as sentiment weakened after rating agency Crisil's research wing in its latest report stated that India Inc is likely to report a three per cent year-on-year fall in profits for the July-September period (Q2FY23). This fall in profitability will be the fourth straight quarter of the decline in profits for the listed companies. Profitability is seen declining 300 basis points (bps) due to elevated commodity prices.

Traders took note of Global rating agency S&P said India is facing a "mixture of factors that may shake its sovereign credit metrics". Nevertheless, it conceded that strong economic growth and external balance sheet are expected to offset risks inherent in the growing external headwinds. But if the economy witnesses a prolonged downturn in real and nominal GDP growth, "material downward pressure on the sovereign ratings could emerge, especially if large government deficits are left unchecked. However, in late afternoon session, losses got restricted, as traders took some support after Finance Minister Nirmala Sitharaman said her Budget for the next financial year will be 'very carefully structured' to help the economy sustain growth momentum and rein in prices. She identified high energy prices among the biggest problems facing the Indian economy in the near future. But, markets failed to erase all losses and closed the session with cut of over half a percent. Sentiments remained down-beat with SBI Research in its latest 'Ecowrap' report said that the unseasonal rains in different parts of India, particularly in cereal-producing states, could have a 'significantly large impact' on cereal and vegetable prices.

On the global front, European markets were trading higher despite turbulent U.K. bond market and news of more Russian missile strikes on Ukrainian towns. All Asian markets ended lower following the broadly negative cues from global markets overnight, as traders were cautious as they reacted to the US Fed's minutes from its latest monetary policy meeting and await the data on U.S. consumer price inflation later in the day. Back home, as per exchange data, foreign institutional investors (FIIs) remained net sellers in the Indian capital market on Wednesday as they sold shares worth Rs 542.36 crore. Sector wise, agriculture sector remained in limelight, as Union Minister for Agriculture and Farmers Welfare, Narendra Singh Tomar has said that the Agriculture sector is the backbone of the country and the country's rural economy and agriculture have such strength that the country can easily overcome even the adverse situations, noting that the Indian Agriculture sector has shown this during the Covid pandemic.

# MARKET SELFIE



## MARKET SUMMARY

Domestic Indices	Close	Points	% Change
SENSEX	57235.33	-390.58	-0.68
NIFTY	17014.35	-109.25	-0.64
MIDCAP	24740.93	-181.01	-0.73
SMLCAP	28520.55	-130.18	-0.45
BSEFMC	15736.52	-72.86	-0.46
AUTO	28774.94	-76.04	-0.26
POWER	4665.70	-46.16	-0.98
REALTY	3372.02	-36.73	-1.08
BSE IT	27858.84	-172.87	-0.62
BANKEX	44214.59	-539.31	-1.21
OIL GAS	18263.47	-117.80	-0.64
METAL	18683.89	24.71	0.13
INDIA VIX	20.29	0.12	0.59

## ADVANCE - DECLINE

Index	Advance	Decline	Unchanged
NSE	940	1367	46
BSE	1246	2203	113

## MARKET TURNOVER (₹ in Crs)

Segment	Current	Previous	Net %
BSE CASH	2607	2933	(11)
NSE CASH	41594	44632	(7)
NSE F&O	149480	142001	5

## KEY INDICES RATIOS

INDEX	P/E	P/B	Dividend Yield
NIFTY	20.53	4.00	1.33
SENSEX	22.09	3.27	1.25

# KEY NUMBERS TRACKER



## FII – DII ACTIVITY IN CASH SEGMENT (₹ in Crs)

FII-DII*	Buy	Sell	Net
DII	5282	4529	753
FII	4958	6594	(1636)

Note: FPI & DII Figures are provisional

## FII ACTIVITY IN DERIVATIVES SEGMENT (₹ in Crs)

FII	Buy	Sell	Net
Index Futures	4756.60	5315.01	(558)
Index Options	2333866.44	2324289.40	9577
Stock Futures	10879.81	11880.60	(1001)
Stock Options	6680.57	6586.79	94

## PUT-CALL RATIO

Index	Current	Previous
NIFTY	0.89	0.95
BANK NIFTY	0.75	0.98

## DOLLAR INDEX

Dollar Index	Current	Previous	% Change
DXY	112.87	113.32	-0.39

## 10-YEARS G-SEC YIELD

Country	Current	Previous	% Change
INDIA	7.422	7.435	-0.17
USA	3.858	3.902	-1.13

## KEY COMMODITIES TRACKER (in \$)

Commodity	Current	Change Points	% Change
Gold	1681.35	7.07	0.42
Silver	19.30	0.24	1.30
Crude-Oil	87.56	0.29	0.33
Brent-Crude	92.69	0.24	0.25

# CURRENCY FUTURES & INDEX TRENDS TRACKER



## CURRENCY FUTURES

Expiry	Close	Change Points	% Change
27 OCT -22 USD-INR	82.41	-0.01	-0.02
27 OCT -22 EUR-INR	80.28	0.14	0.18
27 OCT -22 GBP-INR	92.21	0.95	1.04
27 OCT -22 JPY- INR	56.28	-0.11	-0.20

## INDICES – SUPPORT-RESISTANCE-PIVOT LEVELS

Index	Close	S2	S1	Pivot	R1	R2
NIFTY	17014	16872	16943	17028	17099	17183
SENSEX	57235	56774	57005	57286	57517	57799
NIFTY FUTURES	17008	16847	16928	17007	17088	17167
BANK NIFTY	38624	38084	38354	38708	38978	39331
CNX IT	27506	27161	27333	27519	27692	27878
CNX MIDCAP	30545	30181	30363	30594	30776	31007
CNX SMALLCAP	9506	9400	9453	9517	9570	9634
INDIA VIX	20.29	17.34	18.81	19.88	21.35	22.42

## INDEX TREND ANALYSIS

Index	Daily	Weekly	Monthly
NIFTY	Sell	Neutral	Neutral
SENSEX	Sell	Neutral	Neutral
NIFTY FUTURES	Sell	Neutral	Neutral
BANK NIFTY	Sell	Neutral	Buy
CNX IT	Neutral	Neutral	Neutral
CNX MIDCAP	Sell	Buy	Buy
CNX SMALLCAP	Sell	Neutral	Neutral
INDIA VIX	Buy	Sell	Neutral

## SECURITIES BAN IN F&O TRADES FOR 14-09-2022

DELTACORP, IBULHSGFIN

# TECHNICAL VIEWS



## NIFTY

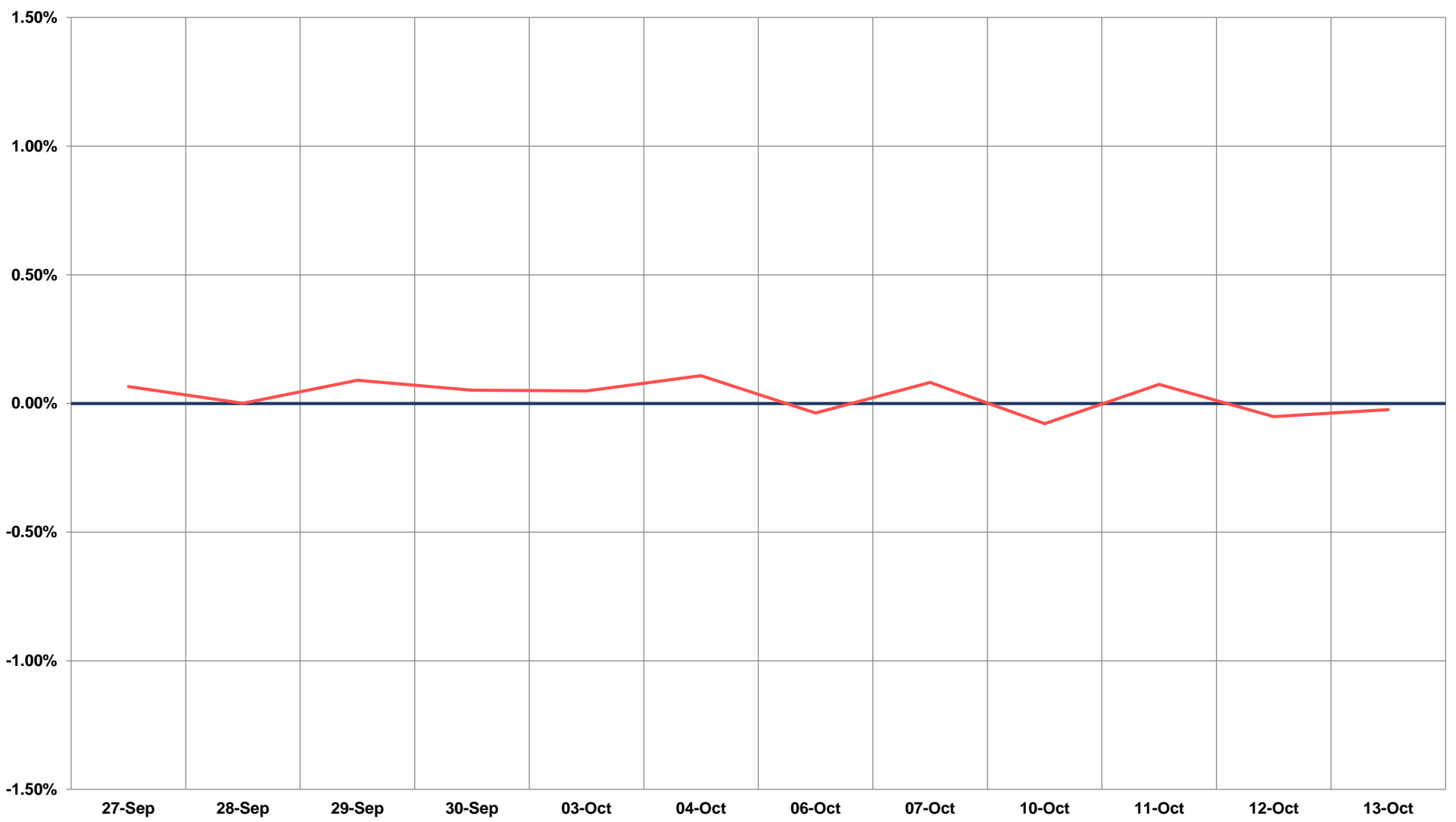
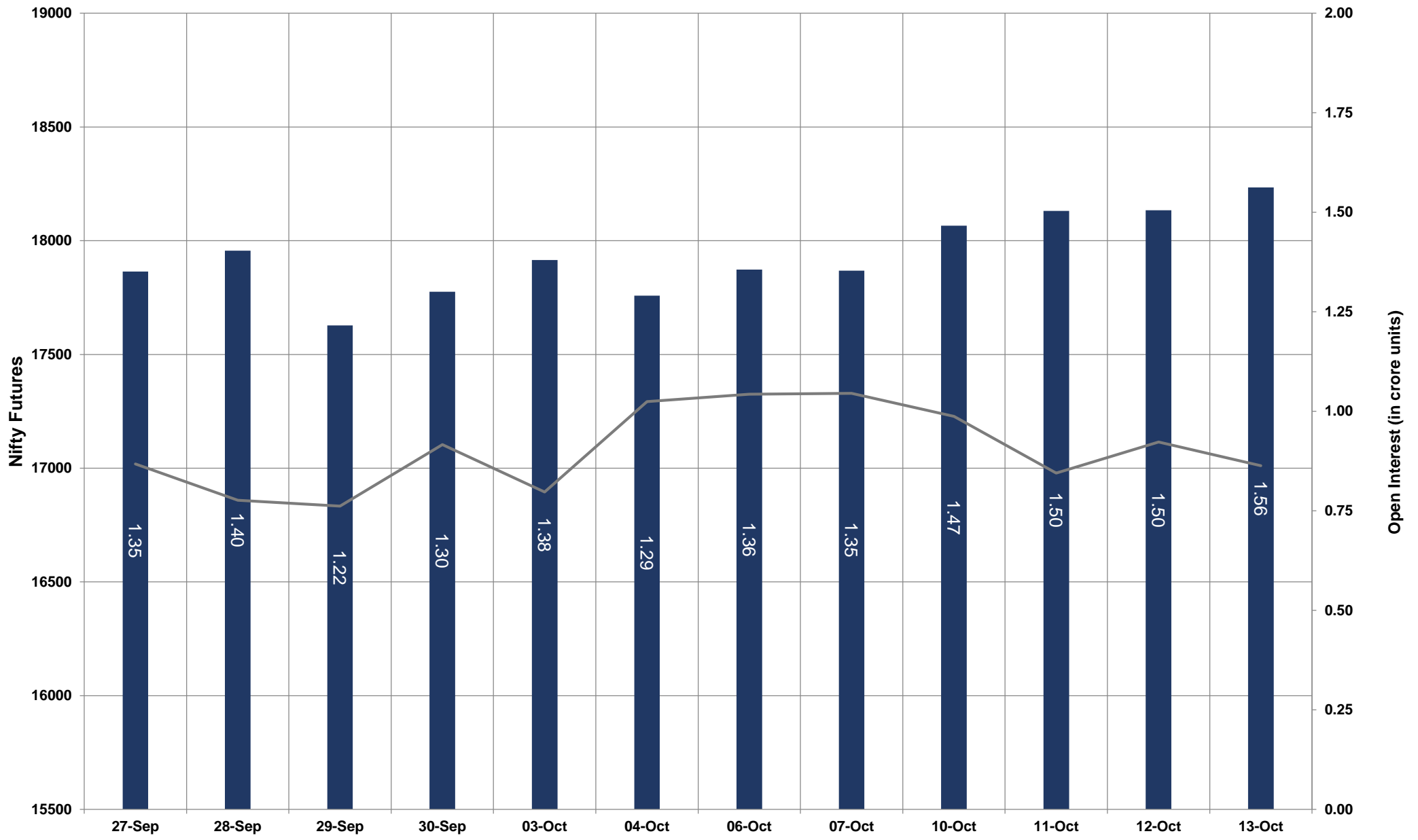


- Nifty Cash = 17014.35 (-0.64%)
- Resistance levels = 17180 and 17290
- Support levels = 16940 and 1616820

# TECHNICAL VIEWS



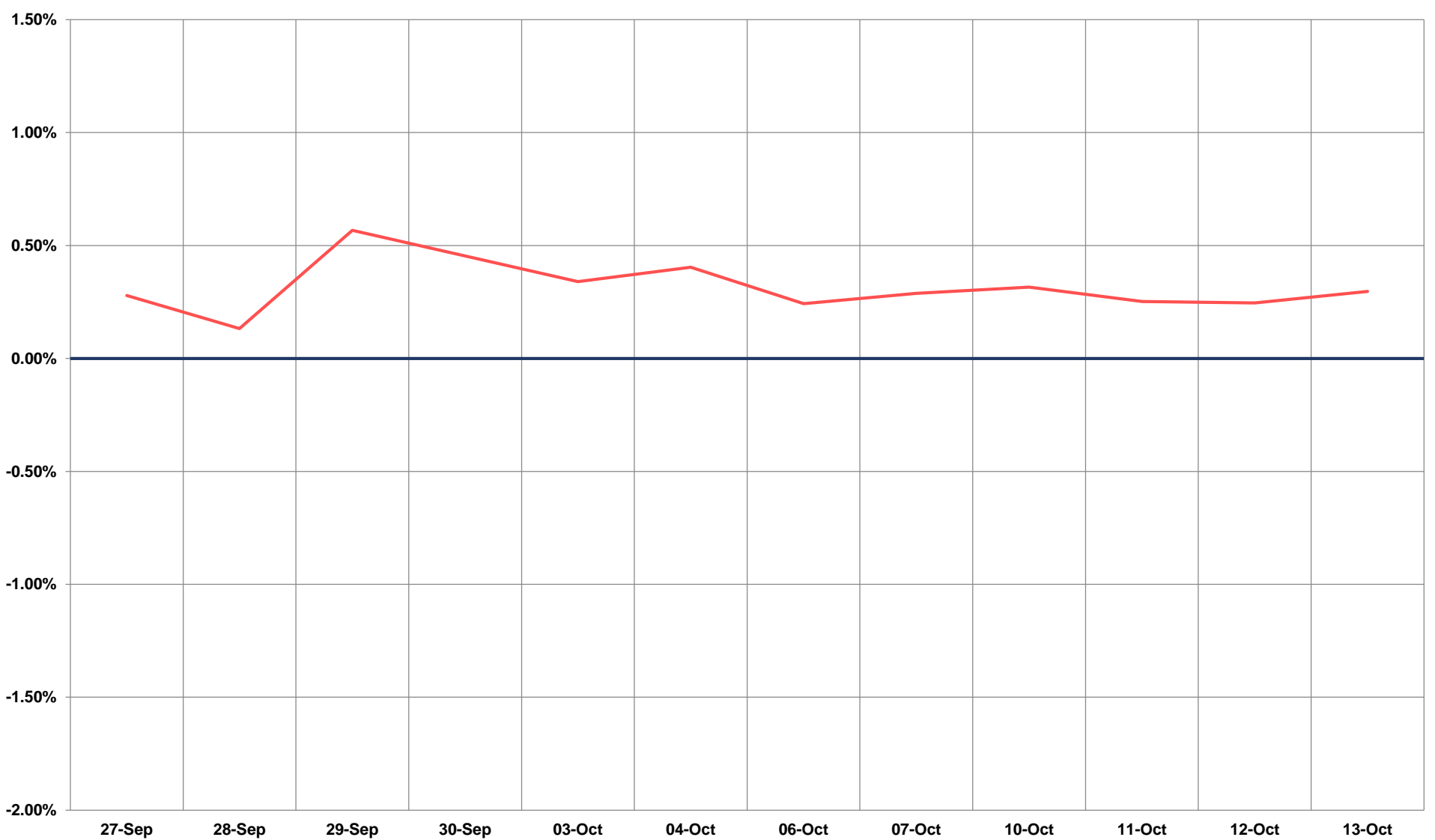
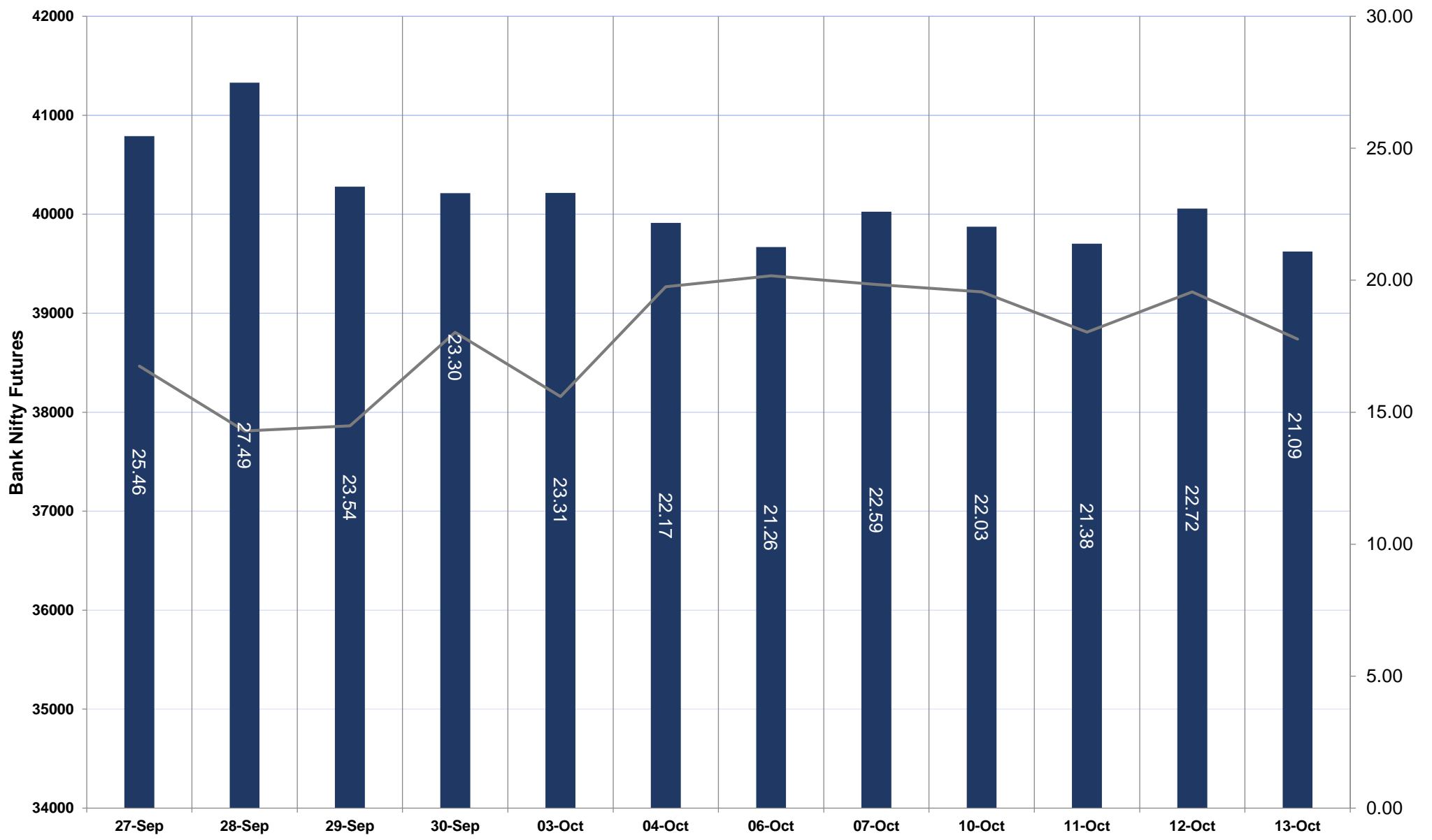
## NIFTY FUTURES



# TECHNICAL VIEWS



## BANK NIFTY FUTURES

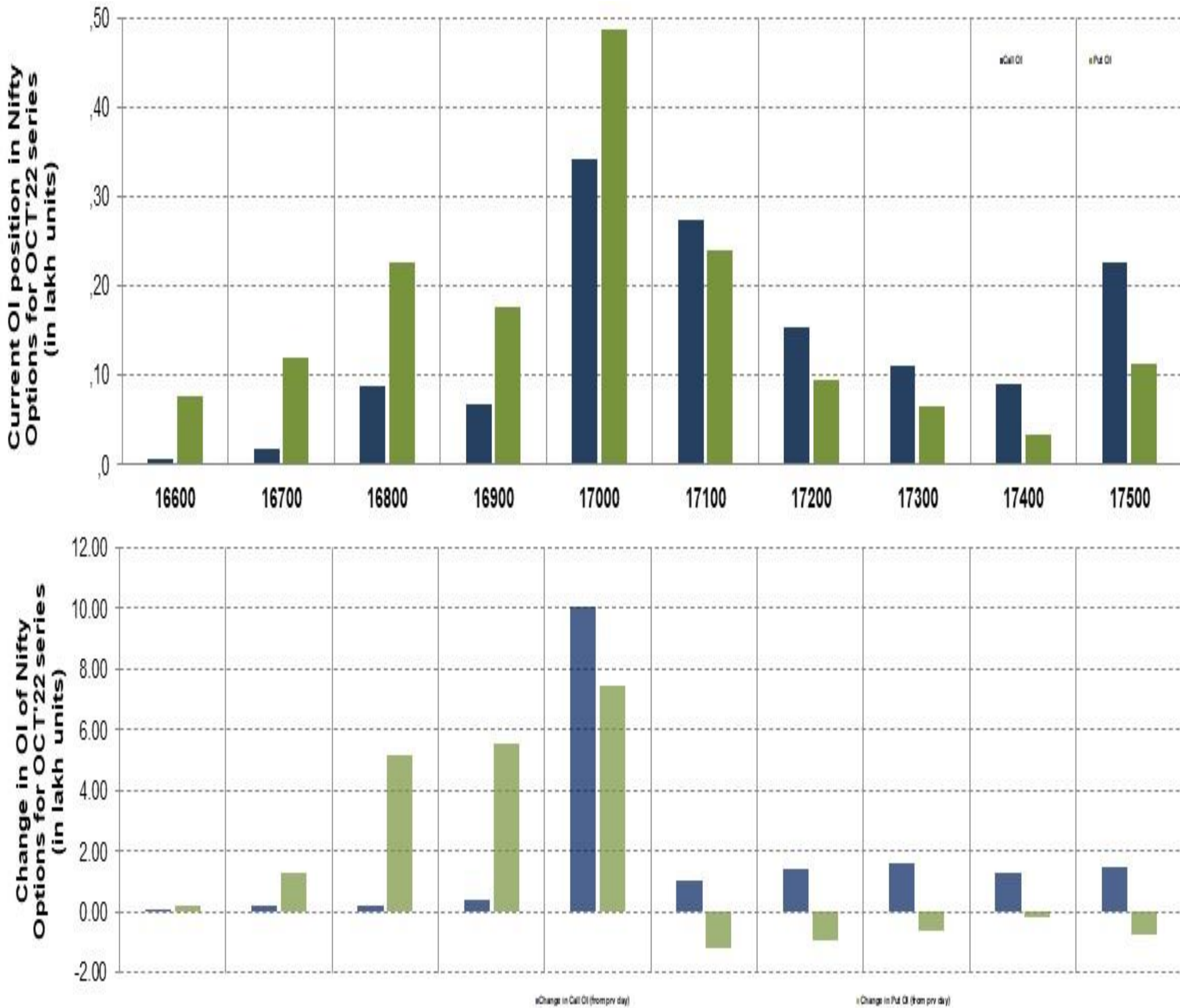




# TECHNICAL VIEWS



## NIFTY OPTIONS



- **Most Active Nifty Call** with an addition of 1.05 million in Open Interests is **Strike Price of 17000**
- **Most Active Nifty Put** with an addition of 0.74 millions in Open Interests is **Strike Price of 17000**
- **Maximum Open Interest** an outstanding was **3.43 millions** for Calls at **Strike Price of 17000**
- **Maximum Open Interest** an outstanding was **4.88 millions** for puts at **Strike Price of 17000**

# Disclaimer



The Information provided by SMS or in newsletter or in any document has been prepared by Shah Investor's Home Ltd (SIHL). The Information provided by SMS or in newsletter does not constitute an offer or solicitation for the purchase or sale of any financial instrument or as an official confirmation of any transaction. The information contained herein is from publicly available data or other sources believed to be reliable, but we do not represent that it is accurate or complete and it should not be relied on as such. SIHL or any of its affiliates/ group companies shall not be in any way responsible for any loss or damage that may arise to any person from any error in the information contained in this report or SMS. This Information provided by SMS, reports or in newsletter is provided for assistance only and is not intended to be and must not alone be taken as the basis for an investment decision. The user assumes the entire risk of any use made of this information. Each recipient of this Information provided by SMS, report or in newsletter should make such investigation as it deems necessary to arrive at an independent evaluation of an investment in the securities of companies referred to in this information provided by SMS, report or in newsletter (including the merits and risks involved), and should consult his own advisors to determine the merits and risks of such investment. The investment discussed or views expressed may not be suitable for all investors. This information is strictly confidential and is being furnished to you solely for your information.

The information should not be reproduced or redistributed or passed on directly or indirectly in any form to any other person or published, copied, in whole or in part, for any purpose. The information provided by report or SMS is not directed or intended for distribution to, or use by, any person or entity who is a citizen or resident of or located in any locality, state, country or other jurisdiction, where such distribution, publication, availability or use would be contrary to law, regulation or which would subject SIHL and affiliates/ group companies to any registration or licensing requirements within such jurisdiction. The distribution of this Information provided by SMS or in newsletter in certain jurisdictions may be restricted by law, and persons in whose possession this Information provided by SMS or in newsletter comes, should inform themselves about and observe, any such restrictions. The information given or Information provided by SMS, report or in newsletter is as of the date of the issue date of report or the date on which SMS provided and there can be no assurance that future results or events will be consistent with this information. This information is subject to change without any prior notice. SIHL reserves the right to make modifications and alterations to this statement as may be required from time to time. However, SIHL is under no obligation to update or keep the information current.

Nevertheless, SIHL is committed to providing independent and transparent recommendation to its client and would be happy to provide any information in response to specific client queries. Neither SIHL nor any of its affiliates, group companies, directors, employees, agents or representatives shall be liable for any damages whether direct, indirect, special or consequential including lost revenue or lost profits that may arise from or in connection with the use of the information. Past performance is not necessarily a guide to future performance. The disclosures of interest statements incorporated in the Information provided by SMS, report or in newsletter are provided solely to enhance the transparency and should not be treated as endorsement of the views expressed in the report. The analyst for this report certifies that all of the views expressed in this report accurately reflect his or her personal views about the subject company or companies and its or their securities, and no part of his or her compensation was, is or will be, directly or indirectly related to specific recommendations or views expressed in this report.