



MORNING MANTRA



Daily Derivatives & Market Report

OCT 25, 2022



Indian equity benchmarks ended near intraday low points amid profit booking ahead of a holiday on Wednesday for Diwali Balipratipada. Key gauges made slightly positive start, as traders took support after finance ministry in its monthly economic review stated that India's growth and stability concerns are less than that of the world at large, and estimated the country's medium-term growth rate above 6 percent. However, markets unable to maintain their gains and slipped into red zone, as traders were worried after Reserve Bank of India (RBI) said India's forex reserves dropped by \$4.50 billion to \$528.37 billion for the week ended October 14. Foreign Currency Assets (FCA), a major component of the overall reserves, saw a drop of \$2.828 billion to \$468.668 billion during the week to October 14. Markets continued their dull trade in afternoon session, as sentiments remained downbeat after foreign investors have pulled out close to Rs 6,000 crore from the Indian equity markets so far this month in the wake of strength in the US dollar against the rupee. Traders were concerned as private report stated that the government will not infuse any capital into public sector banks (PSBs) this financial year (FY23). This will happen for the first time since FY08.

Traders took note of report that attributing the rise in tax collections to demonetisation, the Reserve Bank of India (RBI) Monetary Policy Committee (MPC) member Ashima Goyal has said that it will help the nation move towards the ideal situation where low taxes are levied on a large base. Noting that demonetisation had short-term costs but some long-term benefits, she said it enhanced digitisation and formalization in the economy and reduced tax evasion, although all this has further to go. The selling was intensified in last leg of trade to touch day's low points. Sentiments continued to hit after ministry of Statistics and Programme Implementation in its latest data report has showed that a total of 986,850 people subscribed to employee provident fund during the month of August, an 11 per cent decline in comparison to the previous month.

On the global front, European markets were trading mostly in red as investors digested a slew of earnings updates and looked ahead to the policy meetings by the European Central Bank and Federal Reserve for directional cues. Asian markets ended mostly in red as concerns over China's growth prospects and a new political order in the country offset hopes of a Fed pivot. The U.S. dollar stabilized at lower levels amid growing bets that a pronounced economic slowdown will push the Federal Reserve into softening its hawkish stance after a 75-points rate hike in November. Back home, in scrip specific, Hindustan Unilever ended lower even after it has reported 22% rise in Q2 consolidated net profit. The broader indices, the BSE Mid cap index and Small cap index ended mixed.

MARKET SELFIE



MARKET SUMMARY

Domestic Indices	Close	Points	% Change
SENSEX	59543.96	-287.70	-0.48
NIFTY	17656.35	-74.40	-0.42
MIDCAP	25040.86	111.02	0.45
SMLCAP	28747.94	-100.48	-0.35
BSEFMC	15979.32	-177.61	-1.10
AUTO	29684.88	359.00	1.22
POWER	4734.71	-24.67	-0.52
REALTY	3387.71	-20.90	-0.61
BSE IT	28930.59	121.96	0.42
BANKEX	47116.99	-263.30	-0.56
OIL GAS	18838.66	98.99	0.53
METAL	18699.95	92.14	0.50
INDIA VIX	16.88	-0.54	-3.10

ADVANCE - DECLINE

Index	Advance	Decline	Unchanged
NSE	1024	1232	59
BSE	1437	1986	106

MARKET TURNOVER (₹ in Crs)

Segment	Current	Previous	Net %
BSE CASH	8128	3688	120
NSE CASH	53179	54200	(2)
NSE F&O	263015	261116	1

KEY INDICES RATIOS

INDEX	P/E	P/B	Dividend Yield
NIFTY	21.00	4.15	1.28
SENSEX	22.36	3.34	1.20

KEY NUMBERS TRACKER



FII – DII ACTIVITY IN CASH SEGMENT (₹ in Crs)

FII-DII*	Buy	Sell	Net
DII	5259	4386	873
FII	18471	18718	(247)

Note: FPI & DII Figures are provisional

FII ACTIVITY IN DERIVATIVES SEGMENT (₹ in Crs)

FII	Buy	Sell	Net
Index Futures	6279.81	6227.08	53
Index Options	898589.06	903744.00	(5155)
Stock Futures	47910.60	44919.16	2991
Stock Options	8787.74	8816.39	(29)

PUT-CALL RATIO

Index	Current	Previous
NIFTY	0.96	1.03
BANK NIFTY	1.02	1.15

DOLLAR INDEX

Dollar Index	Current	Previous	% Change
DXY	110.81	111.98	-1.06

10-YEARS G-SEC YIELD

Country	Current	Previous	% Change
INDIA	7.442	7.511	-0.92
USA	4.052	4.232	-4.25

KEY COMMODITIES TRACKER (in \$)

Commodity	Current	Change Points	% Change
Gold	1656.36	4.78	0.29
Silver	19.25	-0.04	-0.23
Crude-Oil	85.26	0.68	0.80
Brent-Crude	93.52	0.24	0.26

CURRENCY FUTURES & INDEX TRENDS TRACKER



CURRENCY FUTURES

Expiry	Close	Change Points	% Change
27 OCT -22 USD-INR	82.85	0.02	0.03
27 OCT -22 EUR-INR	81.66	0.20	0.24
27 OCT -22 GBP-INR	93.81	0.36	0.39
27 OCT -22 JPY- INR	55.64	0.08	0.14

INDICES – SUPPORT-RESISTANCE-PIVOT LEVELS

Index	Close	S2	S1	Pivot	R1	R2
NIFTY	17656	17527	17592	17702	17766	17876
SENSEX	59544	59113	59328	59705	59920	60297
NIFTY FUTURES	17652	17547	17600	17695	17747	17842
BANK NIFTY	41123	40716	40919	41225	41428	41734
CNX IT	28723	28420	28572	28696	28847	28971
CNX MIDCAP	30983	30517	30750	30908	31141	31299
CNX SMALLCAP	9730	9633	9682	9729	9777	9824
INDIA VIX	16.88	15.87	16.37	17.00	17.50	18.13

INDEX TREND ANALYSIS

Index	Daily	Weekly	Monthly
NIFTY	Buy	Buy	Neutral
SENSEX	Buy	Buy	Neutral
NIFTY FUTURES	Buy	Buy	Neutral
BANK NIFTY	Buy	Buy	Buy
CNX IT	Buy	Neutral	Neutral
CNX MIDCAP	Neutral	Neutral	Buy
CNX SMALLCAP	Buy	Neutral	Neutral
INDIA VIX	Sell	Sell	Neutral

SECURITIES BAN IN F&O TRADES FOR 27-09-2022

BHEL, PNB

TECHNICAL VIEWS



NIFTY

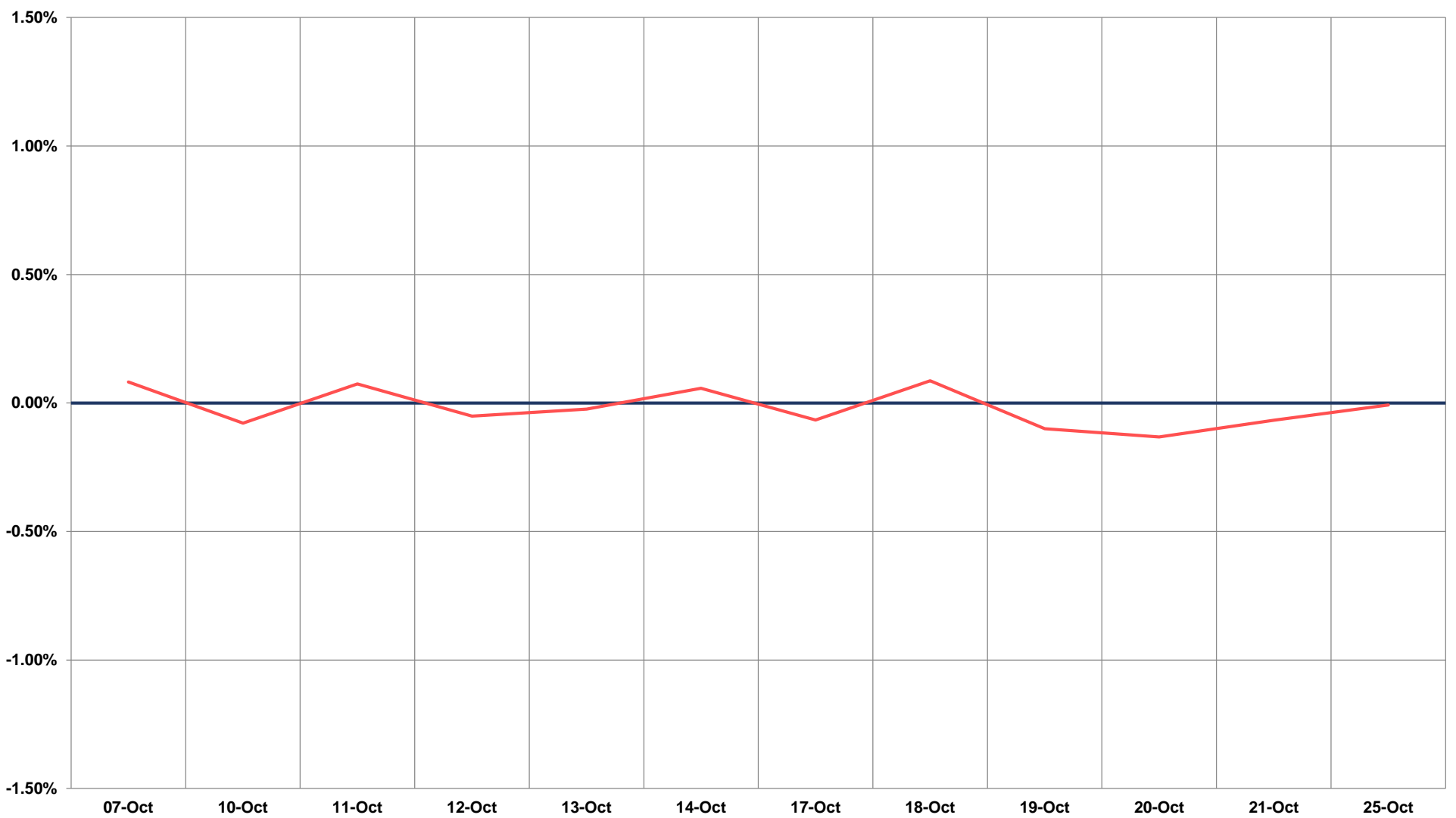
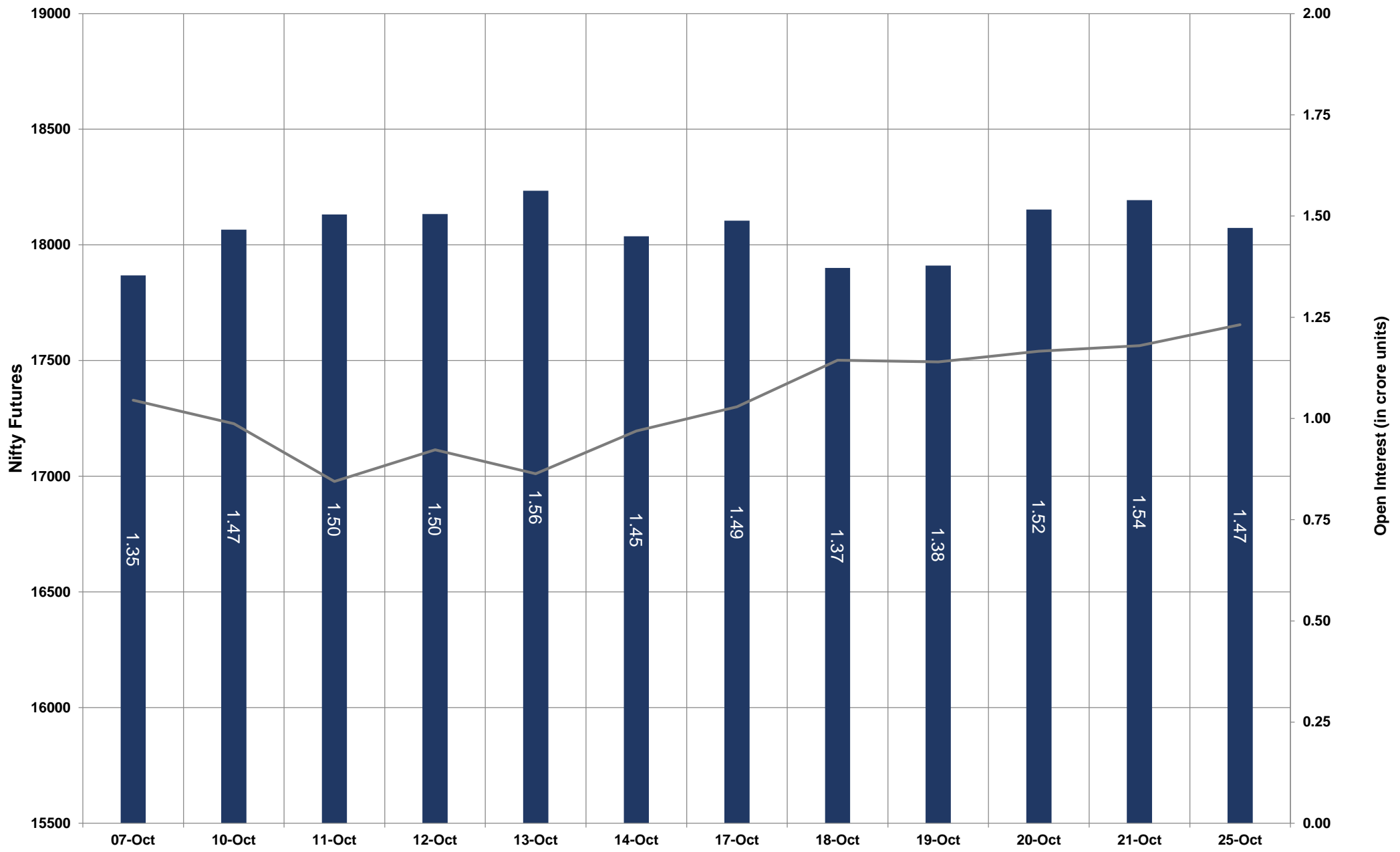


- Nifty Cash = **17656.35 (-0.42%)**
- Resistance levels = **17740** and **17820**
- Support levels = **17500** and **17420**

TECHNICAL VIEWS



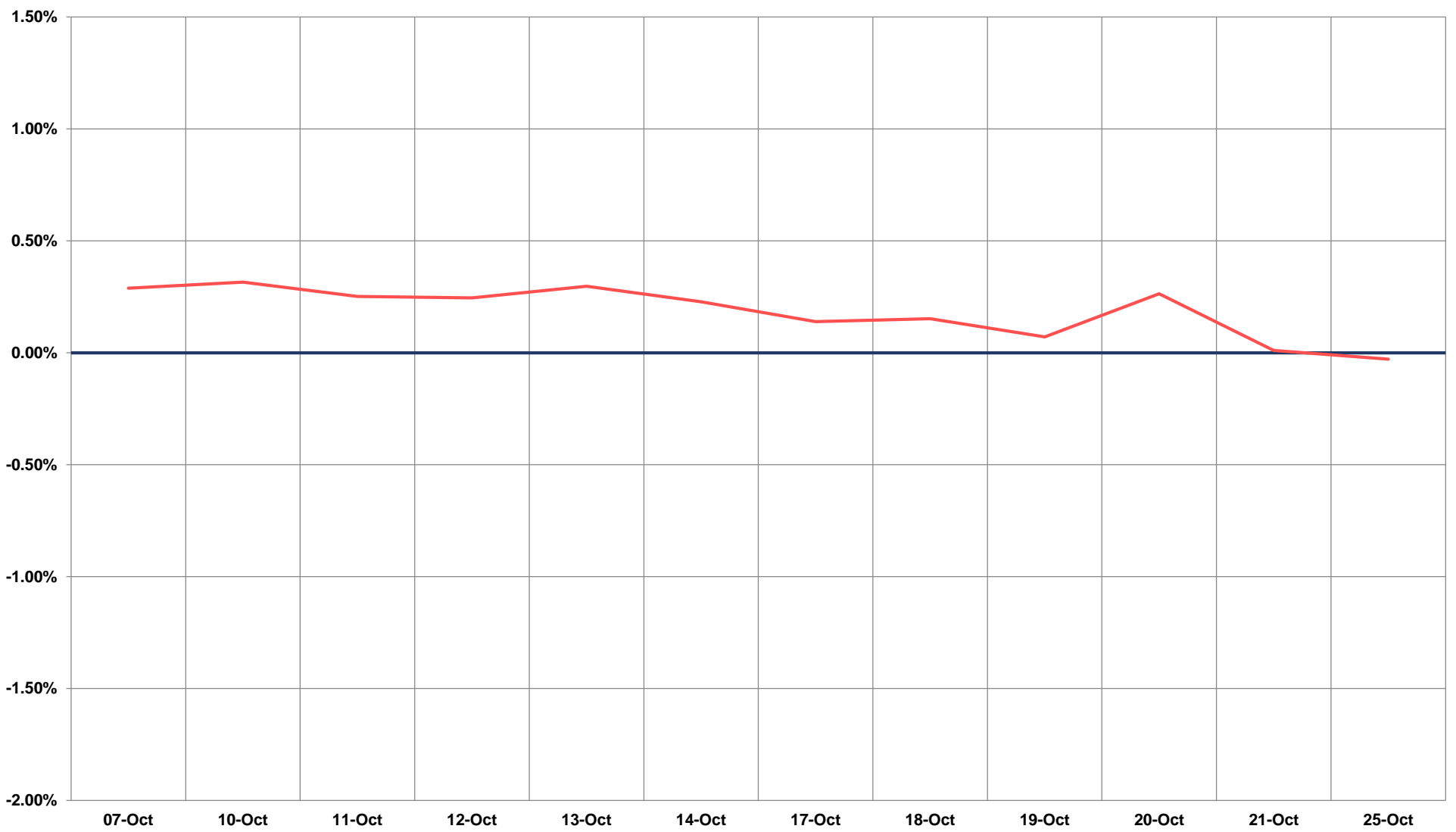
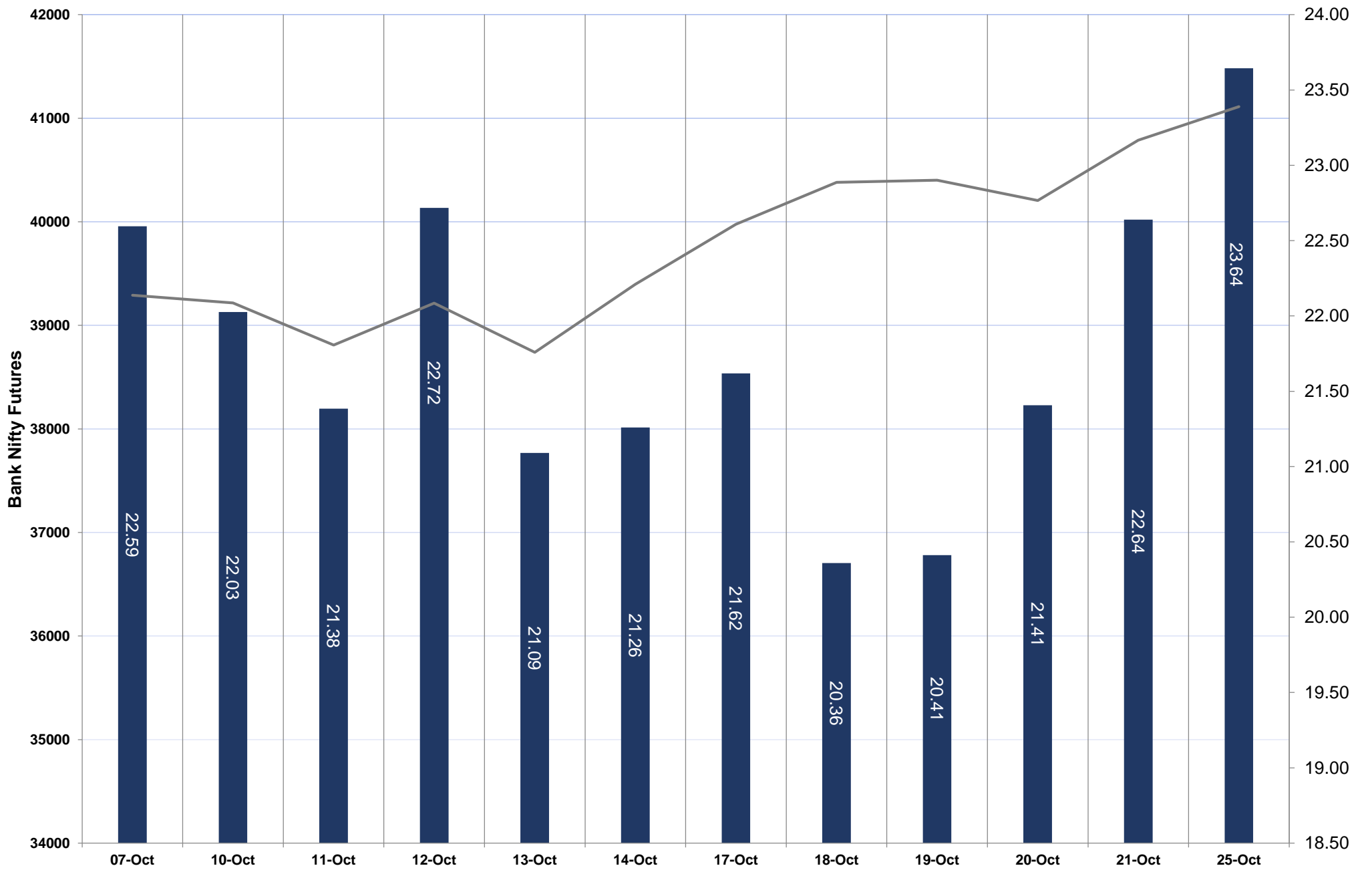
NIFTY FUTURES



TECHNICAL VIEWS



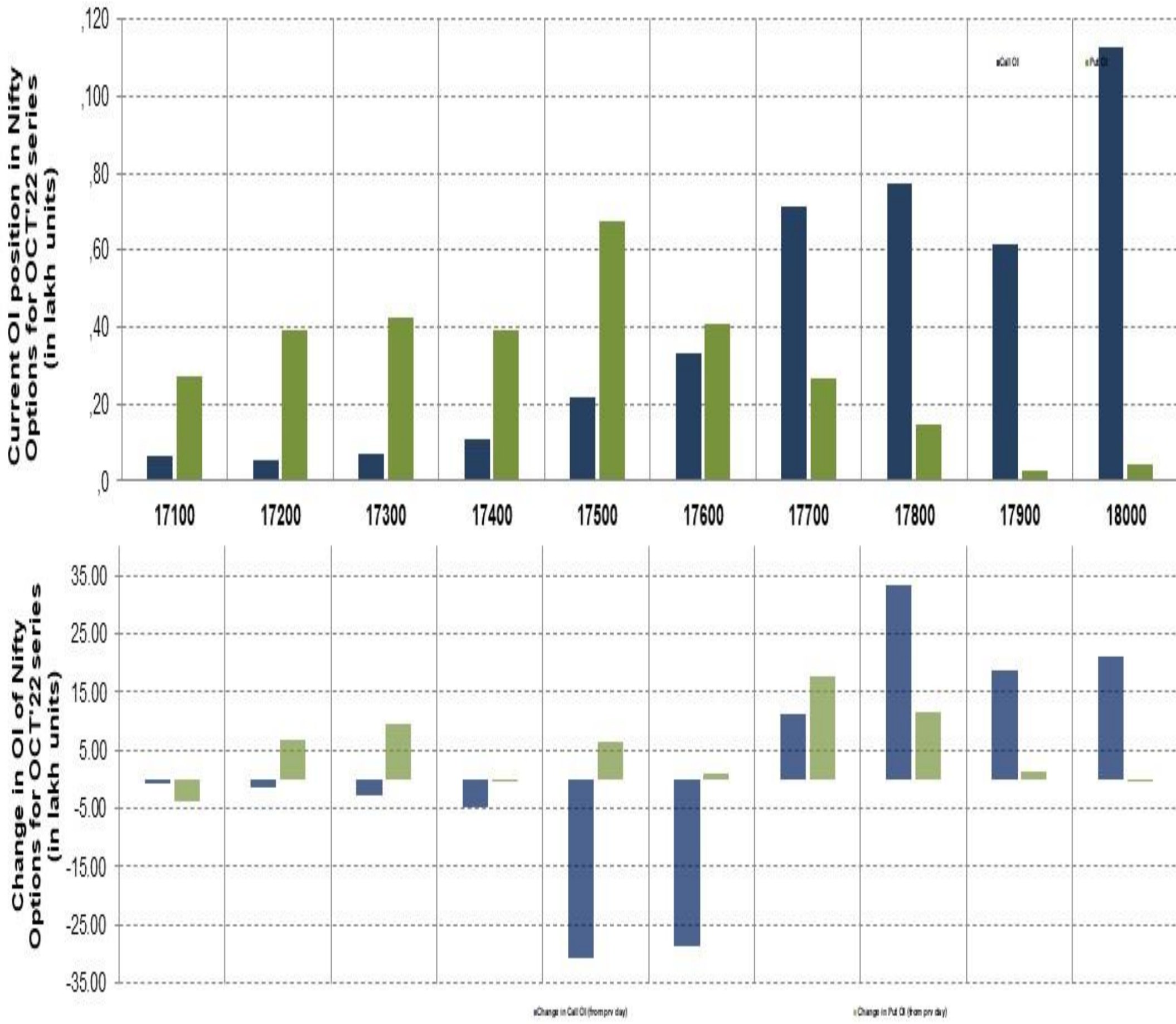
BANK NIFTY FUTURES



TECHNICAL VIEWS



NIFTY OPTIONS



- **Most Active Nifty Call** with an addition of 3.33 million in Open Interests is **Strike Price of 17800**
- **Most Active Nifty Put** with an addition of 1.77 millions in Open Interests is **Strike Price of 17700**
- **Maximum Open Interest an outstanding** was **11.29 millions** for Calls at **Strike Price of 18000**
- **Maximum Open Interest an outstanding** was **6.72 millions** for puts at **Strike Price of 17500**

Disclaimer



The Information provided by SMS or in newsletter or in any document has been prepared by Shah Investor's Home Ltd (SIHL). The Information provided by SMS or in newsletter does not constitute an offer or solicitation for the purchase or sale of any financial instrument or as an official confirmation of any transaction. The information contained herein is from publicly available data or other sources believed to be reliable, but we do not represent that it is accurate or complete and it should not be relied on as such. SIHL or any of its affiliates/ group companies shall not be in any way responsible for any loss or damage that may arise to any person from any error in the information contained in this report or SMS. This Information provided by SMS, reports or in newsletter is provided for assistance only and is not intended to be and must not alone be taken as the basis for an investment decision. The user assumes the entire risk of any use made of this information. Each recipient of this Information provided by SMS, report or in newsletter should make such investigation as it deems necessary to arrive at an independent evaluation of an investment in the securities of companies referred to in this information provided by SMS, report or in newsletter (including the merits and risks involved), and should consult his own advisors to determine the merits and risks of such investment. The investment discussed or views expressed may not be suitable for all investors. This information is strictly confidential and is being furnished to you solely for your information.

The information should not be reproduced or redistributed or passed on directly or indirectly in any form to any other person or published, copied, in whole or in part, for any purpose. The information provided by report or SMS is not directed or intended for distribution to, or use by, any person or entity who is a citizen or resident of or located in any locality, state, country or other jurisdiction, where such distribution, publication, availability or use would be contrary to law, regulation or which would subject SIHL and affiliates/ group companies to any registration or licensing requirements within such jurisdiction. The distribution of this Information provided by SMS or in newsletter in certain jurisdictions may be restricted by law, and persons in whose possession this Information provided by SMS or in newsletter comes, should inform themselves about and observe, any such restrictions. The information given or Information provided by SMS, report or in newsletter is as of the date of the issue date of report or the date on which SMS provided and there can be no assurance that future results or events will be consistent with this information. This information is subject to change without any prior notice. SIHL reserves the right to make modifications and alterations to this statement as may be required from time to time. However, SIHL is under no obligation to update or keep the information current.

Nevertheless, SIHL is committed to providing independent and transparent recommendation to its client and would be happy to provide any information in response to specific client queries. Neither SIHL nor any of its affiliates, group companies, directors, employees, agents or representatives shall be liable for any damages whether direct, indirect, special or consequential including lost revenue or lost profits that may arise from or in connection with the use of the information. Past performance is not necessarily a guide to future performance. The disclosures of interest statements incorporated in the Information provided by SMS, report or in newsletter are provided solely to enhance the transparency and should not be treated as endorsement of the views expressed in the report. The analyst for this report certifies that all of the views expressed in this report accurately reflect his or her personal views about the subject company or companies and its or their securities, and no part of his or her compensation was, is or will be, directly or indirectly related to specific recommendations or views expressed in this report.