



MORNING MANTRA



Daily Derivatives & Market Report

DEC 02, 2022



Indian equity markets snapped eight days of gaining rally on last trading day of week amid profit booked by market participants. Key gauges made negative start, as traders were cautious after data from the central bank showed that India's services exports and imports in October fell from the previous month. Services exports in October stood at \$25.38 billion, down from \$28.03 billion in September, while imports slipped to \$13.49 billion from \$16.12 billion a month earlier. Besides, investors secured profit from yesterday's rally ahead of U.S. payrolls data that could provide more cues on a shift in the Federal Reserve's rate-hike plans. Domestic sentiments remained down beat even after Finance Ministry stated that Goods and Services Tax (GST) revenues rose by 11 per cent to about Rs 1.46 lakh crore in November over the year-ago period. This is the ninth straight month when collections from GST has remained above Rs 1.40 lakh crore.

Indices magnified their losses in afternoon session, as traders remained anxious after private report stated that the protests in China against the restrictions under its Zero-Covid policy could impact India's consumer goods including gold, electronics, and engineering goods. The fall in demand due to the lockdown as well as disruption in the supply of inputs from China may impact several sectors. Meanwhile, foreign institutional investors (FIIs) net sold shares worth Rs 1,565.93 crore on December 01, according to the provisional data available on the NSE. But, in late afternoon session, markets cut some of their losses and closed the day's trade with cut of above half a percent. Sentiments remained pessimistic, amid a private report stating that India's current account deficit (CAD) may shoot up in the July-September quarter (second quarter, or Q2) of 2022-23 (FY23), with the net export ratio touching a fresh nine-year low at 5.89 per cent of gross domestic product (GDP) in Q2.

On the global front, European markets were trading mostly in red with gloomy data illustrating the difficult economic circumstance in Europe as investors cautiously await the release of the key monthly U.S. jobs data. All Asian markets ended lower as investors closely monitored news from China over its zero-Covid policy. Back home, finance ministry said the windfall tax on locally produced crude oil has been cut to Rs 4,900 per tonne from Rs 10,200 per tonne. Separately, it also reduced the windfall tax on high-speed diesel for exports to Rs 8 per litre from Rs 10.5 per litre. This includes a cess of Rs 1.5 per litre.

MARKET SELFIE



MARKET SUMMARY

Domestic Indices	Close	Points	% Change
SENSEX	62868.50	-415.69	-0.66
NIFTY	18696.10	-116.40	-0.62
MIDCAP	26321.65	209.65	0.80
SMLCAP	29911.79	206.88	0.70
BSEFMC	16424.59	-71.32	-0.43
AUTO	29978.12	-339.73	-1.12
POWER	4608.41	-57.22	-1.23
REALTY	3690.41	33.93	0.93
BSE IT	31002.34	-128.84	-0.41
BANKEX	49179.36	-156.24	-0.32
OIL GAS	20502.37	27.67	0.14
METAL	20720.24	107.02	0.52
INDIA VIX	13.45	0.09	0.67

ADVANCE - DECLINE

Index	Advance	Decline	Unchanged
NSE	1399	886	67
BSE	1948	1544	129

MARKET TURNOVER (₹ in Crs)

Segment	Current	Previous	Net %
BSE CASH	3800	3817	(0)
NSE CASH	59479	61863	(4)
NSE F&O	113007	131111	(14)

KEY INDICES RATIOS

INDEX	P/E	P/B	Dividend Yield
NIFTY	22.47	4.39	1.28
SENSEX	23.81	3.50	1.14

KEY NUMBERS TRACKER



FII – DII ACTIVITY IN CASH SEGMENT (₹ in Crs)

FII-DII*	Buy	Sell	Net
DII	5888	5176	712
FII	10621	10406	215

Note: FPI & DII Figures are provisional

FII ACTIVITY IN DERIVATIVES SEGMENT (₹ in Crs)

FII	Buy	Sell	Net
Index Futures	2235.23	6153.06	(3918)
Index Options	645228.37	646337.69	(1109)
Stock Futures	7984.99	10028.87	(2044)
Stock Options	7584.88	7629.08	(44)

PUT-CALL RATIO

Index	Current	Previous
NIFTY	0.94	1.16
BANK NIFTY	0.79	0.82

DOLLAR INDEX

Dollar Index	Current	Previous	% Change
DXY	104.62	104.72	-0.11

10-YEARS G-SEC YIELD

Country	Current	Previous	% Change
INDIA	7.221	7.210	0.15
USA	3.526	3.527	-0.02

KEY COMMODITIES TRACKER (in \$)

Commodity	Current	Change Points	% Change
Gold	1800.94	-1.3	-0.07
Silver	22.67	-0.02	-0.10
Crude-Oil	81.28	0.06	0.07
Brent-Crude	86.85	-0.03	-0.02

CURRENCY FUTURES & INDEX TRENDS TRACKER



CURRENCY FUTURES

Expiry	Close	Change Points	% Change
28 DEC -22 USD-INR	81.43	0.07	0.08
28 DEC -22 EUR-INR	85.79	0.83	0.98
28 DEC -22 GBP-INR	99.93	1.12	1.13
28 DEC -22 JPY- INR	60.89	1.08	1.81

INDICES – SUPPORT-RESISTANCE-PIVOT LEVELS

Index	Close	S2	S1	Pivot	R1	R2
NIFTY	18696	18563	18630	18706	18772	18849
SENSEX	62869	62430	62649	62899	63118	63368
NIFTY FUTURES	18815	18652	18734	18841	18923	19030
BANK NIFTY	43104	42864	42984	43058	43178	43252
CNX IT	31052	30754	30903	31019	31168	31285
CNX MIDCAP	32567	32180	32373	32482	32675	32784
CNX SMALLCAP	10080	9992	10036	10063	10106	10133
INDIA VIX	13.45	12.37	12.91	13.50	14.04	14.63

INDEX TREND ANALYSIS

Index	Daily	Weekly	Monthly
NIFTY	Buy	Buy	Buy
SENSEX	Buy	Buy	Buy
NIFTY FUTURES	Buy	Buy	Buy
BANK NIFTY	Neutral	Buy	Buy
CNX IT	Buy	Neutral	Buy
CNX MIDCAP	Buy	Buy	Buy
CNX SMALLCAP	Buy	Buy	Buy
INDIA VIX	Sell	Sell	Sell

SECURITIES BAN IN F&O TRADES FOR 05-12-2022

DELTACORP, IBULHSGFIN, PNB

TECHNICAL VIEWS



NIFTY

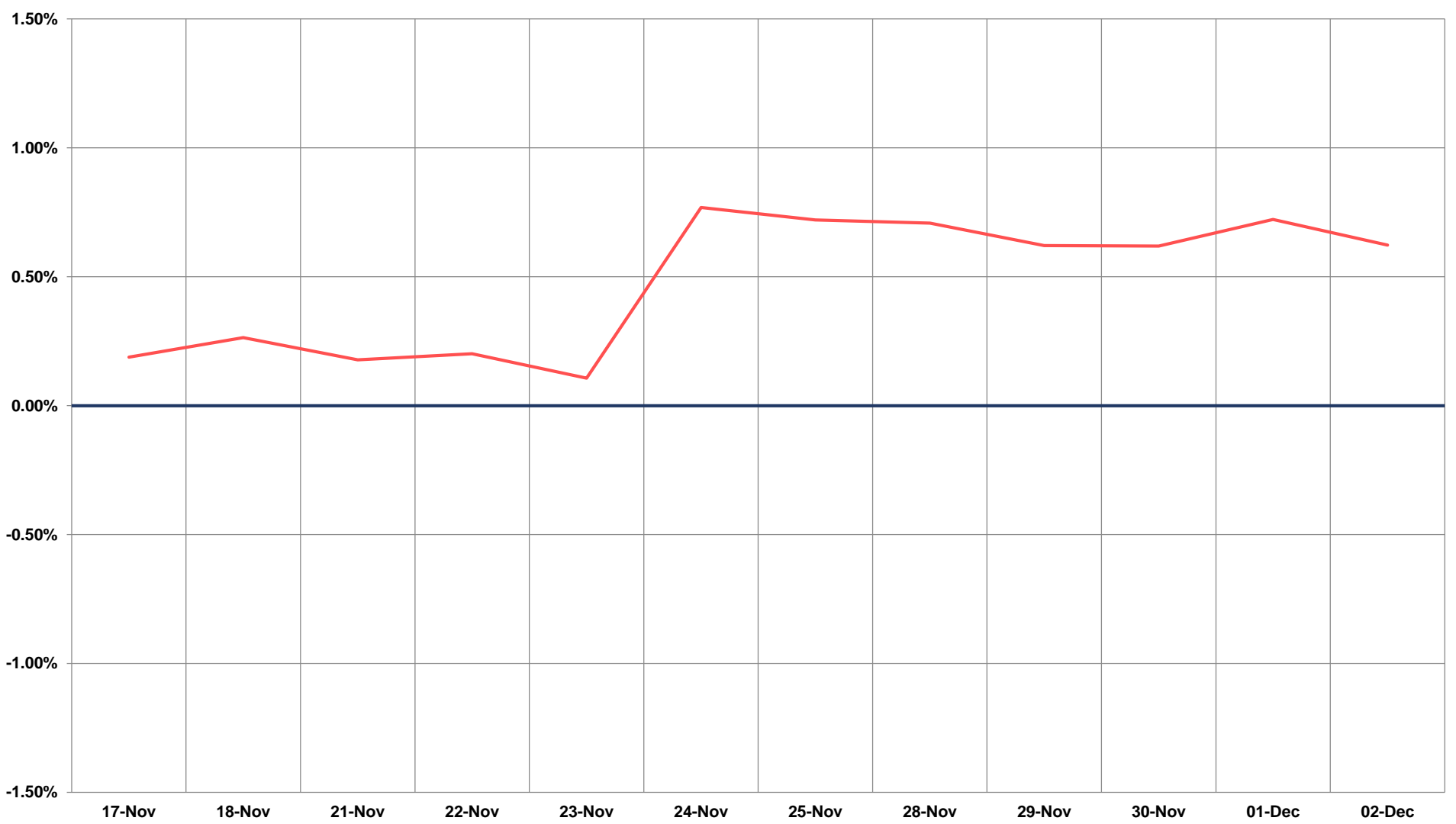
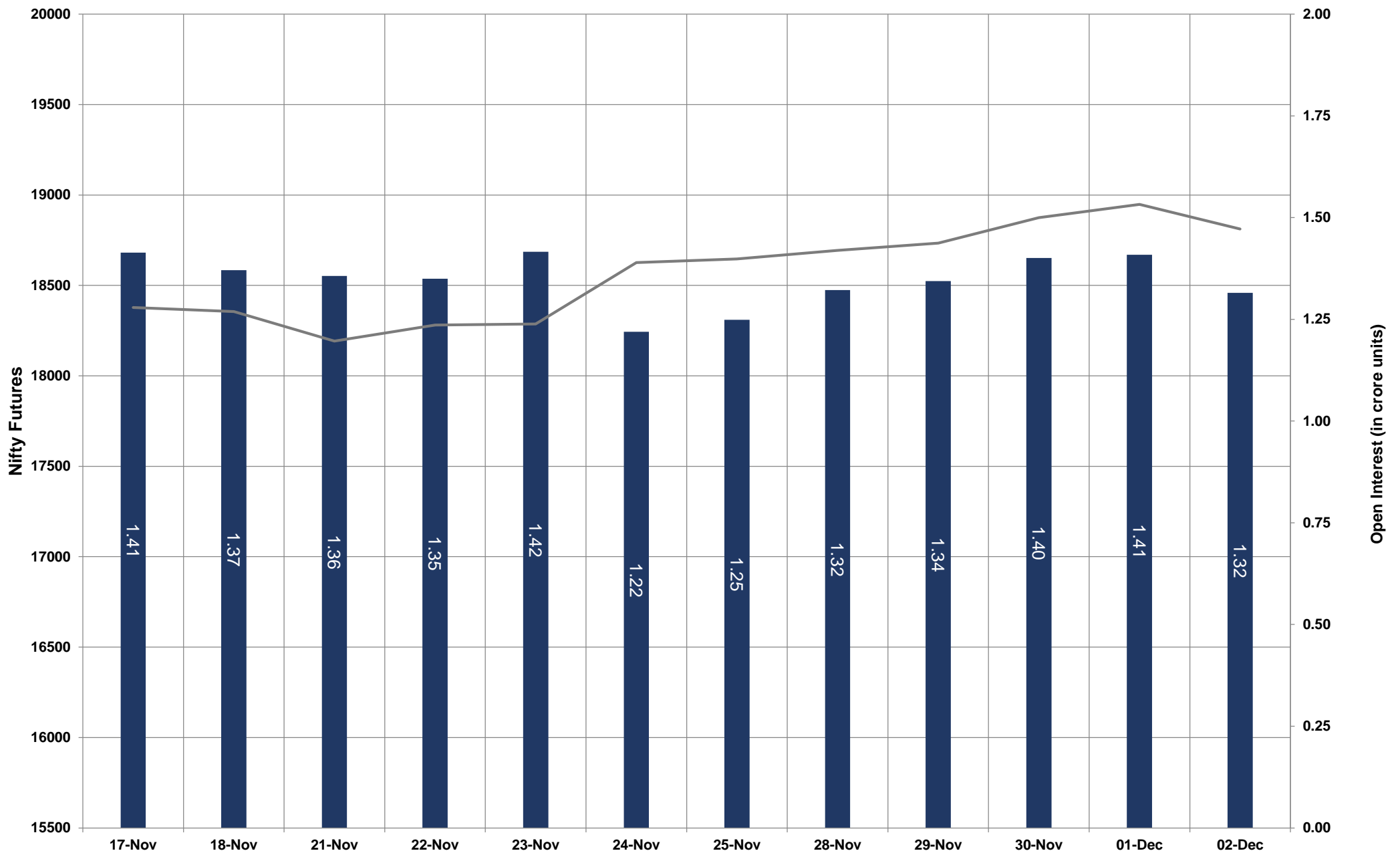


- Nifty Cash = **18696.10 (0.29%)**
- Resistance levels = **18835** and **18900**
- Support levels = **18600** and **18520**

TECHNICAL VIEWS



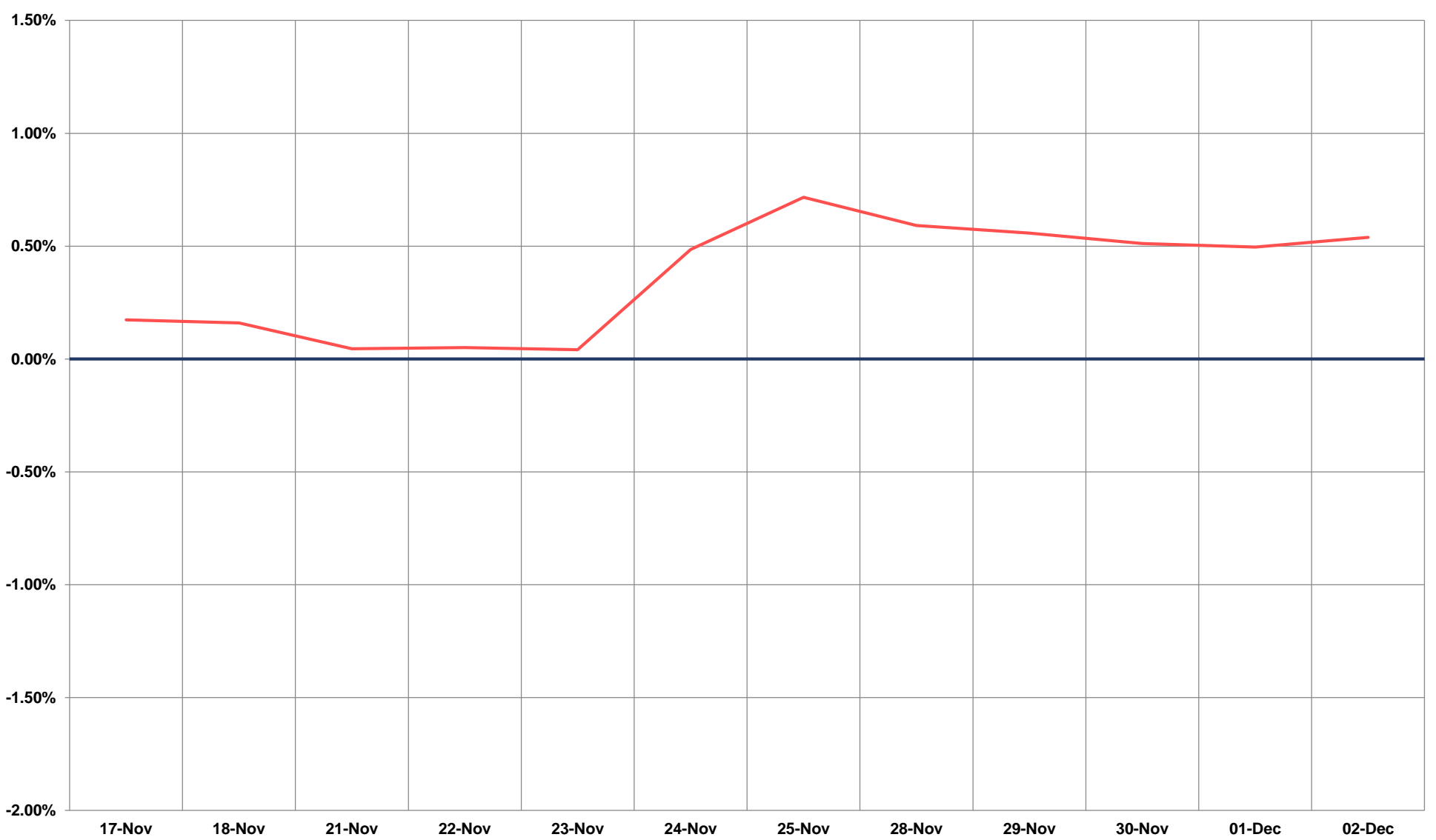
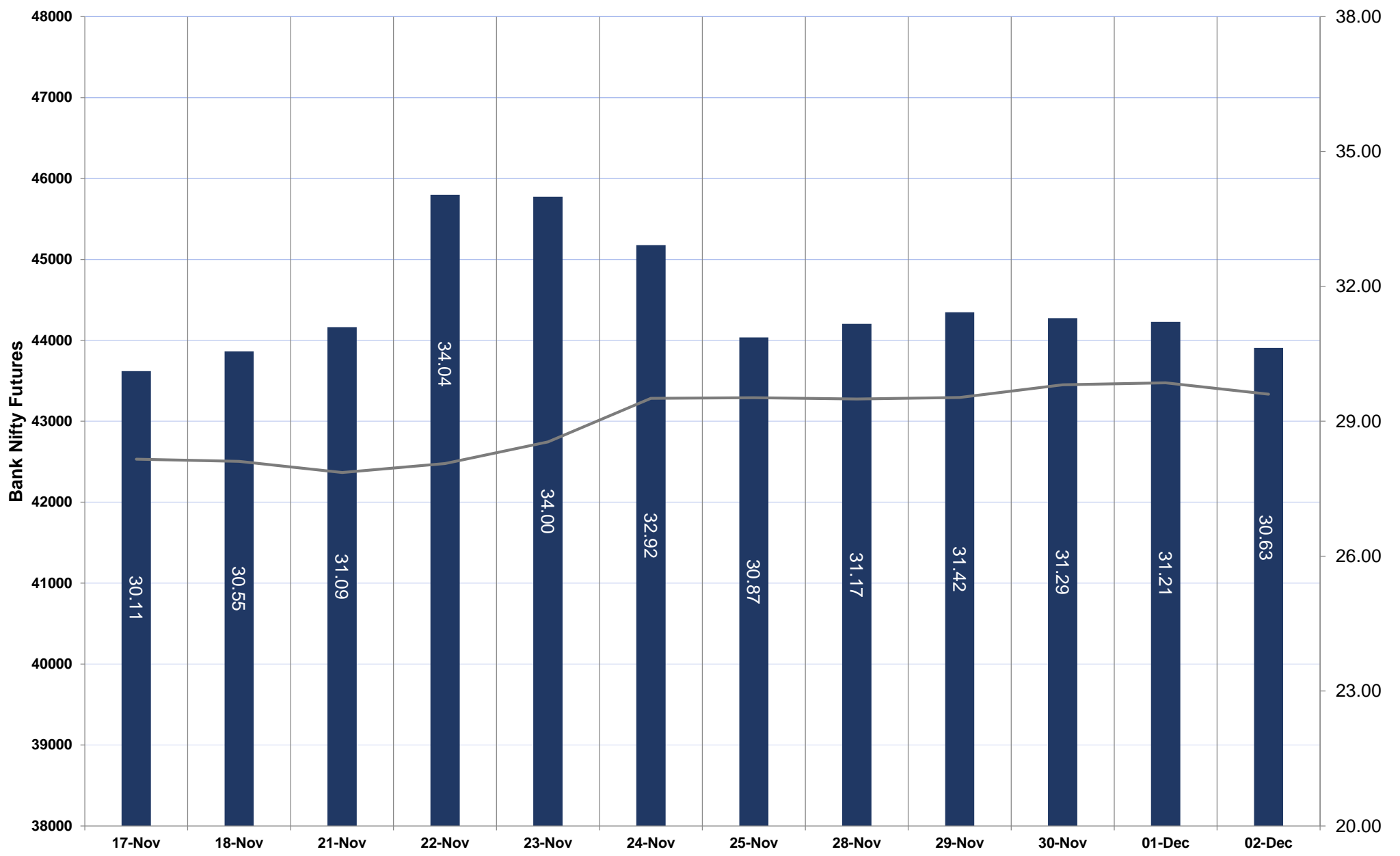
NIFTY FUTURES



TECHNICAL VIEWS



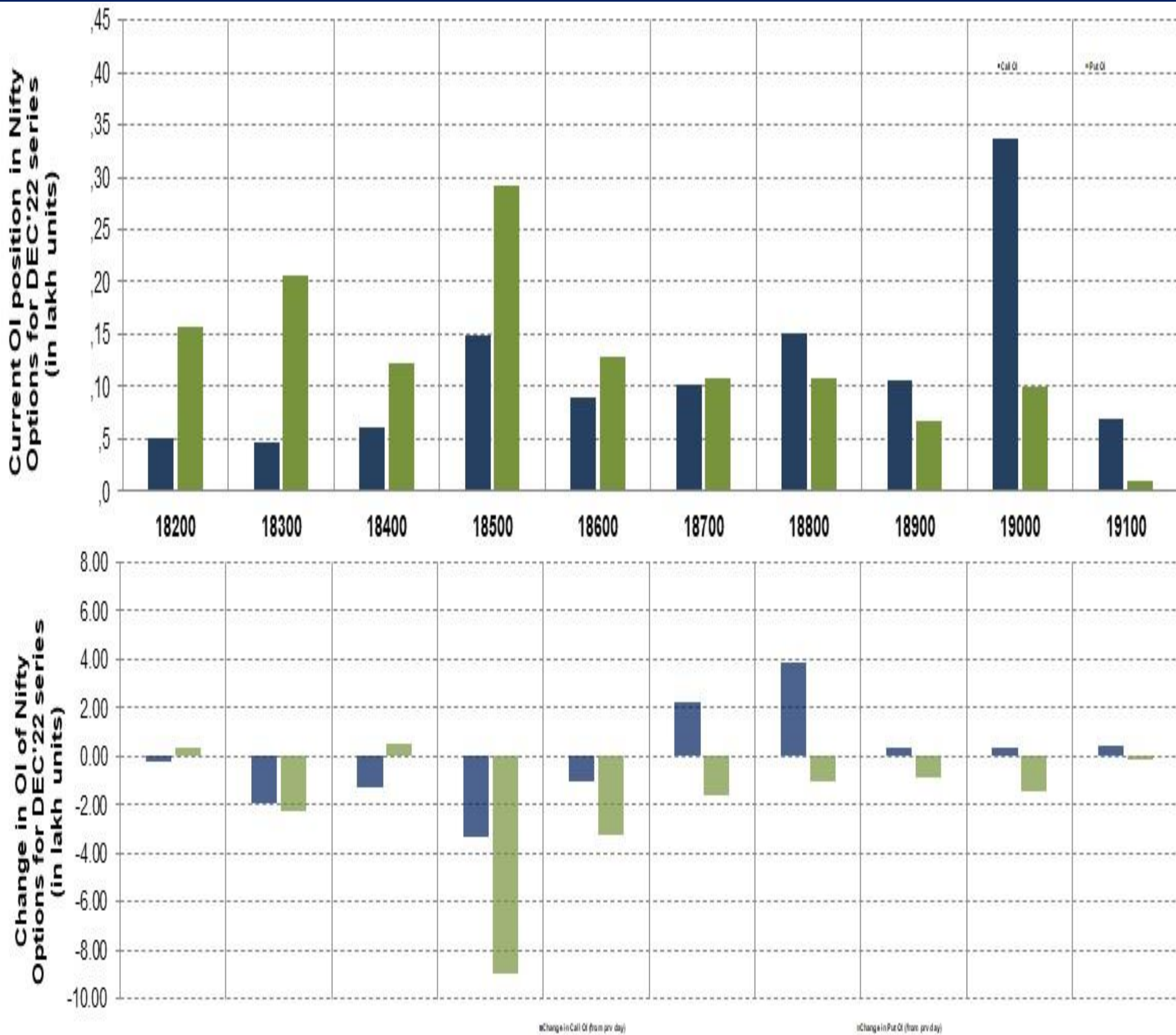
BANK NIFTY FUTURES



TECHNICAL VIEWS



NIFTY OPTIONS



- **Most Active Nifty Call** with an addition of 0.38 million in Open Interests is **Strike Price of 18800**
- **Most Active Nifty Put** with a reduction of 0.89 millions in Open Interests is **Strike Price of 18500**
- **Maximum Open Interest an outstanding** was 3.36 millions for Calls at **Strike Price of 19000**
- **Maximum Open Interest an outstanding** was 2.92 millions for puts at **Strike Price of 18500**

Disclaimer



The Information provided by SMS or in newsletter or in any document has been prepared by Shah Investor's Home Ltd (SIHL). The Information provided by SMS or in newsletter does not constitute an offer or solicitation for the purchase or sale of any financial instrument or as an official confirmation of any transaction. The information contained herein is from publicly available data or other sources believed to be reliable, but we do not represent that it is accurate or complete and it should not be relied on as such. SIHL or any of its affiliates/ group companies shall not be in any way responsible for any loss or damage that may arise to any person from any error in the information contained in this report or SMS. This Information provided by SMS, reports or in newsletter is provided for assistance only and is not intended to be and must not alone be taken as the basis for an investment decision. The user assumes the entire risk of any use made of this information. Each recipient of this Information provided by SMS, report or in newsletter should make such investigation as it deems necessary to arrive at an independent evaluation of an investment in the securities of companies referred to in this information provided by SMS, report or in newsletter (including the merits and risks involved), and should consult his own advisors to determine the merits and risks of such investment. The investment discussed or views expressed may not be suitable for all investors. This information is strictly confidential and is being furnished to you solely for your information.

The information should not be reproduced or redistributed or passed on directly or indirectly in any form to any other person or published, copied, in whole or in part, for any purpose. The information provided by report or SMS is not directed or intended for distribution to, or use by, any person or entity who is a citizen or resident of or located in any locality, state, country or other jurisdiction, where such distribution, publication, availability or use would be contrary to law, regulation or which would subject SIHL and affiliates/ group companies to any registration or licensing requirements within such jurisdiction. The distribution of this Information provided by SMS or in newsletter in certain jurisdictions may be restricted by law, and persons in whose possession this Information provided by SMS or in newsletter comes, should inform themselves about and observe, any such restrictions. The information given or Information provided by SMS, report or in newsletter is as of the date of the issue date of report or the date on which SMS provided and there can be no assurance that future results or events will be consistent with this information. This information is subject to change without any prior notice. SIHL reserves the right to make modifications and alterations to this statement as may be required from time to time. However, SIHL is under no obligation to update or keep the information current.

Nevertheless, SIHL is committed to providing independent and transparent recommendation to its client and would be happy to provide any information in response to specific client queries. Neither SIHL nor any of its affiliates, group companies, directors, employees, agents or representatives shall be liable for any damages whether direct, indirect, special or consequential including lost revenue or lost profits that may arise from or in connection with the use of the information. Past performance is not necessarily a guide to future performance. The disclosures of interest statements incorporated in the Information provided by SMS, report or in newsletter are provided solely to enhance the transparency and should not be treated as endorsement of the views expressed in the report. The analyst for this report certifies that all of the views expressed in this report accurately reflect his or her personal views about the subject company or companies and its or their securities, and no part of his or her compensation was, is or will be, directly or indirectly related to specific recommendations or views expressed in this report.