



MORNING MANTRA



Daily Derivatives & Market Report

MAR 21, 2023



Indian equity markets entered into northward phase on Tuesday, as traders opted for bargain hunting. The mood of the markets was largely positive from the beginning under the influence of optimistic global cues. The strength on markets partly reflected a positive reaction to the latest efforts to address turmoil in the banking sector, including UBS Group's (UBS) state backed acquisition of Credit Suisse (CS). Besides, investors awaited the Federal Reserve's interest rate decision. Traders worldwide were expecting the US Federal Reserve to raise interest rates by a smaller quantum of 25 basis points this month. Back home, banking counters mainly helped the Indian markets to trade higher. However, IT stocks hang out the day in red territory. The broader indices, the BSE Mid cap index and Small cap index were too supportive during the session. Tracing US markets overnight, indices made optimistic start after previous session losses, as traders picked up fundamentally strong stocks at lower level.

Further, markets continued to trade in green, as sentiments got a boost with Finance Ministry's statement that Indian economy is expected to grow at 7 per cent in FY23 despite global headwinds while retail inflation would moderate in line with wholesale inflation which fell to a 25-month low in January. Sentiments remained up-beat with Minister of State for Finance Bhagwat K Karad stating that the government has taken various reforms following which asset quality of public sector banks has improved significantly with gross NPA ratio declining from the peak of 14.6 per cent in March 2018 to 5.53 per cent in December 2022. In late afternoon session, markets soared at day's high levels, as some optimism that the Fed will hold off on raising interest rates. Finally, both Nifty and Sensex ended the session near day's high as investors opted to buy beaten down but fundamentally strong stocks.

On the global front, European markets were trading higher, with banking stocks leading the recovery following a raft of measures to stabilise the sector, while investors hoped for less-aggressive moves by the U.S. Federal Reserve at its policy meeting this week. All Asian markets ended in green, from the previous day's rout, with lenders boosted by easing concerns of another financial crisis, while focus turned to the Federal Reserve's policy decision later in the week. Back home, Ministry of Labour and Employment has said that retail inflation for agricultural and rural workers increased to 6.94 per cent and 6.87 per cent, respectively, in February 2023, due to increases in prices of medicines, doctor's fees, and bus fares, among others.

MARKET SELFIE



MARKET SUMMARY

Domestic Indices	Close	Points	% Change
SENSEX	58074.68	445.73	0.77
NIFTY	17107.50	119.10	0.70
MIDCAP	23998.69	156.64	0.66
SMLCAP	27034.33	134.94	0.50
BSEFMC	16150.99	-91.55	-0.56
AUTO	27990.44	25.46	0.09
POWER	3642.00	26.58	0.74
REALTY	3155.65	-3.83	-0.12
BSE IT	27992.06	-236.11	-0.84
BANKEX	45258.38	581.79	1.30
OIL GAS	17596.31	81.38	0.46
METAL	19119.26	32.60	0.17
INDIA VIX	15.08	-0.93	-5.81

ADVANCE - DECLINE

Index	Advance	Decline	Unchanged
NSE	1526	840	66
BSE	2003	1515	130

MARKET TURNOVER (₹ in Crs)

Segment	Current	Previous	Net %
BSE CASH	2582	3300	(22)
NSE CASH	45383	47163	(4)
NSE F&O	24718400	17377134	42

KEY INDICES RATIOS

INDEX	P/E	P/B	Dividend Yield
NIFTY	20.16	4.01	1.46
SENSEX	22.00	3.20	1.25

KEY NUMBERS TRACKER



FII – DII ACTIVITY IN CASH SEGMENT (₹ in Crs)

FII-DII*	Buy	Sell	Net
DII	7628	5682	1946
FII	5901	7355	(1455)

Note: FPI & DII Figures are provisional

FII ACTIVITY IN DERIVATIVES SEGMENT (₹ in Crs)

FII	Buy	Sell	Net
Index Futures	3336.09	3465.17	(129)
Index Options	1552271.28	1554712.47	(2441)
Stock Futures	11293.81	9097.53	2196
Stock Options	12552.67	12774.83	(222)

PUT-CALL RATIO

Index	Current	Previous
NIFTY	0.88	0.83
BANK NIFTY	1.05	0.79

DOLLAR INDEX

Dollar Index	Current	Previous	% Change
DXY	103.14	103.30	-0.15

10-YEARS G-SEC YIELD

Country	Current	Previous	% Change
INDIA	7.351	7.334	0.23
USA	3.541	3.477	1.85

KEY COMMODITIES TRACKER (in \$)

Commodity	Current	Change Points	% Change
Gold	1969.09	-7.55	-0.38
Silver	22.52	0.01	0.05
Crude-Oil	68.35	0.53	0.78
Brent-Crude	74.22	0.43	0.58

CURRENCY FUTURES & INDEX TRENDS TRACKER



CURRENCY FUTURES

Expiry	Close	Change Points	% Change
28 MAR -23 USD-INR	82.67	0.05	0.06
28 MAR -23 EUR-INR	89.04	0.66	0.74
28 MAR -23 GBP-INR	101.17	0.28	0.28
28 MAR -23 JPY- INR	62.57	-0.41	-0.65

INDICES – SUPPORT-RESISTANCE-PIVOT LEVELS

Index	Close	S2	S1	Pivot	R1	R2
NIFTY	17108	16972	17040	17084	17151	17195
SENSEX	58075	57576	57825	57979	58229	58383
NIFTY FUTURES	17169	17004	17086	17135	17218	17266
BANK NIFTY	39895	39139	39517	39744	40122	40349
CNX IT	28165	27853	28009	28280	28436	28708
CNX MIDCAP	29958	29719	29839	29917	30037	30115
CNX SMALLCAP	9065	9019	9042	9063	9086	9108
INDIA VIX	15.08	13.11	14.09	15.07	16.05	17.03

INDEX TREND ANALYSIS

Index	Daily	Weekly	Monthly
NIFTY	Neutral	Sell	Neutral
SENSEX	Neutral	Sell	Neutral
NIFTY FUTURES	Neutral	Sell	Neutral
BANK NIFTY	Neutral	Neutral	Neutral
CNX IT	Sell	Neutral	Neutral
CNX MIDCAP	Sell	Sell	Neutral
CNX SMALLCAP	Sell	Sell	Neutral
INDIA VIX	Neutral	Neutral	Neutral

SECURITIES BAN IN F&O TRADES FOR 22-03-2022

BIOCON, IBULHSGFIN

TECHNICAL VIEWS



NIFTY

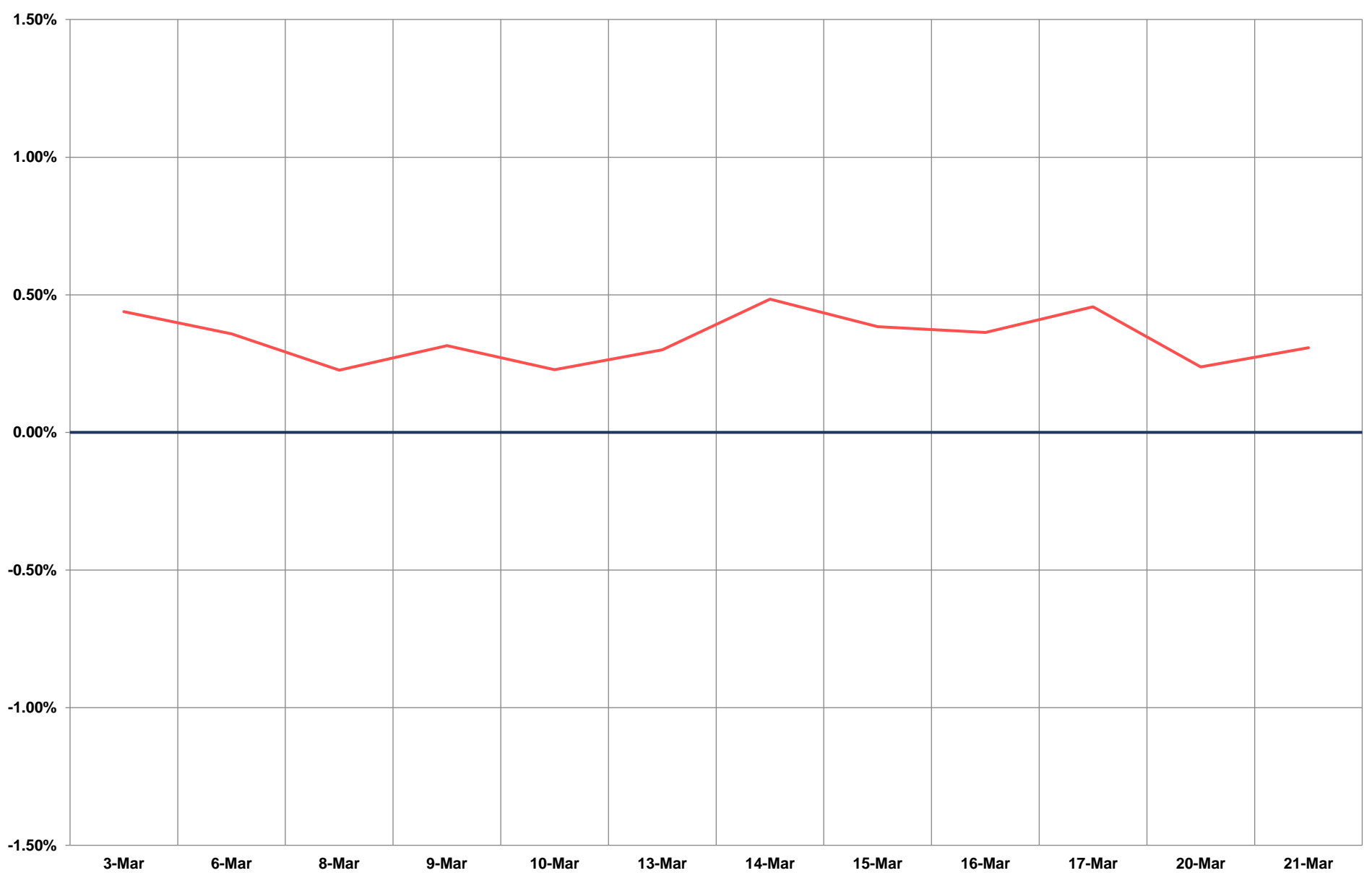
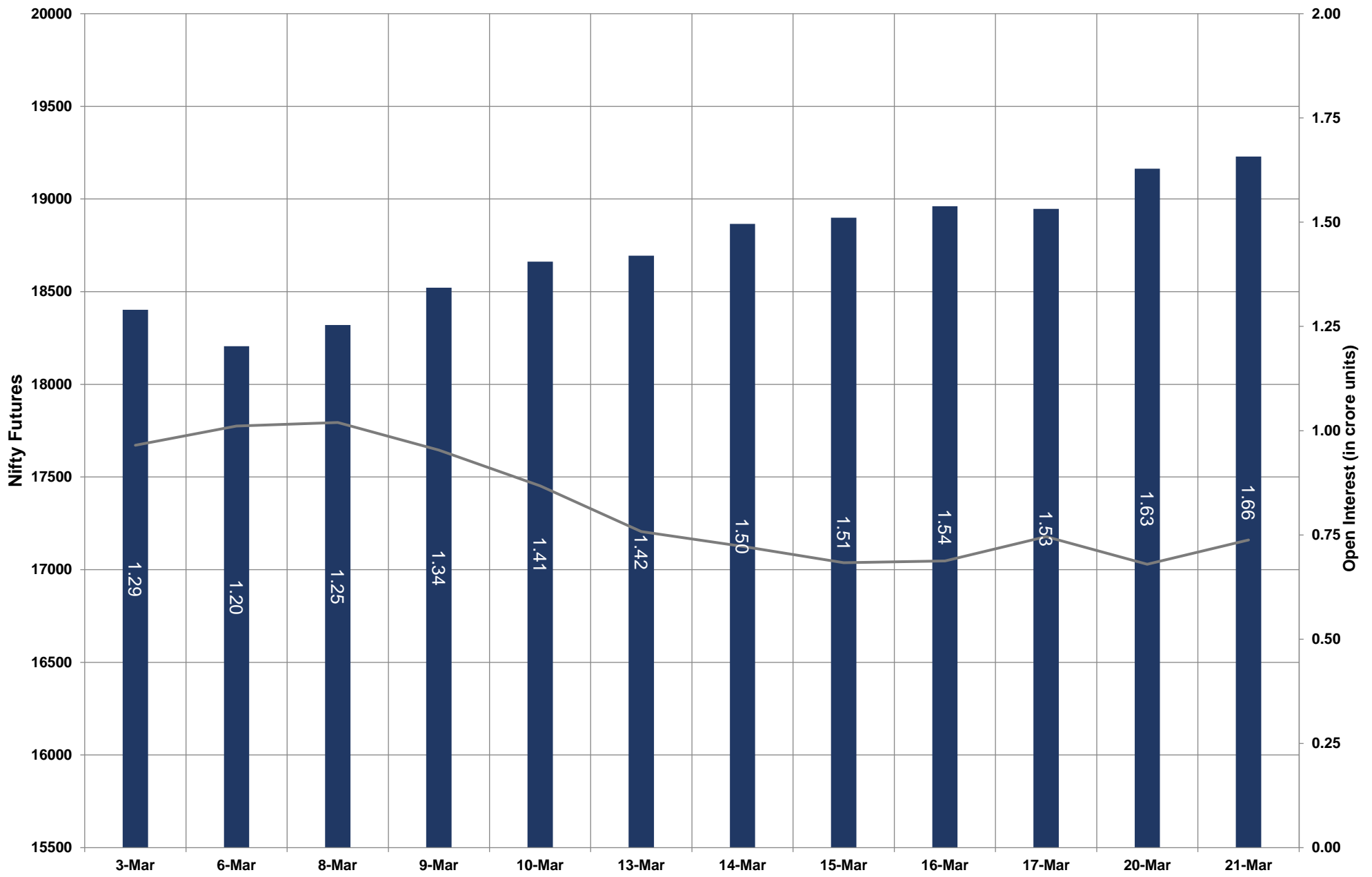


- Nifty Cash = **17107.50 (0.70%)**
- Resistance levels = **17240** and **17360**
- Support levels = **169560** and **16800**

TECHNICAL VIEWS



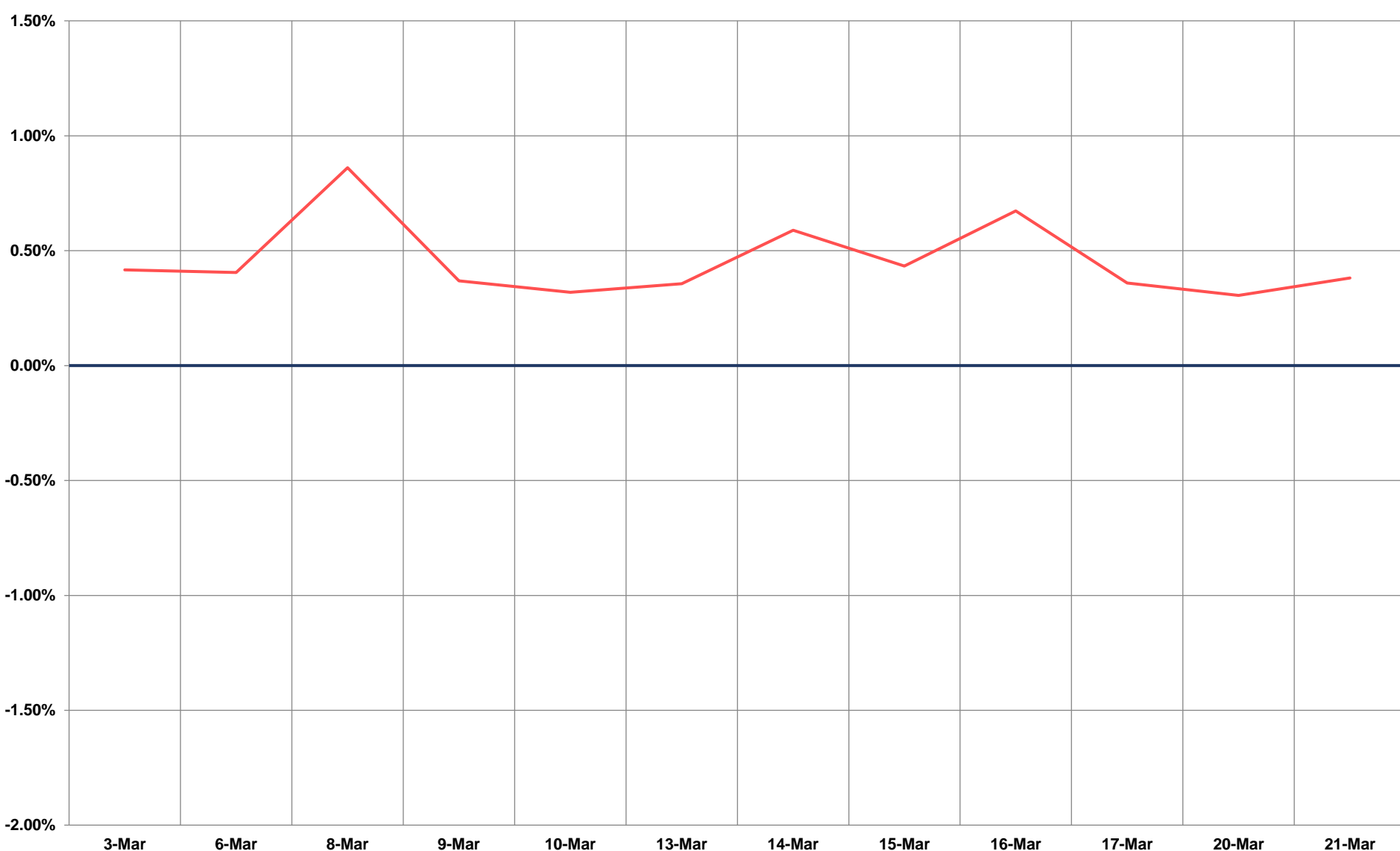
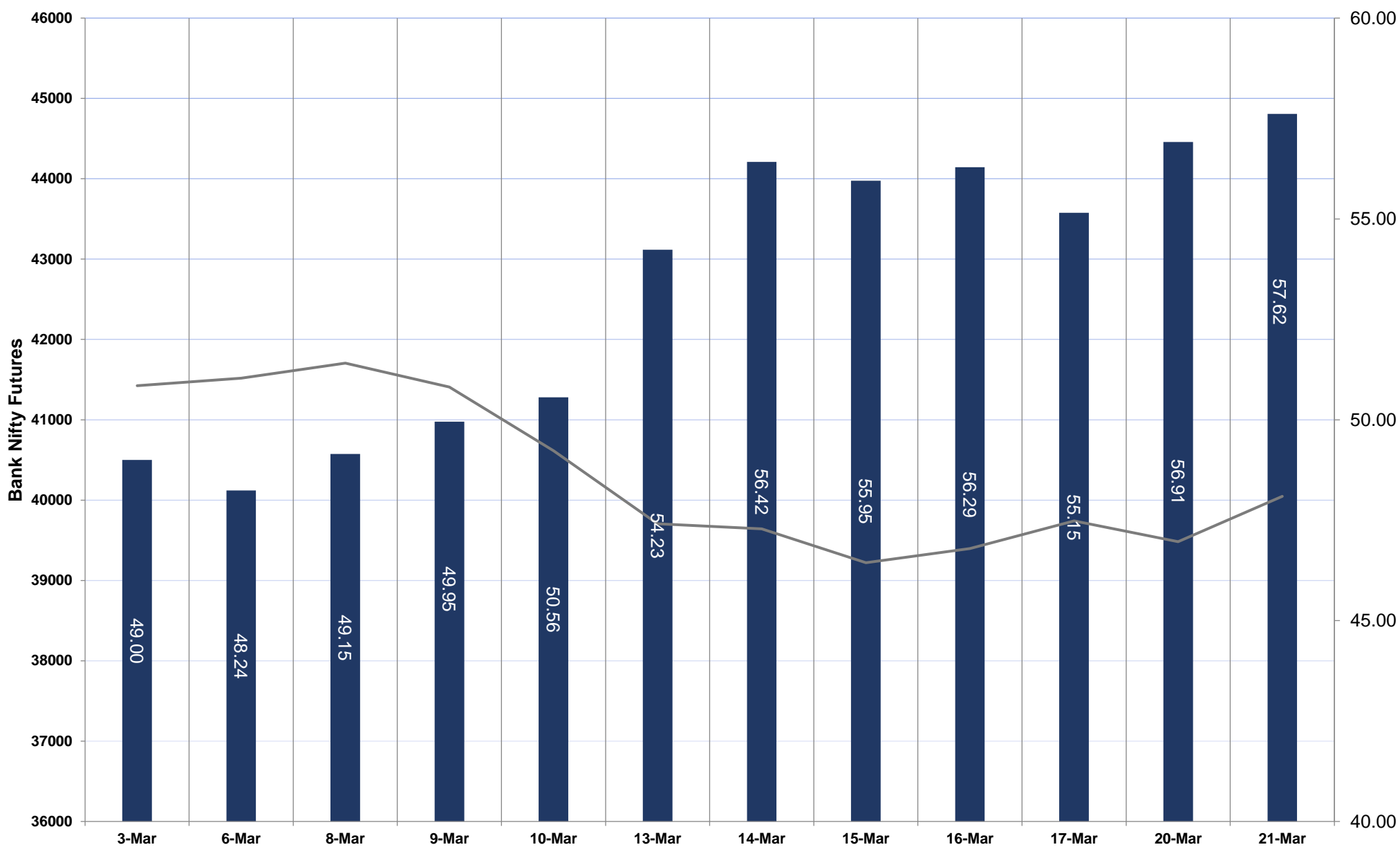
NIFTY FUTURES



TECHNICAL VIEWS



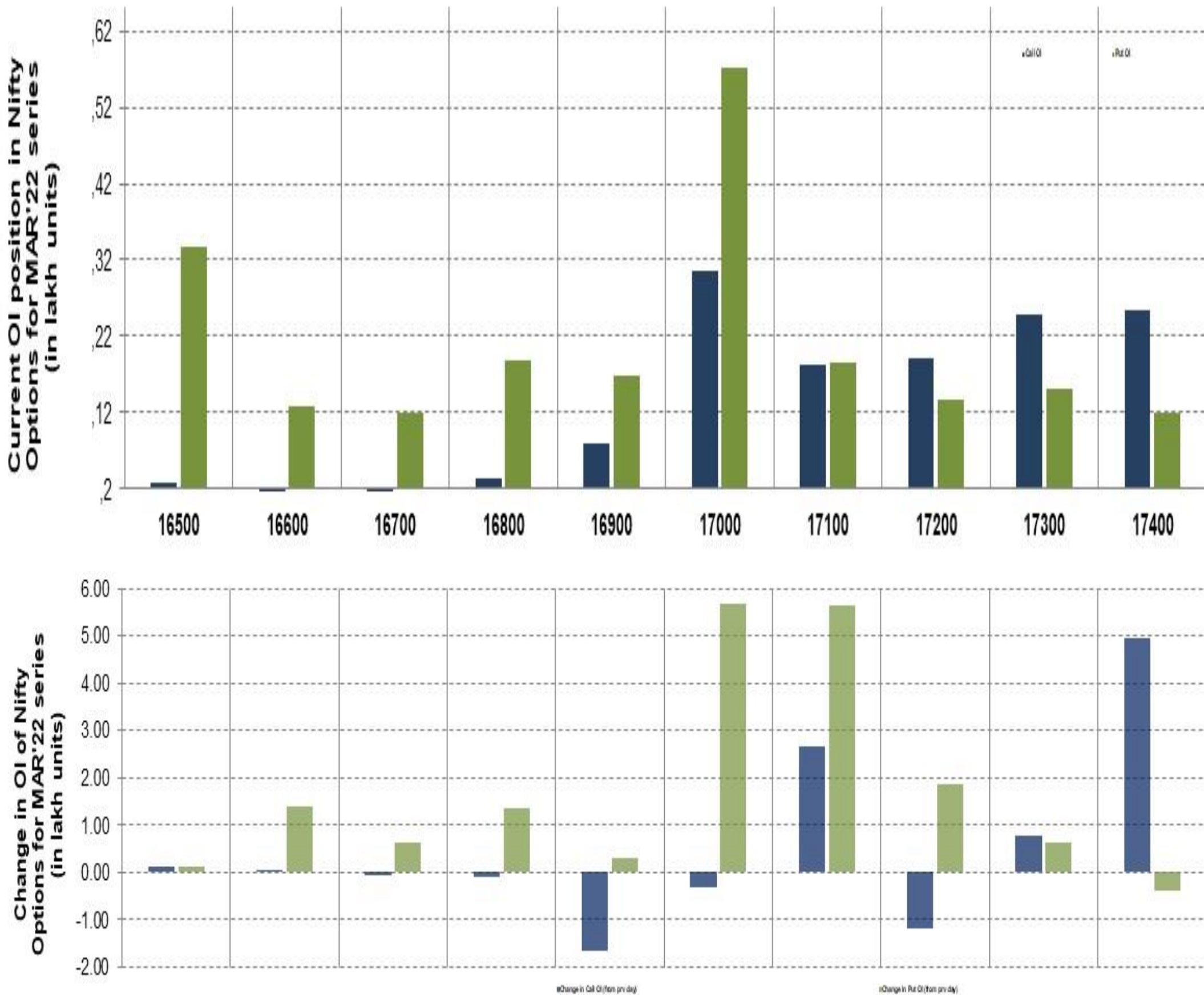
BANK NIFTY FUTURES



TECHNICAL VIEWS



NIFTY OPTIONS



- **Most Active Nifty Call** with an addition of 0.49 million in Open Interests is **Strike Price of 17400**
- **Most Active Nifty Put** with an addition of 0.56 millions in Open Interests is **Strike Price of 17000**
- **Maximum Open Interest an outstanding** was 3.05 millions for Calls at **Strike Price of 17000**
- **Maximum Open Interest an outstanding** was 5.72 millions for puts at **Strike Price of 17000**

Disclaimer



The Information provided by SMS or in newsletter or in any document has been prepared by Shah Investor's Home Ltd (SIHL). The Information provided by SMS or in newsletter does not constitute an offer or solicitation for the purchase or sale of any financial instrument or as an official confirmation of any transaction. The information contained herein is from publicly available data or other sources believed to be reliable, but we do not represent that it is accurate or complete and it should not be relied on as such. SIHL or any of its affiliates/ group companies shall not be in any way responsible for any loss or damage that may arise to any person from any error in the information contained in this report or SMS. This Information provided by SMS, reports or in newsletter is provided for assistance only and is not intended to be and must not alone be taken as the basis for an investment decision. The user assumes the entire risk of any use made of this information. Each recipient of this Information provided by SMS, report or in newsletter should make such investigation as it deems necessary to arrive at an independent evaluation of an investment in the securities of companies referred to in this information provided by SMS, report or in newsletter (including the merits and risks involved), and should consult his own advisors to determine the merits and risks of such investment. The investment discussed or views expressed may not be suitable for all investors. This information is strictly confidential and is being furnished to you solely for your information.

The information should not be reproduced or redistributed or passed on directly or indirectly in any form to any other person or published, copied, in whole or in part, for any purpose. The information provided by report or SMS is not directed or intended for distribution to, or use by, any person or entity who is a citizen or resident of or located in any locality, state, country or other jurisdiction, where such distribution, publication, availability or use would be contrary to law, regulation or which would subject SIHL and affiliates/ group companies to any registration or licensing requirements within such jurisdiction. The distribution of this Information provided by SMS or in newsletter in certain jurisdictions may be restricted by law, and persons in whose possession this Information provided by SMS or in newsletter comes, should inform themselves about and observe, any such restrictions. The information given or Information provided by SMS, report or in newsletter is as of the date of the issue date of report or the date on which SMS provided and there can be no assurance that future results or events will be consistent with this information. This information is subject to change without any prior notice. SIHL reserves the right to make modifications and alterations to this statement as may be required from time to time. However, SIHL is under no obligation to update or keep the information current.

Nevertheless, SIHL is committed to providing independent and transparent recommendation to its client and would be happy to provide any information in response to specific client queries. Neither SIHL nor any of its affiliates, group companies, directors, employees, agents or representatives shall be liable for any damages whether direct, indirect, special or consequential including lost revenue or lost profits that may arise from or in connection with the use of the information. Past performance is not necessarily a guide to future performance. The disclosures of interest statements incorporated in the Information provided by SMS, report or in newsletter are provided solely to enhance the transparency and should not be treated as endorsement of the views expressed in the report. The analyst for this report certifies that all of the views expressed in this report accurately reflect his or her personal views about the subject company or companies and its or their securities, and no part of his or her compensation was, is or will be, directly or indirectly related to specific recommendations or views expressed in this report.