



# MORNING MANTRA



Daily Derivatives & Market Report

OCT 20, 2023



The Indian equity benchmarks continued their southward journey on last trading day of week with the Sensex and the Nifty settling below their crucial 65,400 and 19,550 marks, respectively. Sentiments were downbeat till the end of the session as Federal Reserve Chair Jerome Powell suggested the US central bank is inclined to hold interest rates steady again at its next meeting while leaving open the possibility of a future hike if policymakers see further signs of resilient economic growth. Development of Middle East crisis continued to keep investors nervous. All the sectoral indices ended in red during day's trade. The broader indices, the BSE Mid cap index and Small cap index witnessed heavy selling pressure.

Markets made negative start and continued their sluggish trade tracking overnight losses on Wall Street. Foreign fund outflows also dented domestic sentiments. Provisional data from the National Stock Exchange (NSE) showed that foreign institutional investors (FII) sold shares worth Rs 1,093.47 crore on October 19. Traders were worried after the surge in the 10-year US benchmark yield overnight to briefly touch 5% has raised borrowing costs around the world. Indices remained lower in afternoon session, as investors were cautious with Reserve Bank of India -- Governor Shaktikanta Das' statement that the global economy is now facing a triad of challenges. He added that the recent surge in crude oil prices and bond yield is a major challenge. Markets extended their lackadaisical trade till end, as investors maintained risk-averse approach.

On the global front, European markets were trading lower reflecting a risk-averse environment amid concerns over rising bond yields and the escalation of the Israel-Hamas conflict. Asian markets ended mostly in red as escalating Middle East tensions and a continued surge in oil prices clouded the outlook for global economic growth. Back home, Union Food Secretary Sanjeev Chopra has said that prices of essential food items will remain stable during the festival season. He said the decision on allowing sugar exports during the current 2023-24 marketing year (October-September) will be taken after the agriculture ministry comes out with the production estimates of sugarcane.

# MARKET SELFIE



## MARKET SUMMARY

Domestic Indices	Close	Points	% Change
SENSEX	65397.62	-231.62	-0.35
NIFTY	19542.65	-82.05	-0.42
MIDCAP	31880.86	-329.52	-1.02
SMLCAP	38198.72	-291.42	-0.76
BSEFMC	18748.67	-257.80	-1.36
AUTO	37471.25	-227.43	-0.60
POWER	4472.04	-28.80	-0.64
REALTY	4776.96	-51.08	-1.06
BSE IT	31940.06	-93.30	-0.29
BANKEX	49184.35	-25.87	-0.05
OIL GAS	18585.80	-327.88	-1.73
METAL	22962.83	-358.66	-1.54
INDIA VIX	10.82	-0.08	-0.73

## ADVANCE - DECLINE

Index	Advance	Decline	Unchanged
NSE	898	1552	48
BSE	1375	2329	132

## MARKET TURNOVER (₹ in Crs)

Segment	Current	Previous	Net %
BSE CASH	7030	5360	31
NSE CASH	69917	69068	1
NSE F&O	13055358	41000421	(68)

## KEY INDICES RATIOS

INDEX	P/E	P/B	Dividend Yield
NIFTY	21.68	3.43	1.38
SENSEX	23.55	3.37	1.24

# KEY NUMBERS TRACKER



## FII – DII ACTIVITY IN CASH SEGMENT (₹ in Crs)

FII-DII*	Buy	Sell	Net
DII	6871	6862	9
FII	13646	13189	456

Note: FPI & DII Figures are provisional

## FII ACTIVITY IN DERIVATIVES SEGMENT (₹ in Crs)

FII	Buy	Sell	Net
Index Futures	3407.96	4044.34	(636)
Index Options	723746.12	715559.70	8186
Stock Futures	49879.82	50691.52	(812)
Stock Options	30913.63	30880.41	33

## PUT-CALL RATIO

Index	Current	Previous
NIFTY	0.90	0.95
BANK NIFTY	0.74	0.76

## DOLLAR INDEX

Dollar Index	Current	Previous	% Change
DXY	106.20	106.25	-0.04

## 10-YEARS G-SEC YIELD

Country	Current	Previous	% Change
INDIA	7.363	7.369	-0.08
USA	4.941	4.991	-1.00

## KEY COMMODITIES TRACKER (in \$)

Commodity	Current	Change Points	% Change
Gold	1983.62	6.61	0.34
Silver	23.19	0.14	0.64
Crude-Oil	89.32	1.00	1.13
Brent-Crude	93.29	0.91	0.99



# CURRENCY FUTURES & INDEX TRENDS TRACKER



## CURRENCY FUTURES

Expiry	Close	Change Points	% Change
27 OCT-23 USD-INR	83.12	-0.12	-0.14
27 OCT-23 EUR-INR	88.05	0.14	0.16
27 OCT-23 GBP-INR	100.93	0.00	0.00
27 OCT-23 JPY- INR	55.55	-0.12	-0.22

## INDICES – SUPPORT-RESISTANCE-PIVOT LEVELS

Index	Close	S2	S1	Pivot	R1	R2
NIFTY	19543	19477	19510	19552	19585	19627
SENSEX	65398	65174	65286	65420	65532	65667
NIFTY FUTURES	19528	19469	19499	19538	19567	19606
BANK NIFTY	43723	43413	43568	43723	43878	44033
CNX IT	31469	31233	31351	31479	31597	31724
CNX MIDCAP	39879	39417	39648	39985	40216	40553
CNX SMALLCAP	12927	12763	12845	12966	13048	13168
INDIA VIX	10.82	9.64	10.23	10.66	11.25	11.68

## INDEX TREND ANALYSIS

Index	Daily	Weekly	Monthly
NIFTY	SELL	NEUTRAL	Buy
SENSEX	SELL	NEUTRAL	Buy
NIFTY FUTURES	SELL	NEUTRAL	Buy
BANK NIFTY	SELL	NEUTRAL	Buy
CNX IT	SELL	NEUTRAL	Buy
CNX MIDCAP	NEUTRAL	NEUTRAL	Buy
CNX SMALLCAP	NEUTRAL	NEUTRAL	Buy
INDIA VIX	SELL	NEUTRAL	SELL

## SECURITIES BAN IN F&O TRADES FOR 23-10-2022

IBULHSGFIN

# TECHNICAL VIEWS



## NIFTY

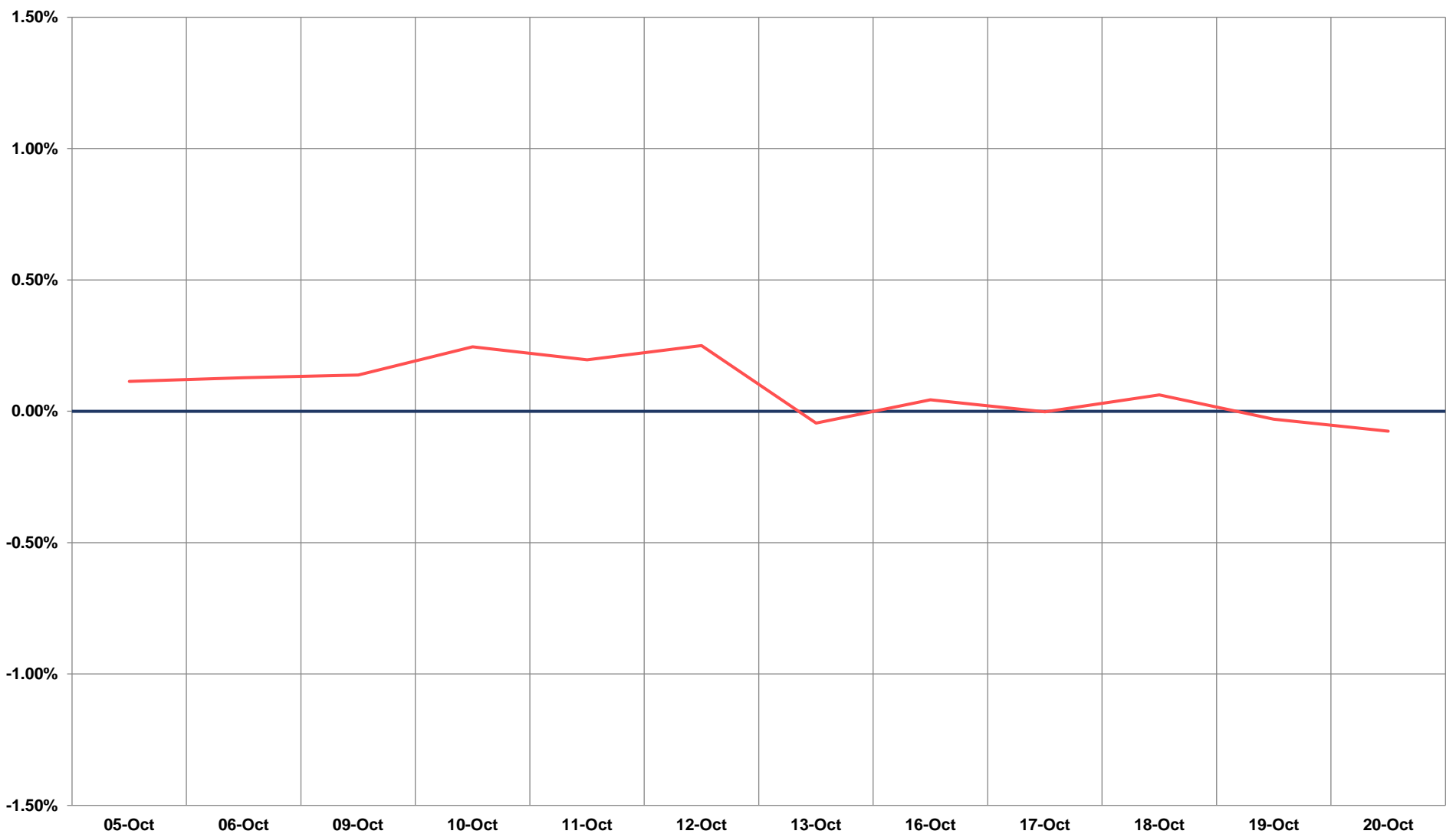
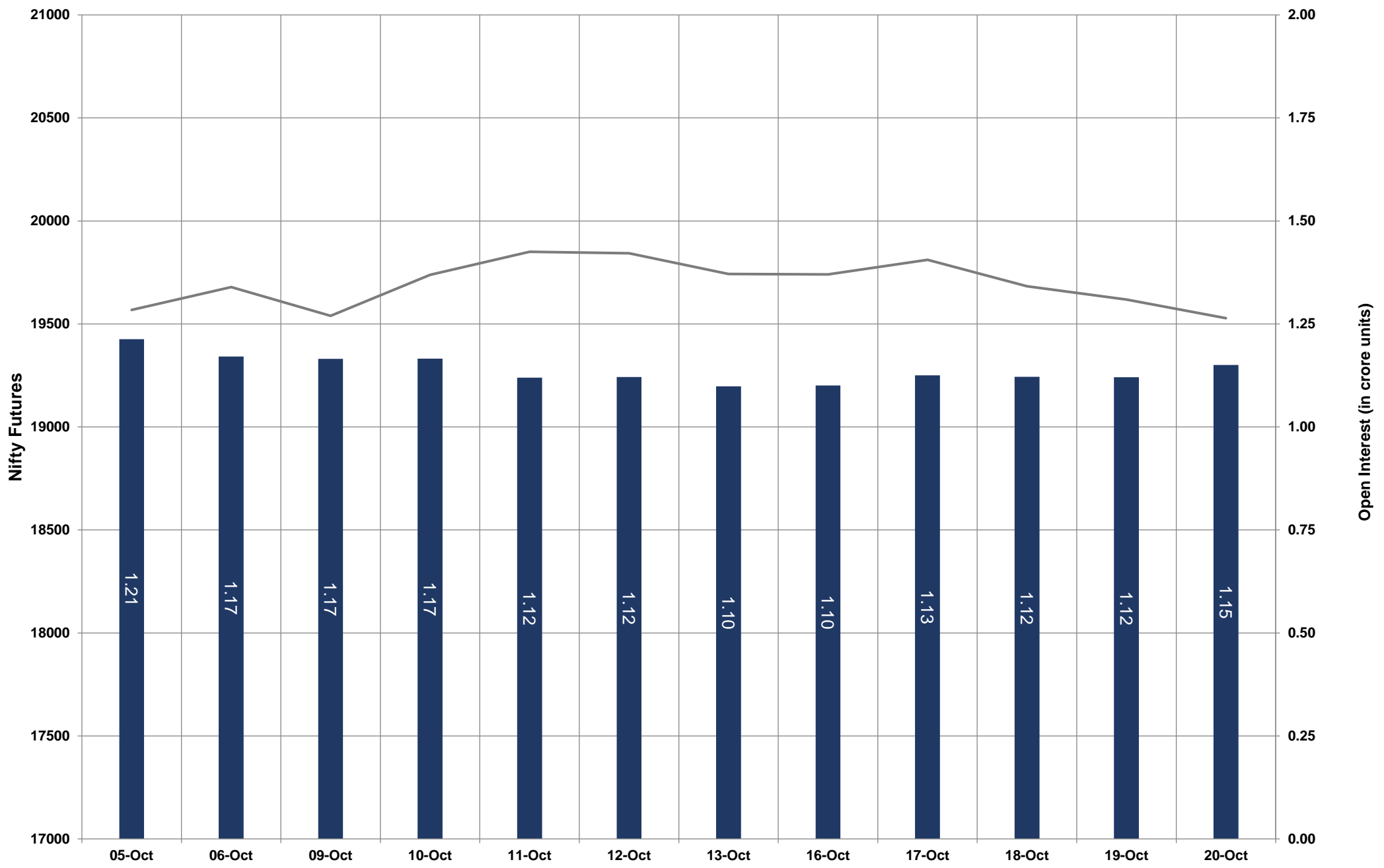


- Nifty Cash = **19542.65 (-0.42%)**
- Resistance levels = **19770** and **19850**
- Support levels = **19490** and **19400**

# TECHNICAL VIEWS



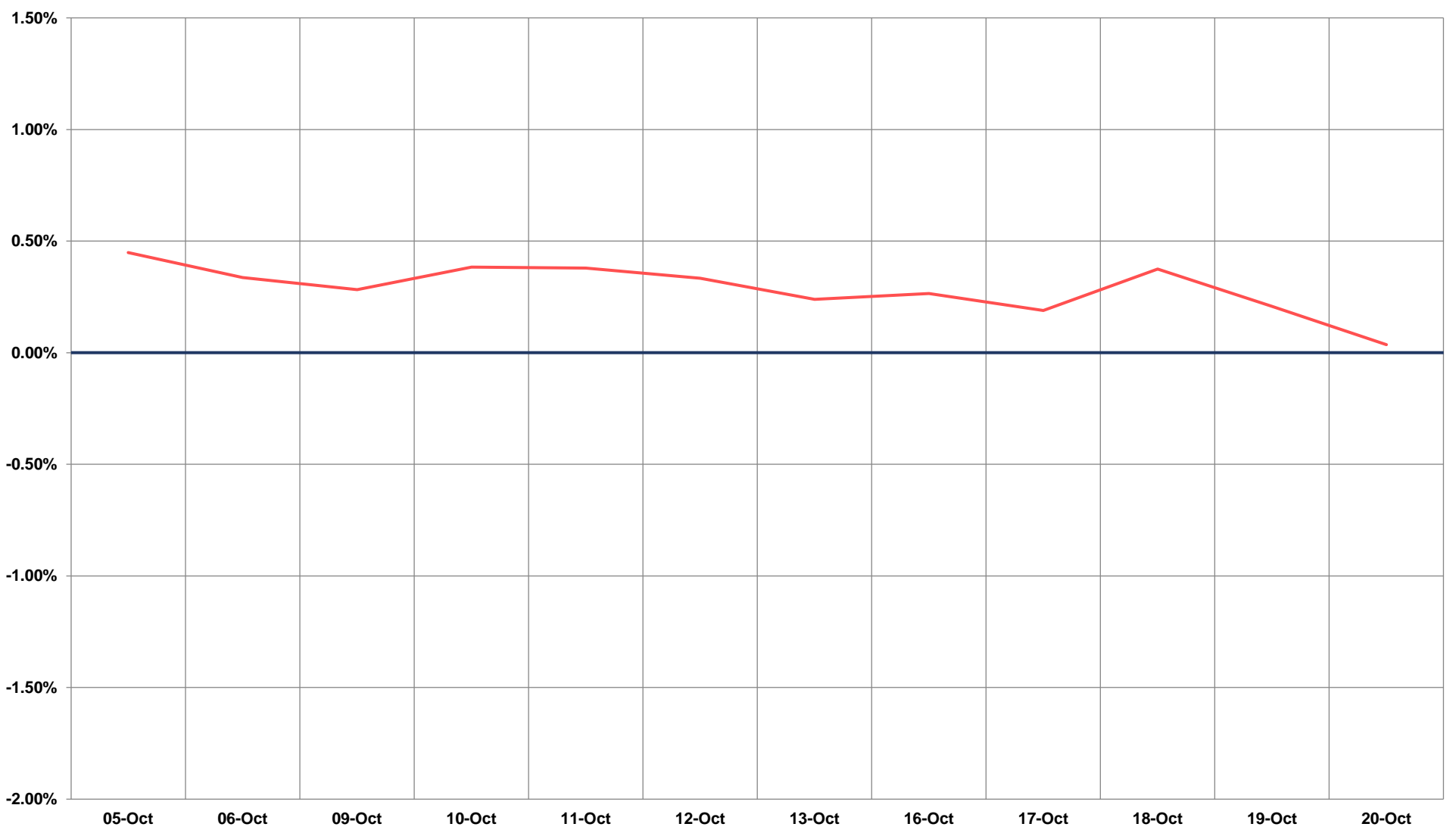
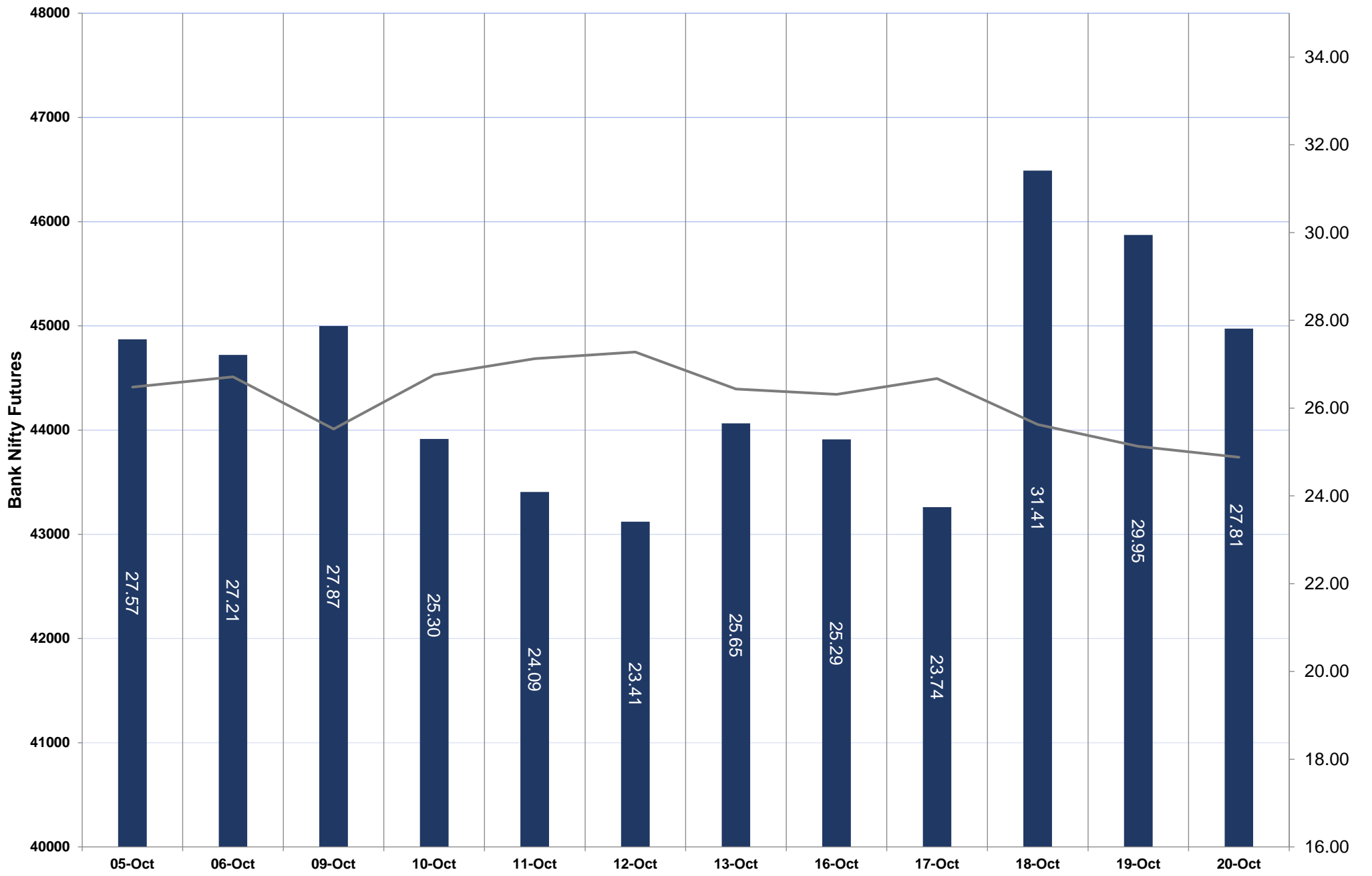
## NIFTY FUTURES



# TECHNICAL VIEWS



## BANK NIFTY FUTURES

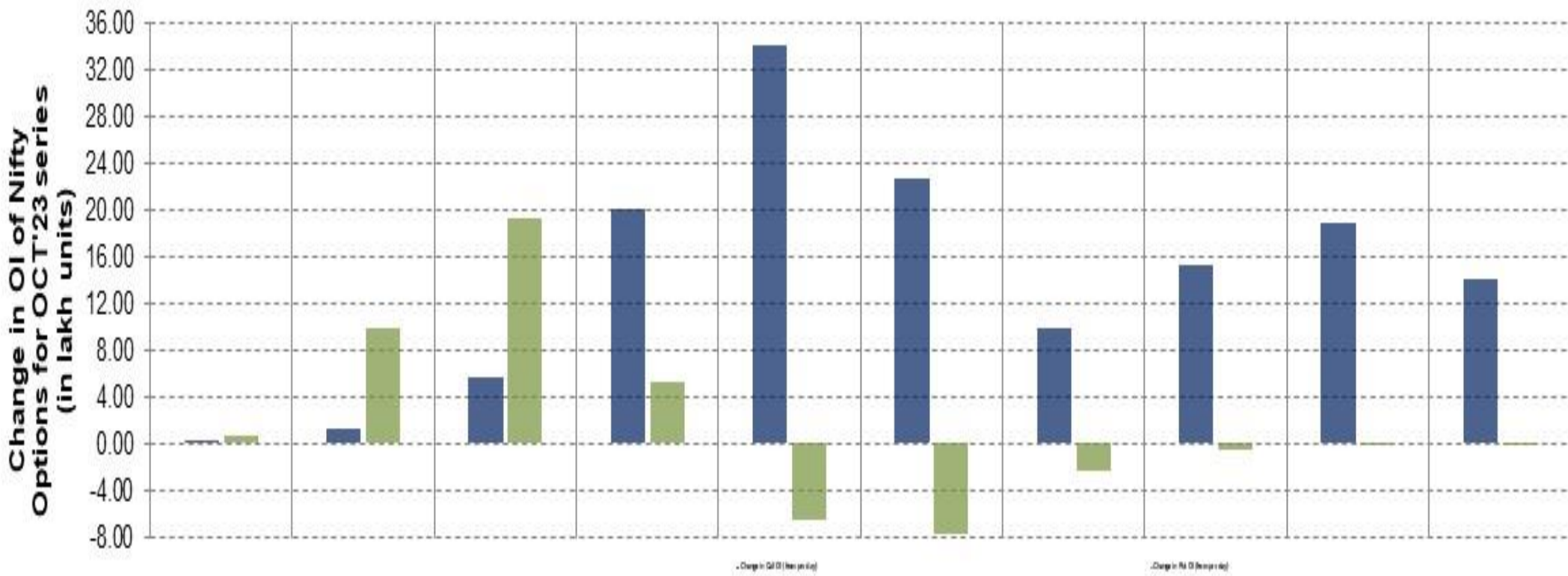
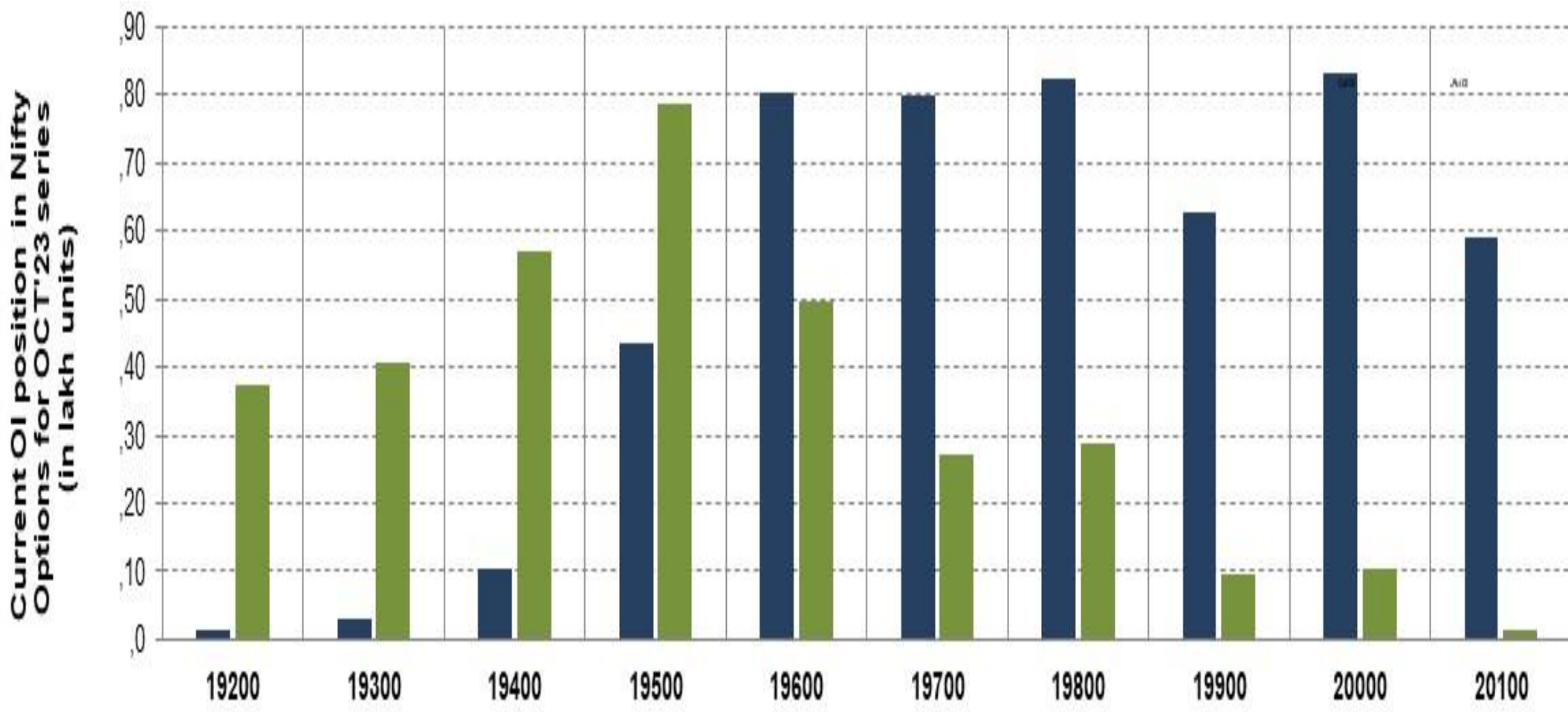




# TECHNICAL VIEWS



## NIFTY OPTIONS



- **Most Active Nifty Call** with an addition of 3.39 million in Open Interests is **Strike Price of 19600**
- **Most Active Nifty Put** with an addition of 1.91 millions in Open Interests is **Strike Price of 19400**
- **Maximum Open Interest** an outstanding was 8.32 millions for Calls at **Strike Price of 20000**
- **Maximum Open Interest** an outstanding was 7.85 millions for puts at **Strike Price of 19500**

# Disclaimer



The Information provided by SMS or in newsletter or in any document has been prepared by Shah Investor's Home Ltd (SIHL). The Information provided by SMS or in newsletter does not constitute an offer or solicitation for the purchase or sale of any financial instrument or as an official confirmation of any transaction. The information contained herein is from publicly available data or other sources believed to be reliable, but we do not represent that it is accurate or complete and it should not be relied on as such. SIHL or any of its affiliates/ group companies shall not be in any way responsible for any loss or damage that may arise to any person from any error in the information contained in this report or SMS. This Information provided by SMS, reports or in newsletter is provided for assistance only and is not intended to be and must not alone be taken as the basis for an investment decision. The user assumes the entire risk of any use made of this information. Each recipient of this Information provided by SMS, report or in newsletter should make such investigation as it deems necessary to arrive at an independent evaluation of an investment in the securities of companies referred to in this information provided by SMS, report or in newsletter (including the merits and risks involved), and should consult his own advisors to determine the merits and risks of such investment. The investment discussed or views expressed may not be suitable for all investors. This information is strictly confidential and is being furnished to you solely for your information.

The information should not be reproduced or redistributed or passed on directly or indirectly in any form to any other person or published, copied, in whole or in part, for any purpose. The information provided by report or SMS is not directed or intended for distribution to, or use by, any person or entity who is a citizen or resident of or located in any locality, state, country or other jurisdiction, where such distribution, publication, availability or use would be contrary to law, regulation or which would subject SIHL and affiliates/ group companies to any registration or licensing requirements within such jurisdiction. The distribution of this Information provided by SMS or in newsletter in certain jurisdictions may be restricted by law, and persons in whose possession this Information provided by SMS or in newsletter comes, should inform themselves about and observe, any such restrictions. The information given or Information provided by SMS, report or in newsletter is as of the date of the issue date of report or the date on which SMS provided and there can be no assurance that future results or events will be consistent with this information. This information is subject to change without any prior notice. SIHL reserves the right to make modifications and alterations to this statement as may be required from time to time. However, SIHL is under no obligation to update or keep the information current.

Nevertheless, SIHL is committed to providing independent and transparent recommendation to its client and would be happy to provide any information in response to specific client queries. Neither SIHL nor any of its affiliates, group companies, directors, employees, agents or representatives shall be liable for any damages whether direct, indirect, special or consequential including lost revenue or lost profits that may arise from or in connection with the use of the information. Past performance is not necessarily a guide to future performance. The disclosures of interest statements incorporated in the Information provided by SMS, report or in newsletter are provided solely to enhance the transparency and should not be treated as endorsement of the views expressed in the report. The analyst for this report certifies that all of the views expressed in this report accurately reflect his or her personal views about the subject company or companies and its or their securities, and no part of his or her compensation was, is or will be, directly or indirectly related to specific recommendations or views expressed in this report.