



# MORNING MANTRA



Daily Derivatives & Market Report

FEB 22, 2024



Buying interest in last leg of trade lifted the mood of Indian equity benchmarks and finished with gains of over half a percent on account of value buying. Most part of the day markets traded in red territory after US Fed's latest monetary minutes, where officials remain wary of cutting interest rates too quickly. The broader indices, the BSE Mid cap index and Small cap index ended in green. Barring banking stocks, all the sectoral indices on the BSE ended in green.

Markets made slightly positive start and soon turned negative as traders were cautious as a research report by CRISIL Market Intelligence and Analytics showed that financial conditions have tightened the economy with liquidity going into a deeper deficit putting upward pressure on short-term rates. Traders overlooked private survey showing that Indian business activity expanded at its fastest pace in seven months in February as demand remained strong for both manufacturing and services. HSBC's flash India Composite Purchasing Managers' Index (PMI), compiled by S&P Global, rose to 61.5 this month from January's final reading of 61.2, staying above the 50-mark that separates expansion from contraction for a 31st straight month. Markets continued to trade below neutral lines in afternoon session, as traders preferred to avoid the risk. However, markets managed to erase all their losses in late afternoon session. Traders took some support as Union Minister Ashwini Vaishnaw expressed confidence that India will continue to demonstrate a 6-8 per cent consistent growth rate over the next 10 years as he invited global players to the country to tap domestic and global markets. Finally, Nifty and Sensex settled above the psychological 22,200 and 73,100 levels respectively.

On the global front, European markets were trading mostly in green boosted by a rally in global stocks that also saw Japan's blue-chip Nikkei index hit an all-time high. Asian markets ended mostly in green as investors cheered Nvidia's strong Q4 earnings results, driven by demand for its chips to power artificial intelligence. Back home, Former NITI Aayog CEO Amitabh Kant has said that India needs to grow at 9-10 per cent to become \$35 trillion economy by 2047. He said 'India will be the third largest economy by 2027 and now that Japan, the United Kingdom and Germany are all in the recession phase, we should be able to do it much quicker and much faster'.

# MARKET SELFIE



## MARKET SUMMARY

Domestic Indices	Close	Points	% Change
SENSEX	73158.24	535.14	0.74
NIFTY	22217.45	162.40	0.74
MIDCAP	39834.45	362.98	0.92
SMLCAP	45789.81	247.92	0.54
BSEFMC	19622.91	184.57	0.95
AUTO	47426.83	861.89	1.85
POWER	6609.62	90.04	1.38
REALTY	7187.93	45.04	0.63
BSE IT	38685.69	695.35	1.83
BANKEX	53351.28	-22.20	-0.04
OIL GAS	28593.10	18.45	0.06
METAL	27486.80	358.27	1.32
INDIA VIX	15.20	-0.73	-4.58

## ADVANCE - DECLINE

Index	Advance	Decline	Unchanged
NSE	1606	971	45
BSE	2087	1727	119

## MARKET TURNOVER (₹ in Crs)

Segment	Current	Previous	Net %
BSE CASH	8143	8224	(1)
NSE CASH	101729	105936	(4)
NSE F&O	57589323	66580306	(14)

## KEY INDICES RATIOS

INDEX	P/E	P/B	Dividend Yield
NIFTY	22.94	3.89	1.22
SENSEX	25.01	3.71	1.11

# KEY NUMBERS TRACKER



## FII – DII ACTIVITY IN CASH SEGMENT (₹ in Crs)

FII-DII*	Buy	Sell	Net
DII	10473	8649	1824
FII	14377	15787	(1410)

Note: FPI & DII Figures are provisional

## FII ACTIVITY IN DERIVATIVES SEGMENT (₹ in Crs)

FII	Buy	Sell	Net
Index Futures	7287	5925	1362
Index Options	3650159	3652573	(2414)
Stock Futures	24973	26341	(1368)
Stock Options	50166	49227	940

## PUT-CALL RATIO

Index	Current	Previous
NIFTY	1.01	0.86
BANK NIFTY	0.92	1.07

## DOLLAR INDEX

Dollar Index	Current	Previous	% Change
DXY	103.69	103.97	-0.26

## 10-YEARS G-SEC YIELD

Country	Current	Previous	% Change
INDIA	7.068	7.045	0.33
USA	4.304	4.324	-0.46

## KEY COMMODITIES TRACKER (in \$)

Commodity	Current	Change Points	% Change
Gold	2029.56	3.78	0.19
Silver	23.06	0.16	0.72
Crude-Oil	78.30	0.39	0.50
Brent-Crude	83.44	0.41	0.49

# CURRENCY FUTURES & INDEX TRENDS TRACKER



## CURRENCY FUTURES

Expiry	Close	Change Points	% Change
27 FEB-24 USD-INR	82.85	-0.12	-0.14
27 FEB-24 EUR-INR	89.93	0.29	0.32
27 FEB-24 GBP-INR	105.01	0.34	0.32
27 FEB-24 JPY- INR	55.23	-0.15	-0.27

## INDICES – SUPPORT-RESISTANCE-PIVOT LEVELS

Index	Close	S2	S1	Pivot	R1	R2
NIFTY	22217	21738	21978	22115	22355	22492
SENSEX	73158	71657	72408	72832	73583	74007
NIFTY FUTURES	22243	21825	22034	22152	22361	22479
BANK NIFTY	46920	46193	46556	46790	47154	47387
CNX IT	38130	37109	37620	37906	38416	38703
CNX MIDCAP	49128	47844	48486	48838	49480	49832
CNX SMALLCAP	16114	15735	15925	16026	16215	16316
INDIA VIX	15.20	14.47	14.84	15.49	15.86	16.51

## INDEX TREND ANALYSIS

Index	Daily	Weekly	Monthly
NIFTY	Buy	Buy	Buy
SENSEX	Buy	Buy	Buy
NIFTY FUTURES	Buy	Buy	Buy
BANK NIFTY	Buy	Buy	Buy
CNX IT	Buy	Buy	Buy
CNX MIDCAP	Buy	Buy	Buy
CNX SMALLCAP	Buy	Buy	Buy
INDIA VIX	NEUTRAL	NEUTRAL	NEUTRAL

## SECURITIES BAN IN F&O TRADES FOR 23-02-2024

ABFRL, ASHOKLEY, BALRAMCHIN, BANDHANBNK, BIOCON, GMRINFRA, GNFC, HINDCOPPER, INDUSTOWER, NATIONALUM, PEL, PVRINOX, RBLBANK, SAIL, ZEEL

# TECHNICAL VIEWS



## NIFTY

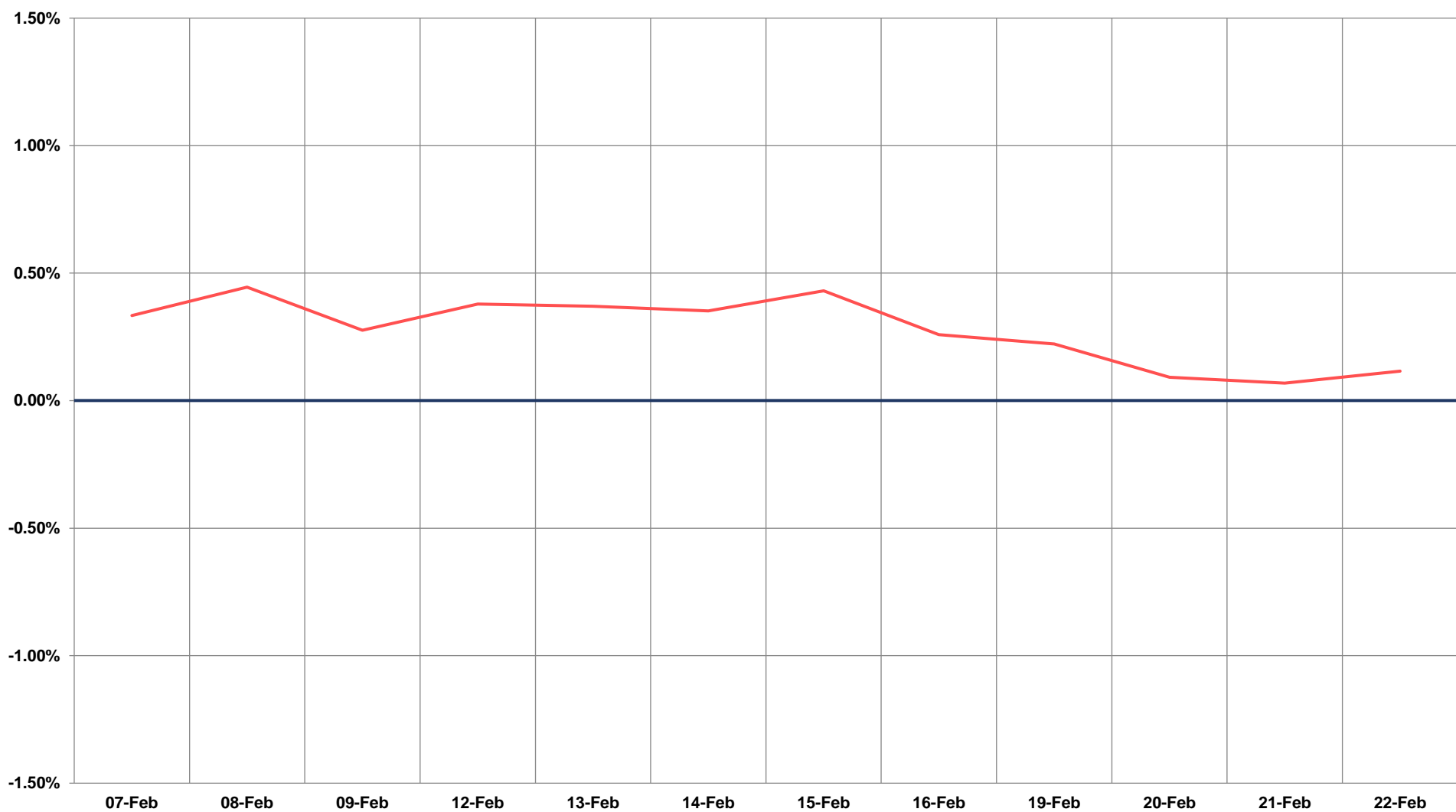
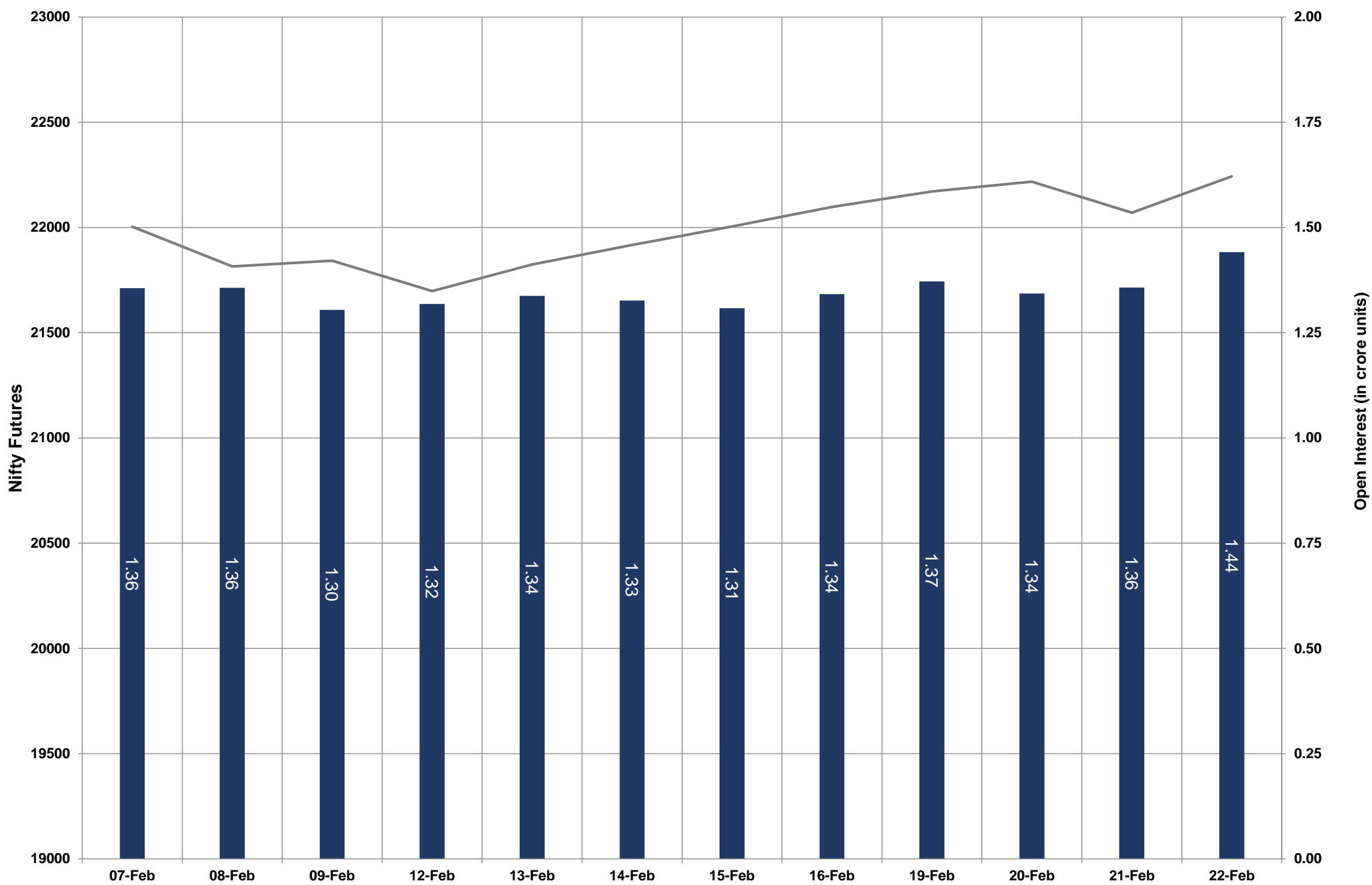


- Nifty Cash = **22217.45 (0.74%)**
- Resistance levels = **22350** and **22500**
- Support levels = **22000** and **21920**

# TECHNICAL VIEWS



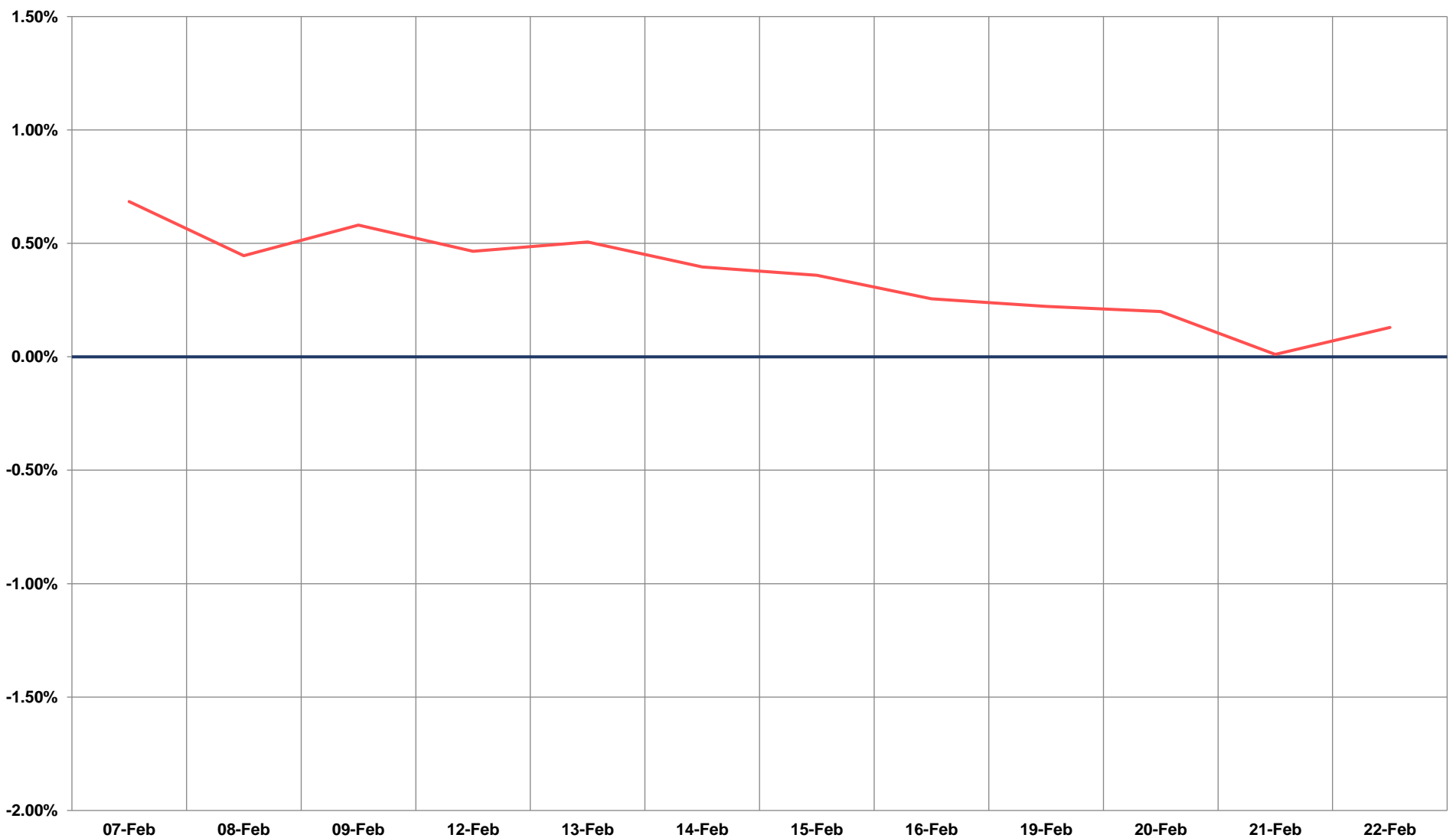
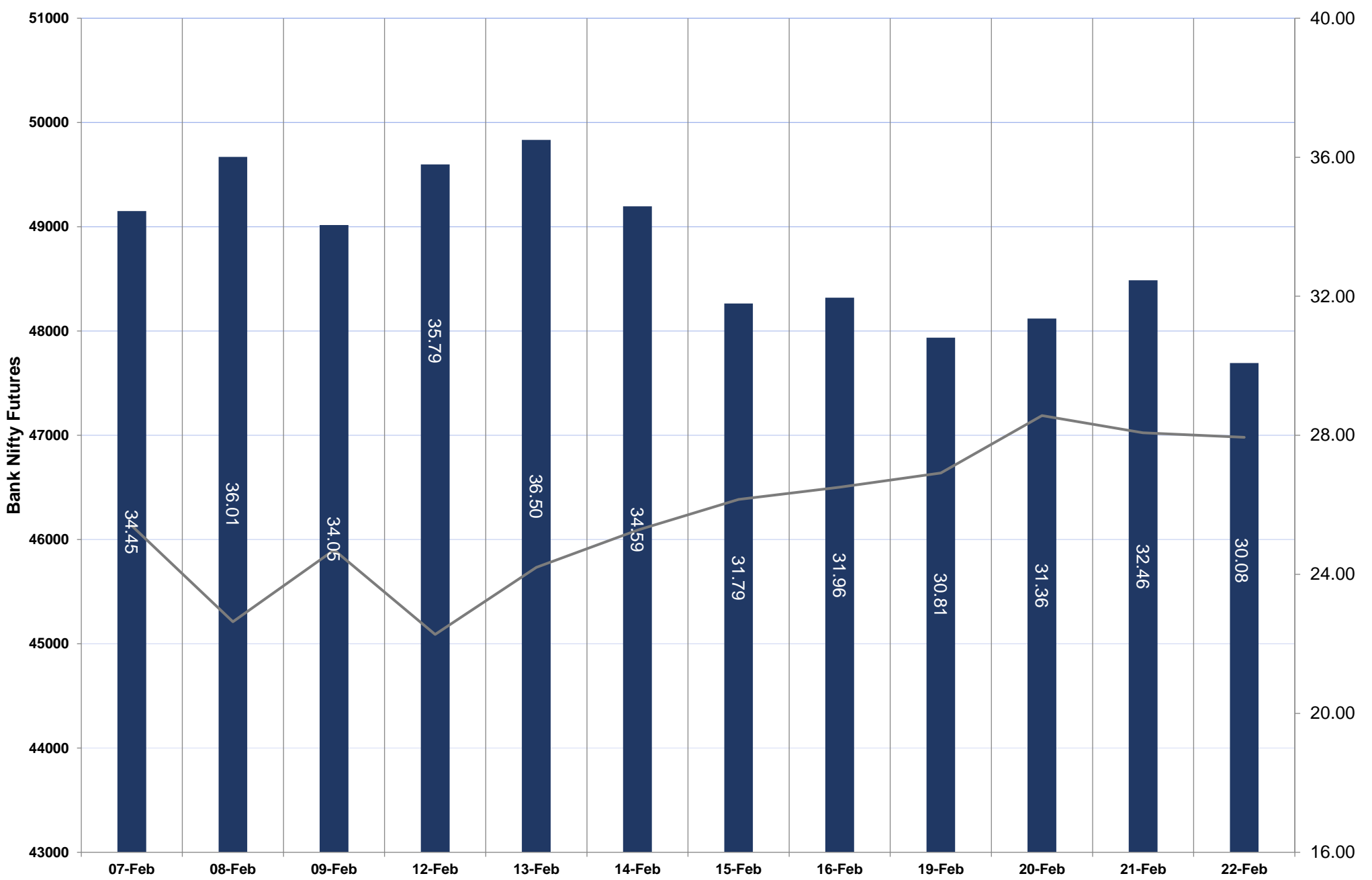
## NIFTY FUTURES



# TECHNICAL VIEWS



## BANK NIFTY FUTURES

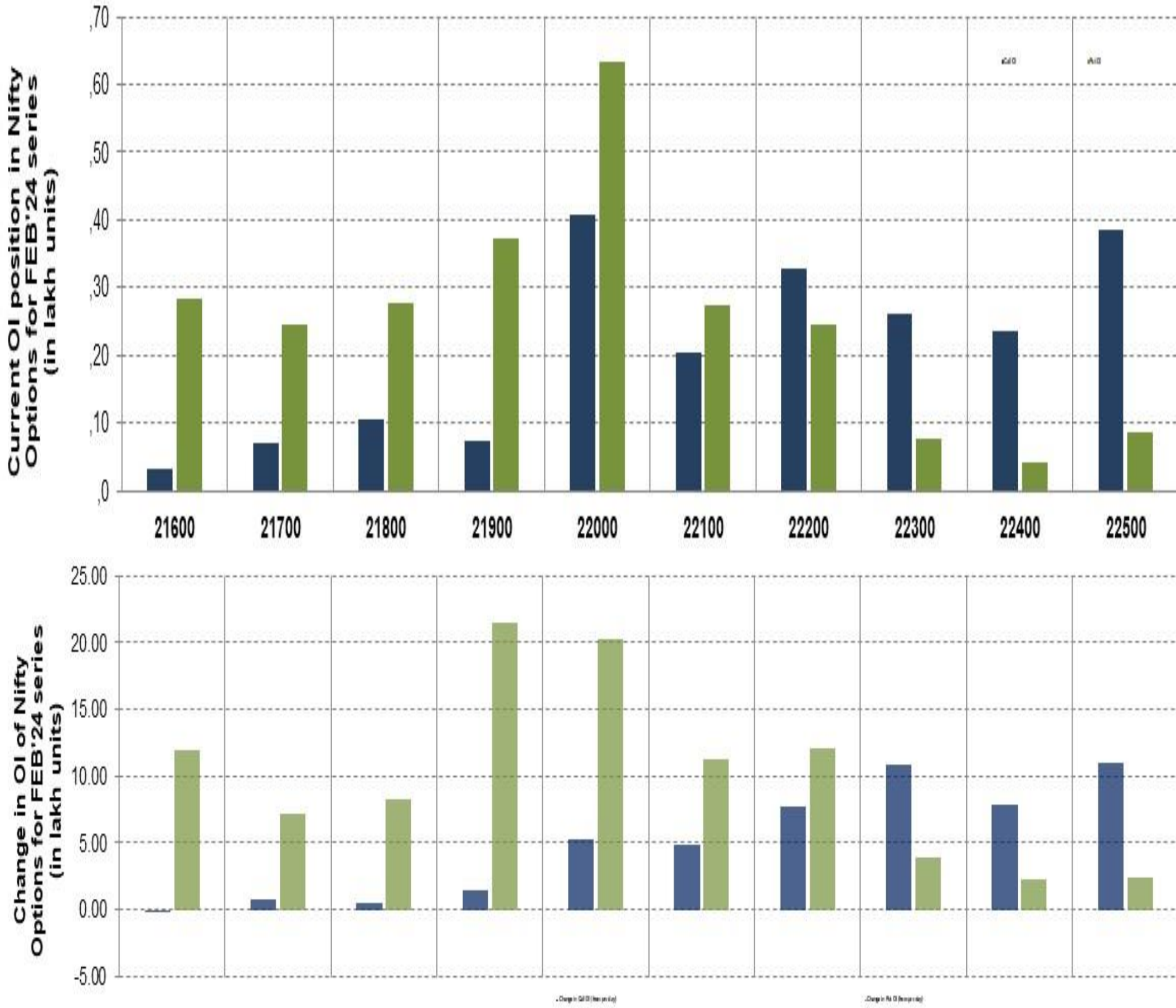




# TECHNICAL VIEWS



## NIFTY OPTIONS



- **Most Active Nifty Call** with an addition of 1.09 million in Open Interests is **Strike Price of 22500**
- **Most Active Nifty Put** with an addition of 2.14 millions in Open Interests is **Strike Price of 21900**
- **Maximum Open Interest an outstanding** was 4.08 millions for Calls at **Strike Price of 22000**
- **Maximum Open Interest an outstanding** was 6.33 millions for puts at **Strike Price of 22000**

# Disclaimer



The Information provided by SMS or in newsletter or in any document has been prepared by Shah Investor's Home Ltd (SIHL). The Information provided by SMS or in newsletter does not constitute an offer or solicitation for the purchase or sale of any financial instrument or as an official confirmation of any transaction. The information contained herein is from publicly available data or other sources believed to be reliable, but we do not represent that it is accurate or complete and it should not be relied on as such. SIHL or any of its affiliates/ group companies shall not be in any way responsible for any loss or damage that may arise to any person from any error in the information contained in this report or SMS. This Information provided by SMS, reports or in newsletter is provided for assistance only and is not intended to be and must not alone be taken as the basis for an investment decision. The user assumes the entire risk of any use made of this information. Each recipient of this Information provided by SMS, report or in newsletter should make such investigation as it deems necessary to arrive at an independent evaluation of an investment in the securities of companies referred to in this information provided by SMS, report or in newsletter (including the merits and risks involved), and should consult his own advisors to determine the merits and risks of such investment. The investment discussed or views expressed may not be suitable for all investors. This information is strictly confidential and is being furnished to you solely for your information.

The information should not be reproduced or redistributed or passed on directly or indirectly in any form to any other person or published, copied, in whole or in part, for any purpose. The information provided by report or SMS is not directed or intended for distribution to, or use by, any person or entity who is a citizen or resident of or located in any locality, state, country or other jurisdiction, where such distribution, publication, availability or use would be contrary to law, regulation or which would subject SIHL and affiliates/ group companies to any registration or licensing requirements within such jurisdiction. The distribution of this Information provided by SMS or in newsletter in certain jurisdictions may be restricted by law, and persons in whose possession this Information provided by SMS or in newsletter comes, should inform themselves about and observe, any such restrictions. The information given or Information provided by SMS, report or in newsletter is as of the date of the issue date of report or the date on which SMS provided and there can be no assurance that future results or events will be consistent with this information. This information is subject to change without any prior notice. SIHL reserves the right to make modifications and alterations to this statement as may be required from time to time. However, SIHL is under no obligation to update or keep the information current.

Nevertheless, SIHL is committed to providing independent and transparent recommendation to its client and would be happy to provide any information in response to specific client queries. Neither SIHL nor any of its affiliates, group companies, directors, employees, agents or representatives shall be liable for any damages whether direct, indirect, special or consequential including lost revenue or lost profits that may arise from or in connection with the use of the information. Past performance is not necessarily a guide to future performance. The disclosures of interest statements incorporated in the Information provided by SMS, report or in newsletter are provided solely to enhance the transparency and should not be treated as endorsement of the views expressed in the report. The analyst for this report certifies that all of the views expressed in this report accurately reflect his or her personal views about the subject company or companies and its or their securities, and no part of his or her compensation was, is or will be, directly or indirectly related to specific recommendations or views expressed in this report.