



MORNING MANTRA



Daily Derivatives & Market Report

APR 18, 2024



Selling pressure in last leg of trade forced Indian equity markets to end Thursday's trade with cut of around half a percent. Markets ended the session near day's low points amid profit booking by investors. Traders kept closed eye on Q4FY24 earnings. Markets failed to take support from Asian counterparts. As for broader indices, the BSE Mid cap index ended in red, while Small cap index ended in green. Energy and banking sector's stocks witnessed selling pressure.

Markets made slightly positive start and maintained their gains as traders took support after International Monetary Fund raised India's FY25 GDP growth forecast by 30 bps to 6.8 percent from its January forecast of 6.5 percent, citing bullish domestic demand conditions and a rising working-age population. With this, India continues to be the fastest growing economy of the world, ahead of China's growth projection of 4.6 percent during the same period. Investors ignored report that former Reserve Bank of India (RBI) Governor Raghuram Rajan expressed concerns regarding India's employment situation, despite the economy displaying signs of growth. He highlighted the necessity of tackling the scarcity of private sector jobs, noting the rising trend of individuals opting for government employment as a significant indicator. In afternoon session, indices widened their gains to touched high levels, as sentiments were improved with industry body PHDCCI stating that India's economy is estimated to grow at 8-8.3 per cent in the current fiscal. It added that the country's GDP will grow at an average of 6.7 per cent over the next 23 years to become a \$34.7 trillion economy by 2047, with a per capita income of \$21,000. Besides, UN Trade and Development (UNCTAD) in its report said that India grew by 6.7 per cent in 2023 and is expected to expand by 6.5 per cent in 2024, continuing to be the fastest-growing major economy in the world. However, in late afternoon session, markets erased all their gains and turned negative, as traders opted to book profit.

On the global front, European markets were trading mostly in green as investors kept a close eye on developments in the Middle East and awaited comments later today from Bank of England policymaker Megan Greene for further clues on when the central might lower interest rates. All Asian markets ended higher after Japan's tertiary activity index increased at a faster-than-expected pace in February. According to data from the Ministry of Economy, Trade, and Industry, the seasonally adjusted tertiary activity index rose 1.5 percent month-on-month in February, reversing a 0.5 percent decrease in January. Back home, the space sector stocks remained in focus, as the government amended the foreign direct investment (FDI) policy in the space sector, with an aim to attract offshore investors in satellite manufacturing and satellite launch vehicles segments.

MARKET SELFIE



MARKET SUMMARY

Domestic Indices	Close	Points	% Change
SENSEX	72488.99	-454.69	-0.62
NIFTY	21995.85	-152.05	-0.69
MIDCAP	40159.66	-155.70	-0.39
SMLCAP	45450.47	26.49	0.06
BSEFMC	19023.16	-192.07	-1.00
HEALTHCARE	34575.56	-430.75	-1.23
AUTO	48941.96	-358.45	-0.73
POWER	6929.32	-22.60	-0.33
REALTY	7336.58	-51.46	-0.70
BSE IT	34333.25	-66.96	-0.19
BANKEX	53178.34	-584.88	-1.09
OIL GAS	28281.36	-274.76	-0.96
METAL	29988.29	-149.20	-0.50
INDIA VIX	13.04	0.42	3.33

ADVANCE - DECLINE

Index	Advance	Decline	Unchanged
NSE	1382	1252	54
BSE	1863	1934	132

MARKET TURNOVER (₹ in Crs)

Segment	Current	Previous	Net %
BSE CASH	7395	6288	18
NSE CASH	118491	95412	24
NSE F&O	53289763	52633650	1

KEY INDICES RATIOS

INDEX	P/E	P/B	Dividend Yield
NIFTY	22.53	3.86	1.21
SENSEX	24.79	3.69	1.13

KEY NUMBERS TRACKER



FII – DII ACTIVITY IN CASH SEGMENT (₹ in Crs)

FII-DII*	Buy	Sell	Net
DII	14274	11988	2286
FII	18231	22492	(4260)

Note: FPI & DII Figures are provisional

FII ACTIVITY IN DERIVATIVES SEGMENT (₹ in Crs)

FII	Buy	Sell	Net
Index Futures	6224.90	13245.70	(7021)
Index Options	4162554.60	4132907.63	29647
Stock Futures	40680.86	45278.14	(4597)
Stock Options	80370.24	79826.87	543

PUT-CALL RATIO

Index	Current	Previous
NIFTY	0.87	0.78
BANK NIFTY	0.70	0.85

DOLLAR INDEX

Dollar Index	Current	Previous	% Change
DXY	105.88	105.91	-0.03

10-YEARS G-SEC YIELD

Country	Current	Previous	% Change
INDIA	7.186	7.193	-0.10
USA	4.590	4.584	0.17

KEY COMMODITIES TRACKER (in \$)

Commodity	Current	Change Points	% Change
Gold	2382.45	14.64	0.62
Silver	28.50	0.28	1.01
Crude-Oil	81.91	-0.78	-0.94
Brent-Crude	86.47	-0.82	-0.94

CURRENCY FUTURES & INDEX TRENDS TRACKER



CURRENCY FUTURES

Expiry	Close	Change Points	% Change
26 APR-24 USD-INR	83.54	-0.06	-0.07
26 APR-24 EUR-INR	89.20	0.24	0.27
26 APR-24 GBP-INR	104.26	0.11	0.10
26 APR-24 JPY- INR	54.09	-0.03	-0.05

INDICES – SUPPORT-RESISTANCE-PIVOT LEVELS

Index	Close	S2	S1	Pivot	R1	R2
NIFTY	21996	21730	21863	22095	22228	22459
SENSEX	72489	71669	72079	72776	73186	73883
NIFTY FUTURES	22055	21827	21941	22142	22256	22457
BANK NIFTY	47069	46446	46758	47294	47605	48141
CNX IT	33499	33025	33262	33682	33919	34339
CNX MIDCAP	48996	48369	48682	49207	49520	50045
CNX SMALLCAP	16286	16067	16177	16360	16470	16653
INDIA VIX	13.04	11.46	12.25	12.82	13.61	14.18

INDEX TREND ANALYSIS

Index	Daily	Weekly	Monthly
NIFTY	NEUTRAL	Buy	Buy
SENSEX	NEUTRAL	Buy	Buy
NIFTY FUTURES	NEUTRAL	Buy	Buy
BANK NIFTY	NEUTRAL	Buy	Buy
CNX IT	SELL	NEUTRAL	Buy
CNX MIDCAP	NEUTRAL	Buy	Buy
CNX SMALLCAP	NEUTRAL	Buy	Buy
INDIA VIX	NEUTRAL	NEUTRAL	NEUTRAL

SECURITIES BAN IN F&O TRADES FOR 19-04-2024

BALRAMCHIN, BANDHANBNK, EXIDEIND, GNFC, HINDCOPPER, IDEA, METROPOLIS, NATIONALUM, PEL, SAIL, ZEEL

TECHNICAL VIEWS



NIFTY

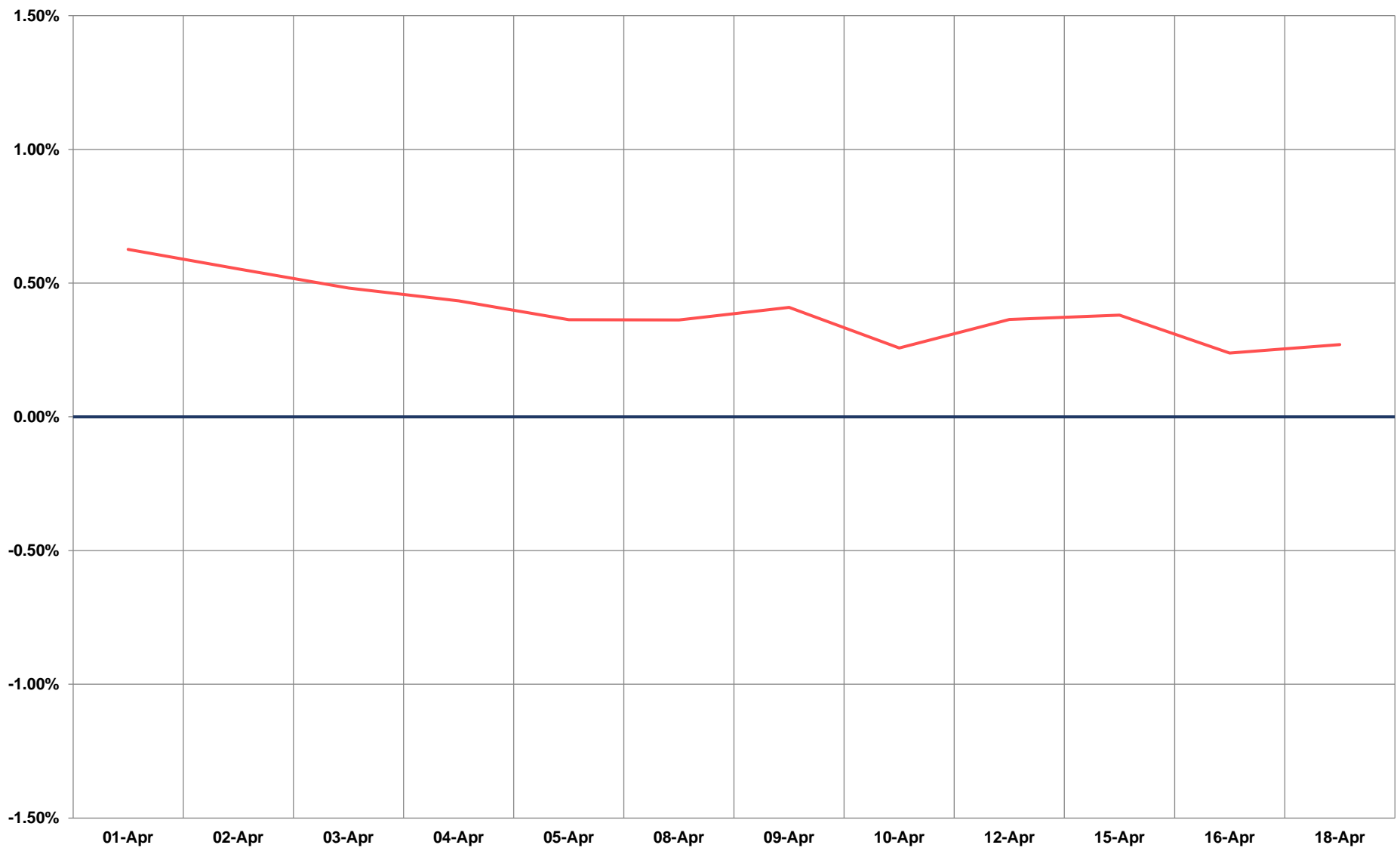
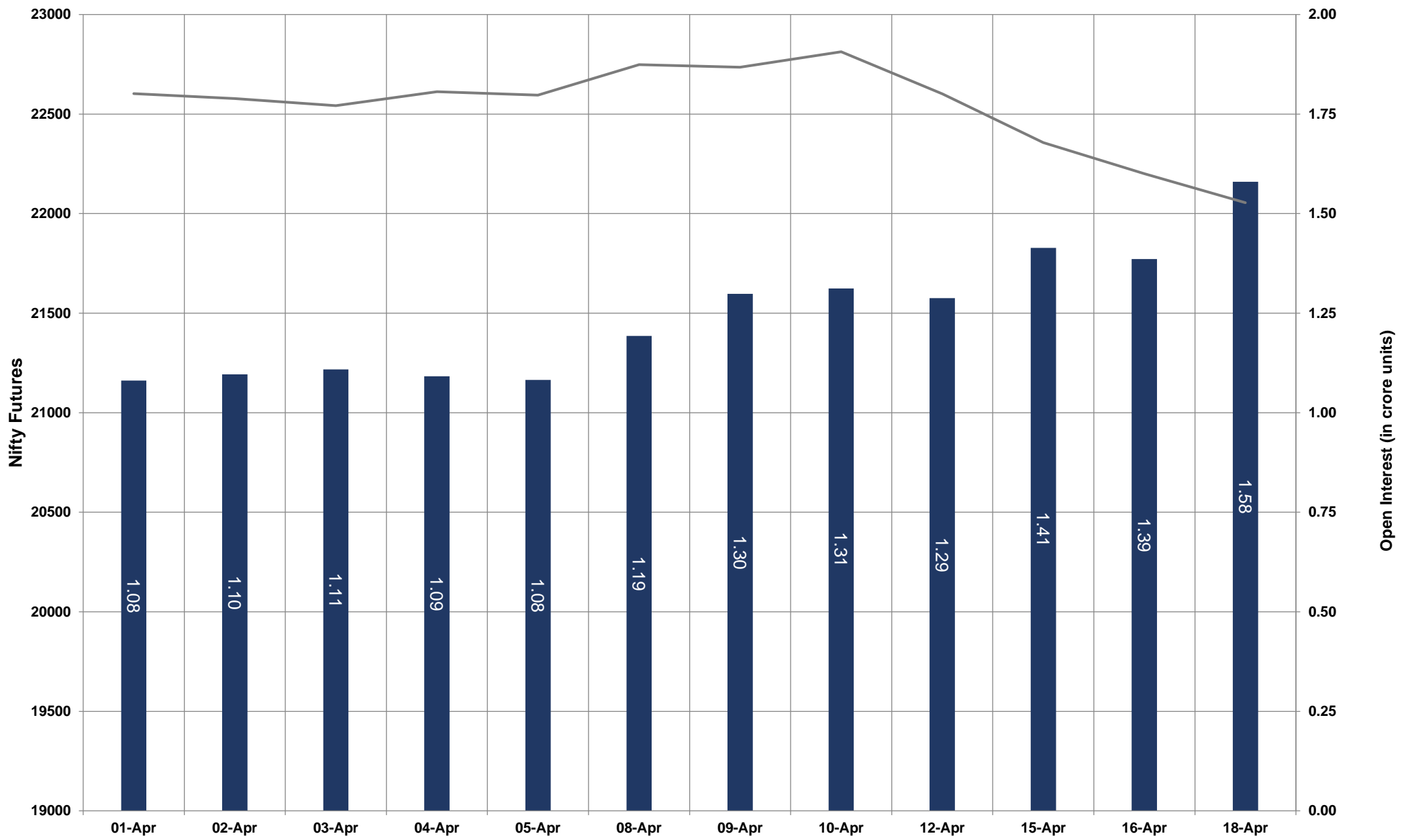


- Nifty Cash = **21995.85 (-0.69%)**
- Resistance levels = **22250** and **22430**
- Support levels = **21930** and **21820**

TECHNICAL VIEWS



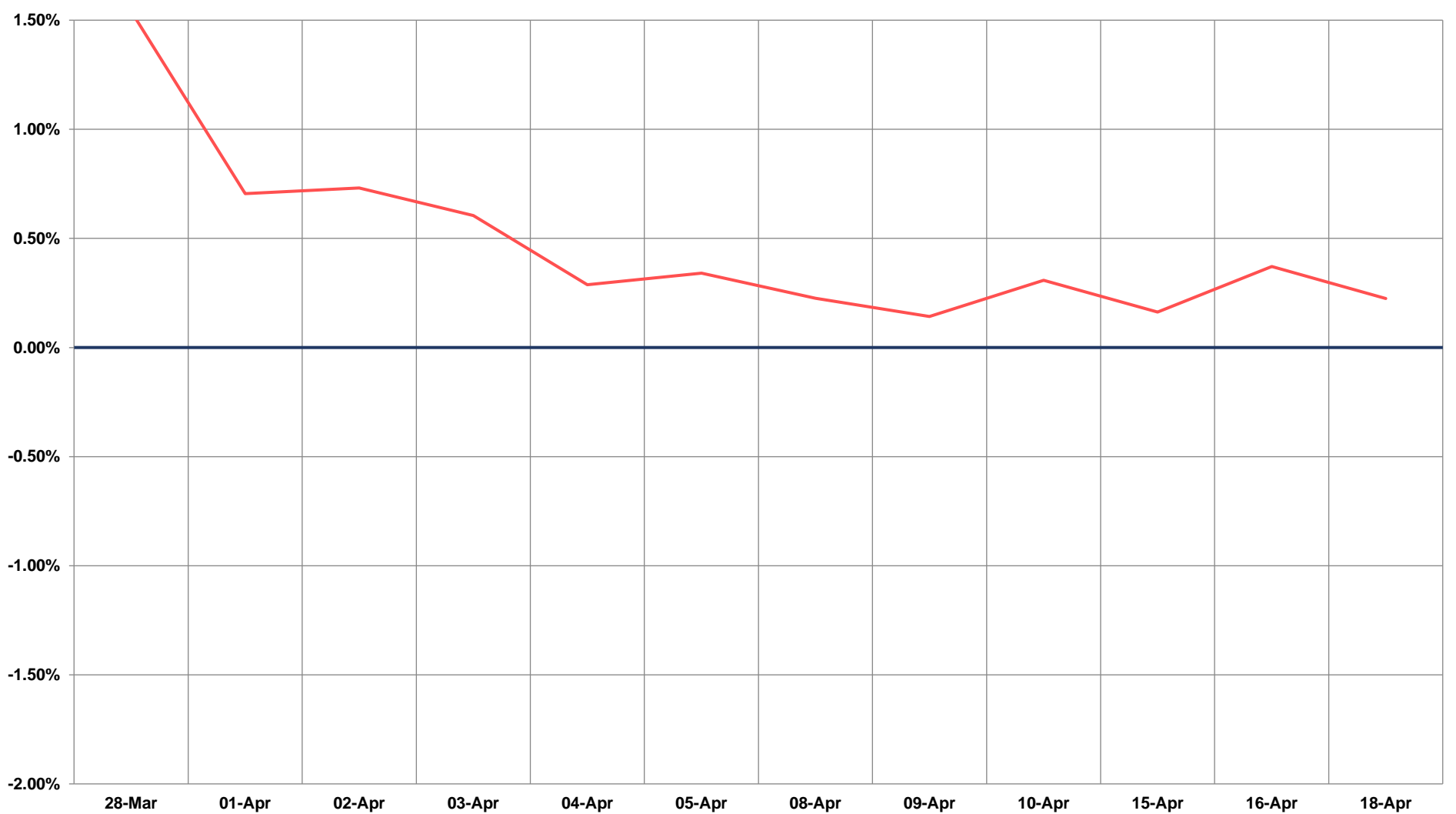
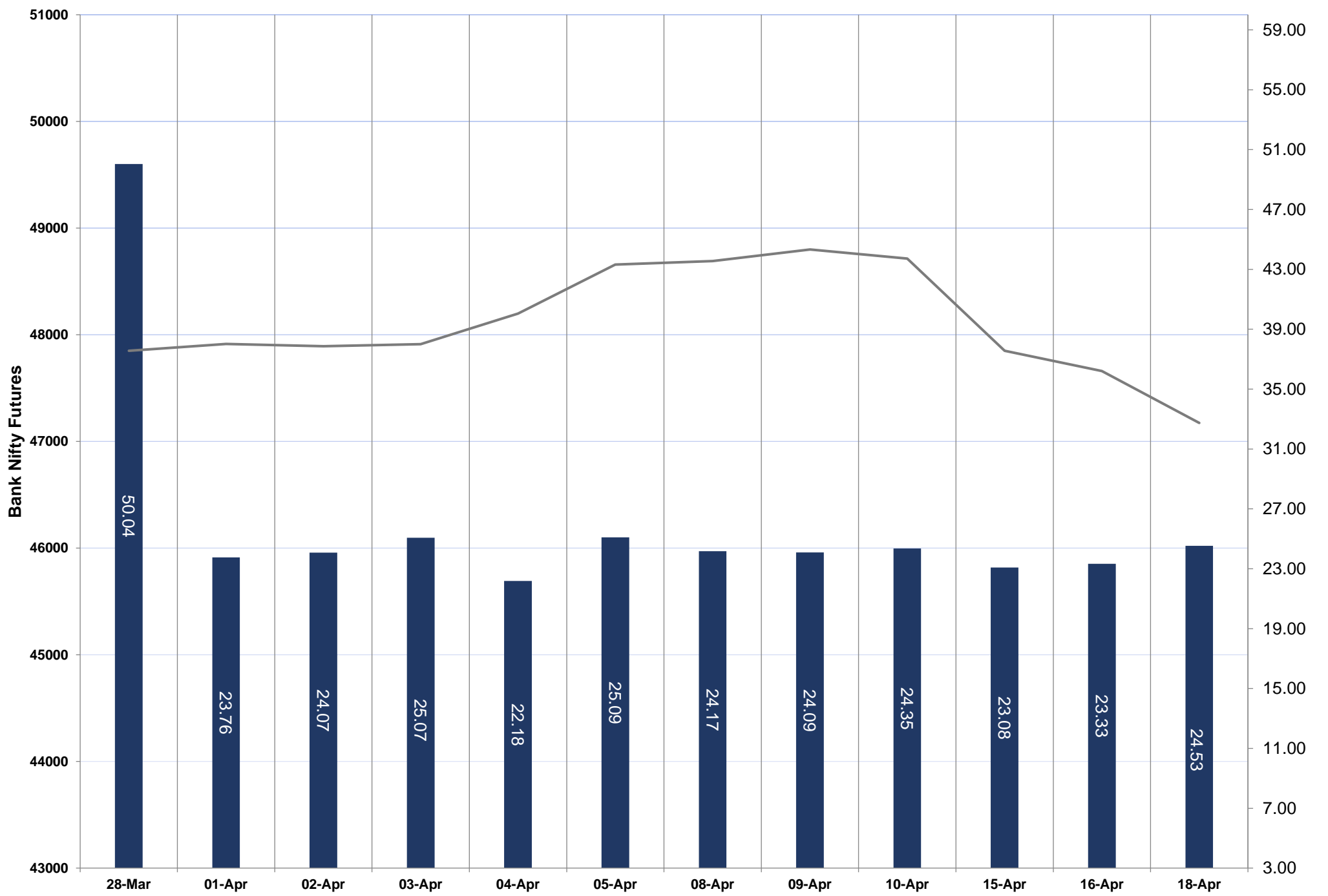
NIFTY FUTURES



TECHNICAL VIEWS



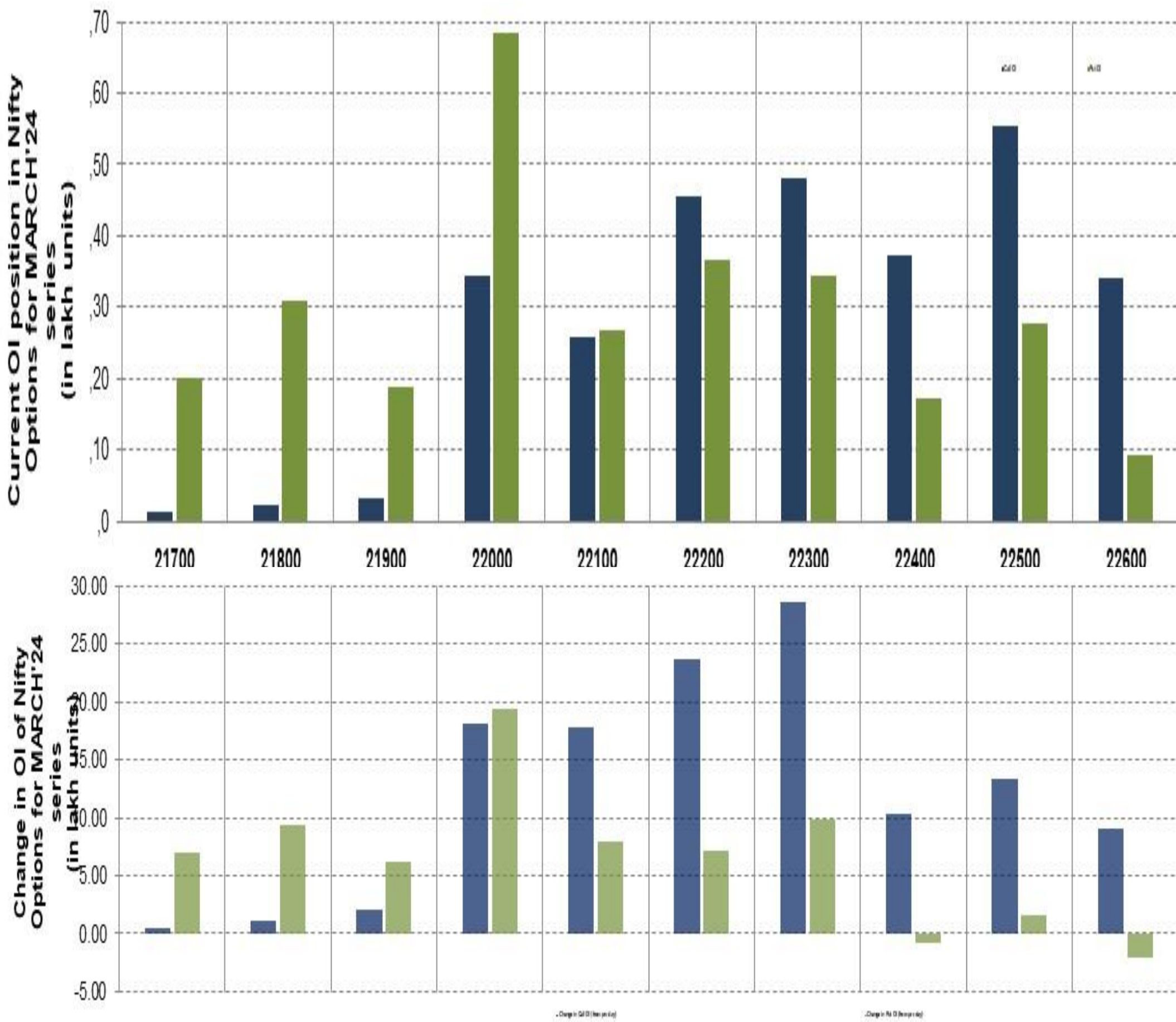
BANK NIFTY FUTURES



TECHNICAL VIEWS



NIFTY OPTIONS



- **Most Active Nifty Call** with an addition of 2.86 million in Open Interests is **Strike Price of 22300**
- **Most Active Nifty Put** with an addition of 1.93 millions in Open Interests is **Strike Price of 22000**
- **Maximum Open Interest** an outstanding was 5.52 millions for Calls at **Strike Price of 22500**
- **Maximum Open Interest** an outstanding was 6.84 millions for puts at **Strike Price of 22000**

Disclaimer



The Information provided by SMS or in newsletter or in any document has been prepared by Shah Investor's Home Ltd (SIHL). The Information provided by SMS or in newsletter does not constitute an offer or solicitation for the purchase or sale of any financial instrument or as an official confirmation of any transaction. The information contained herein is from publicly available data or other sources believed to be reliable, but we do not represent that it is accurate or complete and it should not be relied on as such. SIHL or any of its affiliates/ group companies shall not be in any way responsible for any loss or damage that may arise to any person from any error in the information contained in this report or SMS. This Information provided by SMS, reports or in newsletter is provided for assistance only and is not intended to be and must not alone be taken as the basis for an investment decision. The user assumes the entire risk of any use made of this information. Each recipient of this Information provided by SMS, report or in newsletter should make such investigation as it deems necessary to arrive at an independent evaluation of an investment in the securities of companies referred to in this information provided by SMS, report or in newsletter (including the merits and risks involved), and should consult his own advisors to determine the merits and risks of such investment. The investment discussed or views expressed may not be suitable for all investors. This information is strictly confidential and is being furnished to you solely for your information.

The information should not be reproduced or redistributed or passed on directly or indirectly in any form to any other person or published, copied, in whole or in part, for any purpose. The information provided by report or SMS is not directed or intended for distribution to, or use by, any person or entity who is a citizen or resident of or located in any locality, state, country or other jurisdiction, where such distribution, publication, availability or use would be contrary to law, regulation or which would subject SIHL and affiliates/ group companies to any registration or licensing requirements within such jurisdiction. The distribution of this Information provided by SMS or in newsletter in certain jurisdictions may be restricted by law, and persons in whose possession this Information provided by SMS or in newsletter comes, should inform themselves about and observe, any such restrictions. The information given or Information provided by SMS, report or in newsletter is as of the date of the issue date of report or the date on which SMS provided and there can be no assurance that future results or events will be consistent with this information. This information is subject to change without any prior notice. SIHL reserves the right to make modifications and alterations to this statement as may be required from time to time. However, SIHL is under no obligation to update or keep the information current.

Nevertheless, SIHL is committed to providing independent and transparent recommendation to its client and would be happy to provide any information in response to specific client queries. Neither SIHL nor any of its affiliates, group companies, directors, employees, agents or representatives shall be liable for any damages whether direct, indirect, special or consequential including lost revenue or lost profits that may arise from or in connection with the use of the information. Past performance is not necessarily a guide to future performance. The disclosures of interest statements incorporated in the Information provided by SMS, report or in newsletter are provided solely to enhance the transparency and should not be treated as endorsement of the views expressed in the report. The analyst for this report certifies that all of the views expressed in this report accurately reflect his or her personal views about the subject company or companies and its or their securities, and no part of his or her compensation was, is or will be, directly or indirectly related to specific recommendations or views expressed in this report.