



# MORNING MANTRA



Daily Derivatives & Market Report

MAY 03, 2024



After several exit polls pointed to a third term and sizable mandate for Prime Minister Narendra Modi, Indian equity markets hit record highs on Monday with Sensex and Nifty settling above the psychological 76,400 and 23,250 levels, respectively. Robust Indian GDP data for the fourth quarter of FY24 also boosted investor sentiment. There were no losing sectoral indices on the BSE. The broader indices, the BSE Mid cap index and Small cap index ended with hefty gains.

Markets made gap-up opening and remained higher, as traders took support after India's gross domestic product (GDP) grew 7.8 per cent y-o-y during the January-March 2024 quarter (Q4 FY24) as compared to 7 per cent growth recorded a year ago. For the full financial year 2023-24, India's GDP growth rate stood at 8.2 per cent as against 7 per cent in FY23. Some support came in as growth of eight core industries rose to 6.2% in April from 6% in March, mainly due to higher growth achieved in natural gas, refinery products, coal, steel and electricity sectors. In afternoon session, markets continued to trade near all-time high points, as investors continued to hunt for fundamentally strong stocks. Traders remain energized as the government data showed that India's goods and services tax (GST) collection in May rose 10 per cent year-on-year (Y-o-Y) to Rs 1.73 trillion, taking overall collection to Rs 3.83 trillion so far in the current financial year (FY25). Traders overlooked reports that India's manufacturing sector growth eased further in the month of May, signaling a slower but still substantial improvement in the health of the sector. The headline figure was nearly four points higher than its long-run average. According to the survey report, the seasonally adjusted HSBC India Manufacturing Purchasing Managers' Index (PMI) eased to 57.5 in May as against 58.8 in April. It was 59.1 in March. In late afternoon session, markets continued their gaining momentum and ended with gains of over three percent.

On the global front, European markets were trading higher extending last week's rally, as investors look ahead to the European Central Bank's latest interest rate decision later this week. Asian markets ended mostly in green as soft U.S. inflation data revived rate cut hopes and a private survey showed China's factory activity grew the fastest in about two years in May due to production gains and new orders.

# MARKET SELFIE



## MARKET SUMMARY

Domestic Indices	Close	Points	% Change
SENSEX	76468.78	2507.47	3.39
NIFTY	23263.90	733.20	3.25
MIDCAP	44367.67	1514.98	3.54
SMLCAP	48232.30	968.64	2.05
BSEFMC	19725.08	196.26	1.00
HEALTHCARE	34928.96	39.43	0.11
AUTO	54410.58	1384.58	2.61
POWER	8284.74	585.28	7.60
REALTY	8448.26	468.44	5.87
BSE IT	33305.98	107.27	0.32
BANKEX	58290.47	2518.75	4.52
OIL GAS	30765.44	2125.57	7.42
METAL	33741.36	1028.12	3.14
INDIA VIX	20.94	-3.66	-14.88

## ADVANCE - DECLINE

Index	Advance	Decline	Unchanged
NSE	1974	794	45
BSE	2341	1619	155

## MARKET TURNOVER (₹ in Crs)

Segment	Current	Previous	Net %
BSE CASH	13620	9727	40
NSE CASH	172540	228738	(25)
NSE F&O	19106881	5412796	253

## KEY INDICES RATIOS

INDEX	P/E	P/B	Dividend Yield
NIFTY	22.13	4.08	1.17
SENSEX	23.10	3.77	1.06

# KEY NUMBERS TRACKER



## FII – DII ACTIVITY IN CASH SEGMENT (₹ in Crs)

FII-DII*	Buy	Sell	Net
DII	22651	20737	1914
FII	23451	16601	6851

Note: FPI & DII Figures are provisional

## FII ACTIVITY IN DERIVATIVES SEGMENT (₹ in Crs)

FII	Buy	Sell	Net
Index Futures	14941.85	7136.20	7806
Index Options	1134663.77	1140017.27	(5354)
Stock Futures	49000.81	43032.77	5968
Stock Options	54765.55	55530.02	(764)

## PUT-CALL RATIO

Index	Current	Previous
NIFTY	1.05	1.00
BANK NIFTY	0.77	0.83

## DOLLAR INDEX

Dollar Index	Current	Previous	% Change
DXY	104.76	104.59	0.16

## 10-YEARS G-SEC YIELD

Country	Current	Previous	% Change
INDIA	6.945	6.986	-0.59
USA	4.465	4.516	-1.18

## KEY COMMODITIES TRACKER (in \$)

Commodity	Current	Change Points	% Change
Gold	2327.78	3.02	0.13
Silver	30.32	-0.07	-0.25
Crude-Oil	76.79	-0.20	-0.26
Brent-Crude	80.96	-0.15	-0.18



# CURRENCY FUTURES & INDEX TRENDS TRACKER



## CURRENCY FUTURES

Expiry	Close	Change Points	% Change
26 JUNE-24 USD-INR	83.15	-0.35	-0.42
26 JUNE-24 EUR-INR	90.27	-0.29	-0.32
26 JUNE-24 GBP-INR	105.73	-0.36	-0.33
26 JUNE-24 JPY- INR	53.38	0.01	0.02

## INDICES – SUPPORT-RESISTANCE-PIVOT LEVELS

Index	Close	S2	S1	Pivot	R1	R2
NIFTY	23264	22945	23105	23222	23381	23498
SENSEX	76469	75235	75852	76295	76912	77356
NIFTY FUTURES	23408	22788	23098	23471	23781	24154
BANK NIFTY	50980	49695	50337	50735	51378	51776
CNX IT	32511	32016	32264	32704	32951	33391
CNX MIDCAP	53353	52415	52884	53295	53764	54174
CNX SMALLCAP	17099	16759	16929	17176	17346	17594
INDIA VIX	20.94	16.06	18.50	21.55	23.99	27.04

## INDEX TREND ANALYSIS

Index	Daily	Weekly	Monthly
NIFTY	Buy	NEUTRAL	Buy
SENSEX	Buy	NEUTRAL	Buy
NIFTY FUTURES	Buy	NEUTRAL	Buy
BANK NIFTY	Buy	Buy	Buy
CNX IT	SELL	SELL	NEUTRAL
CNX MIDCAP	Buy	Buy	Buy
CNX SMALLCAP	Buy	NEUTRAL	Buy
INDIA VIX	NEUTRAL	Buy	NEUTRAL

## SECURITIES BAN IN F&O TRADES FOR 04-06-2024

ZEEL

# TECHNICAL VIEWS



## NIFTY

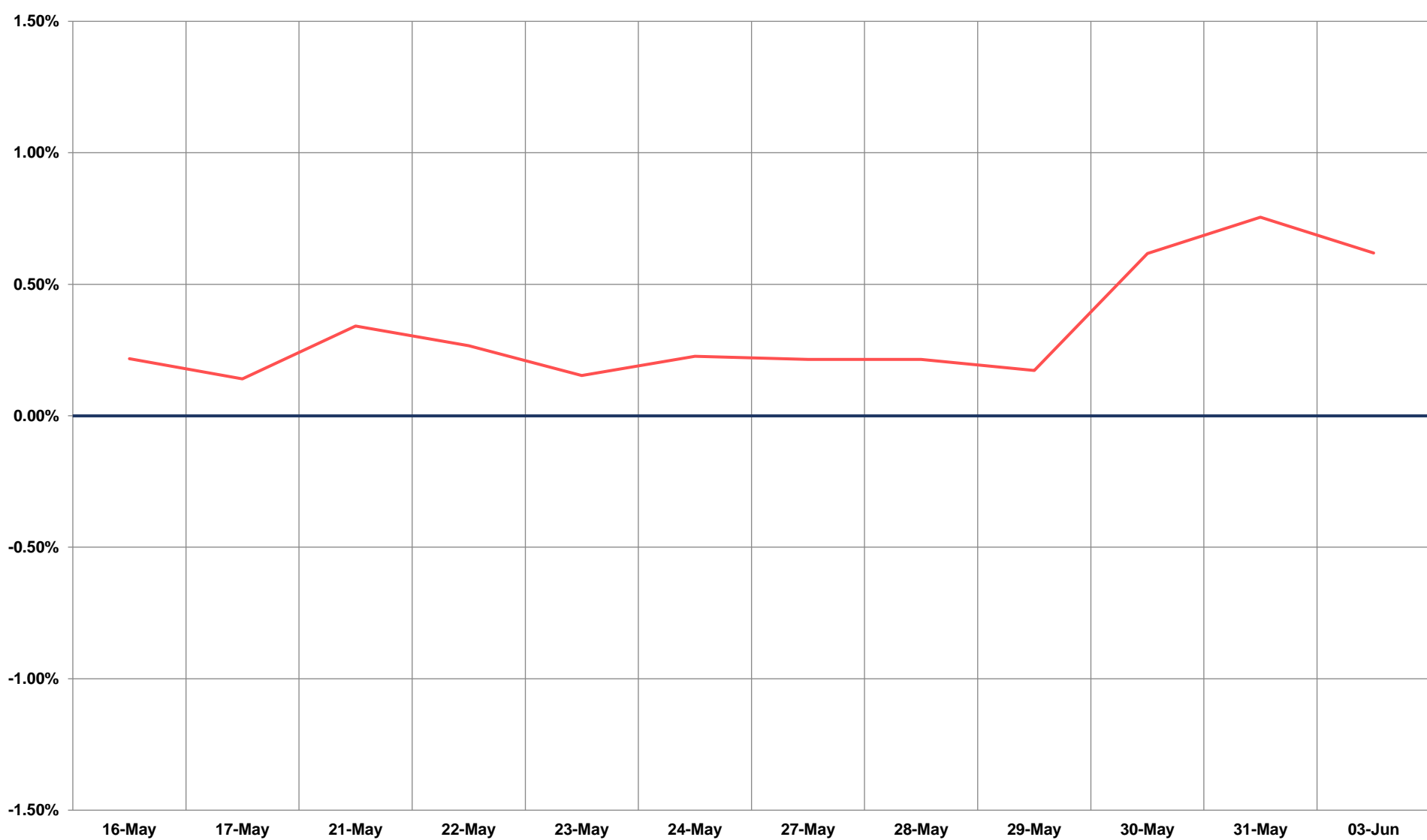
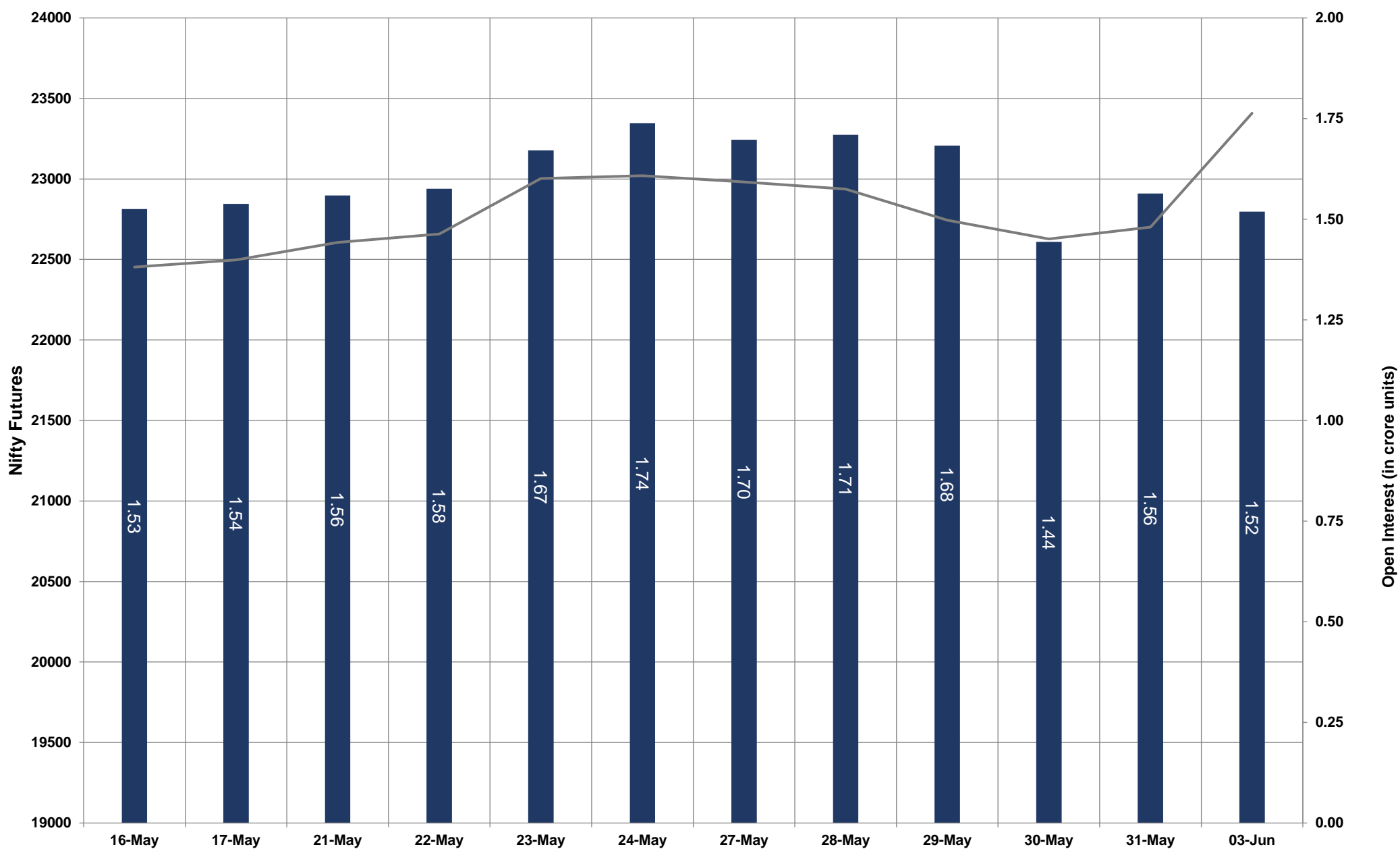


- Nifty Cash = **23263.90 (3.25%)**
- Resistance levels = **23550** and **23700**
- Support levels = **23000** and **22800**

# TECHNICAL VIEWS



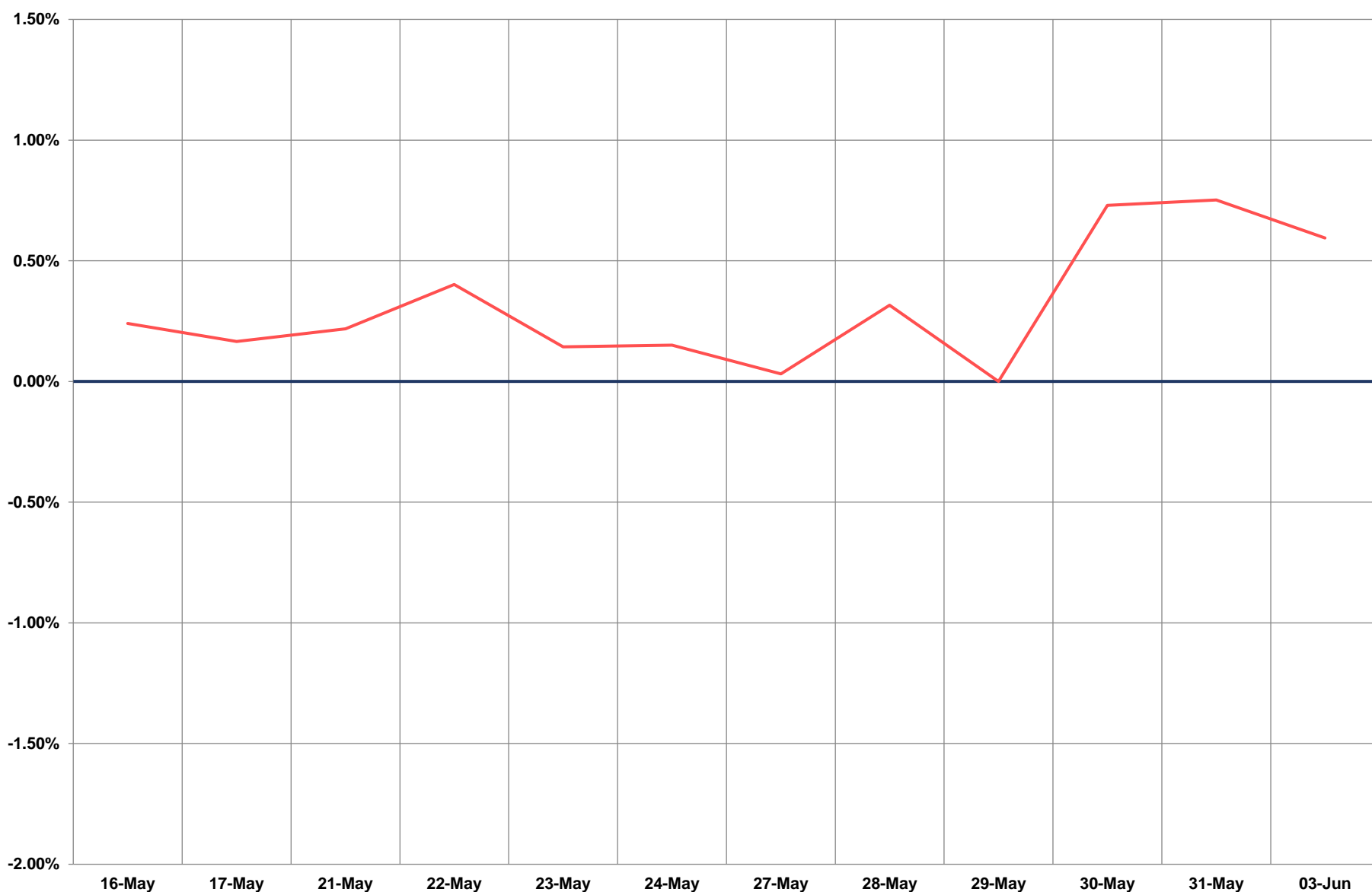
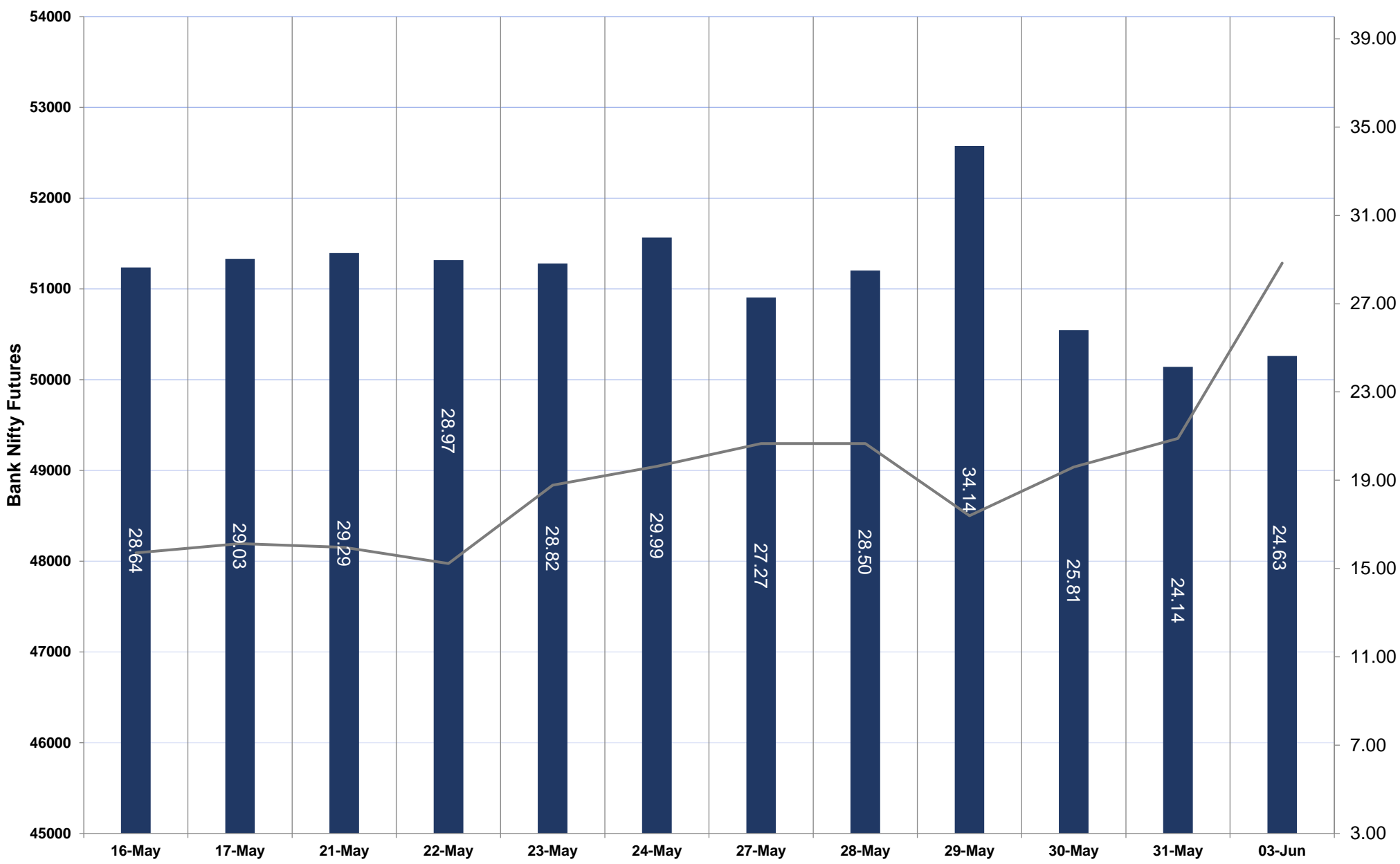
## NIFTY FUTURES



# TECHNICAL VIEWS



## BANK NIFTY FUTURES

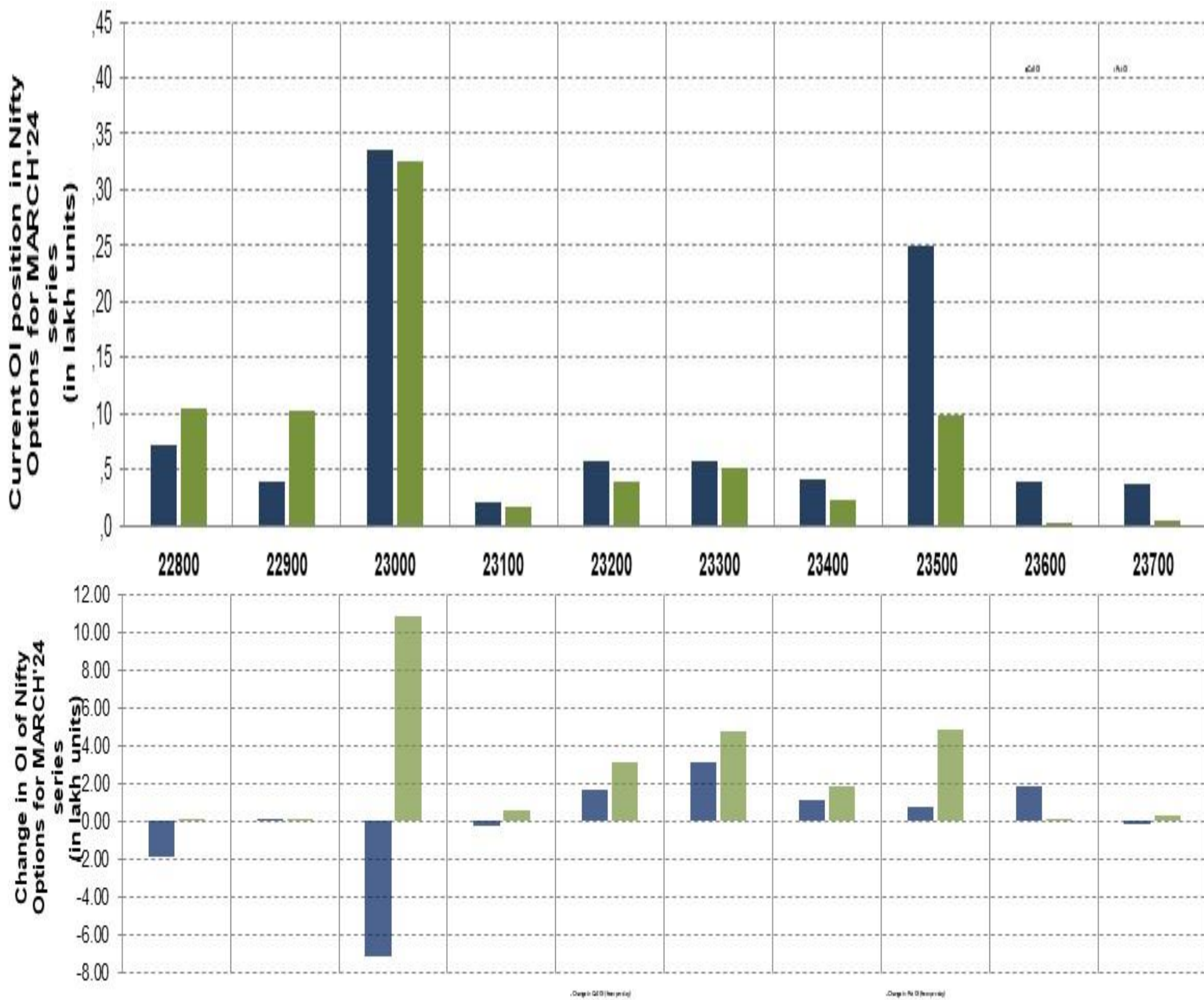




# TECHNICAL VIEWS



## NIFTY OPTIONS



- **Most Active Nifty Call** with an addition of 0.31 million in Open Interests is **Strike Price of 23300**
- **Most Active Nifty Put** with an addition of 1.08 millions in Open Interests is **Strike Price of 23000**
- **Maximum Open Interest an outstanding** was 3.36 millions for Calls at **Strike Price of 23000**
- **Maximum Open Interest an outstanding** was 3.25 millions for puts at **Strike Price of 23000**

# Disclaimer



The Information provided by SMS or in newsletter or in any document has been prepared by Shah Investor's Home Ltd (SIHL). The Information provided by SMS or in newsletter does not constitute an offer or solicitation for the purchase or sale of any financial instrument or as an official confirmation of any transaction. The information contained herein is from publicly available data or other sources believed to be reliable, but we do not represent that it is accurate or complete and it should not be relied on as such. SIHL or any of its affiliates/ group companies shall not be in any way responsible for any loss or damage that may arise to any person from any error in the information contained in this report or SMS. This Information provided by SMS, reports or in newsletter is provided for assistance only and is not intended to be and must not alone be taken as the basis for an investment decision. The user assumes the entire risk of any use made of this information. Each recipient of this Information provided by SMS, report or in newsletter should make such investigation as it deems necessary to arrive at an independent evaluation of an investment in the securities of companies referred to in this information provided by SMS, report or in newsletter (including the merits and risks involved), and should consult his own advisors to determine the merits and risks of such investment. The investment discussed or views expressed may not be suitable for all investors. This information is strictly confidential and is being furnished to you solely for your information.

The information should not be reproduced or redistributed or passed on directly or indirectly in any form to any other person or published, copied, in whole or in part, for any purpose. The information provided by report or SMS is not directed or intended for distribution to, or use by, any person or entity who is a citizen or resident of or located in any locality, state, country or other jurisdiction, where such distribution, publication, availability or use would be contrary to law, regulation or which would subject SIHL and affiliates/ group companies to any registration or licensing requirements within such jurisdiction. The distribution of this Information provided by SMS or in newsletter in certain jurisdictions may be restricted by law, and persons in whose possession this Information provided by SMS or in newsletter comes, should inform themselves about and observe, any such restrictions. The information given or Information provided by SMS, report or in newsletter is as of the date of the issue date of report or the date on which SMS provided and there can be no assurance that future results or events will be consistent with this information. This information is subject to change without any prior notice. SIHL reserves the right to make modifications and alterations to this statement as may be required from time to time. However, SIHL is under no obligation to update or keep the information current.

Nevertheless, SIHL is committed to providing independent and transparent recommendation to its client and would be happy to provide any information in response to specific client queries. Neither SIHL nor any of its affiliates, group companies, directors, employees, agents or representatives shall be liable for any damages whether direct, indirect, special or consequential including lost revenue or lost profits that may arise from or in connection with the use of the information. Past performance is not necessarily a guide to future performance. The disclosures of interest statements incorporated in the Information provided by SMS, report or in newsletter are provided solely to enhance the transparency and should not be treated as endorsement of the views expressed in the report. The analyst for this report certifies that all of the views expressed in this report accurately reflect his or her personal views about the subject company or companies and its or their securities, and no part of his or her compensation was, is or will be, directly or indirectly related to specific recommendations or views expressed in this report.