



MORNING MANTRA



Daily Derivatives & Market Report

NOV 05, 2024



Indian equity markets witnessed recovery during late afternoon session and closed the Tuesday's trade with gains of over half a percent led by gains in Metal and banking sectors' stocks. Traders turned their focus towards Tuesday's US election result. In first half of the session, indices traded just below their neutral lines amid continued foreign fund outflows. The broader indices, the BSE Mid cap index and Small cap index ended in green.

After making cautious start, markets traded in red tracking overnight losses on Wall Street along with mixed cues from Asian counterparts. Besides, Foreign Institutional Investors (FIIs) offloaded equities worth Rs 4,329.79 crore on Monday, according to exchange data. Traders took a note of report that corporate affairs ministry underscored the need for a 'continuous refinement' in the Insolvency and Bankruptcy Code (IBC) to address future challenges in corporate recast effectively. In afternoon session, indices remained lower. Traders were cautious amid reports that the central board of direct taxes (CBDT) has set monetary limitations for waiver or Reduction of Interest on Tax Payments with riders. However, in late afternoon session, indices wiped out all their losses and turned positive. Traders took note of private report that Finance Minister Nirmala Sitharaman chaired a meeting on November 4 to conduct a comprehensive review of the Income Tax Act 1961, in line with the announcement made during the last Union Budget. Finally, Nifty and Sensex settled above the psychological 24,200 and 79,400 levels, respectively.

On the global front, European markets were trading higher as traders' focus turned to Tuesday's US election and a Federal Reserve interest-rate decision looming later in the week. Asian markets ended mostly in green as Fed is widely expected to lower interest rates by another 25 basis points, but traders will be looking to the accompanying statement for clues about the likelihood of future rate cuts. Back home, Ministry of New and Renewable Energy (MNRE) has said that subsidies to the oil & gas sector saw a reduction of 85 per cent from a peak of \$25 billion in 2013 to \$3.5 billion by 2023. Since 2010, India has steadily reformed its fossil fuel subsidies, adopting a 'remove, target, and shift' approach.

MARKET SELFIE



MARKET SUMMARY

Domestic Indices	Close	Points	% Change
SENSEX	79476.64	694.40	0.88
NIFTY	24213.30	217.95	0.91
MIDCAP	45896.99	217.10	0.48
SMLCAP	54930.82	225.80	0.41
BSEFMC	21465.96	-37.57	-0.17
HEALTHCARE	43929.26	75.46	0.17
AUTO	54066.47	432.35	0.81
POWER	7750.15	16.25	0.21
REALTY	7695.08	52.00	0.68
BSE IT	40448.18	-18.59	-0.05
BANKEX	59521.43	1218.58	2.09
OIL GAS	27297.59	292.88	1.08
METAL	31703.38	737.50	2.38
INDIA VIX	16.12	-0.57	-3.42

ADVANCE - DECLINE

Index	Advance	Decline	Unchanged
NSE	1971	869	39
BSE	2478	1471	109

MARKET TURNOVER (₹ in Crs)

Segment	Current	Previous	Net %
BSE CASH	5948	6144	(3)
NSE CASH	99908	98155	2
NSE F&O	46142367	19469235	137

KEY INDICES RATIOS

INDEX	P/E	P/B	Dividend Yield
NIFTY	22.55	3.63	1.27
SENSEX	23.06	4.02	1.14

KEY NUMBERS TRACKER



FII – DII ACTIVITY IN CASH SEGMENT (₹ in Crs)

FII-DII*	Buy	Sell	Net
DII	12617	9586	3031
FII	11851	14421	(2569)

Note: FPI & DII Figures are provisional

FII ACTIVITY IN DERIVATIVES SEGMENT (₹ in Crs)

FII	Buy	Sell	Net
Index Futures	4542.24	3729.93	812
Index Options	3635226.77	3593261.15	41966
Stock Futures	29801.87	26970.77	2831
Stock Options	47509.53	48323.26	(814)

PUT-CALL RATIO

Index	Current	Previous
NIFTY	0.95	0.85
BANK NIFTY	1.05	0.71

DOLLAR INDEX

Dollar Index	Current	Previous	% Change
DXY	103.75	103.88	-0.12

10-YEARS G-SEC YIELD

Country	Current	Previous	% Change
INDIA	6.793	6.797	-0.06
USA	4.316	4.310	0.14

KEY COMMODITIES TRACKER (in \$)

Commodity	Current	Change Points	% Change
Gold	2737.20	1.20	0.04
Silver	32.57	0.18	0.56
Crude-Oil	71.92	0.45	0.63
Brent-Crude	75.57	0.49	0.65

CURRENCY FUTURES & INDEX TRENDS TRACKER



CURRENCY FUTURES

Expiry	Close	Change Points	% Change
27 NOV-24 USD-INR	84.16	-0.01	-0.01
27 NOV-24 EUR-INR	91.78	-0.02	-0.03
27 NOV-24 GBP-INR	109.28	0.21	0.19
27 NOV-24 JPY- INR	55.32	-0.25	-0.45

INDICES – SUPPORT-RESISTANCE-PIVOT LEVELS

Index	Close	S2	S1	Pivot	R1	R2
NIFTY	24213	23709	23961	24095	24347	24481
SENSEX	79477	77872	78675	79099	79901	80325
NIFTY FUTURES	24295	23859	24077	24199	24417	24538
BANK NIFTY	52207	50363	51285	51787	52709	53212
CNX IT	40425	40003	40214	40436	40647	40869
CNX MIDCAP	56115	54845	55480	55827	56462	56808
CNX SMALLCAP	18503	18150	18327	18425	18602	18701
INDIA VIX	16.12	13.76	14.94	16.98	18.16	20.20

INDEX TREND ANALYSIS

Index	Daily	Weekly	Monthly
NIFTY	SELL	NEUTRAL	NEUTRAL
SENSEX	SELL	NEUTRAL	NEUTRAL
NIFTY FUTURES	SELL	NEUTRAL	NEUTRAL
BANK NIFTY	NEUTRAL	Buy	Buy
CNX IT	SELL	NEUTRAL	Buy
CNX MIDCAP	SELL	NEUTRAL	NEUTRAL
CNX SMALLCAP	NEUTRAL	NEUTRAL	Buy
INDIA VIX	Buy	NEUTRAL	NEUTRAL

SECURITIES BAN IN F&O TRADES FOR 06-11-2024

NIL

TECHNICAL VIEWS



NIFTY

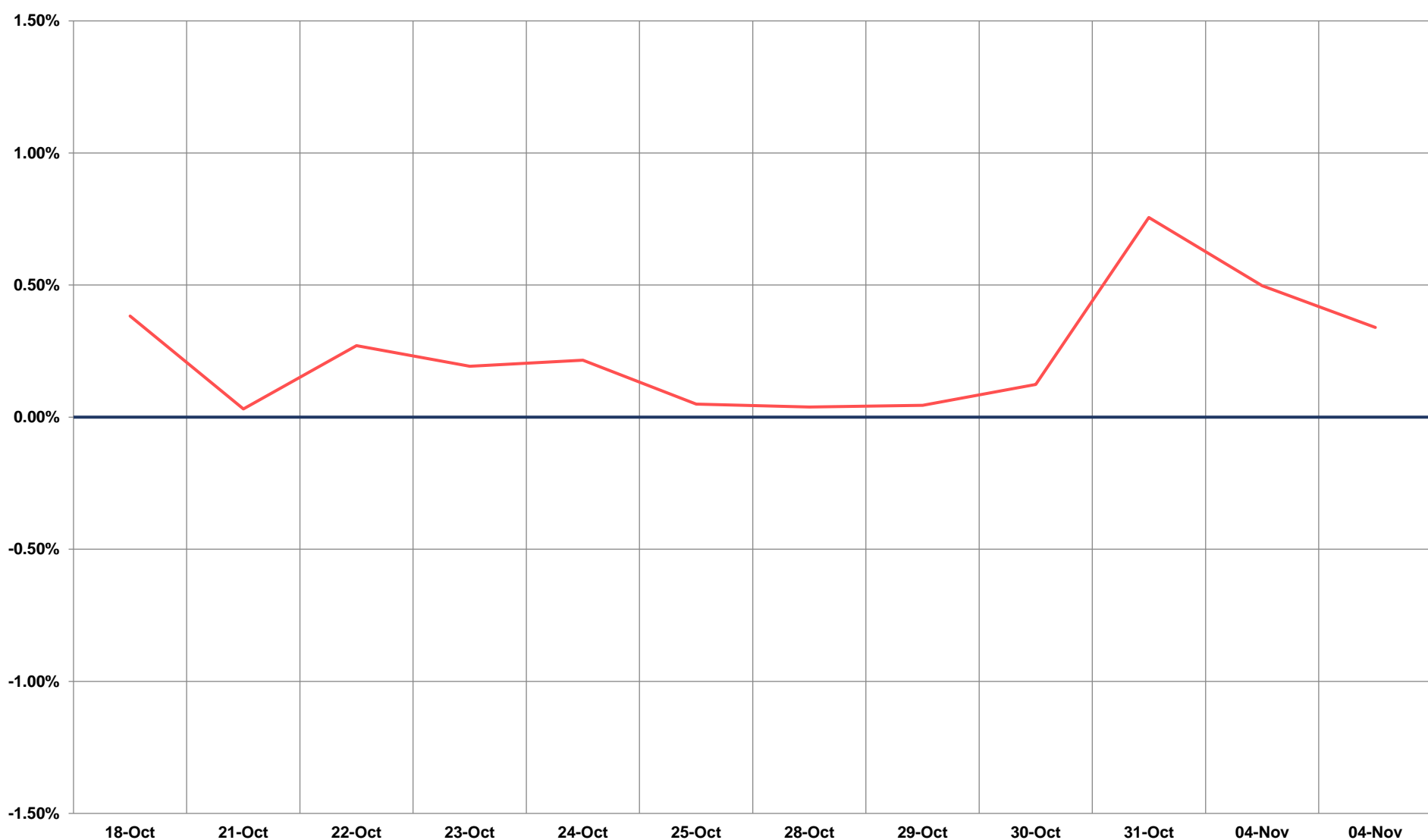
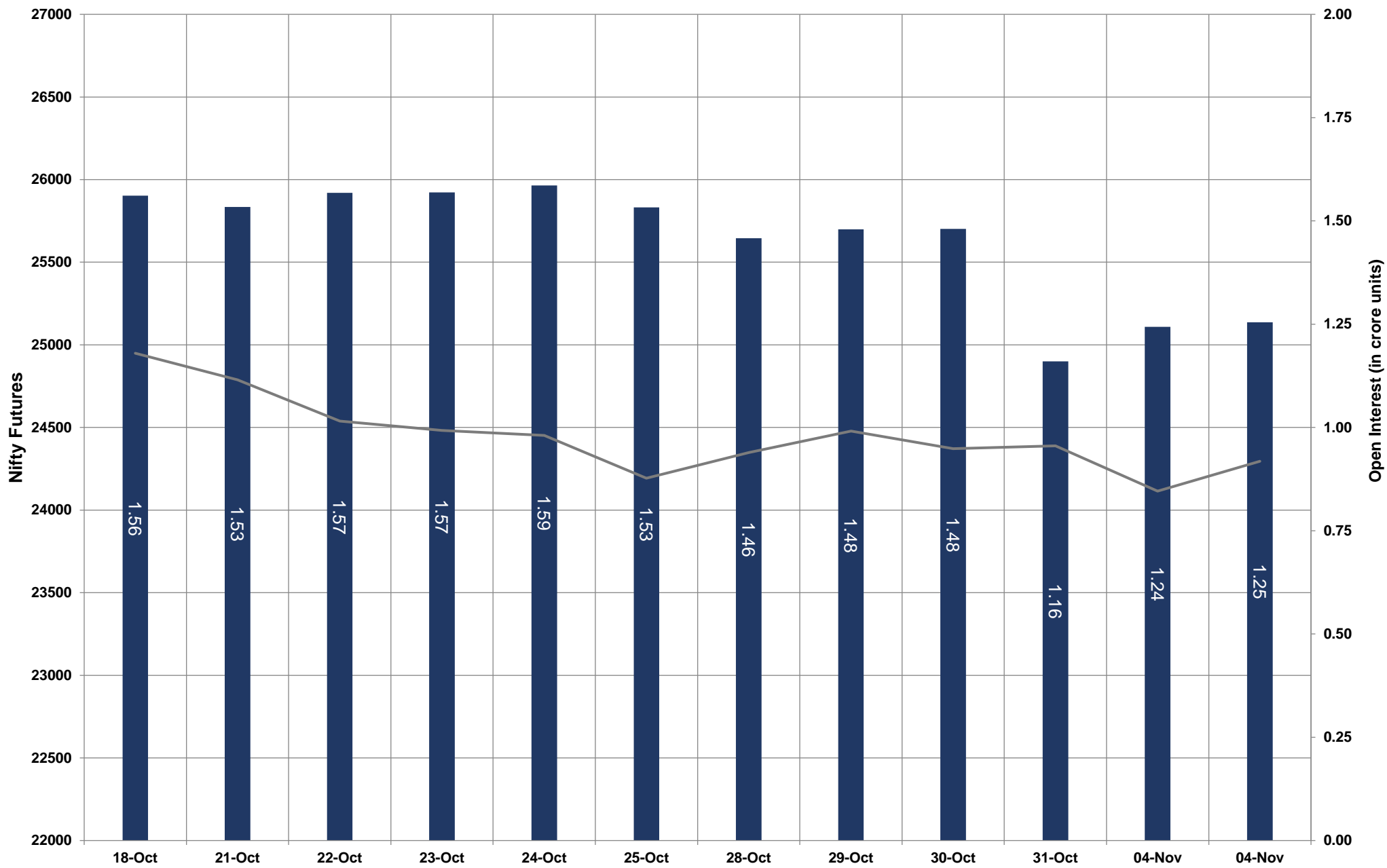


- Nifty Cash = **24213.30 (0.91%)**
- Resistance levels = **24300** and **24480**
- Support levels = **24150** and **23800**

TECHNICAL VIEWS



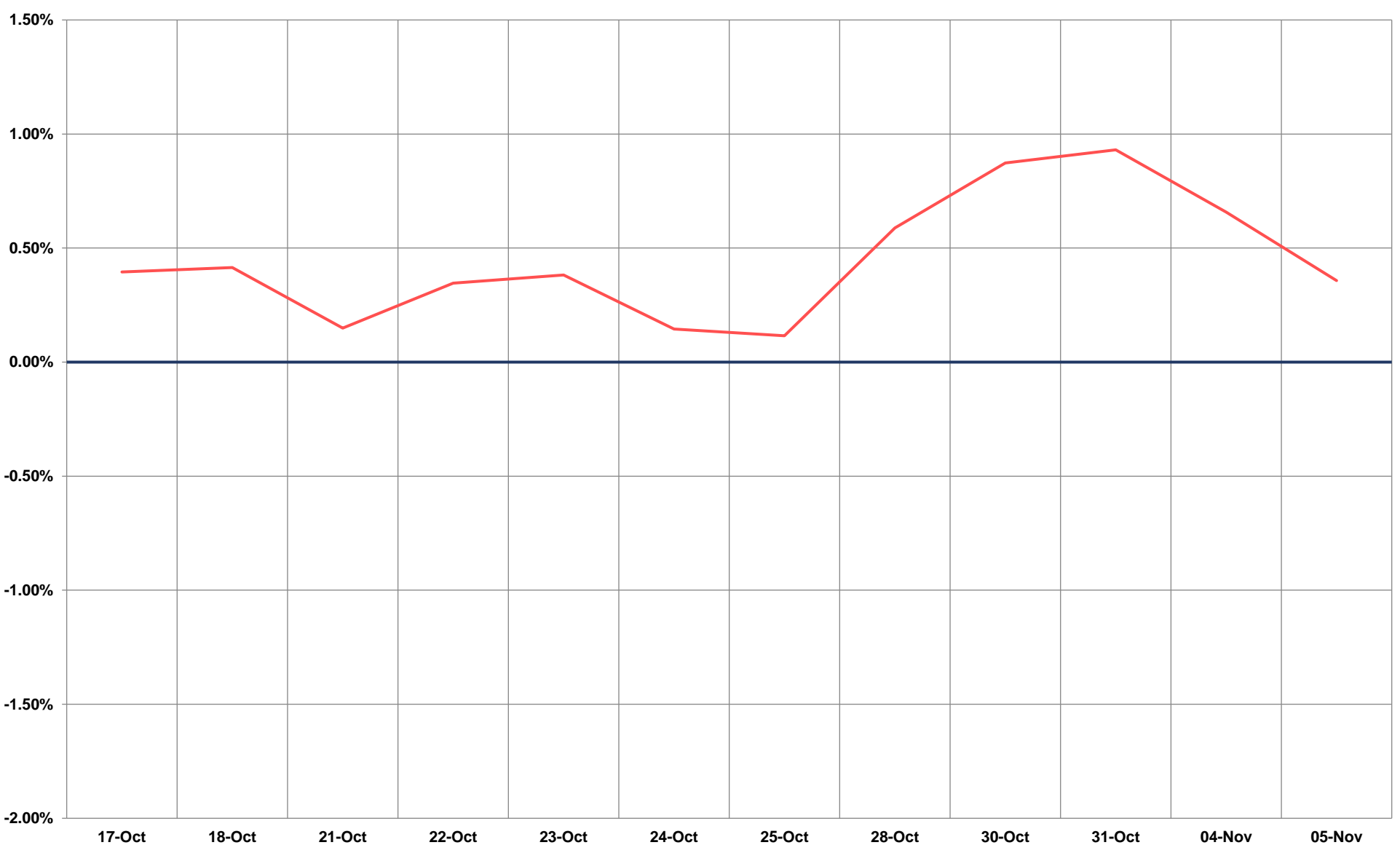
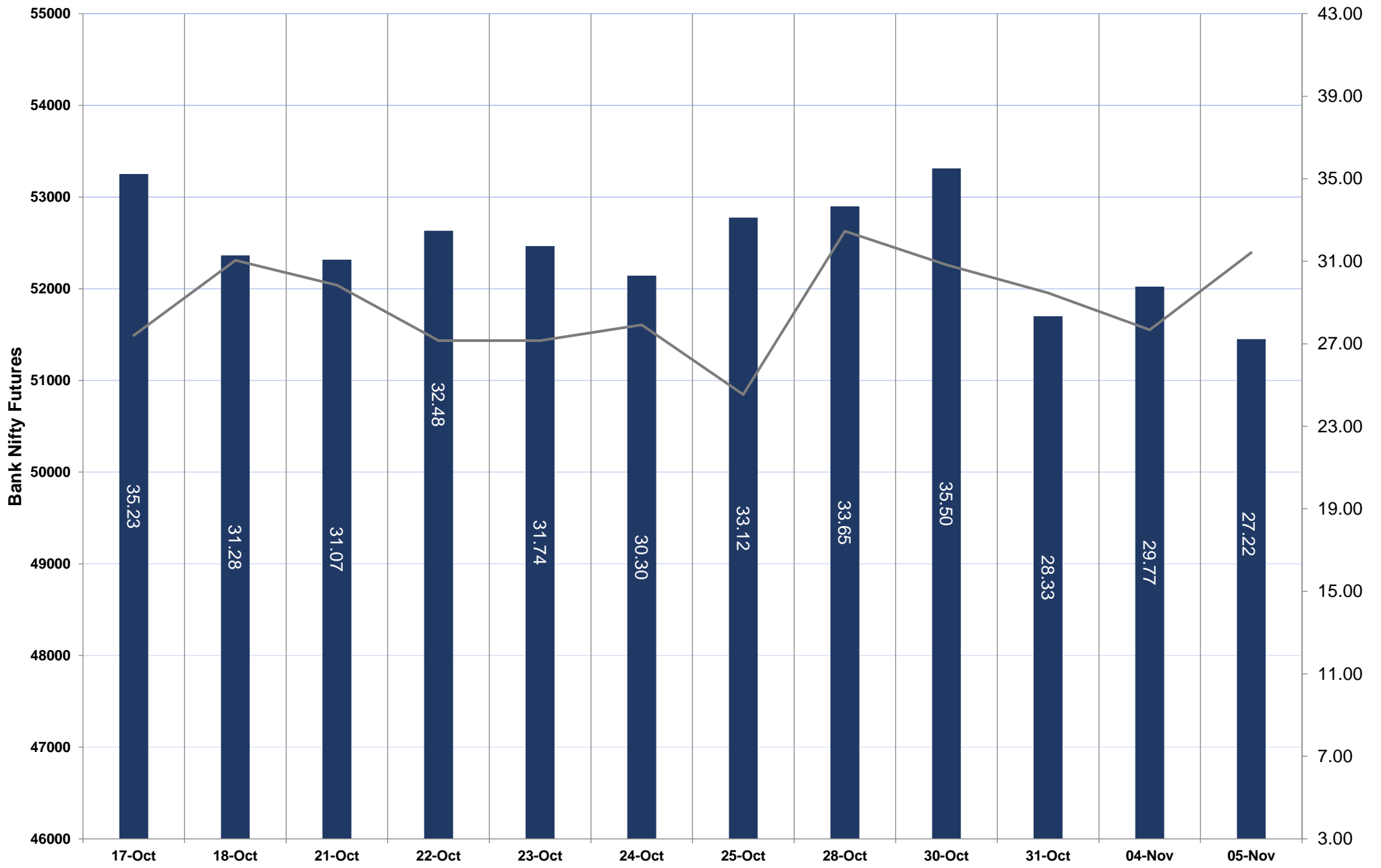
NIFTY FUTURES



TECHNICAL VIEWS



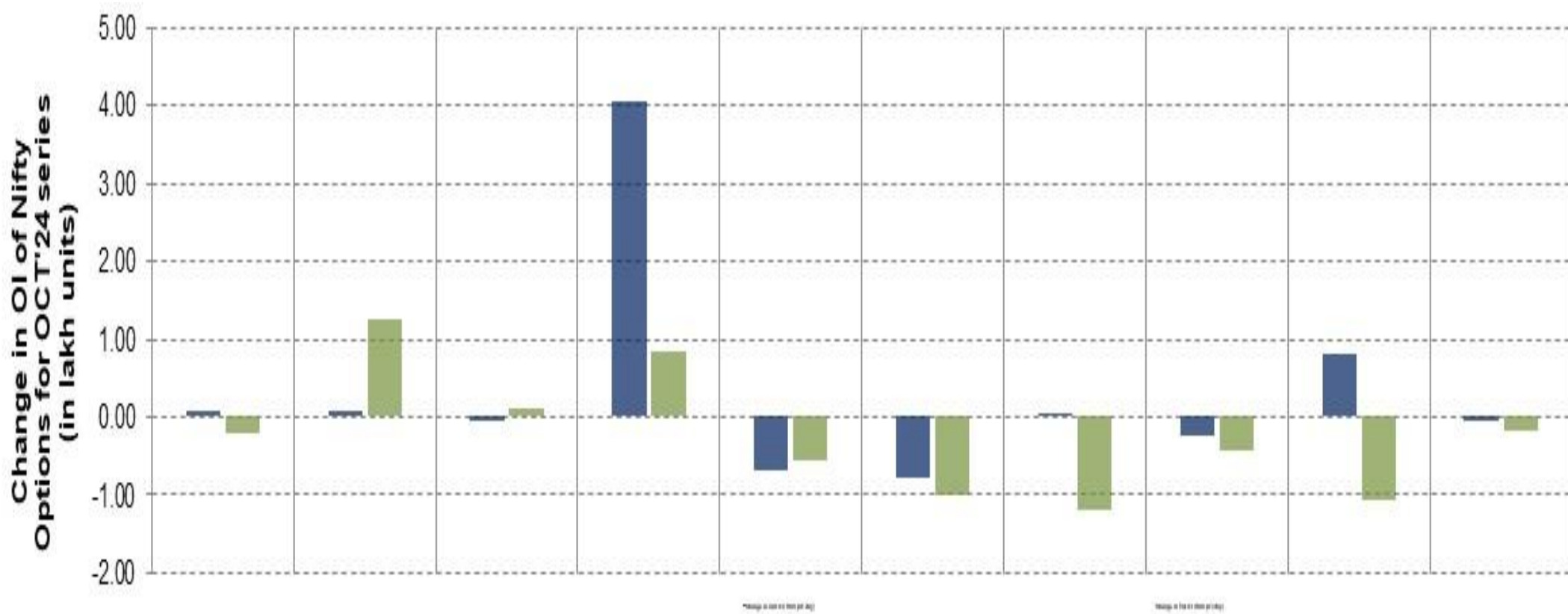
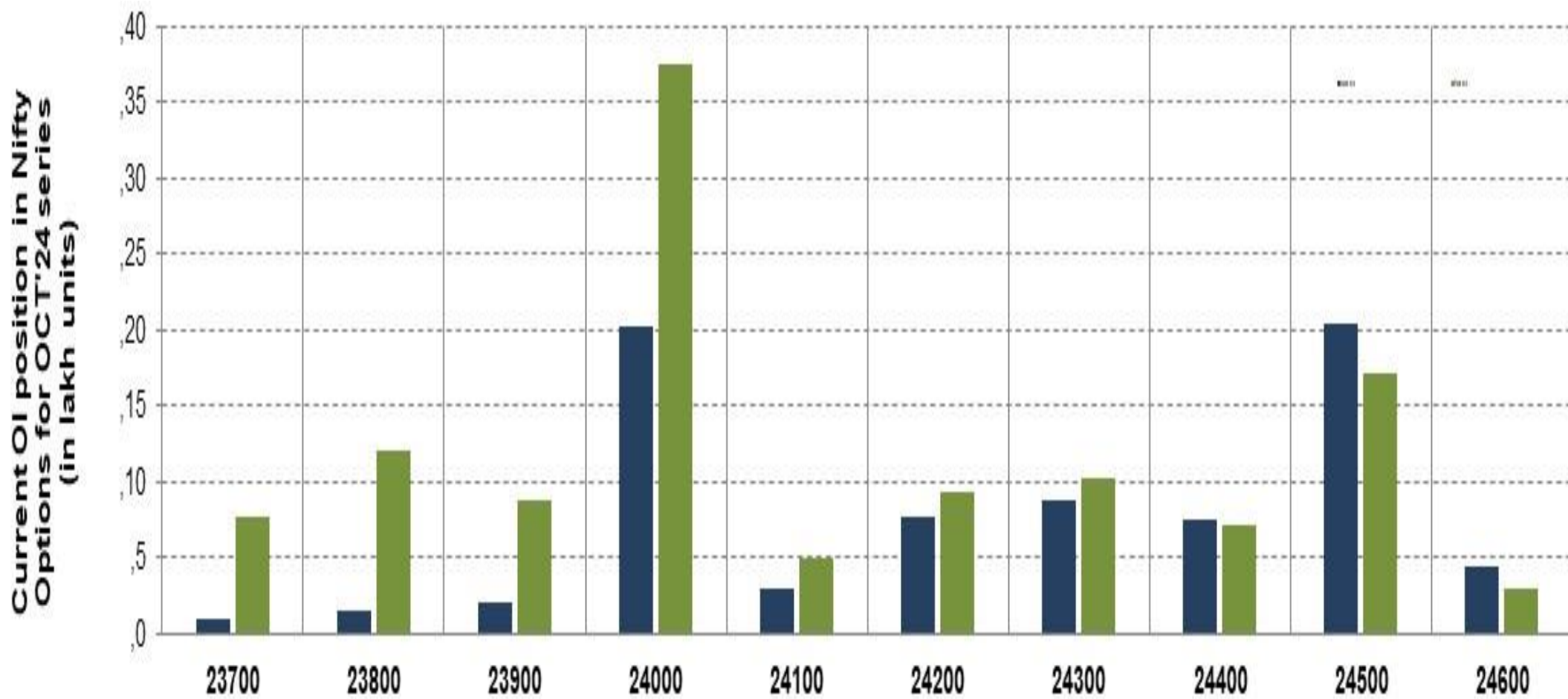
BANK NIFTY FUTURES



TECHNICAL VIEWS



NIFTY OPTIONS



- **Most Active Nifty Call** with an addition of 0.40 million in Open Interests is **Strike Price of 24000**
- **Most Active Nifty Put** with an addition of 0.12 millions in Open Interests is **Strike Price of 23800**
- **Maximum Open Interest an outstanding** was 3.75 millions for Calls at **Strike Price of 24500**
- **Maximum Open Interest an outstanding** was 2.03 millions for puts at **Strike Price of 24000**

Disclaimer



The Information provided by SMS or in newsletter or in any document has been prepared by Shah Investor's Home Ltd (SIHL). The Information provided by SMS or in newsletter does not constitute an offer or solicitation for the purchase or sale of any financial instrument or as an official confirmation of any transaction. The information contained herein is from publicly available data or other sources believed to be reliable, but we do not represent that it is accurate or complete and it should not be relied on as such. SIHL or any of its affiliates/ group companies shall not be in any way responsible for any loss or damage that may arise to any person from any error in the information contained in this report or SMS. This Information provided by SMS, reports or in newsletter is provided for assistance only and is not intended to be and must not alone be taken as the basis for an investment decision. The user assumes the entire risk of any use made of this information. Each recipient of this Information provided by SMS, report or in newsletter should make such investigation as it deems necessary to arrive at an independent evaluation of an investment in the securities of companies referred to in this information provided by SMS, report or in newsletter (including the merits and risks involved), and should consult his own advisors to determine the merits and risks of such investment. The investment discussed or views expressed may not be suitable for all investors. This information is strictly confidential and is being furnished to you solely for your information.

The information should not be reproduced or redistributed or passed on directly or indirectly in any form to any other person or published, copied, in whole or in part, for any purpose. The information provided by report or SMS is not directed or intended for distribution to, or use by, any person or entity who is a citizen or resident of or located in any locality, state, country or other jurisdiction, where such distribution, publication, availability or use would be contrary to law, regulation or which would subject SIHL and affiliates/ group companies to any registration or licensing requirements within such jurisdiction. The distribution of this Information provided by SMS or in newsletter in certain jurisdictions may be restricted by law, and persons in whose possession this Information provided by SMS or in newsletter comes, should inform themselves about and observe, any such restrictions. The information given or Information provided by SMS, report or in newsletter is as of the date of the issue date of report or the date on which SMS provided and there can be no assurance that future results or events will be consistent with this information. This information is subject to change without any prior notice. SIHL reserves the right to make modifications and alterations to this statement as may be required from time to time. However, SIHL is under no obligation to update or keep the information current.

Nevertheless, SIHL is committed to providing independent and transparent recommendation to its client and would be happy to provide any information in response to specific client queries. Neither SIHL nor any of its affiliates, group companies, directors, employees, agents or representatives shall be liable for any damages whether direct, indirect, special or consequential including lost revenue or lost profits that may arise from or in connection with the use of the information. Past performance is not necessarily a guide to future performance. The disclosures of interest statements incorporated in the Information provided by SMS, report or in newsletter are provided solely to enhance the transparency and should not be treated as endorsement of the views expressed in the report. The analyst for this report certifies that all of the views expressed in this report accurately reflect his or her personal views about the subject company or companies and its or their securities, and no part of his or her compensation was, is or will be, directly or indirectly related to specific recommendations or views expressed in this report.